

# LAKE BANK RESTORATION EXHIBIT FOR

# WILDBLUE

FORT MYERS, LEE COUNTY, FLORIDA

## PROJECT DATA

### SITE ADDRESS

13500 ALICO ROAD  
FT. MYERS, FLORIDA 33913

### PROJECT DATUM

STATE PLANE FLORIDA WEST ZONE NAD 1983 (NSRS2007)  
NORTH AMERICAN VERTICAL DATUM (NAVD) 1988

NOTE: CONTRACTOR MUST OBTAIN AND KEEP ON FILE A COPY OF ALL PERMITS  
REQUIRED PRIOR TO COMMENCEMENT OF ANY CONSTRUCTION ACTIVITY

## DESIGN TEAM

### PROJECT ENGINEER

CARL BARRACO, P.E.

### PROJECT MANAGEMENT

DOUG TARN

### DESIGN ENGINEER

### PROJECT SURVEYOR

### LEAD DESIGN TECHNICIAN

CHRISTOPHER PAULY

### SITE PLANNING

### DESIGN STAFF

### LAND PLANNING

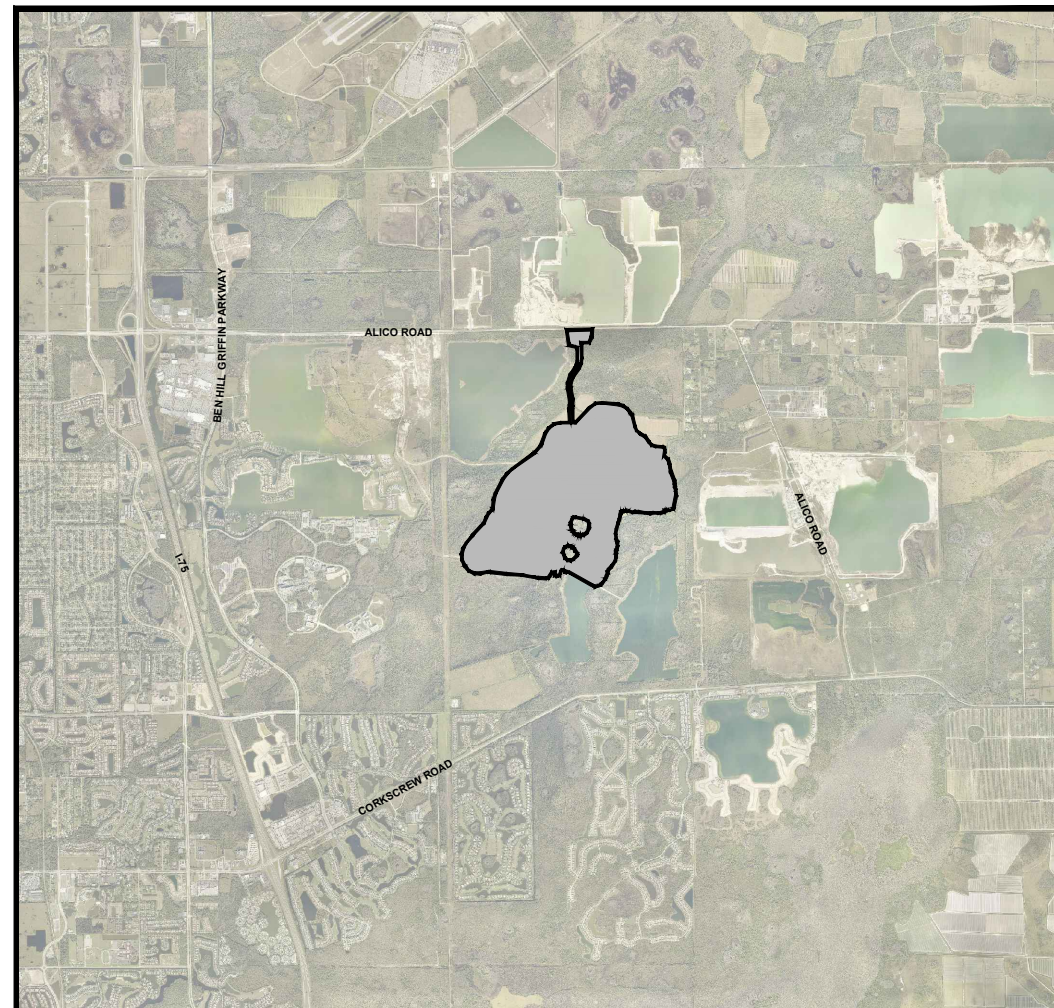
### QUALITY CONTROL

DOUG TARN

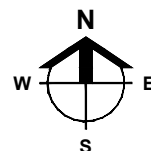
### RECORD DRAWINGS

THESE PLANS MAY HAVE BEEN MODIFIED IN SIZE BY REPRODUCTION.  
THIS MUST BE CONSIDERED WHEN OBTAINING SCALED DATA.

ALL DIMENSIONS ARE IN FEET.



PROJECT  
LOCATION



LOCATION MAP

0 2000 4000 8000  
SCALE IN FEET



## INDEX OF DRAWINGS

ENGINEER OF RECORDS SIGNATURE AND SEAL APPLY TO THE FOLLOWING PLAN SHEETS, EXCLUDING ANY SUPPLEMENTS:

SHEET	DESCRIPTION	XREF	DRAWING NAME
1.0	COVER SHEET AND LOCATION MAP	-	23620LBR01.DWG
2.0	MASTER LAKE BANK RESTORATION PLAN AND KEY SHEET	-	23620LBR12.DWG
3.0-3.13	DETAILED LAKE BANK RESTORATION PLAN	-	23620LBR15.DWG
4.0	TYPICAL LAKE SECTIONS	-	23620LBR18.DWG



**Barraco**  
and Associates, Inc.

CIVIL ENGINEERING - LAND SURVEYING  
LAND PLANNING

www.barraco.net

2271 MCGREGOR BLVD., SUITE 100  
POST OFFICE DRAWER 2800  
FORT MYERS, FLORIDA 33902-2800  
PHONE (239) 461-3170  
FAX (239) 461-3169

FLORIDA CERTIFICATES OF AUTHORIZATION  
ENGINEERING 7995 - SURVEYING LB-6940

PREPARED FOR

WILDBLUE  
COMMUNITY  
DEVELOPMENT  
DISTRICT

PROJECT DESCRIPTION

WILDBLUE  
CDD

LEE COUNTY, FLORIDA

THIS PLAN IS PRELIMINARY AND  
INTENDED FOR CONCEPTUAL  
PLANNING PURPOSES ONLY.

SITE LAYOUT AND LAND USE  
INTENSITIES OR DENSITIES MAY  
CHANGE SIGNIFICANTLY BASED  
UPON SURVEY, ENGINEERING,  
ENVIRONMENTAL AND / OR  
REGULATORY CONSTRAINTS  
AND / OR OPPORTUNITIES.

DRAWING NOT VALID WITHOUT SEAL, SIGNATURE AND DATE  
© COPYRIGHT 2023, BARRACO AND ASSOCIATES, INC.  
REPRODUCTION, CHANGES OR ASSIGNMENTS ARE PROHIBITED

FILE NAME: 23620LBR01.DWG  
LOCATION: J:\23620\DWG\LBR  
PLOT DATE: THU, 3-23-2023 - 3:01 PM  
PLOT BY: CHRIS PAULY

CROSS REFERENCED DRAWINGS

MASTER = BAL-COVER-1.DWG

PLAN REVISIONS

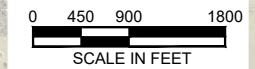
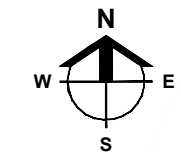
PLAN STATUS

BID EXHIBIT  
03/23/2023

COVER SHEET  
AND  
LOCATION MAP

PROJECT / FILE NO. SHEET NUMBER

23620 1.0



LEGEND:

LINEAR EROSION

- ± 6"-9" DEPTH
- ± 9"+ DEPTH

LOCALIZED EROSION

- ± 9"-18" DEPTH
- ± 19"-29" DEPTH
- ± 30"+ DEPTH

PREPARED FOR

**WILDBLUE  
COMMUNITY  
DEVELOPMENT  
DISTRICT**

PROJECT DESCRIPTION

**WILDBLUE  
CDD**

LEE COUNTY, FLORIDA

THIS PLAN IS PRELIMINARY AND  
INTENDED FOR CONCEPTUAL  
PLANNING PURPOSES ONLY.

SITE LAYOUT AND LAND USE  
INTENSITIES OR DENSITIES MAY  
CHANGE SIGNIFICANTLY BASED  
UPON SURVEY, ENGINEERING,  
ENVIRONMENTAL AND / OR  
REGULATORY CONSTRAINTS  
AND / OR OPPORTUNITIES.

DRAWING NOT VALID WITHOUT SEAL, SIGNATURE AND DATE  
© COPYRIGHT 2023, BARRACO AND ASSOCIATES, INC.  
REPRODUCTION, CHANGES OR ASSIGNMENTS ARE PROHIBITED

FILE NAME	23620LBR12.DWG
LOCATION	J:\23620\DWG\LBR
PLOT DATE	THU, 3-23-2023 - 3:01 PM
PLOT BY	CHRIS PAULY

CROSS REFERENCED DRAWINGS

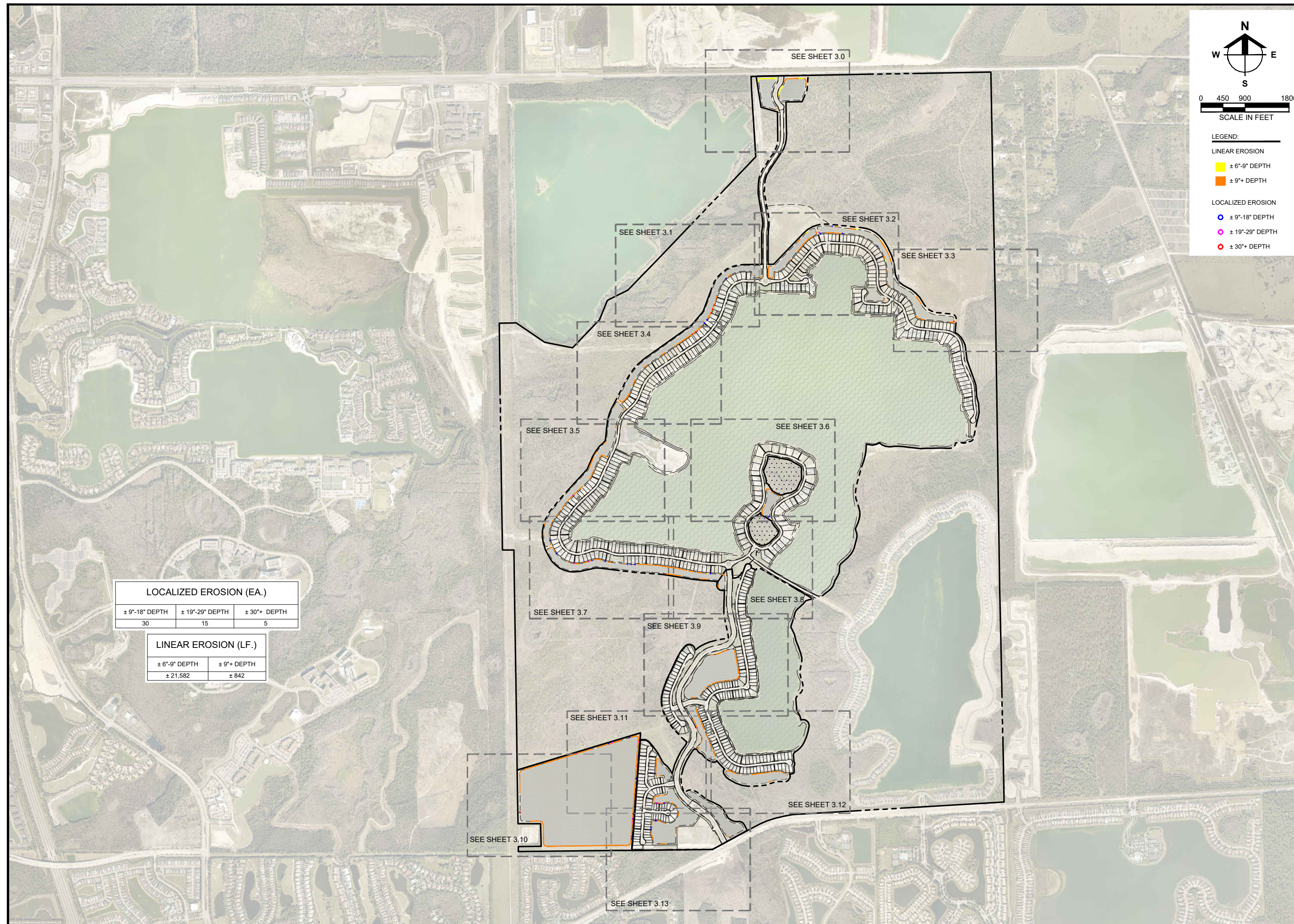
PLAN REVISIONS

PLAN STATUS

BID EXHIBIT  
03/23/2023

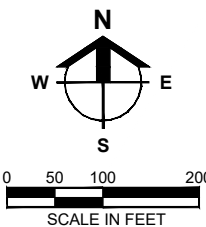
**MASTER LAKE BANK  
RESTORATION PLAN  
AND KEY SHEET**

PROJECT / FILE NO.	23620	SHEET NUMBER	2.0
--------------------	-------	--------------	-----



LOCALIZED EROSION (EA.)		
± 9"-18" DEPTH	± 19"-29" DEPTH	± 30"+ DEPTH
30	15	5

LINEAR EROSION (LF.)	
± 6"-9" DEPTH	± 9"+ DEPTH
± 21,582	± 842



LEGEND	TOTALS
LINEAR EROSION	
± 6"-9" DEPTH	± 703 L.F.
± 9"+ DEPTH	± 582 L.F.

**Barraco**  
and Associates, Inc.  
CIVIL ENGINEERING - LAND SURVEYING  
LAND PLANNING  
[www.barraco.net](http://www.barraco.net)  
2271 MCGREGOR BLVD., SUITE 100  
POST OFFICE DRAWER 2800  
FORT MYERS, FLORIDA 33902-2800  
PHONE (239) 461-3170  
FAX (239) 461-3169  
FLORIDA CERTIFICATES OF AUTHORIZATION  
ENGINEERING 7995 - SURVEYING LB-6940

PREPARED FOR

**WILDBLUE  
COMMUNITY  
DEVELOPMENT  
DISTRICT**

PROJECT DESCRIPTION

**WILDBLUE  
CDD**

LEE COUNTY, FLORIDA

THIS PLAN IS PRELIMINARY AND  
INTENDED FOR CONCEPTUAL  
PLANNING PURPOSES ONLY.

SITE LAYOUT AND LAND USE  
INTENSITIES OR DENSITIES MAY  
CHANGE SIGNIFICANTLY BASED  
UPON SURVEY, ENGINEERING,  
ENVIRONMENTAL AND / OR  
REGULATORY CONSTRAINTS  
AND / OR OPPORTUNITIES.

DRAWING NOT VALID WITHOUT SEAL, SIGNATURE AND DATE  
© COPYRIGHT 2023, BARRACO AND ASSOCIATES, INC.  
REPRODUCTION, CHANGES OR ASSIGNMENTS ARE PROHIBITED

FILE NAME	23620.LBR15.DWG
LOCATION	J:\23620\DWG\LBR1
PLOT DATE	THU, 3-23-2023 - 3:02 PM
PLOT BY	CHRIS PAULY

CROSS REFERENCED DRAWINGS

PLAN REVISIONS

NO.	DATE	DESCRIPTION

PLAN STATUS

BID EXHIBIT  
03/23/2023

**DETAILED  
LAKE BANK  
RESTORATION PLAN**

PROJECT / FILE NO.	SHEET NUMBER
<b>23620</b>	<b>3.0</b>

PREPARED FOR

**WILDBLUE  
COMMUNITY  
DEVELOPMENT  
DISTRICT**

PROJECT DESCRIPTION

**WILDBLUE  
CDD**

LEE COUNTY, FLORIDA

THIS PLAN IS PRELIMINARY AND  
INTENDED FOR CONCEPTUAL  
PLANNING PURPOSES ONLY.

SITE LAYOUT AND LAND USE  
INTENSITIES OR DENSITIES MAY  
CHANGE SIGNIFICANTLY BASED  
UPON SURVEY, ENGINEERING,  
ENVIRONMENTAL AND / OR  
REGULATORY CONSTRAINTS  
AND / OR OPPORTUNITIES.

DRAWING NOT VALID WITHOUT SEAL, SIGNATURE AND DATE  
© COPYRIGHT 2023, BARRACO AND ASSOCIATES, INC.  
REPRODUCTION, CHANGES OR ASSIGNMENTS ARE PROHIBITED

FILE NAME: 23620LBR15.DWG  
LOCATION: J:\23620\DWG\LBR1  
PLOT DATE: THU, 3-23-2023 - 3:02 PM  
PLOT BY: CHRIS PAULY

CROSS REFERENCED DRAWINGS

PLAN REVISIONS

PLAN STATUS

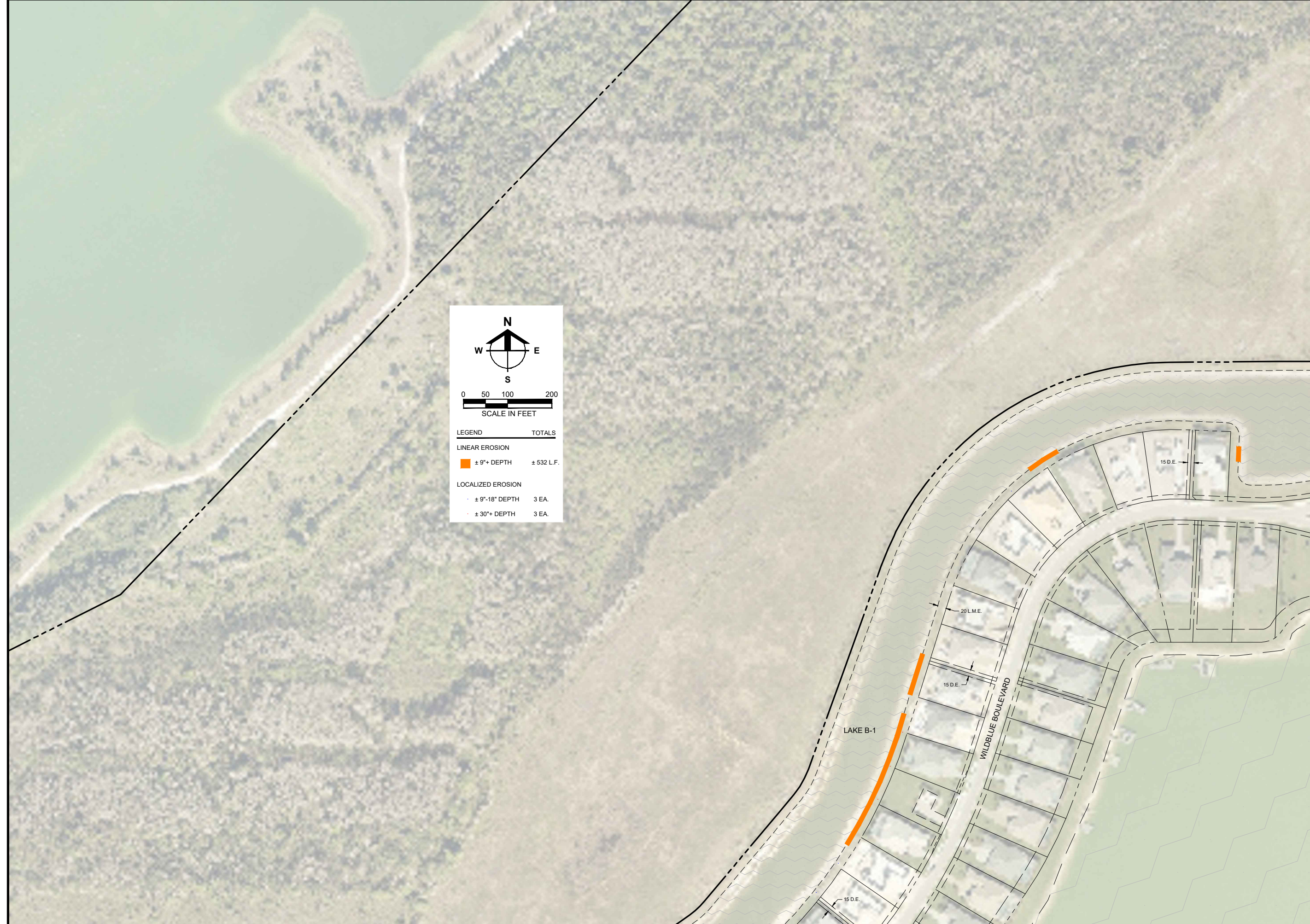
BID EXHIBIT  
03/23/2023

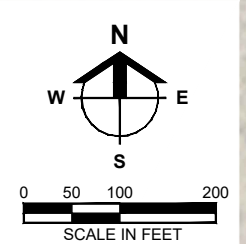
**DETAILED  
LAKE BANK  
RESTORATION PLAN**

PROJECT / FILE NO.	SHEET NUMBER
<b>23620</b>	<b>3.1</b>

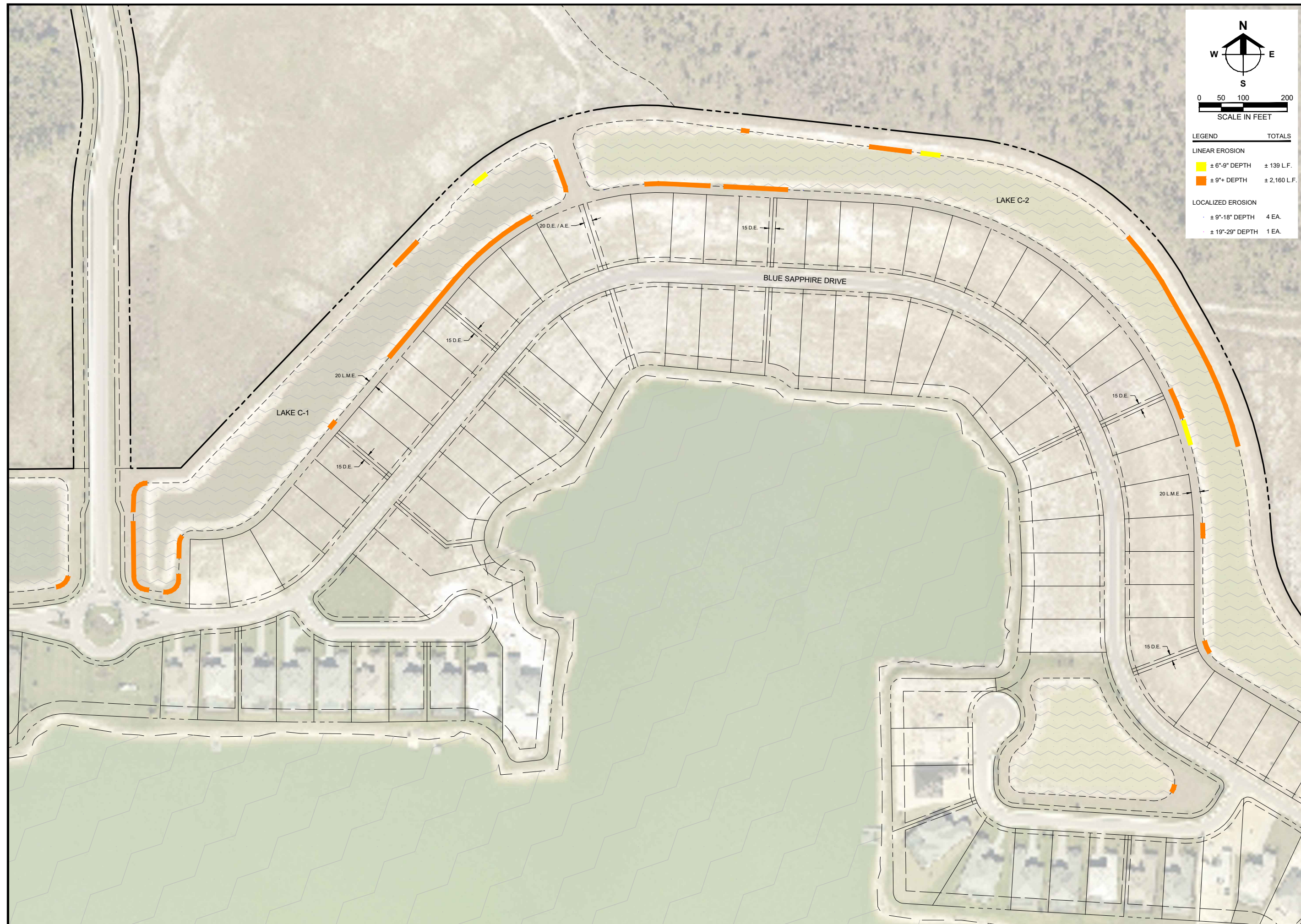
SCALE IN FEET

LEGEND	TOTALS
<b>LINEAR EROSION</b>	
Orange line: ± 9"+ DEPTH	± 532 L.F.
<b>LOCALIZED EROSION</b>	
Blue dashed line: ± 9"-18" DEPTH	3 EA.
Red dashed line: ± 30"+ DEPTH	3 EA.





LEGEND	TOTALS
<b>LINEAR EROSION</b>	
<span style="color: yellow;">█</span> ± 6"-9" DEPTH	± 139 L.F.
<span style="color: orange;">█</span> ± 9"+ DEPTH	± 2,160 L.F.
<b>LOCALIZED EROSION</b>	
<span style="color: grey;">█</span> ± 9"-18" DEPTH	4 EA.
<span style="color: pink;">█</span> ± 19"-29" DEPTH	1 EA.



PREPARED FOR

**WILDBLUE  
COMMUNITY  
DEVELOPMENT  
DISTRICT**

PROJECT DESCRIPTION

**WILDBLUE  
CDD**

LEE COUNTY, FLORIDA

THIS PLAN IS PRELIMINARY AND  
INTENDED FOR CONCEPTUAL  
PLANNING PURPOSES ONLY.

SITE LAYOUT AND LAND USE  
INTENSITIES OR DENSITIES MAY  
CHANGE SIGNIFICANTLY BASED  
UPON SURVEY, ENGINEERING,  
ENVIRONMENTAL AND / OR  
REGULATORY CONSTRAINTS  
AND / OR OPPORTUNITIES.

DRAWING NOT VALID WITHOUT SEAL, SIGNATURE AND DATE  
© COPYRIGHT 2023, BARRACO AND ASSOCIATES, INC.  
REPRODUCTION, CHANGES OR ASSIGNMENTS ARE PROHIBITED

FILE NAME	J:\23620\BR15.DWG
LOCATION	J:\23620\DWGLBR
PLOT DATE	THU, 3-23-2023 - 3:03 PM
PLOT BY	CHRIS PAULY

CROSS REFERENCED DRAWINGS

PLAN REVISIONS

PLAN STATUS

BID EXHIBIT  
03/23/2023

**DETAILED  
LAKE BANK  
RESTORATION PLAN**

PROJECT / FILE NO.	SHEET NUMBER
<b>23620</b>	<b>3.2</b>



# Barraco

and Associates, Inc.  
CIVIL ENGINEERING - LAND SURVEYING  
LAND PLANNING

[www.barraco.net](http://www.barraco.net)

2271 MCGREGOR BLVD., SUITE 100  
POST OFFICE DRAWER 2800  
FORT MYERS, FLORIDA 33902-2800  
PHONE (239) 461-3170  
FAX (239) 461-3169

FLORIDA CERTIFICATES OF AUTHORIZATION  
ENGINEERING 7995 - SURVEYING LB-6940

PREPARED FOR

## WILDBLUE COMMUNITY DEVELOPMENT DISTRICT

PROJECT DESCRIPTION

## WILDBLUE CDD

LEE COUNTY, FLORIDA

THIS PLAN IS PRELIMINARY AND  
INTENDED FOR CONCEPTUAL  
PLANNING PURPOSES ONLY.

SITE LAYOUT AND LAND USE  
INTENSITIES OR DENSITIES MAY  
CHANGE SIGNIFICANTLY BASED  
UPON SURVEY, ENGINEERING,  
ENVIRONMENTAL AND / OR  
REGULATORY CONSTRAINTS  
AND / OR OPPORTUNITIES.

DRAWING NOT VALID WITHOUT SEAL, SIGNATURE AND DATE  
© COPYRIGHT 2023, BARRACO AND ASSOCIATES, INC.  
REPRODUCTION, CHANGES OR ASSIGNMENTS ARE PROHIBITED

FILE NAME	J:\23620\BR15.DWG
LOCATION	J:\23620\DWG\BR1
PLOT DATE	THU, 3-23-2023 - 3:03 PM
PLOT BY	CHRIS PAULY

CROSS REFERENCED DRAWINGS

PLAN REVISIONS

NO.	DATE	DESCRIPTION

PLAN STATUS

BID EXHIBIT  
03/23/2023

## DETAILED LAKE BANK RESTORATION PLAN

PROJECT / FILE NO.	SHEET NUMBER
<b>23620</b>	<b>3.3</b>

PREPARED FOR

**WILDBLUE  
COMMUNITY  
DEVELOPMENT  
DISTRICT**

PROJECT DESCRIPTION

**WILDBLUE  
CDD**

LEE COUNTY, FLORIDA

THIS PLAN IS PRELIMINARY AND  
INTENDED FOR CONCEPTUAL  
PLANNING PURPOSES ONLY.

SITE LAYOUT AND LAND USE  
INTENSITIES OR DENSITIES MAY  
CHANGE SIGNIFICANTLY BASED  
UPON SURVEY, ENGINEERING,  
ENVIRONMENTAL AND / OR  
REGULATORY CONSTRAINTS  
AND / OR OPPORTUNITIES.

DRAWING NOT VALID WITHOUT SEAL, SIGNATURE AND DATE  
© COPYRIGHT 2023, BARRACO AND ASSOCIATES, INC.  
REPRODUCTION, CHANGES OR ASSIGNMENTS ARE PROHIBITED

FILE NAME	J:\23620\BR15.DWG
LOCATION	J:\23620\DWG\BR1
PLOT DATE	THU, 3-23-2023 - 3:04 PM
PLOT BY	CHRIS PAULY

CROSS REFERENCED DRAWINGS

PLAN REVISIONS

NO.	DATE	DESCRIPTION

PLAN STATUS

BID EXHIBIT  
03/23/2023

**DETAILED  
LAKE BANK  
RESTORATION PLAN**

PROJECT / FILE NO.	SHEET NUMBER
<b>23620</b>	<b>3.4</b>

LEGEND	TOTALS
<b>LINEAR EROSION</b>	
± 9"+ DEPTH	± 1,378 L.F.
<b>LOCALIZED EROSION</b>	
± 19"-29" DEPTH	1 EA.
± 30"+ DEPTH	1 EA.



PREPARED FOR

**WILDBLUE  
COMMUNITY  
DEVELOPMENT  
DISTRICT**

PROJECT DESCRIPTION

**WILDBLUE  
CDD**

LEE COUNTY, FLORIDA

THIS PLAN IS PRELIMINARY AND  
INTENDED FOR CONCEPTUAL  
PLANNING PURPOSES ONLY.

SITE LAYOUT AND LAND USE  
INTENSITIES OR DENSITIES MAY  
CHANGE SIGNIFICANTLY BASED  
UPON SURVEY, ENGINEERING,  
ENVIRONMENTAL AND / OR  
REGULATORY CONSTRAINTS  
AND / OR OPPORTUNITIES.

DRAWING NOT VALID WITHOUT SEAL, SIGNATURE AND DATE  
© COPYRIGHT 2023, BARRACO AND ASSOCIATES, INC.  
REPRODUCTION, CHANGES OR ASSIGNMENTS ARE PROHIBITED

FILE NAME	23620LBR15.DWG
LOCATION	J:\23620\DWG\LBR1
PLOT DATE	THU, 3-23-2023 - 3:04 PM
PLOT BY	CHRIS PAULY

CROSS REFERENCED DRAWINGS

PLAN REVISIONS

NO.	DATE	DESCRIPTION

PLAN STATUS

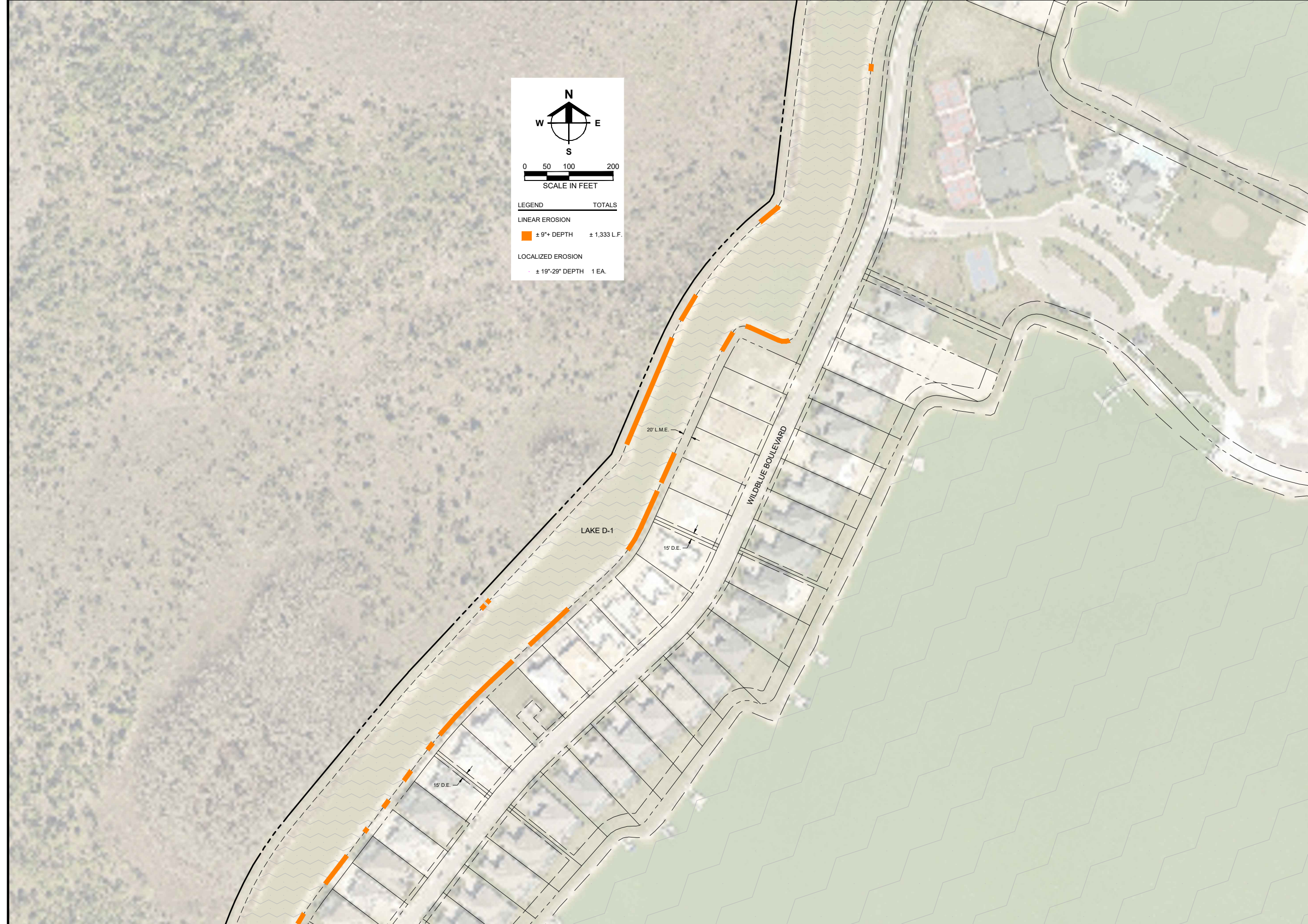
BID EXHIBIT  
03/23/2023

**DETAILED  
LAKE BANK  
RESTORATION PLAN**

PROJECT / FILE NO.	SHEET NUMBER
<b>23620</b>	<b>3.5</b>

0 50 100 200  
SCALE IN FEET

LEGEND	TOTALS
LINEAR EROSION	
± 9"± DEPTH	± 1,333 L.F.
LOCALIZED EROSION	
± 19"-29" DEPTH	1 EA.





**WILDBLUE  
COMMUNITY  
DEVELOPMENT  
DISTRICT**

PROJECT DESCRIPTION

**WILDBLUE  
CDD**

LEE COUNTY, FLORIDA

THIS PLAN IS PRELIMINARY AND  
INTENDED FOR CONCEPTUAL  
PLANNING PURPOSES ONLY.

SITE LAYOUT AND LAND USE  
INTENSITIES OR DENSITIES MAY  
CHANGE SIGNIFICANTLY BASED  
UPON SURVEY, ENGINEERING,  
ENVIRONMENTAL AND / OR  
REGULATORY CONSTRAINTS  
AND / OR OPPORTUNITIES.

DRAWING NOT VALID WITHOUT SEAL, SIGNATURE AND DATE  
© COPYRIGHT 2023, BARRACO AND ASSOCIATES, INC.  
REPRODUCTION, CHANGES OR ASSIGNMENTS ARE PROHIBITED

FILE NAME	J:\23620\BR15.DWG
LOCATION	J:\23620\DWG\LBRI
PLOT DATE	THU, 3-23-2023 - 3:04 PM
PLOT BY	CHRIS PAULY

CROSS REFERENCED DRAWINGS

PLAN REVISIONS

NO.	DATE	DESCRIPTION

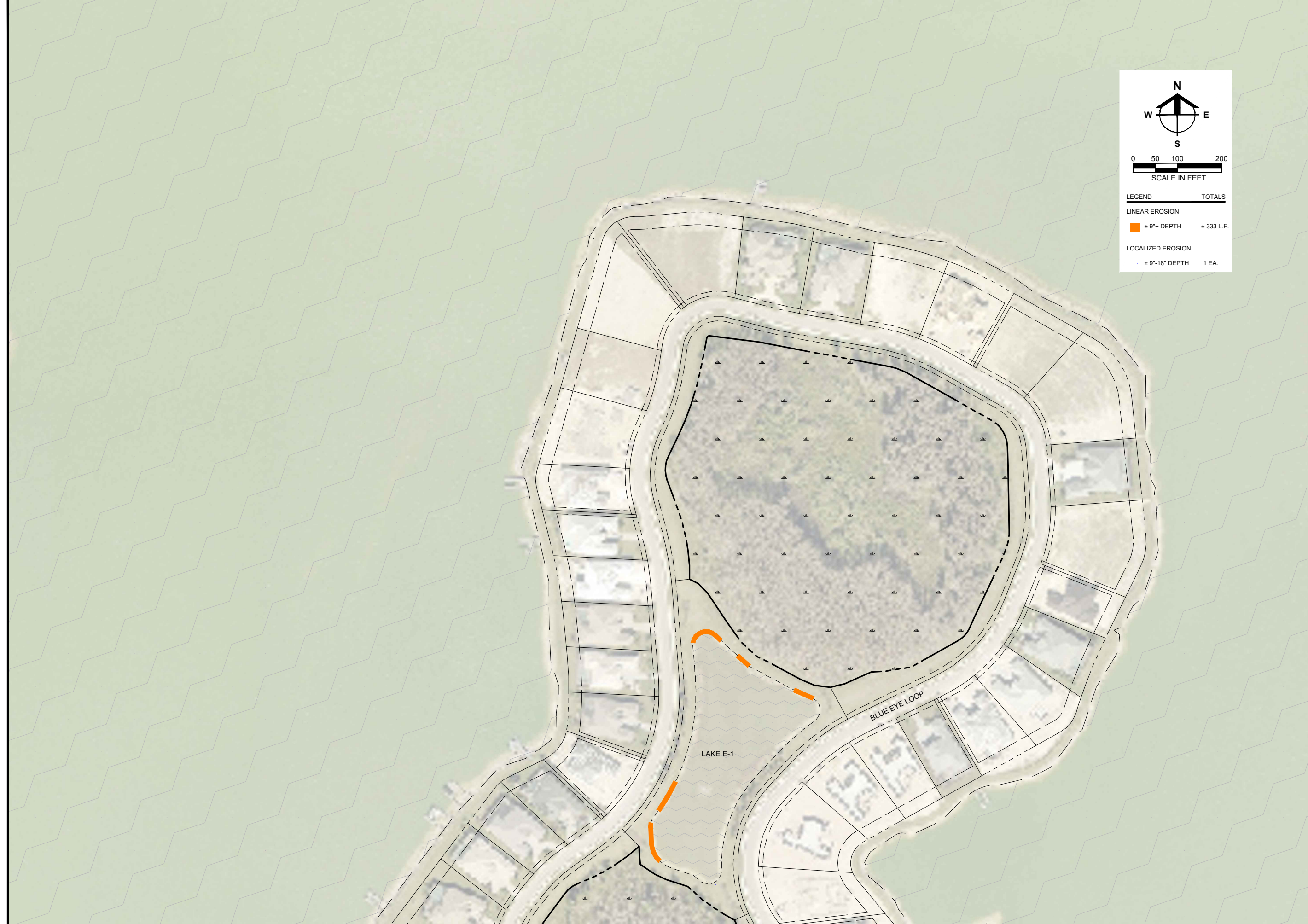
PLAN STATUS

BID EXHIBIT	03/23/2023
-------------	------------

**DETAILED  
LAKE BANK  
RESTORATION PLAN**

PROJECT / FILE NO.	23620	SHEET NUMBER	3.6
--------------------	-------	--------------	-----

LEGEND	TOTALS
LINEAR EROSION	
± 9"+ DEPTH	± 333 L.F.
LOCALIZED EROSION	
± 9"-18" DEPTH	1 EA.



PREPARED FOR

**WILDBLUE  
COMMUNITY  
DEVELOPMENT  
DISTRICT**

PROJECT DESCRIPTION

**WILDBLUE  
CDD**

LEE COUNTY, FLORIDA

THIS PLAN IS PRELIMINARY AND  
INTENDED FOR CONCEPTUAL  
PLANNING PURPOSES ONLY.

SITE LAYOUT AND LAND USE  
INTENSITIES OR DENSITIES MAY  
CHANGE SIGNIFICANTLY BASED  
UPON SURVEY, ENGINEERING,  
ENVIRONMENTAL AND / OR  
REGULATORY CONSTRAINTS  
AND / OR OPPORTUNITIES.

DRAWING NOT VALID WITHOUT SEAL, SIGNATURE AND DATE  
© COPYRIGHT 2023, BARRACO AND ASSOCIATES, INC.  
REPRODUCTION, CHANGES OR ASSIGNMENTS ARE PROHIBITED

FILE NAME: 23620LBR15.DWG  
LOCATION: J:\23620\DWG\LBR  
PLOT DATE: THU, 3-23-2023 - 3:05 PM  
PLOT BY: CHRIS PAULY

CROSS REFERENCED DRAWINGS

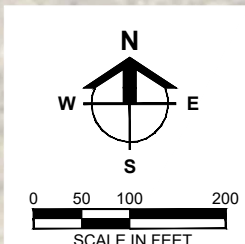
PLAN REVISIONS

PLAN STATUS

BID EXHIBIT  
03/23/2023

**DETAILED  
LAKE BANK  
RESTORATION PLAN**

PROJECT / FILE NO. SHEET NUMBER  
**23620 3.7**



LEGEND	TOTALS
<b>LINEAR EROSION</b>	
± 9"+ DEPTH	± 1,592 L.F.
<b>LOCALIZED EROSION</b>	
± 9"-18" DEPTH	7 EA.
± 19"-29" DEPTH	2 EA.

PREPARED FOR

**WILDBLUE  
COMMUNITY  
DEVELOPMENT  
DISTRICT**

PROJECT DESCRIPTION

**WILDBLUE  
CDD**

LEE COUNTY, FLORIDA

THIS PLAN IS PRELIMINARY AND  
INTENDED FOR CONCEPTUAL  
PLANNING PURPOSES ONLY.

SITE LAYOUT AND LAND USE  
INTENSITIES OR DENSITIES MAY  
CHANGE SIGNIFICANTLY BASED  
UPON SURVEY, ENGINEERING,  
ENVIRONMENTAL AND / OR  
REGULATORY CONSTRAINTS  
AND / OR OPPORTUNITIES.

DRAWING NOT VALID WITHOUT SEAL, SIGNATURE AND DATE  
© COPYRIGHT 2023, BARRACO AND ASSOCIATES, INC.  
REPRODUCTION, CHANGES OR ASSIGNMENTS ARE PROHIBITED

FILE NAME: 23620LBR15.DWG  
LOCATION: J:\23620\DWG\LBR1  
PLOT DATE: THU, 3-23-2023 - 3:05 PM  
PLOT BY: CHRIS PAULY

CROSS REFERENCED DRAWINGS

PLAN REVISIONS

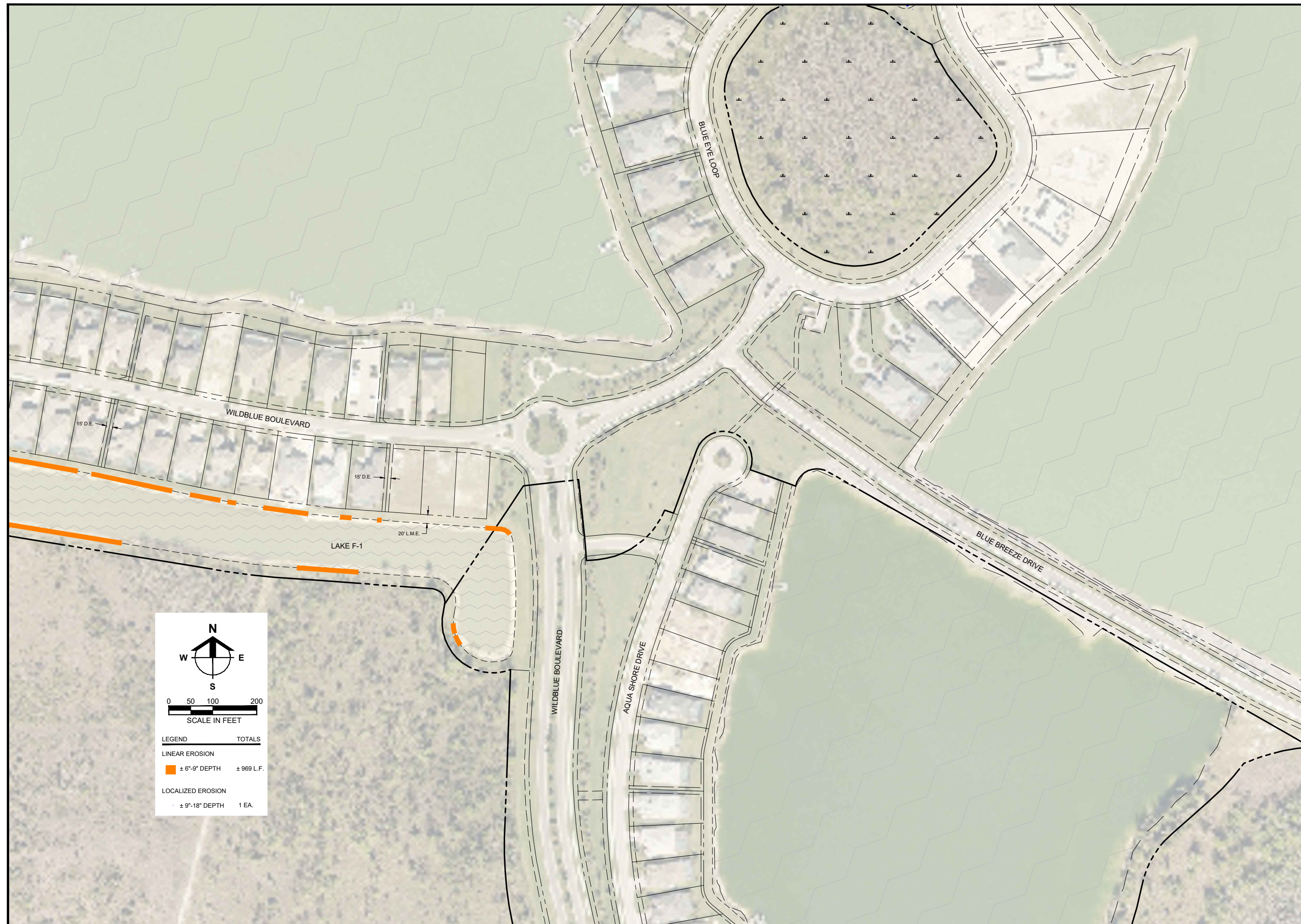
PLAN STATUS

BID EXHIBIT  
03/23/2023

**DETAILED  
LAKE BANK  
RESTORATION PLAN**

PROJECT / FILE NO. SHEET NUMBER

**23620 3.8**



SCALE IN FEET

LEGEND	TOTALS
LINEAR EROSION	
<span style="color: orange;">---</span> ± 6'-9" DEPTH	± 969 L.F.
LOCALIZED EROSION	
<span style="color: black;">---</span> ± 9'-18" DEPTH	1 EA.

**WILDBLUE  
COMMUNITY  
DEVELOPMENT  
DISTRICT**

PROJECT DESCRIPTION

**WILDBLUE  
CDD**

LEE COUNTY, FLORIDA

THIS PLAN IS PRELIMINARY AND  
INTENDED FOR CONCEPTUAL  
PLANNING PURPOSES ONLY.

SITE LAYOUT AND LAND USE  
INTENSITIES OR DENSITIES MAY  
CHANGE SIGNIFICANTLY BASED  
UPON SURVEY, ENGINEERING,  
ENVIRONMENTAL AND / OR  
REGULATORY CONSTRAINTS  
AND / OR OPPORTUNITIES.

DRAWING NOT VALID WITHOUT SEAL, SIGNATURE AND DATE  
© COPYRIGHT 2023, BARRACO AND ASSOCIATES, INC.  
REPRODUCTION, CHANGES OR ASSIGNMENTS ARE PROHIBITED

FILE NAME	J:\23620\BR15.DWG
LOCATION	J:\23620\DWG\BR15
PLOT DATE	THU, 3-23-2023 - 3:06 PM
PLOT BY	CHRIS PAULY

CROSS REFERENCED DRAWINGS

PLAN REVISIONS

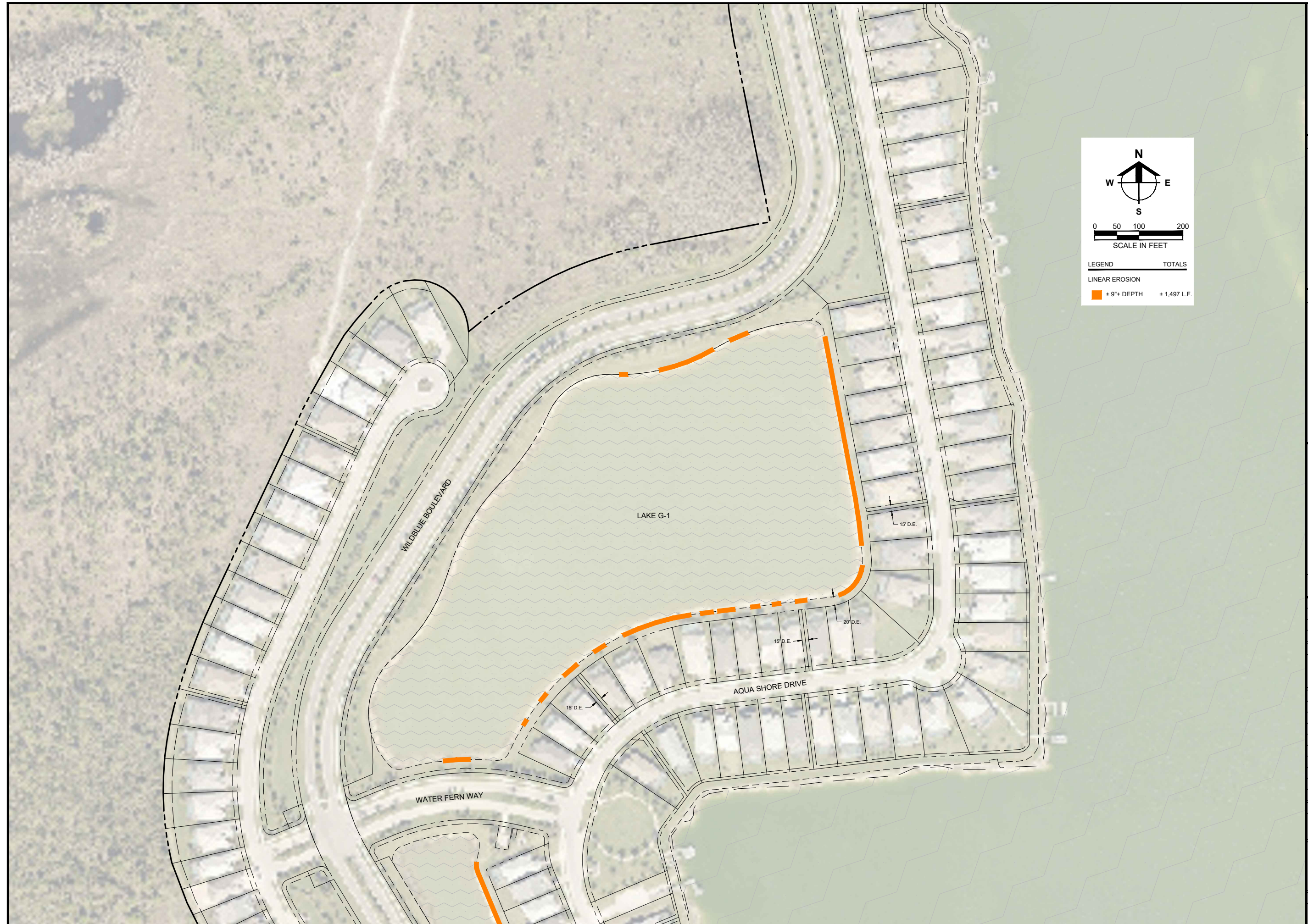
PLAN STATUS

BID EXHIBIT  
03/23/2023

**DETAILED  
LAKE BANK  
RESTORATION PLAN**

PROJECT / FILE NO. SHEET NUMBER

**23620 3.9**



N  
W E  
S  
0 50 100 200  
SCALE IN FEET

LEGEND TOTALS

LINEAR EROSION

± 9'+ DEPTH ± 1,497 L.F.

PREPARED FOR

**WILDBLUE  
COMMUNITY  
DEVELOPMENT  
DISTRICT**

PROJECT DESCRIPTION

**WILDBLUE  
CDD**

LEE COUNTY, FLORIDA

THIS PLAN IS PRELIMINARY AND  
INTENDED FOR CONCEPTUAL  
PLANNING PURPOSES ONLY.

SITE LAYOUT AND LAND USE  
INTENSITIES OR DENSITIES MAY  
CHANGE SIGNIFICANTLY BASED  
UPON SURVEY, ENGINEERING,  
ENVIRONMENTAL AND / OR  
REGULATORY CONSTRAINTS  
AND / OR OPPORTUNITIES.

DRAWING NOT VALID WITHOUT SEAL, SIGNATURE AND DATE  
© COPYRIGHT 2023, BARRACO AND ASSOCIATES, INC.  
REPRODUCTION, CHANGES OR ASSIGNMENTS ARE PROHIBITED

FILE NAME	J:\23620\BR15.DWG
LOCATION	J:\23620\DWG\BR1
PLOT DATE	THU, 3-23-2023 - 3:06 PM
PLOT BY	CHRIS PAULY

CROSS REFERENCED DRAWINGS

PLAN REVISIONS

NO.	DATE	DESCRIPTION

PLAN STATUS

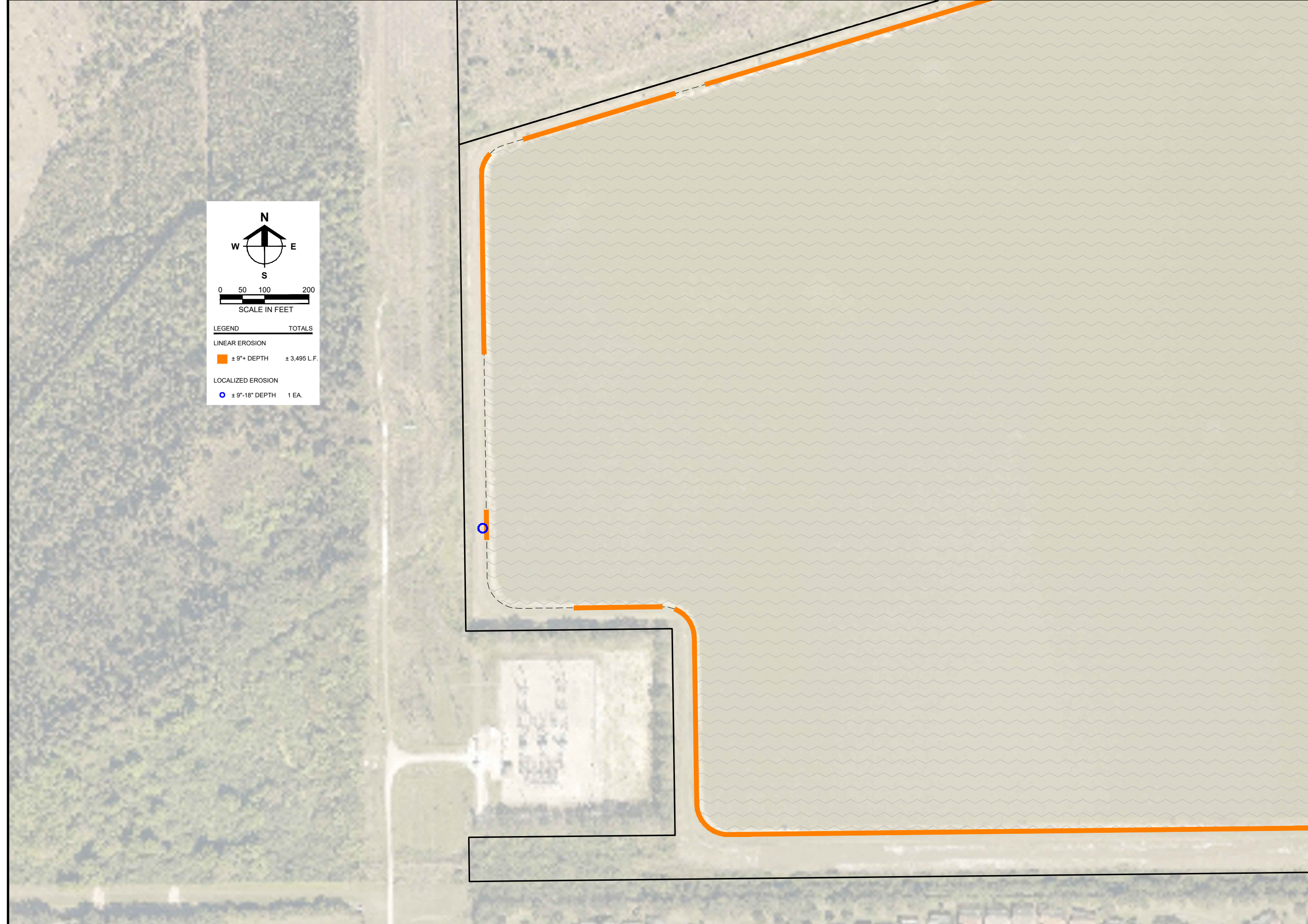
BID EXHIBIT	03/23/2023
-------------	------------

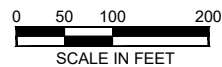
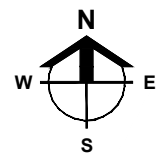
**DETAILED  
LAKE BANK  
RESTORATION PLAN**

PROJECT / FILE NO.	SHEET NUMBER
<b>23620</b>	<b>3.10</b>

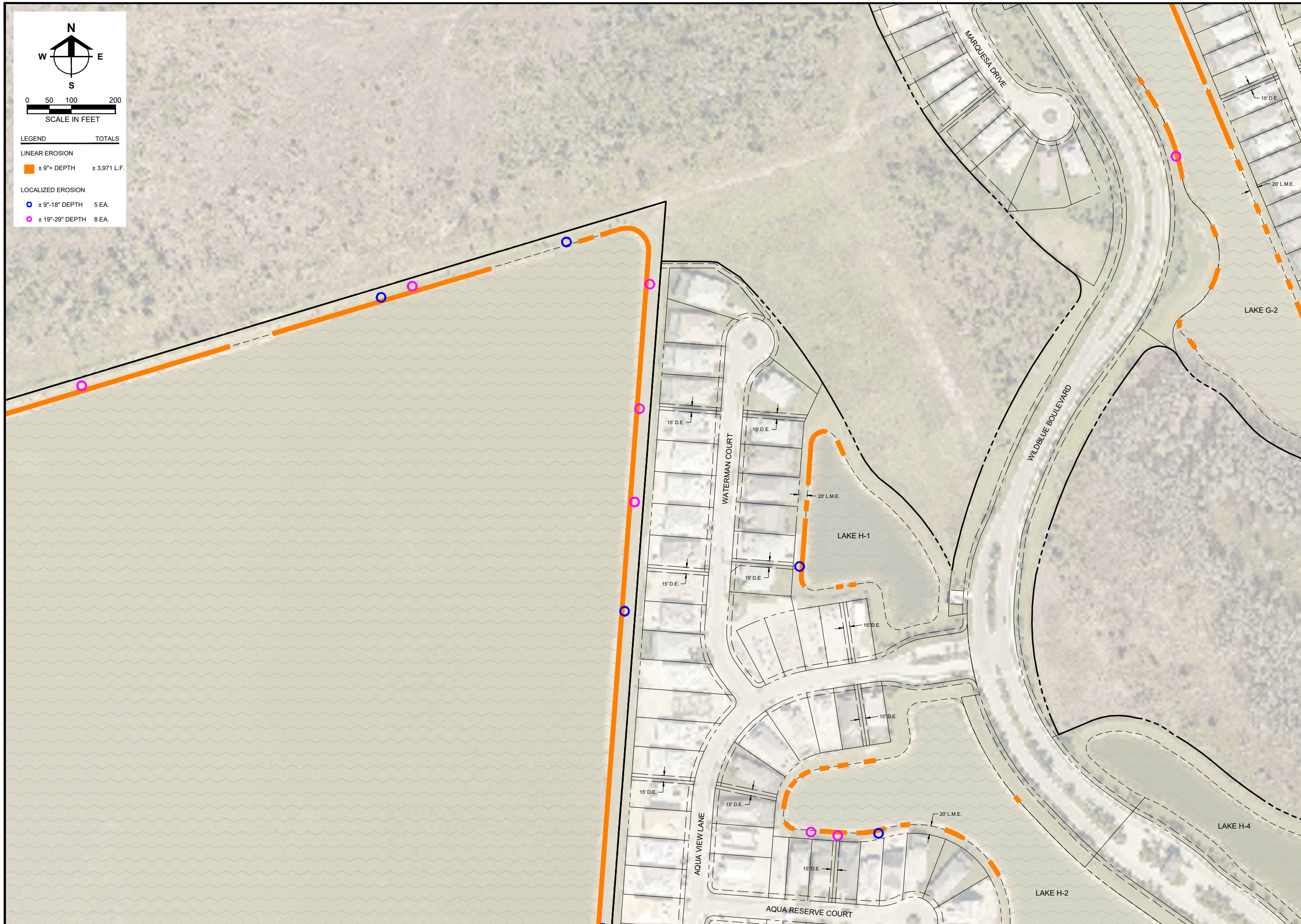
0 50 100 200  
SCALE IN FEET

LEGEND	TOTALS
<b>LINEAR EROSION</b>	
± 9"+ DEPTH	± 3,495 L.F.
<b>LOCALIZED EROSION</b>	
± 9"-18" DEPTH	1 EA.





LEGEND	TOTALS
<b>LINEAR EROSION</b>	
Orange line: ± 9"+ DEPTH	± 3,971 L.F.
<b>LOCALIZED EROSION</b>	
Blue circle: ± 9"-18" DEPTH	5 EA.
Pink circle: ± 19"-29" DEPTH	8 EA.



**Barraco**  
and Associates, Inc.  
CIVIL ENGINEERING - LAND SURVEYING  
LAND PLANNING  
[www.barraco.net](http://www.barraco.net)  
2271 MCGREGOR BLVD., SUITE 100  
POST OFFICE DRAWER 2800  
FORT MYERS, FLORIDA 33902-2800  
PHONE (239) 461-3170  
FAX (239) 461-3169  
FLORIDA CERTIFICATES OF AUTHORIZATION  
ENGINEERING 7995 - SURVEYING LB-6940

PREPARED FOR

### WILDBLUE COMMUNITY DEVELOPMENT DISTRICT

PROJECT DESCRIPTION

### WILDBLUE CDD

LEE COUNTY, FLORIDA

THIS PLAN IS PRELIMINARY AND  
INTENDED FOR CONCEPTUAL  
PLANNING PURPOSES ONLY.

SITE LAYOUT AND LAND USE  
INTENSITIES OR DENSITIES MAY  
CHANGE SIGNIFICANTLY BASED  
UPON SURVEY, ENGINEERING,  
ENVIRONMENTAL AND / OR  
REGULATORY CONSTRAINTS  
AND / OR OPPORTUNITIES.

DRAWING NOT VALID WITHOUT SEAL, SIGNATURE AND DATE  
© COPYRIGHT 2023, BARRACO AND ASSOCIATES, INC.  
REPRODUCTION, CHANGES OR ASSIGNMENTS ARE PROHIBITED

FILE NAME	23620LBR15.DWG
LOCATION	J:\23620\DWG\LBR1
PLOT DATE	THU, 3-23-2023 - 3:06 PM
PLOT BY	CHRIS PAULY

CROSS REFERENCED DRAWINGS

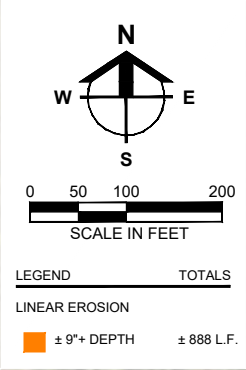
PLAN REVISIONS

PLAN STATUS

BID EXHIBIT  
03/23/2023

### DETAILED LAKE BANK RESTORATION PLAN

PROJECT / FILE NO.	SHEET NUMBER
<b>23620</b>	<b>3.11</b>



**Barraco**  
and Associates, Inc.  
CIVIL ENGINEERING - LAND SURVEYING  
LAND PLANNING  
[www.barraco.net](http://www.barraco.net)  
2271 MCGREGOR BLVD., SUITE 100  
POST OFFICE DRAWER 2800  
FORT MYERS, FLORIDA 33902-2800  
PHONE (239) 461-3170  
FAX (239) 461-3169

FLORIDA CERTIFICATES OF AUTHORIZATION  
ENGINEERING 7995 - SURVEYING LB-6940

PREPARED FOR  
  
**WILDBLUE  
COMMUNITY  
DEVELOPMENT  
DISTRICT**

PROJECT DESCRIPTION  
  
**WILDBLUE  
CDD**  
  
LEE COUNTY, FLORIDA

THIS PLAN IS PRELIMINARY AND  
INTENDED FOR CONCEPTUAL  
PLANNING PURPOSES ONLY.  
  
SITE LAYOUT AND LAND USE  
INTENSITIES OR DENSITIES MAY  
CHANGE SIGNIFICANTLY BASED  
UPON SURVEY, ENGINEERING,  
ENVIRONMENTAL AND / OR  
REGULATORY CONSTRAINTS  
AND / OR OPPORTUNITIES.

DRAWING NOT VALID WITHOUT SEAL, SIGNATURE AND DATE  
© COPYRIGHT 2023, BARRACO AND ASSOCIATES, INC.  
REPRODUCTION, CHANGES OR ASSIGNMENTS ARE PROHIBITED

FILE NAME	J:\23620\DWG\LBRI
LOCATION	J:\23620\DWG\LBRI
PLOT DATE	THU, 3-23-2023 - 3:07 PM
PLOT BY	CHRIS PAULY

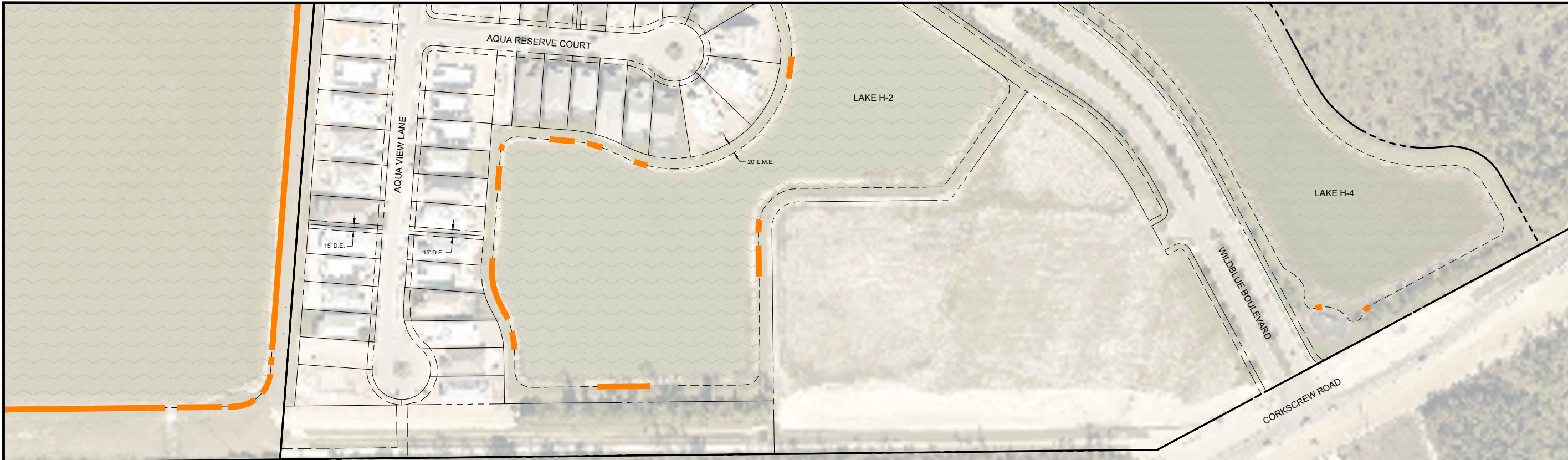
CROSS REFERENCED DRAWINGS

PLAN REVISIONS

PLAN STATUS  
BID EXHIBIT  
03/23/2023

**DETAILED  
LAKE BANK  
RESTORATION PLAN**

PROJECT / FILE NO.	SHEET NUMBER
<b>23620</b>	<b>3.12</b>



SCALE IN FEET

LEGEND	TOTALS
<b>LINEAR EROSION</b>	
± 9"+ DEPTH	± 1,590 L.F.
<b>LOCALIZED EROSION</b>	
· ± 9"-18" DEPTH	8 EA.
· ± 19"-29" DEPTH	2 EA.

**Barraco**  
and Associates, Inc.  
CIVIL ENGINEERING - LAND SURVEYING  
LAND PLANNING

[www.barraco.net](http://www.barraco.net)  
2271 MCGREGOR BLVD., SUITE 100  
POST OFFICE DRAWER 2800  
FORT MYERS, FLORIDA 33902-2800  
PHONE (239) 461-3170  
FAX (239) 461-3169

FLORIDA CERTIFICATES OF AUTHORIZATION  
ENGINEERING 7995 - SURVEYING LB-6940

PREPARED FOR

**WILDBLUE  
COMMUNITY  
DEVELOPMENT  
DISTRICT**

PROJECT DESCRIPTION

**WILDBLUE  
CDD**

LEE COUNTY, FLORIDA

THIS PLAN IS PRELIMINARY AND  
INTENDED FOR CONCEPTUAL  
PLANNING PURPOSES ONLY.

SITE LAYOUT AND LAND USE  
INTENSITIES OR DENSITIES MAY  
CHANGE SIGNIFICANTLY BASED  
UPON SURVEY, ENGINEERING,  
ENVIRONMENTAL AND / OR  
REGULATORY CONSTRAINTS  
AND / OR OPPORTUNITIES.

DRAWING NOT VALID WITHOUT SEAL, SIGNATURE AND DATE  
© COPYRIGHT 2023, BARRACO AND ASSOCIATES, INC.  
REPRODUCTION, CHANGES OR ASSIGNMENTS ARE PROHIBITED

FILE NAME	J:\23620\BR15.DWG
LOCATION	J:\23620\DWG\BR15
PLOT DATE	THU, 3-23-2023 - 3:07 PM
PLOT BY	CHRIS PAULY

CROSS REFERENCED DRAWINGS	

PLAN REVISIONS	

PLAN STATUS

BID EXHIBIT  
03/23/2023

**DETAILED  
LAKE BANK  
RESTORATION PLAN**

PROJECT / FILE NO.	SHEET NUMBER
<b>23620</b>	<b>3.13</b>



**WILDBLUE  
COMMUNITY  
DEVELOPMENT  
DISTRICT**

PROJECT DESCRIPTION

**WILDBLUE  
CDD**

LEE COUNTY, FLORIDA

THIS PLAN IS PRELIMINARY AND  
INTENDED FOR CONCEPTUAL  
PLANNING PURPOSES ONLY.

SITE LAYOUT AND LAND USE  
INTENSITIES OR DENSITIES MAY  
CHANGE SIGNIFICANTLY BASED  
UPON SURVEY, ENGINEERING,  
ENVIRONMENTAL AND / OR  
REGULATORY CONSTRAINTS  
AND / OR OPPORTUNITIES.

DRAWING NOT VALID WITHOUT SEAL, SIGNATURE AND DATE  
© COPYRIGHT 2023, BARRACO AND ASSOCIATES, INC.  
REPRODUCTION, CHANGES OR ASSIGNMENTS ARE PROHIBITED

FILE NAME	J:\23620\BR18.DWG
LOCATION	J:\23620\DWGLBR
PLOT DATE	THU, 3-23-2023 - 3:08 PM
PLOT BY	CHRIS PAULY

CROSS REFERENCED DRAWINGS

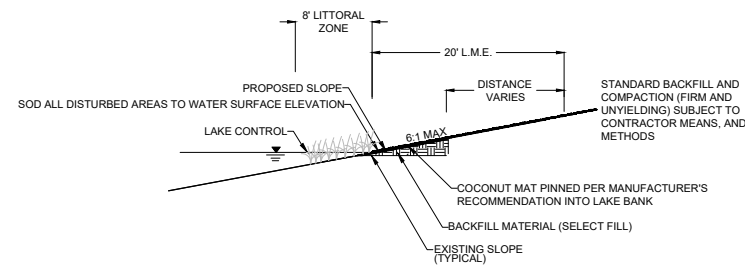
PLAN REVISIONS

PLAN STATUS

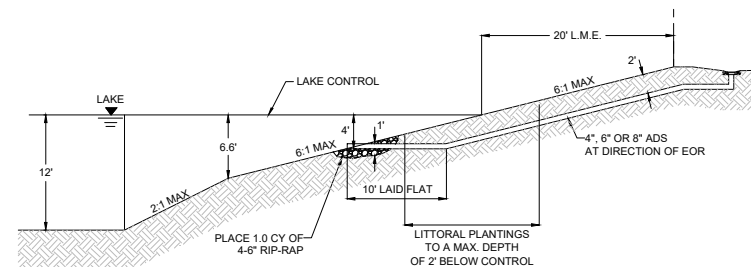
BID EXHIBIT  
03/23/2023

**TYPICAL  
LAKE  
SECTIONS**

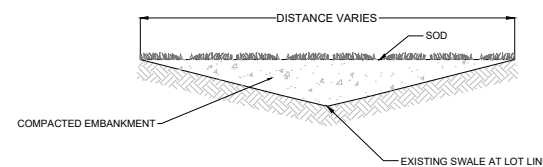
PROJECT / FILE NO.	SHEET NUMBER
<b>23620</b>	<b>4.0</b>



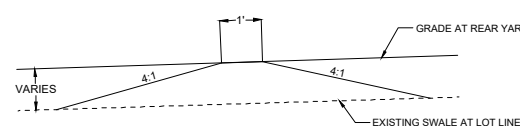
**1** TYPICAL LAKE SECTION  
N.T.S.



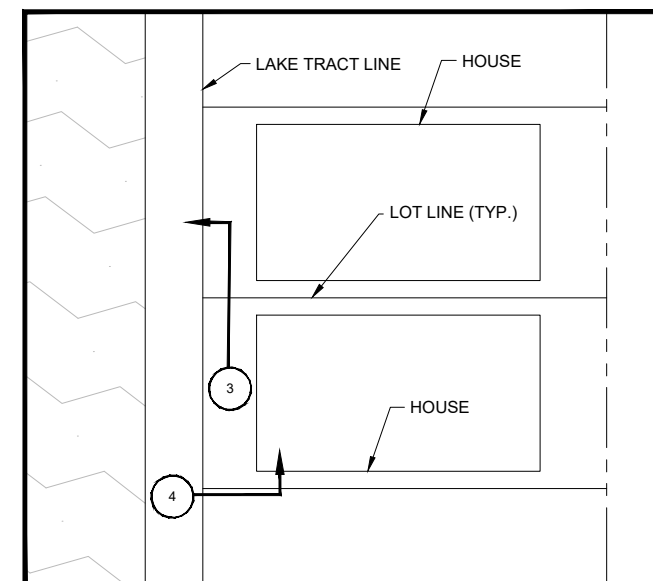
**2** LAKE BANK WITH SECONDARY DRAINAGE  
N.T.S.  
NOTE: THIS SECTION MAY BE IMPLEMENTED AT COMMON LOT LINES BY THE OWNER(S).



**3** SPREADER DRAINAGE OPTION AT LOT LINE  
N.T.S.



**4** SPREADER DRAINAGE OPTION AT LOT LINE  
N.T.S.



**NOTES:**

- BACKFILL MATERIAL SHALL BE COMPACTED TO A FIRM AND UNYIELDING CONDITION PRIOR TO THE PLACEMENT OF THE PROPOSED COCONUT MAT.
- ANY LITTORAL PLANTS DISTURBED DURING CONSTRUCTION SHALL BE REPLACED WITH LIKE SPECIES.
- ANY AREAS DISTURBED DURING THE CONSTRUCTION ACTIVITIES SHALL BE RE-GRADED AND RE-SODDED WITH THE SAME SPECIES.
- CONTRACTOR TO UTILIZE AREAS IDENTIFIED AS "DRAINAGE EASEMENTS" D.E. AND OR LAKE MAINTENANCE EASEMENTS (L.M.E.) IN THIS EXHIBIT FOR ACCESS TO AND FROM LAKE AREAS DURING CONSTRUCTION INCLUDING BUT NOT LIMITED TO LAKE BANKS AND CONSTRUCTION ACCESS AREAS.
- IT SHALL BE THE CONTRACTOR'S RESPONSIBILITY TO COORDINATE WITH THE OWNER'S REPRESENTATIVE TO PROTECT OR TEMPORARILY REMOVE ANY IRRIGATION WITHIN THE WORK AREAS.
- ALL EROSION EQUAL TO OR GREATER THAN 9-INCHES VERTICAL OR STEEPER THAN 3.5' HORIZONTAL TO 1' VERTICAL SHALL BE REPAIRED PER THE CROSS SECTIONS PROVIDED.
- CONTRACTOR SHALL IN-HAUL SELECT FILL FOR BACKFILL MATERIAL AS NEEDED TO OBTAIN LINES AND GRADES REQUIRED.