

DEVELOPMENT ORDER MINOR CHANGE #6

FOR

WILDBLUE SOUTHWEST

****FINAL INSPECTION REQUIRED****
At the completion of the improvements, please
submit a Letter of Substantial Compliance to
schedule a Final Inspection.

PART OF SECTION 17-20 TOWNSHIP 46 SOUTH, RANGE 26 EAST
FORT MYERS, LEE COUNTY, FLORIDA

PROJECT DATA

SITE ADDRESS	PROJECT DATUM	
13500 ALICO ROAD FORT MYERS, FLORIDA 33913	STATE PLANE FLORIDA WEST ZONE NAD 1983 (NSRS2007) NORTH AMERICAN VERTICAL DATUM (NAVD) 1988	
ZONING	RECORD PLAT	
MPD (RESOLUTION Z-15-021)	PENDING	
FLOOD ZONE	STRAP NUMBERS	
ACCORDING TO THE FLOOD INSURANCE RATE MAP NO. 12071C0825F, EFFECTIVE DATE: AUGUST 28, 2008, THE SUBJECT PARCEL IS LOCATED IN FLOOD ZONE "X" (NO SPECIAL FLOOD HAZARD AREA)	19-46-26-L2-070F2.0000 19-46-26-L2-070F2.0010 19-46-26-L2-070F2.0020 19-46-26-L2-070F2.0030	
PERMIT REQUIREMENTS		
AGENCY	STATUS	NOTES
S. FLORIDA WATER MANAGEMENT DISTRICT	APPROVED	36-05075-P
LEE COUNTY DEVELOPMENT ORDER	APPROVED	DOS2018-00007
FLORIDA DEPARTMENT OF HEALTH	APPROVED	0217283-220DSGP
FLORIDA DEPT. OF ENVIRONMENTAL PROTECTION	APPROVED	38436-418-DWC/CM
F.D.O.T. CONNECTION PERMIT	N/A	-
F.D.O.T. DRAINAGE CONNECTION PERMIT	N/A	-
F.D.O.T. UTILITY PERMIT	N/A	-
ARMY CORPS OF ENGINEERS	APPROVED	SAJ-2003-10995
F.D.E.P. NOTICE OF INTENT	APPROVED	-

NOTE: CONTRACTOR MUST OBTAIN AND KEEP ON FILE A COPY OF ALL PERMITS
REQUIRED PRIOR TO COMMENCEMENT OF ANY CONSTRUCTION ACTIVITY

DESIGN TEAM

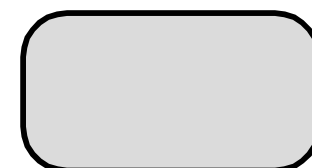
PROJECT ENGINEER	PROJECT MANAGEMENT
CARL A. BARRACO, P.E.	CHRIS VAN BUSKIRK
DESIGN ENGINEER	PROJECT SURVEYOR
TIMOTHY B. GAVIN, P.E.	SCOTT A. WHEELER, PSM
LEAD DESIGN TECHNICIAN	SITE PLANNING
GUY SAPEN	JENNIFER SAPEN
DESIGN STAFF	LAND PLANNING
SCOTT A. WHEELER, JR.	-
QUALITY CONTROL	RECORD DRAWINGS
CHRIS VAN BUSKIRK	-

THESE PLANS MAY HAVE BEEN MODIFIED IN SIZE BY REPRODUCTION.
THIS MUST BE CONSIDERED WHEN OBTAINING SCALED DATA.

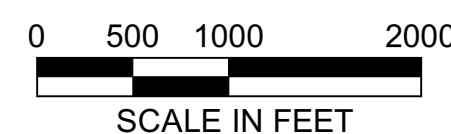
ALL DIMENSIONS ARE IN FEET.



PROJECT
LOCATION



LOCATION MAP



INDEX OF DRAWINGS

ENGINEER OF RECORDS SIGNATURE AND SEAL APPLY TO THE FOLLOWING PLAN SHEETS, EXCLUDING ANY SUPPLEMENTS:

SHEET	DESCRIPTION	XREF	DRAWING NAME
C1.0	COVER SHEET AND LOCATION MAP	A	23526A01.DWG
C2.0	STANDARD NOTES, LEGEND AND ABBREVIATIONS	-	23526A02.DWG
C3.0	AERIAL PHOTOGRAPH AND EXISTING CONDITIONS PLAN	A	23526A06.DWG
C4.0	MASTER SITE AND PHASING PLAN	A	23526A10.DWG
C4.1	MODEL HOME PARKING PLAN	A	23526A10B.DWG
C5.0	MASTER DRAINAGE PLAN	A	23526A11.DWG
C6.0	MASTER UTILITY PLAN	A	23526A12.DWG
C7.11	C7.0-C7.26 DETAILED PAVING, GRADING, AND DRAINAGE PLANS	A	23526A15.DWG
C8.0-C8.5	TYPICAL SECTIONS	-	23526A18.DWG
C9.0	PLAN AND PROFILE KEY SHEET	A	23526A29.DWG
C10.0-C10.8	PLAN AND PROFILES - WILDBLUE BLVD. (STA: 400 & 500)	A,B	23526A30A.DWG
C11.0	PLAN AND PROFILES - AQUA RESERVE CT. (STA: 600)	A,B	23526A30B.DWG
C12.0-C12.1	PLAN AND PROFILES - WATERMAN CT. (STA: 700)	A,B	23526A30C.DWG
C13.0-C13.2	PLAN AND PROFILES - AQUA VIEW LN. (STA: 800)	A,B	23526A30D.DWG
C14.0-C14.2	PLAN AND PROFILES - MARQUESA DR. (STA: 900)	A,B	23526A30E.DWG
C15.0-C15.8	PLAN AND PROFILES - AQUA SHORE DR. (STA: 1000)	A,B	23526A30F.DWG
C16.0	PLAN AND PROFILES - WATER FERN WAY (STA: 1100)	A,B	23526A30G.DWG
C17.0	PLAN AND PROFILES - LIFT STATIONS 7883 & 7884	A,B	23526A30H.DWG
C18.0	CONTROL STRUCTURE DETAILS	-	23526A42.DWG
C19.0-C19.2	TYPICAL CONSTRUCTION DETAILS	-	23526A44.DWG
C20.0	EROSION CONTROL DETAILS	-	23526A50.DWG
C21.0	STORMWATER POLLUTION PREVENTION PLAN	A	23526A52.DWG
C22.0-C22.3	UTILITY DETAILS	-	23526A70.DWG
C23.0-C23.2	LIFT STATION 7883 & 7884 DETAILS	-	23526A71.DWG
C24.0-C24.9	STREET LIGHTING PLANS	A	23526A86.DWG
C25.0-C25.1	OFFSITE TURN LANES GORKSCREW ROAD	A	23526A90.DWG
C26.0	DEWATERING PLAN	-	23526A93.DWG
C27.0	DEEP LAKE MANAGEMENT PLAN	-	23526A94.DWG
C28.0-C28.1	CLEARING & EARTHWORK PLAN	-	23526A99A.DWG
C29.0-C29.1	CLEARING & EARTHWORK PLAN SECTIONS	-	23526A99B.DWG

CROSS-REFERENCED DRAWINGS:

XREF	DESCRIPTION	DRAWING NAME
A	BASE LINEWORK PLAN	23526A00.DWG
B	PROFILE BASE PLAN	23526A00P.DWG
C	SECTIONAL PLAN	23372S00.DWG

Minor Change #6

APPROVED
DOS2018-00007
Tom Sawtell, Plan Reviewer
Lee County Development Services
4/20/2021

PLAN STATUS

MINOR CHANGE #6
03-11-2021

Barraco
and Associates, Inc.

CIVIL ENGINEERING - LAND SURVEYING
LAND PLANNING

www.barraco.net

2271 MCGREGOR BLVD., SUITE 100
POST OFFICE DRAWER 2800
FORT MYERS, FLORIDA 33902-2800
PHONE (239) 461-3170
FAX (239) 461-3169

FLORIDA CERTIFICATES OF AUTHORIZATION
ENGINEERING 7995 - SURVEYING LB-6940

PREPARED FOR



PULTE HOME CORPORATION
24311 WALDEN CENTER DRIVE
SUITE 300
BONITA SPRINGS, FLORIDA 34134

PHONE (239) 498-7711
FAX (239) 498-7707

WWW.PULTEHOMES.COM

PROJECT DESCRIPTION

**WILDBLUE
SOUTHWEST**

LEE COUNTY, FLORIDA

ENGINEER OF RECORD

CARL A. BARRACO, P.E., FOR THE FIRM
FLORIDA P.E. NO. 38536 - CARLB@BARRACO.NET

Digitally signed
by Carl A.
Barraco, P.E.
Date:
2021.03.12
08:13:13 -05'00'

This item has been electronically signed and sealed using a
SHA-1 authentication code.

Printed copies of this document are not considered signed and
sealed and the SHA-1 authentication code must be verified on
any electronic copies.

DRAWING NOT VALID WITHOUT SEAL, SIGNATURE AND DATE
(C) COPYRIGHT 2021, BARRACO AND ASSOCIATES, INC.
REPRODUCTION, CHANGES OR ASSIGNMENTS ARE PROHIBITED

FILE NAME J:\23526\DWG\DO SPINE ROAD\

LOCATION THU 3-11-2021 6:33 AM

PLOT DATE THU 3-11-2021 6:33 AM

PLOT BY SCOTT WHEELER JR

CROSS REFERENCED DRAWINGS

MASTER = BA1-COVER-1.DWG

PLAN REVISIONS

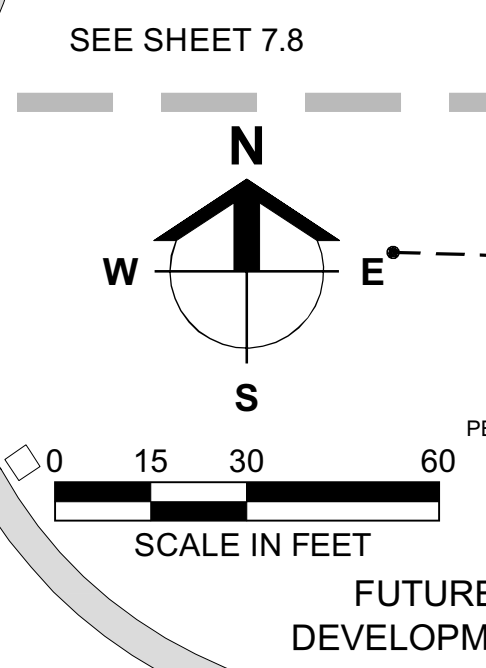
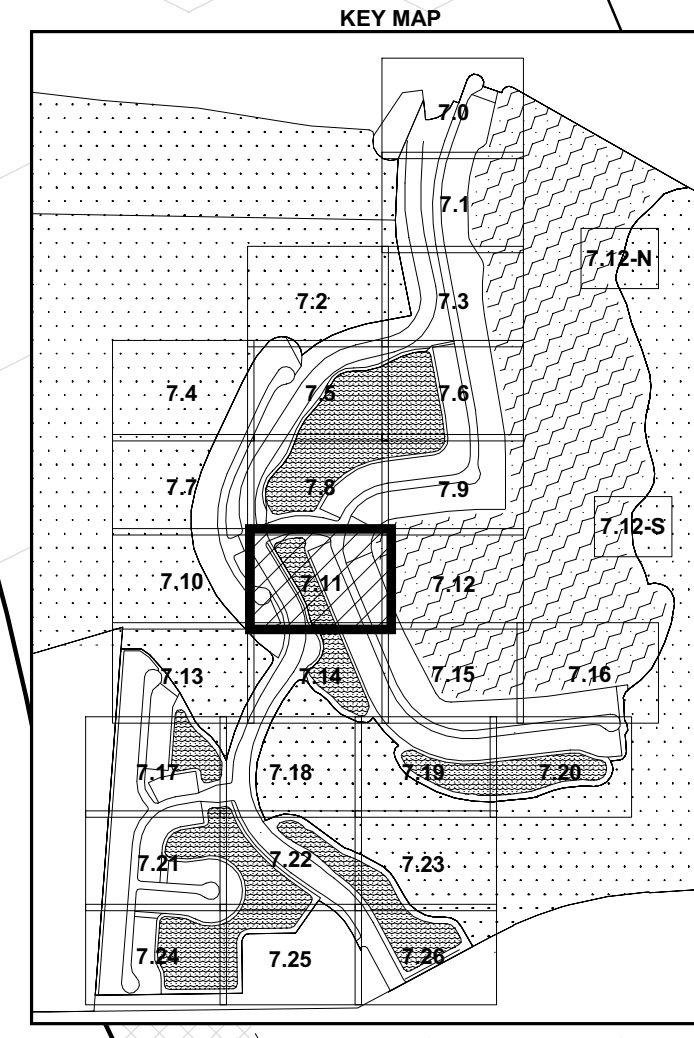
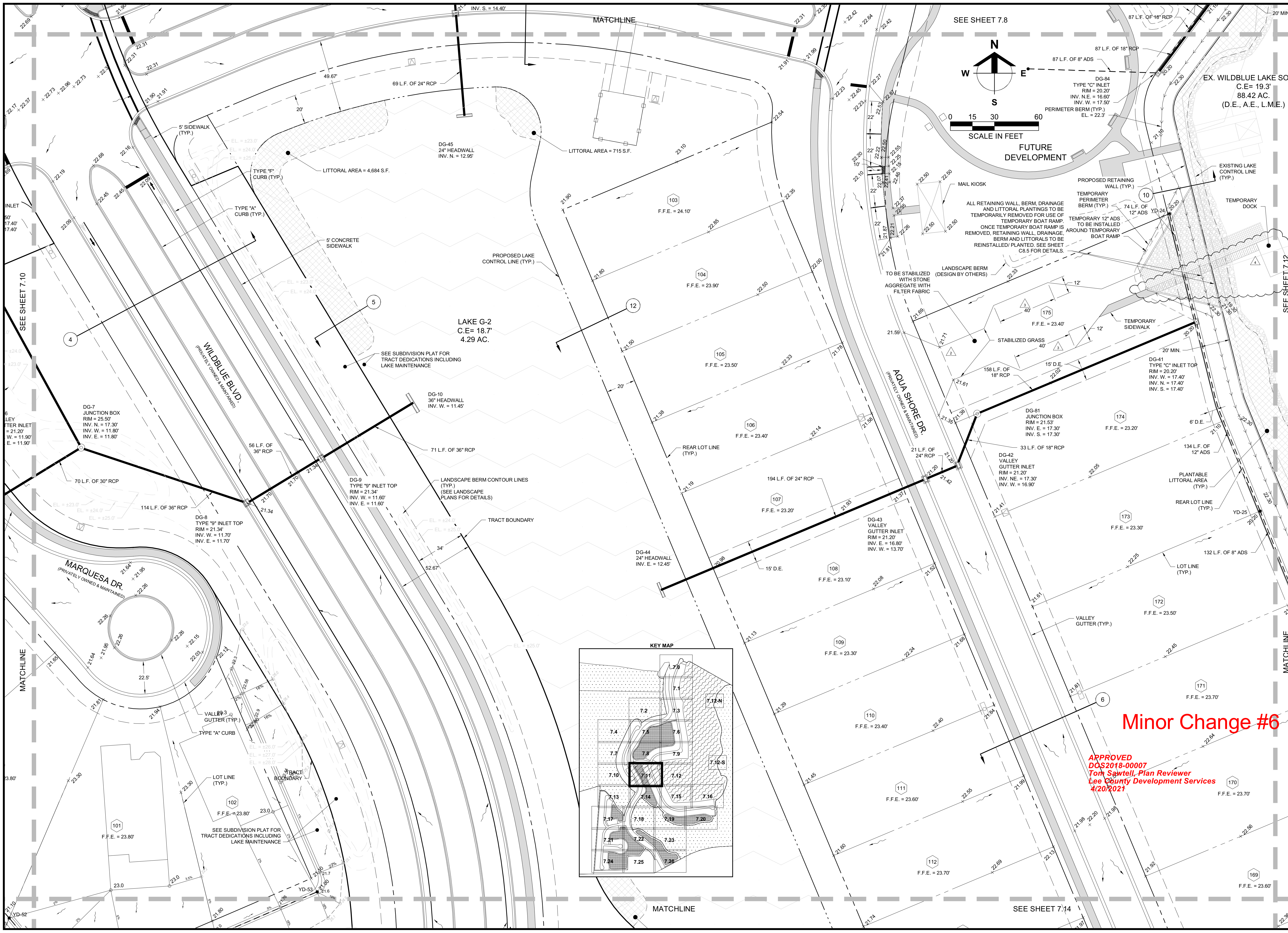
06-03-19	D.O. AMENDMENT #3 CHANGES	△
07-23-19	MINOR CHANGE #4	△
11-05-19	D.O. COMMENTS DATED 09-16-19	△
03-11-21	MINOR CHANGE #6	△

PLAN STATUS

MINOR CHANGE #6
03-11-2021

**COVER SHEET
AND
LOCATION MAP**

PROJECT / FILE NO.	SHEET NUMBER
23526	C1.0



Minor Change #6

APPROVED
D052016-00007
Tom Sawtelle, Plan Reviewer
Lee County Development Services
4/20/2021

Barraco
and Associates, Inc.
CIVIL ENGINEERING - LAND SURVEYING
LAND PLANNING
www.barraco.net
2271 MCGREGOR BLVD., SUITE 100
FORT MYERS, FLORIDA 33902-2800
PHONE (239) 461-3170
FAX (239) 461-3169
FLORIDA CERTIFICATES OF AUTHORIZATION
ENGINEERING 7995 - SURVEYING LB-6940

PREPARED FOR

PULTE HOME CORPORATION
24311 WALDEN CENTER DRIVE
SUITE 300
BONITA SPRINGS, FLORIDA 34134
PHONE (239) 498-7711
FAX (239) 498-7707
WWW.PULTEHOMES.COM
PROJECT DESCRIPTION
WILDBLUE SOUTHWEST
LEE COUNTY, FLORIDA

ENGINEER OF RECORD
CARL A. BARRACO, P.E. FOR THE FIRM
FLORIDA P.E. NO. 38536 - CARLB@BARRACO.NET

CROSS-REFERENCED DRAWINGS: NATURE AND DATE
© COPYRIGHT 2021, BARRACO AND ASSOCIATES, INC.
REPRODUCTION, CHANGES OR ASSIGNMENTS ARE PROHIBITED
FILE NAME | 23526A15.DWG
LOCATION | J:\23526\DWG\DO SPINE ROAD\
PLOT DATE | THU. 3-11-2021 - 7:27 AM
PLOT BY | SCOTT WHEELER JR
CROSS REFERENCED DRAWINGS
BASEPLAN = 23526A00.DWG
SURVEY = 23372S00.DWG
PLAN REVISIONS

06-03-19	D.O. AMENDMENT #3 CHANGES	▲
07-23-19	MINOR CHANGE #4	▲
11-05-19	D.O. COMMENTS DATED 09-16-19	▲
03-11-21	MINOR CHANGE #6	▲

PLAN STATUS
MINOR CHANGE #6
03-11-2021
DETAILED PAVING,
GRADING AND
DRAINAGE PLANS

PROJECT / FILE NO.	SHEET NUMBER
23526	C7.11