

DEVELOPMENT ORDER AMENDMENT NO. 4

FOR

WILDBLUE SOUTHWEST

BOAT RAMP & SALES CENTER CONVERSION

PART OF SECTION 17-20 TOWNSHIP 46 SOUTH, RANGE 26 EAST
FORT MYERS, LEE COUNTY, FLORIDA

PROJECT DATA

SITE ADDRESS	PROJECT DATUM	
19001 & 19231 AQUA SHORE DRIVE FORT MYERS, FLORIDA 33913	STATE PLANE FLORIDA WEST ZONE (NAD 1983 (NSRS2007)) NORTH AMERICAN VERTICAL DATUM (NAVD) 1988	
ZONING	RECORD PLAT	
MPD (RESOLUTION Z-15-021) ADD2015-00190, ADD2017-00118, ADD2017-00121, ADD2017-00180, ADD2018-00017, ADD2018-00049, ADD2018-00099, ADD2018-10042, ADD2018-10053, ADD2018-10043, ADD2019-00049, ADD2019-0071, ADD2019-00147, ADD2019-00184, ADD2021-00049, ADD2022-00058	WILDBLUE SOUTHWEST A REPLAT OF ALL OF TRACT "F-2", WILDBLUE PHASE 2, INSTRUMENT No.2018000070231, LEE COUNTY RECORDS	
FLOOD ZONE	STRAP NUMBERS	
ACCORDING TO THE FLOOD INSURANCE RATE MAP NO. 12071C0625F, EFFECTIVE DATE: AUGUST 28, 2008, THE SUBJECT PARCEL IS LOCATED IN FLOOD ZONE "X" (NO SPECIAL FLOOD HAZARD AREA)	17-46-26-L4-08000.0010 19-46-26-L2-11000.1750	
PERMIT REQUIREMENTS		
AGENCY	STATUS	NOTES
S. FLORIDA WATER MANAGEMENT DISTRICT	APPROVED	36-05075-P
LEE COUNTY DEVELOPMENT ORDER	APPROVED	DOS2018-00007
FLORIDA DEPARTMENT OF HEALTH	APPROVED	0217283-220DSGP
FLORIDA DEPT. OF ENVIRONMENTAL PROTECTION	APPROVED	38436-418-DWC/CM
F.D.O.T. CONNECTION PERMIT	N/A	-
F.D.O.T. DRAINAGE CONNECTION PERMIT	N/A	-
F.D.O.T. UTILITY PERMIT	N/A	-
ARMY CORPS OF ENGINEERS	APPROVED	SAJ-2003-10995
F.D.E.P. NOTICE OF INTENT	APPROVED	-
NOTE: CONTRACTOR MUST OBTAIN AND KEEP ON FILE A COPY OF ALL PERMITS REQUIRED PRIOR TO COMMENCEMENT OF ANY CONSTRUCTION ACTIVITY		

DESIGN TEAM

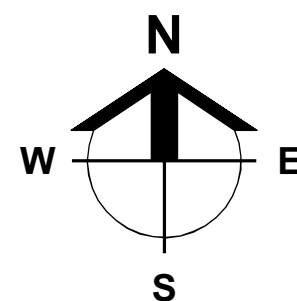
PROJECT ENGINEER	PROJECT MANAGEMENT
CARL A. BARRACO, P.E.	JULIE DANIELEWSKI
DESIGN ENGINEER	PROJECT SURVEYOR
-	SCOTT A. WHEELER, PSM
LEAD DESIGN TECHNICIAN	SITE PLANNING
GUY SAPEN	JENNIFER SAPEN
DESIGN STAFF	LAND PLANNING
SCOTT DALEY	-
QUALITY CONTROL	RECORD DRAWINGS
CHRIS VAN BUSKIRK	PENDING

THESE PLANS MAY HAVE BEEN MODIFIED IN SIZE BY REPRODUCTION.
THIS MUST BE CONSIDERED WHEN OBTAINING SCALED DATA.

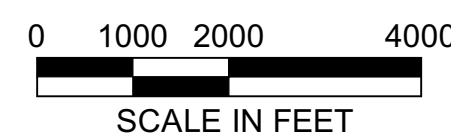
ALL DIMENSIONS ARE IN FEET.



PROJECT
LOCATION



LOCATION MAP



INDEX OF DRAWINGS

ENGINEER OF RECORDS SIGNATURE AND SEAL APPLY TO THE FOLLOWING PLAN SHEETS, EXCLUDING ANY SUPPLEMENTS:

SHEET	DESCRIPTION	XREF	DRAWING NAME
1.0	COVER SHEET AND LOCATION MAP	A,C	23526A01.DWG
2.0	STANDARD NOTES, LEGEND, AND ABBREVIATIONS	-	23526A02.DWG
3.0	AERIAL PHOTOGRAPH AND EXISTING CONDITIONS PLAN	C	23526A06.DWG
4.0	MASTER SITE AND PHASING PLAN	A,B	23526A10A.DWG
5.0	SITE LAYOUT AND DETAILED GRADING PLAN	A,B	23526A10B.DWG
6.0-6.1	DEMOLITION & RESTORATION PLAN	A,B	23526A11.DWG
7.0	TYPICAL CONSTRUCTION DETAILS	-	23526A42.DWG
8.0	BOAT RAMP CONSTRUCTION DETAILS	A	23526A46.DWG
9.0	EROSION CONTROL DETAILS	-	23526A50.DWG
10.0	STORMWATER POLLUTION PREVENTION PLAN	A,B	23526A52.DWG

APPROVED
DOS2018-00007 A04 AMENDMENT #4
Ohdet Kleinmann, Plan Reviewer
Lee County Development Services
6/16/2022

SUPPLEMENTS:

SHEET	DESCRIPTION
-------	-------------

CROSS-REFERENCED DRAWINGS:

XREF	DESCRIPTION	DRAWING NAME
A	BASE LINEWORK PLAN & PROFILE	23526A00.DWG 23526A00B.DWG
B	SURVEY LINEWORK	23372S00.DWG
C	AERIAL PHOTOGRAPH	OVERALL 2021.JPEG

PLAN STATUS

DO AMENDMENT # 4
2022-05-06

Barraco
and Associates, Inc.

CIVIL ENGINEERING - LAND SURVEYING
LAND PLANNING

www.barraco.net

2271 MCGREGOR BLVD., SUITE 100
POST OFFICE DRAWER 2800
FORT MYERS, FLORIDA 33902-2800
PHONE (239) 461-3170
FAX (239) 461-3169

FLORIDA CERTIFICATES OF AUTHORIZATION
ENGINEERING 7995 - SURVEYING LB-6940

PREPARED FOR



PULTE HOME CORPORATION
24311 WALDEN CENTER DRIVE
SUITE 300
BONITA SPRINGS, FLORIDA 34134

PHONE (239) 498-7711
FAX (239) 498-7707

WWW.PULTEHOMES.COM

PROJECT DESCRIPTION

**WILDBLUE
SOUTHWEST**

LEE COUNTY, FLORIDA

ENGINEER OF RECORD

CARL A. BARRACO, P.E., FOR THE FIRM
FLORIDA P.E. NO. 38536 - CARLB@BARRACO.NET

Digitally signed
by Carl A.
Barraco, P.E.
Date:
2022.05.06
13:52:12 -04'00'

This item has been electronically signed and sealed using a
SHA-1 authentication code.

Printed copies of this document are not considered signed and
sealed and the SHA-1 authentication code must be verified on
any electronic copies.

DRAWING NOT VALID WITHOUT SEAL, SIGNATURE AND DATE
(C) COPYRIGHT 2022, BARRACO AND ASSOCIATES, INC.
REPRODUCTION, CHANGES OR ASSIGNMENTS ARE PROHIBITED

FILE NAME J:\23526\DWG\DO SPINE ROAD\BOAT RAMP

LOCATION J:\23526\DWG\DO SPINE ROAD\BOAT RAMP

PLOT DATE FRI, 5-6-2022 - 11:37 AM

PLOT BY GUY SAPEN JR

CROSS REFERENCED DRAWINGS

MASTER = BA1-COVER-1.DWG

PLAN REVISIONS

2022-04-28	DO AMENDMENT #4	

PLAN STATUS

DO AMENDMENT # 4
2022-05-06

**COVER SHEET
AND
LOCATION MAP**

PROJECT / FILE NO.	SHEET NUMBER
23526	1.0

STANDARD ABBREVIATIONS

NOTE: SEE FLORIDA DEPARTMENT OF TRANSPORTATION DESIGN STANDARDS INDEX ABBREV FOR ADDITIONAL ABBREVIATIONS NOT LISTED BELOW.

AASHTO	AMERICAN ASSOCIATION OF TRANSPORTATION OFFICIALS	CULV	CULVERT	FIN	FINISH	M.H.W.	MEAN HIGH WATER	REL	RELOCATED
ABO	ABANDONED	C.Y.	CUBIC YARD	FL	FLORIDA	MI	MILE	REM	REMOVED
AC	ACRE	CYL	CYLINDRICAL	FLEX	FLEXIBLE	REQ	REQUIRED	REQ	REQUIRED
A.D.A.	AMERICANS WITH DISABILITIES ACT	D	DEGREE OF CURVATURE	F.M	FORCE MAIN	RES	RESIDENCE	RES	RESIDENCE
ADJ	ADJUST	DA	DRAINAGE AREA	F.O.C	FACE OF CURB	R.O.C	RAISED REFLECTIVE PAVEMENT	R.O.C	RAISED REFLECTIVE PAVEMENT
A.D.T.	AVERAGE DAILY TRAFFIC	D.B	DEED BOOK	FRAC	FRACTION	M.L.W.	MEAN LOW WATER	R.P.B.D	RAISED REFLECTIVE PAVEMENT
A.E	ACCESS EASEMENT	D.B	DITCH BOTTOM INLET	FREQ	FREQUENCY	MON	MONUMENT	R.P.B.D	RAISED REFLECTIVE PAVEMENT
A.A.D.T	ANNUAL AVERAGE DAILY TRAFFIC	DBL	DOUBLE	FT	FOOT OR FEET	M.O.T	MAINTENANCE OF TRAFFIC	R.P.B.D	RAISED REFLECTIVE PAVEMENT
AGG	AGGREGATE	D.C.S	DEGREE OF CURVATURE (SPIRAL)	FURN	FURNISH	M.P.H	MILES PER HOUR	R.R	RIGHT
A.I.C.P	AMERICAN INSTITUTE OF CERTIFIED PLANNERS	D.D.C.V	DOUBLE DETECTOR CHECK VALVE	G	GRAM	M.S.L	MEAN SEA LEVEL	R.T	RIGHT
ALT	ALTERNATE	D.E	DRAINAGE EASEMENT	GALV	GALVANIZED	M.U.T.C.A	MANUAL ON UNIFORM TRAFFIC CONTROL DEVICES	R.W	RIGHT OF WAY
ALUM	ALUMINUM	DECEL	DECELERATION	GA	GAUGE OR GAGE	N	NORTH	SAN	SANITARY
A.M	12:00 MIDNIGHT UNTIL 11:59 NOON	DEMOLBL	DEMOLITION	GAR	GARAGE	NE	NORTH EAST	SCH	SCHEDULE
A.N.S.I	AMERICAN NATIONAL STANDARDS	DEN	DENSITY	GOVT	GOVERNMENT	NGVD	NATIONAL GEODETIC VERTICAL DATUM OF 1929	SEC	SECTION
APPL	APPLICATION	D.I.P	DUCTILE IRON PIPE	GR	GROSS MILE	NAV	NORTH AMERICAN VERTICAL DATUM OF 1988	SED	SEDIMENT
ASPH	ASPHALT	D.I.P	DUCTILE IRON PIPE	GRD	GROUND	NGS	NATIONAL GEODETIC SURVEY	SH	SHOULDER
ASSY	ASSEMBLY	DIR	DIRECTION	H	HEIGHT	N.G.W	NORMAL HIGH WATER	SHLD	SHOULDER
A.S.T.M	AMERICAN SOCIETY FOR TESTING MATERIALS	DIST	DISTANCE	H.D	HIGH DENSITY	N.T.S	NOT TO SCALE	S.H.W.T	SEASONAL HIGH WATER TABLE
AUX	AUXILIARY	D.O.T	DEPARTMENT OF TRANSPORTATION	HDR	HANDRAIL	N.T.S	NOT TO SCALE	S.F	SQUARE FOOT
AVE	AVENUE	DR	DRIVE	HORIZ	HORIZONTAL	N.T.S	NOT TO SCALE	S.R	STATE ROAD
AVG	AVERAGE	D.R	DRIVEWAY	H.P	HIGH PRESSURE OR HORSE POWER	N.T.S	NOT TO SCALE	ST	STREET
B.E	BURIED ELECTRIC	D.S	DESIGN SPEED	H.W	HIGH WATER	N.T.S	NOT TO SCALE	STA	STATION
B.L	BASE LINE	D.S.W.T	DRY SEASON WATER TABLE	HWY	HIGHWAY	N.T.S	NOT TO SCALE	STD	STANDARD
BLVD	BOULEVARD	DWG	DRAWING	HYD	HYDRAUNT	N.T.S	NOT TO SCALE	STR	STRUCTURE
B.M	BENCHMARK	E	EACH	INT	INTERSECTION	N.T.S	NOT TO SCALE	S.Y	SQUARE YARD
B.O.C	BACK OF CURB	E	EACH	I.D	INVERT	N.T.S	NOT TO SCALE	SW	SOUTHWEST
BOT	BOTTOM	E	EACH	I.E	INVERT ELEVATION	N.T.S	NOT TO SCALE	T.B.M	TEMPORARY BENCH MARK
B.P	BORROW PIT	E	EACH	INC	INCORPORATED	N.T.S	NOT TO SCALE	T.B.D	TO BE DETERMINED
BR	BRIDGE	E	EACH	INCL	INCLUDED	N.T.S	NOT TO SCALE	T.B.R	TO BE REMOVED
BRG	BEARING	E	EACH	INST	INSTALLED OR INSTALLATION	N.T.S	NOT TO SCALE	TE	TEMPORARY
B.T	BURIED TELEPHONE	E	EACH	INST. NO.	INSTALLATION NUMBER	N.T.S	NOT TO SCALE	TEMP	TEMPORARY
BTWN	BETWEEN	E	EACH	INT	INTERSECTION	N.T.S	NOT TO SCALE	TEMP	TEMPORARY
BW	BARBED WIRE	E	EACH	INT	INTERSECTION	N.T.S	NOT TO SCALE	TEMP	TEMPORARY
CALC	CALCULATED	E	EACH	INT	INTERSECTION	N.T.S	NOT TO SCALE	TEMP	TEMPORARY
C	CALCULATED	E	EACH	INT	INTERSECTION	N.T.S	NOT TO SCALE	TEMP	TEMPORARY
CAP	CAPACITY	E	EACH	INT	INTERSECTION	N.T.S	NOT TO SCALE	TEMP	TEMPORARY
CATV	CABLE TELEVISION	E	EACH	INT	INTERSECTION	N.T.S	NOT TO SCALE	TEMP	TEMPORARY
C.B	CATCH BASIN	E	EACH	INT	INTERSECTION	N.T.S	NOT TO SCALE	TEMP	TEMPORARY
CBC	CONCRETE BOX CULVERT	E	EACH	INT	INTERSECTION	N.T.S	NOT TO SCALE	TEMP	TEMPORARY
CBS	CONCRETE BOX STRUCTURE	E	EACH	INT	INTERSECTION	N.T.S	NOT TO SCALE	TEMP	TEMPORARY
CC	CENTER TO CENTER	E	EACH	INT	INTERSECTION	N.T.S	NOT TO SCALE	TEMP	TEMPORARY
CCMB	COUNTY COMMISSIONERS MINUTES	E	EACH	INT	INTERSECTION	N.T.S	NOT TO SCALE	TEMP	TEMPORARY
CEM	CEMENT	E	EACH	INT	INTERSECTION	N.T.S	NOT TO SCALE	TEMP	TEMPORARY
C.F	CUBIC FOOT	E	EACH	INT	INTERSECTION	N.T.S	NOT TO SCALE	TEMP	TEMPORARY
C.I	CAST IRON	E	EACH	INT	INTERSECTION	N.T.S	NOT TO SCALE	TEMP	TEMPORARY
C.I.P	CAST IRON PIPE	E	EACH	INT	INTERSECTION	N.T.S	NOT TO SCALE	TEMP	TEMPORARY
CL	CENTER LINE	E	EACH	INT	INTERSECTION	N.T.S	NOT TO SCALE	TEMP	TEMPORARY
CONC	CONCRETE	E	EACH	INT	INTERSECTION	N.T.S	NOT TO SCALE	TEMP	TEMPORARY
C.M	CONCRETE MONUMENT	E	EACH	INT	INTERSECTION	N.T.S	NOT TO SCALE	TEMP	TEMPORARY
C.M.P	CORRUGATED METAL PIPE	E	EACH	INT	INTERSECTION	N.T.S	NOT TO SCALE	TEMP	TEMPORARY
CO	COUNTY OR COMPANY	E	EACH	INT	INTERSECTION	N.T.S	NOT TO SCALE	TEMP	TEMPORARY
CIO	CLEANOUT	E	EACH	INT	INTERSECTION	N.T.S	NOT TO SCALE	TEMP	TEMPORARY
COL	COLUMN	E	EACH	INT	INTERSECTION	N.T.S	NOT TO SCALE	TEMP	TEMPORARY
COM	COMMERCIAL	E	EACH	INT	INTERSECTION	N.T.S	NOT TO SCALE	TEMP	TEMPORARY
CONST	CONSTRUCTION	E	EACH	INT	INTERSECTION	N.T.S	NOT TO SCALE	TEMP	TEMPORARY
CONTR	CONTRACTOR	E	EACH	INT	INTERSECTION	N.T.S	NOT TO SCALE	TEMP	TEMPORARY
COORD	COORDINATE	E	EACH	INT	INTERSECTION	N.T.S	NOT TO SCALE	TEMP	TEMPORARY
COR	CORNER	E	EACH	INT	INTERSECTION	N.T.S	NOT TO SCALE	TEMP	TEMPORARY
C.P	CONTROL POINT	E	EACH	INT	INTERSECTION	N.T.S	NOT TO SCALE	TEMP	TEMPORARY
C.R	CONTROL ROD	E	EACH	INT	INTERSECTION	N.T.S	NOT TO SCALE	TEMP	TEMPORARY
C.S	CONTROL STRUCTURE	E	EACH	INT	INTERSECTION	N.T.S	NOT TO SCALE	TEMP	TEMPORARY
CTR	CENTER	E	EACH	INT	INTERSECTION	N.T.S	NOT TO SCALE	TEMP	TEMPORARY
C.U.E	COUNTY UTILITY EASEMENT	E	EACH	INT	INTERSECTION	N.T.S	NOT TO SCALE	TEMP	TEMPORARY

GENERAL NOTES

NOTE: SEE ADDITIONAL NOTES ON SITE DEVELOPMENT PLANS AND DETAIL SHEETS WHICH ARE SPECIFIC TO THIS PROJECT. IN THE EVENT OF A CONFLICT, UTILIZE NOTES ON SITE DEVELOPMENT PLANS.

- THESE PLANS HAVE BEEN PREPARED IN ACCORDANCE WITH AND ARE GOVERNED BY THE LATEST EDITIONS OF THE F.D.O.T. STANDARD SPECIFICATIONS FOR ROAD AND BRIDGE CONSTRUCTION, THE F.D.O.T. DESIGN STANDARDS INDEX, AND APPLICABLE DESIGN STANDARDS MODIFICATIONS FOUND AT <http://www.dot.state.fl.us/design> AND ALL LOCAL CODES.
- ALL APPROVALS REQUIRED IN CONJUNCTION WITH THESE NOTES MUST BE OBTAINED IN WRITING BY THE CONTRACTOR. ANY DEVIATIONS FROM THE PLANS AND / OR SPECIFICATIONS MUST BE APPROVED IN ADVANCE BY THE OWNER, ENGINEER AND APPROPRIATE REGULATORY AGENCY.
- CONTRACTOR SHALL ENSURE THAT ALL PERMITS ARE IN PLACE PRIOR TO CONSTRUCTION, THAT COPIES OF ALL PERMITS ARE RETAINED ON SITE AT ALL TIMES AND SHALL ADHERE TO ALL PERMIT CONDITIONS. AT LEAST 72 HOURS PRIOR TO CONSTRUCTION CONTRACTOR SHALL NOTIFY THE LOCAL MAINTENANCE ENGINEER'S OFFICE TO SECURE GENERAL USE PERMITS AND / OR OTHER PERMITS REQUIRED FOR WORK WITHIN F.D.O.T. RIGHT-OF-WAY.
- ALL CONSTRUCTION SHALL COMPLY WITH THE LATEST VERSIONS OF THE AMERICANS WITH DISABILITIES ACT (A.D.A.) AND THE FLORIDA ACCESSIBILITY CODE FOR BUILDING CONSTRUCTION (F.A.C.B.C.). MAXIMUM SLOPE IN ACCESSIBLE PARKING SPACES AND LOADING ZONES SHALL NOT EXCEED 2% IN ALL DIRECTIONS. MAXIMUM RUNNING SLOPE SHALL NOT EXCEED 5% AND CROSS SLOPE SHALL NOT EXCEED 2% ON ALL SIDEWALKS AND CROSSWALKS.
- SIDEWALKS ARE DESIGNED AND INTENDED FOR PEDESTRIAN TRAFFIC ONLY. ALL SIDEWALKS AND CURB CUTS SHALL BE IN ACCORDANCE WITH F.D.O.T. INDEX 520-001 AND SHALL INCLUDE DETECTABLE WARNING SURFACES. VALLEY GUTTER ADJACENT TO CURB CUTS SHALL DEViate FROM STANDARD DETAIL BY NOT EXCEEDING 121 SLOPES.
- THE CONTRACTOR SHALL NOTIFY THE INSPECTOR, OWNER'S REPRESENTATIVE AND APPROPRIATE AGENCY A MINIMUM OF 72 HOURS PRIOR TO ALL INSPECTIONS REQUIRED BY THE RESPECTIVE PERMIT.
- THE CONTRACTOR SHALL NOTIFY THE OWNER AND CONTACT ALL UTILITY COMPANIES FOR LOCATIONS OF EXISTING UTILITIES A MINIMUM OF 72 HOURS PRIOR TO CONSTRUCTION. CONTRACTOR SHALL DETERMINE THE LOCATION OF EXISTING UTILITIES, PAVEMENT, VEGETATION AND OTHER IMPROVEMENTS ARE APPROXIMATE ONLY. THE EXACT SIZES, ELEVATIONS AND LOCATIONS SHALL BE VERIFIED BY THE CONTRACTOR IN THE FIELD PRIOR TO COMMENCING CONSTRUCTION OR ORDERING MATERIALS. CONTRACTOR SHALL NOTIFY ENGINEER / OWNER OF ANY DISCREPANCIES PRIOR TO CONSTRUCTION.
- ANY PUBLIC LAND CORNER OR BENCHMARK WITHIN THE LIMITS OF CONSTRUCTION IS TO BE PROTECTED AND IF IN DANGER OF BEING DESTROYED MUST BE PROPERLY REFERENCED BY THE CONTRACTOR.
- EXISTING IMPROVEMENTS SHALL REMAIN UNLESS NOTED OTHERWISE, AND SHALL BE RESTORED TO A CONDITION EQUIVALENT TO THAT WHICH EXISTED PRIOR TO COMMENCING CONSTRUCTION, AT NO ADDITIONAL COST TO THE OWNER. EXISTING OFF-SITE DRAINAGE PATTERNS SHALL BE MAINTAINED DURING CONSTRUCTION.
- THE CONTRACTOR SHALL BE RESPONSIBLE FOR MAINTAINING TRAFFIC AND USE OF THE EXISTING STREETS ADJACENT TO THE PROJECT. ALL TRAFFIC MAINTENANCE CONTROL SHALL BE IN ACCORDANCE WITH THE LATEST EDITION OF THE FLORIDA MANUAL OF TRAFFIC CONTROL AND SAFE PRACTICES FOR STREET CONSTRUCTION, MAINTENANCE, AND UTILITY OPERATIONS. CONTRACTOR SHALL ASSURE THAT ALL TRAFFIC CONTROL DEVICES MEET ACCEPTABLE STANDARDS AS OUTLINED IN THE LATEST EDITION OF THE AMERICAN TRAFFIC SAFETY SERVICES ASSOCIATION (ATSSA) "QUALITY STANDARDS FOR WORK ZONE TRAFFIC CONTROL DEVICES" AND SHALL IMMEDIATELY REPAIR, REPLACE OR CLEAN DAMAGED, DEFACED OR DIRTY DEVICES. TRAFFIC CONTROL OPERATION PROCEDURES SHALL BE SUBMITTED TO OWNER FOR APPROVAL PRIOR TO BEGINNING CONSTRUCTION. ANY IMPACTS TO TRAFFIC FLOW SHALL BE COORDINATED WITH AND APPROVED BY THE APPROPRIATE LOCAL AGENCY.
- CONTRACTOR SHALL VERIFY ALL DIMENSIONS AND ELEVATIONS PRIOR TO COMMENCEMENT OF CONSTRUCTION. ANY DISCREPANCIES SHALL BE IMMEDIATELY REPORTED TO THE ENGINEER AND OWNER'S REPRESENTATIVE.
- THE LOCATIONS OF PROPOSED DRAINAGE STRUCTURES AND UTILITY LINES MAY BE FIELD ADJUSTED TO PRESERVE EXISTING VEGETATION AS APPROVED IN ADVANCE BY THE ENGINEER. UNDERGROUND CONTRACTOR SHALL MINIMIZE THE WORK AREA AND WIDTH OF TRENCHES TO AVOID DISTURBANCES OF NATURAL VEGETATION. EXERCISE CARE TO PROTECT THE ROOTS OF TREES TO REMAIN. WITHIN THE BRANCH SPREAD OF SUCH TREES, PERFORM ALL TRENCHING BY HAND. OPEN THE TRENCH ONLY WHEN UTILITIES CAN BE INSTALLED IMMEDIATELY. PRUNE INJURED ROOTS CLEANLY AND BACKFILL AS SOON AS POSSIBLE. SPOIL FROM TRENCHES SHALL BE PLACED ONLY ON PREVIOUSLY CLEARED AREAS OR TO PAYMENT OR FINAL ACCEPTANCE. EXCESS ROAD BASE AND COMPACTED SOIL SHALL BE REMOVED FROM ALL LANDSCAPE AREAS PRIOR TO FINAL GRADING.
- SUBGRADE AND LIME/ROCK BASE COURSES TO BE COMPACTED TO 98% MINIMUM OF THE MAXIMUM DRY DENSITY AS SPECIFIED BY AASHTO T-180 TESTING. CONTRACTOR SHALL PROVIDE THE ENGINEER SATISFACTORY DENSITY TESTS FOR SUBGRADE AND LIME/ROCK PRIOR TO PAYMENT OR FINAL ACCEPTANCE. EXCESS ROAD BASE AND COMPACTED SOIL SHALL BE REMOVED FROM ALL LANDSCAPE AREAS PRIOR TO FINAL GRADING.
- SWALE ELEVATIONS SHOWN ARE TO TOP OF SOD. CONTRACTOR TO ADJUST SWALE GRADING ACCORDINGLY. ALL UNPAVED AREAS SHALL BE GRADED TO THE DRAINAGE SYSTEM TO PREVENT STANDING WATER. YARD DRAINS MAY BE ADDED IN GREEN AREAS AS NECESSARY AT THE DIRECTION OF THE LANDSCAPE ARCHITECT OR ENGINEER, AND SHALL HAVE PEDESTRIAN-SAFE GRATES MEETING THE REQUIREMENTS OF H-20 LOADING.
- BERM ELEVATIONS SHOWN ARE THE MINIMUM REQUIRED. CONTRACTOR MAY EXCEED THE MINIMUM BERM ELEVATION BY UP TO 0.5 FEET PROVIDED ALL SLOPE CRITERIA IS MET. ANY CONSTRUCTION OF BERMS IN EXCESS OF THAT LIMIT MUST BE APPROVED BY THE ENGINEER PRIOR TO CONSTRUCTION.
- THE CONTRACTOR SHALL NOTIFY THE ENGINEER WITHIN ONE WEEK OF COMPLETION OF DRAINAGE CONTROL STRUCTURES SO THAT ELEVATIONS MAY BE VERIFIED PRIOR TO COMPLETION OF CONSTRUCTION.
- THE CONTRACTOR IS REQUIRED TO ADJUST ALL EXISTING AND PROPOSED VALVE BOXES, MANHOLE RIMS, GRATES AND OTHER IMPROVEMENTS AS REQUIRED TO MATCH THE FINAL GRADE.
- THE CONTRACTOR SHALL COORDINATE WITH THE OWNERS REPRESENTATIVE IN REGARDS TO THE LOCATION, SIZE AND QUANTITY OF ALL CONDUITS FOR UTILITIES, IRRIGATION, LIGHTING AND OTHER IMPROVEMENTS PRIOR TO CONSTRUCTION OF THE ROADWAY SUBGRADE. CASING AND/OR CONDUIT SHALL HAVE A MINIMUM OF 30" COVER, EXTEND 5' BEYOND THE EDGE OF PAVEMENT, BACK OF CURB AND/OR SIDEWALK AT EACH END, AND ENDS SHALL BE SEALED AND DENOTED WITH MARKING TAP.
- CONTRACTOR SHALL NOTIFY THE ENGINEER 24 HOURS PRIOR TO PLACING SOD ON AREAS THAT REQUIRE CRITICAL MINIMUM OR MAXIMUM ELEVATIONS IN ORDER FOR ENGINEER TO VERIFY SUCH ELEVATIONS. THE OBLIGATION TO ACHIEVE MINIMUM ELEVATIONS REMAINS WITH THE CONTRACTOR.
- SOD A 12" STRIP ADJACENT TO ALL PAVEMENT PER F.D.O.T. REQUIREMENTS. SOD ALL UNPAVED DISTURBED AREAS WITHIN A MINIMUM OF 72 HOURS PRIOR TO CONSTRUCTION. CONTRACTOR SHALL DETERMINE THE LOCATION OF EXISTING UTILITIES, PAVEMENT, VEGETATION AND OTHER IMPROVEMENTS ARE APPROXIMATE ONLY. THE EXACT SIZES, ELEVATIONS AND LOCATIONS SHALL BE VERIFIED BY THE CONTRACTOR IN THE FIELD PRIOR TO COMMENCING CONSTRUCTION OR ORDERING MATERIALS. CONTRACTOR SHALL NOTIFY ENGINEER / OWNER OF ANY DISCREPANCIES PRIOR TO CONSTRUCTION.
- THE CONTRACTOR SHALL REMOVE ALL UNSUITABLE MATERIAL ENCOUNTERED FROM FILL AREAS PRIOR TO PLACEMENT OF FILL, AND SUCH MATERIAL SHALL BE STOCKPILED OR REMOVED AS DIRECTED BY OWNER.
- THE PROPERTY OWNER OR DESIGNATED AUTHORITY IS RESPONSIBLE FOR THE PERPETUAL MAINTENANCE OF ALL FEATURES OF THE DRAINAGE WATER MANAGEMENT SYSTEM AS SHOWN IN THESE DRAWINGS AND AS REQUIRED BY LOCAL, STATE AND FEDERAL PERMITS. IT IS FURTHER RECOMMENDED THAT THE SURFACE WATER MANAGEMENT SYSTEM BE INSPECTED SEMI-ANNUALLY.
- CONTRACTOR SHALL VERIFY DESIGN DETAILS WITH ENGINEER PRIOR TO ORDERING STRUCTURES. STRUCTURE TYPES LABELED ON THE PLANS FOR ITEMS SUCH AS JUNCTION BOXES AND INLETS MAY ONLY BE A REFERENCE TO THE TOP OF THE STRUCTURE. CERTAIN STRUCTURE TYPES REQUIRE A LARGER BOTTOM TO ACCOMMODATE LARGER PIPE SIZES AND/OR PIPE ANGLES. THE APPROPRIATE SIZE AND SHAPE OF THE BOTTOM OF THE STRUCTURE SHALL BE DETERMINED BY THE CONTRACTOR WITH CONSIDERATION GIVEN TO ADJACENT EXISTING OR PROPOSED UTILITIES. THE COST FOR THE ENTIRE STRUCTURE IS INCLUDED IN THE UNIT PRICE FOR THE PRIMARY STRUCTURE.
- STORM DRAIN PIPE LENGTHS ARE APPROXIMATE AND HAVE BEEN MEASURED FROM INSIDE FACE OF STRUCTURE. SANITARY SEWER PIPE LENGTHS ARE APPROXIMATE AND ARE MEASURED FROM THE CENTER OF STRUCTURE.
- CONTRACTOR SHALL MAINTAIN MINIMUM SEPARATION BETWEEN UTILITIES AS SHOWN ON "UTILITY LOCATION DETAIL" AND IN ACCORDANCE WITH APPLICABLE LOCAL UTILITY SERVICE PROVIDER REQUIREMENTS.
- ALL COMPONENTS OF THE POTABLE WATER SYSTEM SHALL BE IN CONFORMANCE WITH AMERICAN NATIONAL STANDARDS INSTITUTE / NSF INTERNATIONAL STANDARD 61. ALL COMPONENTS, INSTALLATION AND TESTING OF THE POTABLE WATER SYSTEM SHALL BE IN ACCORDANCE WITH ALL A.W.W.A. APPLICABLE STANDARDS.
- CONTRACTOR TO COORDINATE WITH ALL OTHER CONTRACTORS WORKING ON THE PROJECT SITE. THE OWNERS REPRESENTATIVE AND WITH ELECTRIC, TELEPHONE AND CABLE COMPANIES TO ASSURE THAT NO SANITARY SEWER, WATERLINE OR IRRIGATION SERVICES ARE INSTALLED UNDER PROPOSED TRANSFORMERS.
- DEFLECTION TESTING IN ACCORDANCE WITH TECHNICAL SPECIFICATIONS FOR GRAVITY SEWER MAY NOT BE UNDERTAKEN UNTIL 30 DAYS AFTER FINAL BACKFILLING OF THE TRENCH IS COMPLETE. SEWER DEFLECTION MAY NOT EXCEED THE MAXIMUM PROVIDED IN THE TECHNICAL SPECIFICATIONS OR 5%, WHICHEVER IS LESS.
- ALL GRAVITY SEWER MAINS SHALL BE TESTED WITH A MANHOLE WITH A DIAMETER OF NOT LESS THAN 96% OF THE INSIDE PIPE DIAMETER. MANHOLE TESTS MUST BE PERFORMED WITHOUT USE OF MECHANICAL PULLING DEVICES.
- NO VEGETATION OR OTHER OBSTRUCTIONS SHALL BE PLACED SO AS TO BLOCK ACCESS OR LINE OF SIGHT TO FIRE HYDRANTS, F.D.C. P.I.V. ETC. IN ACCORDANCE WITH LOCAL FIRE JURISDICTION AND / OR AS SHOWN IN DETAILS.
- ALL CONSTRUCTION SHALL BE IN ACCORDANCE WITH THE FLORIDA FIRE CODE. SEPARATE PERMITS MAY BE REQUIRED FOR ANY DEDICATED FIRE LINE. UNDERGROUND FIRE LINES MUST MEET REQUIREMENT OF NFPA 24. CONTRACTOR TO VERIFY FIRE LINE SIZE WITH BUILDING PLANS PRIOR TO CONST.

SYMBOL LEGEND

NOTE: THE SYMBOLS REPRESENTED BELOW ARE STANDARDS UTILIZED BY THIS FIRM AND NOT ALL ARE REQUIRED FOR THE SUBJECT PROJECT.

DRAINAGE

	VALLEY GUTTER INLET		TYPE 5 INLET (LEFT)
	DITCH BOTTOM INLET		TYPE 5 INLET (RIGHT)
	DRAINAGE JUNCTION BOX		TYPE 6 INLET
	MITERED END SECTION		TYPE 9 INLET
	CONTROL STRUCTURE		TYPE 10 INLET
	HEADWALL		YARD DRAIN
	FLARED END SECTION		FLOW ARROW

UTILITIES

	11.25° BEND		SANITARY SEWER MANHOLE
	22.5° BEND		SINGLE SANITARY SEWER SERVICE
	45° BEND		DOUBLE SANITARY SEWER SERVICE
	90° BEND		CLEANOUT
	TEE		PUMP STATION
	REDUCER		SINGLE IRRIGATION SERVICE
	AIR RELEASE VALVE		DOUBLE IRRIGATION SERVICE
	WYE		SINGLE WATER SERVICE
	CAP OR PLUG		DOUBLE WATER SERVICE
	BACTERIOLOGICAL SAMPLE POINT		FIRE HYDRANT ASSEMBLY
	PERMANENT BLOW OFF ASSEMBLY		PROFILE VIEW
	TEMPORARY BLOW OFF ASSEMBLY		GATE VALVE (PROFILE VIEW)
	45° VERTICAL DEFLECTION		
	GATE VALVE		
	PLUG VALVE		

STANDARD CURB TYPES

	TYPE "A" CURB		TYPE "D" CURB
	TYPE "B" CURB		TYPE "E" CURB
	TYPE "C" CURB		TYPE "F" CURB
	CURB TRANSITION		
	VALLEY GUTTER		

SIGNAGE AND MARKINGS

	SIGN (PLAN VIEW)		LEFT ONLY
	CONSERVATION SIGN LOCATION		RIGHT ONLY
	HANDICAP SYMBOL		LEFT OR RIGHT
	MODEL HOMES, MODEL UNITS, MODEL DISPLAY CENTERS.		STRAIGHT OR RIGHT
	"NO MOWING/HERBICIDING" SIGN ALONG LAKE SHORELINE		STRAIGHT OR LEFT
	LOT NUMBER		STRAIGHT, LEFT OR RIGHT
	BUILDING ID NUMBER		STRAIGHT
	STORM STRUCTURE I.D.		
	SANITARY STRUCTURE I.D.		
	FIRE HYDRANT LABEL		
	SOIL BORING LOCATION		

EROSION CONTROL

	INLET PROTECTION		DOUBLE ROW SILT FENCE
			SINGLE ROW SILT FENCE
			FLOATING TURBIDITY BARRIER

SURVEYING

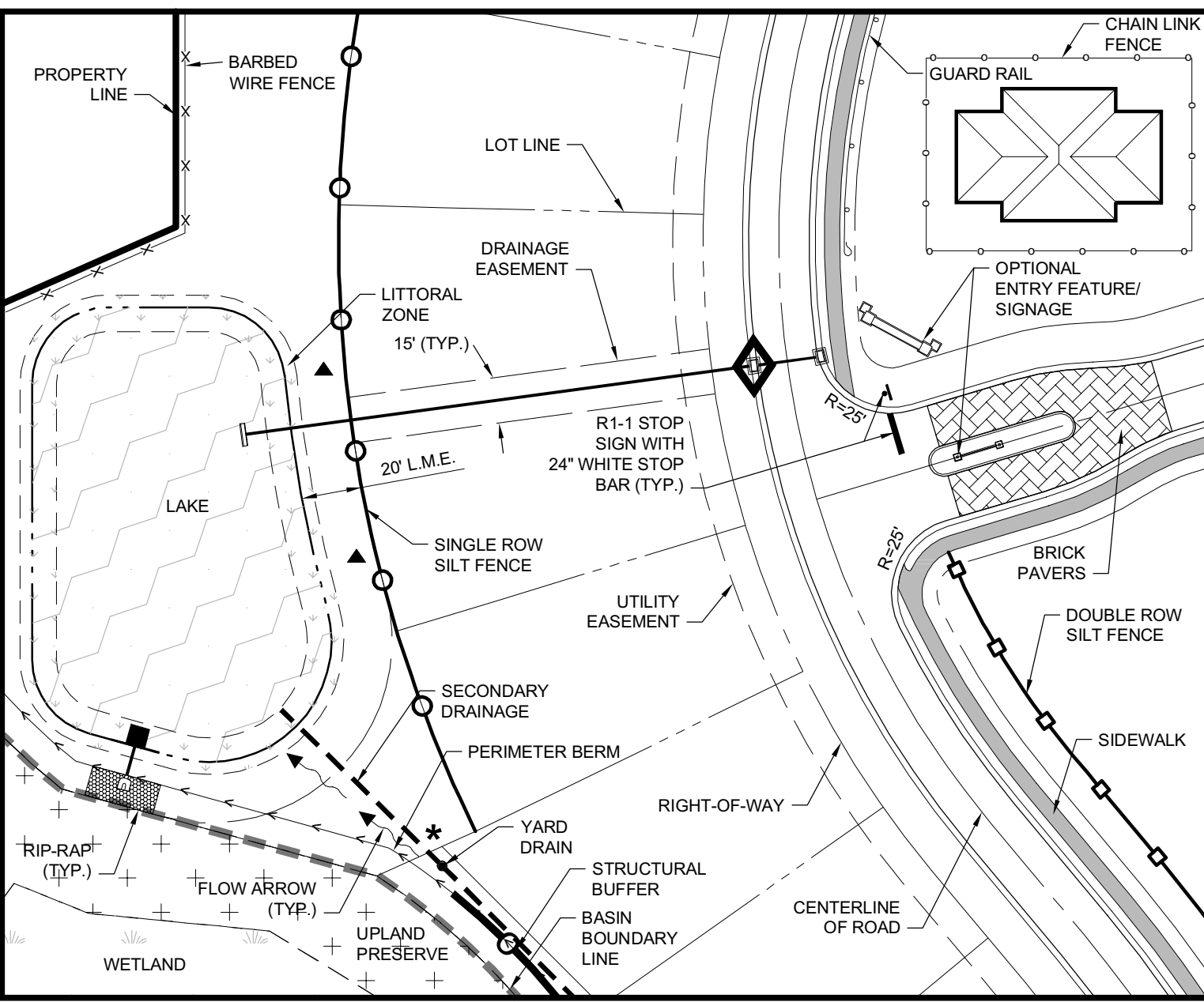
	FOUND NAIL AS NOTED		GAS LINE MARKER
	SET 1/2" IRON ROD WITH CAP STAMPED L86940		TELEPHONE RISER
	SET 4"x4" CONC. MONUMENT STAMPED L86940		WATER BOX
	SET 4"x4" NAIL WITH DISC STAMPED L86940		ELECTRIC BOX
	FOUND CONC. MONUMENT AS NOTED		SIGN
	FOUND IRON PIPE OR IRON ROD AS NOTED		FIRE HYDRANT
	DRAINAGE INLET		WATER VALVE
	MITERED END SECTION		SANITARY MANHOLE
	LIGHT POLE		SANITARY CLEAN OUT
	CONCRETE POWER POLE		SANITARY SEWER VALVE
	WOOD POWER POLE		BENCH MARK
	GUY ANCHOR		

QUANTITIES AND PAYMENT

CONTRACTOR SHALL REFER TO THE BID TABULATION AND PROJECT TECHNICAL SPECIFICATIONS FOR NOTES REGARDING THE METHOD OF PAYMENT FOR SPECIFIC PAY ITEMS. ITEMS NOT SPECIFICALLY REFERENCED IN THE SPECIFICATIONS OR BID TABULATION SHALL BE PAID FOR PER THE LATEST VERSIONS OF THE APPROPRIATE F.D.O.T. DESIGN STANDARDS INDEX AND F.D.O.T. STANDARD SPECIFICATION SECTION.

LINETYPE AND HATCHING LEGEND

NOTE: THE DRAWING BELOW IS PROVIDED AS ONLY AN EXAMPLE OF STANDARD LINETYPES AND HATCHING UTILIZED BY THIS FIRM AND IS NOT REPRESENTATIVE OF THE SUBJECT PROJECT.



STANDARD STREET SIGNS

THE SIGN LEGEND BELOW IS PROVIDED AS A GRAPHICAL REFERENCE TO ONE OR MORE OF THE SIGNS REQUIRED FOR THIS PROJECT. THE LATEST EDITION OF THE MANUAL ON UNIFORM TRAFFIC CONTROL DEVICES (M.U.T.C.D.) SHOULD BE REFERENCED FOR SPECIFIC DETAILS AND LOCATION REQUIREMENTS.

	STOP SIGN - ALL STOP SIGNS SHALL INCLUDE A 24\"/>		LARGE LEFT ARROW (ONE DIRECTION) SIGN		LEFT LANE MUST TURN LEFT SIGN
	YIELD SIGN		LARGE RIGHT ARROW (ONE DIRECTION) SIGN		RIGHT LANE MUST TURN RIGHT SIGN
	DO NOT ENTER SIGN		TWO-DIRECTION LARGE ARROW SIGN		ONE WAY LEFT SIGN
	HANDICAP PARKING SIGN		PEDESTRIAN CROSSING SIGN		ONE WAY RIGHT SIGN
	SPEED LIMIT SIGN		DIAGONAL ARROW PLAQUE		LEFT TURN ONLY SIGN
	NO OUTLET SIGN		RIGHT TURN ONLY SIGN		
	KEEP RIGHT SIGN				
	PRESERVE SIGN				
	END OF ROADWAY MARKERS				
	NO PARKING FIRE LANE SIGN				

SIGNING AND PAVEMENT NOTES

- ALL SIGNING AND PAVEMENT MARKINGS SHALL BE IN ACCORDANCE WITH THE LATEST EDITIONS OF THE F.D.O.T. STANDARDS FOR ROAD AND BRIDGE CONSTRUCTION, THE F.D.O.T. DESIGN STANDARDS INDEX, THE MANUAL ON UNIFORM TRAFFIC CONTROL DEVICES (M.U.T.C.D.) AND ALL APPLICABLE LOCAL STANDARDS. UTILIZATION OF THE 2009 M.U.T.C.D. SHALL BE IN ACCORDANCE WITH F.D.O.T. POLICY.
- DURING CONSTRUCTION, THE CONTRACTOR SHALL COMPLY WITH THE LATEST EDITIONS OF THE "STATE OF FLORIDA MANUAL OF TRAFFIC CONTROL AND SAFE PRACTICES FOR STREET AND HIGHWAY CONSTRUCTION, MAINTENANCE, AND UTILITY OPER



APPROVED
DOS2018-00007 A04 AMENDMENT #4
Ohdet Kleinmann, Plan Reviewer
Lee County Development Services
6/16/2022

Barraco
and Associates, Inc.
CIVIL ENGINEERING - LAND SURVEYING
LAND PLANNING
www.barraco.net
2271 MCGREGOR BLVD., SUITE 100
POST OFFICE DRAWER 2800
FORT MYERS, FLORIDA 33902-2800
PHONE (239) 461-3170
FAX (239) 461-3169
FLORIDA CERTIFICATES OF AUTHORIZATION
ENGINEERING 7995 - SURVEYING LB-6940

PREPARED FOR

Pulte
Homes
PULTE HOME CORPORATION
24311 WALDEN CENTER DRIVE
SUITE 300
BONITA SPRINGS, FLORIDA 34134
PHONE (239) 498-7711
FAX (239) 498-7707
WWW.PULTEHOMES.COM

PROJECT DESCRIPTION

WILDBLUE
SOUTHWEST

LEE COUNTY, FLORIDA

ENGINEER OF RECORD
CARL A. BARRACO, P.E., FOR THE FIRM
FLORIDA P.E. NO. 38536 - CARLB@BARRACO.NET

DRAWING NOT VALID WITHOUT SEAL, SIGNATURE AND DATE
© 2022 BARRACO AND ASSOCIATES, INC.
REPRODUCTION, CHANGES OR ASSIGNMENTS ARE PROHIBITED

FILE NAME | 23526A06.DWG
LOCATION | J:\23526\DWG\DO SPINE ROAD\BOAT RAMP
PLOT DATE | FRI, 5-6-2022 - 11:39 AM
PLOT BY | GUY SAPEN JR

CROSS REFERENCED DRAWINGS

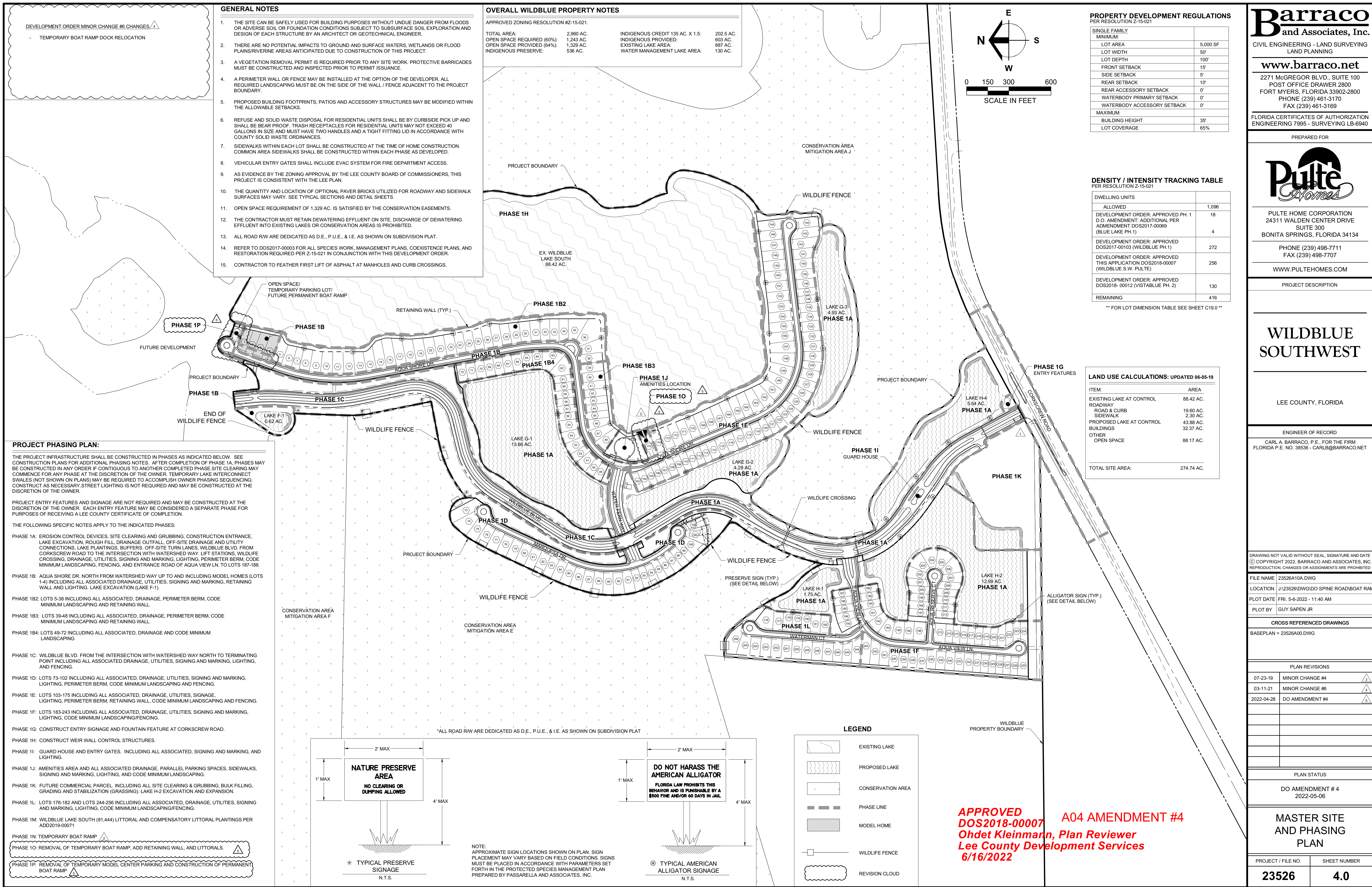
PLAN REVISIONS		
2022-04-28	DO AMENDMENT #4	⚠

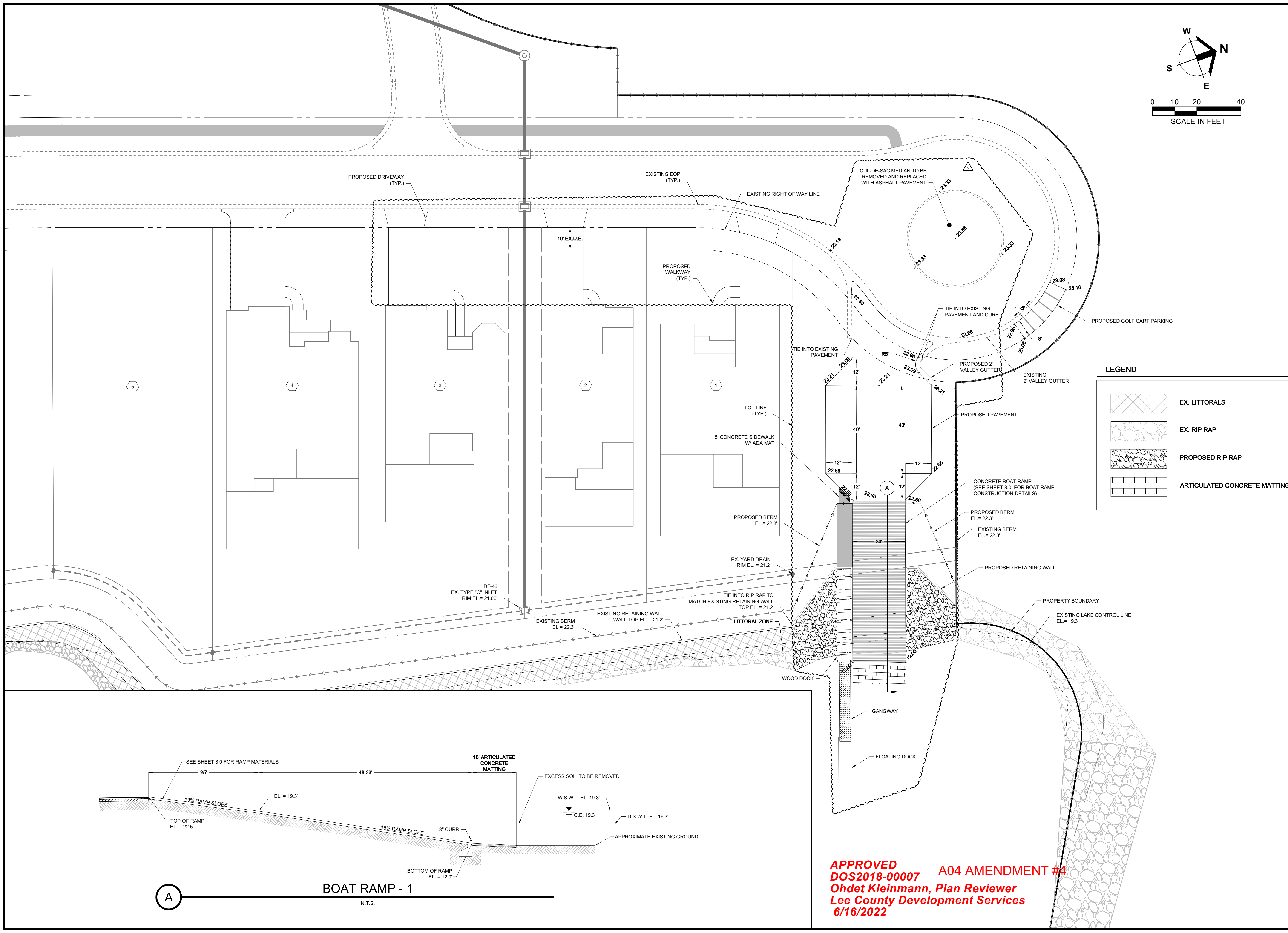
PLAN STATUS

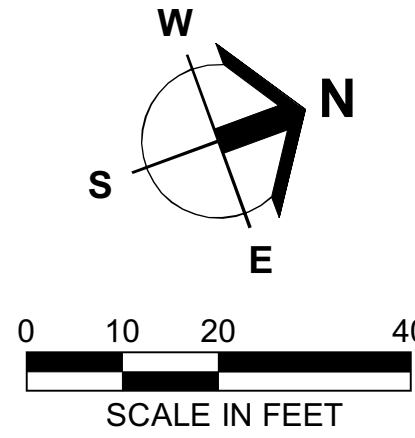
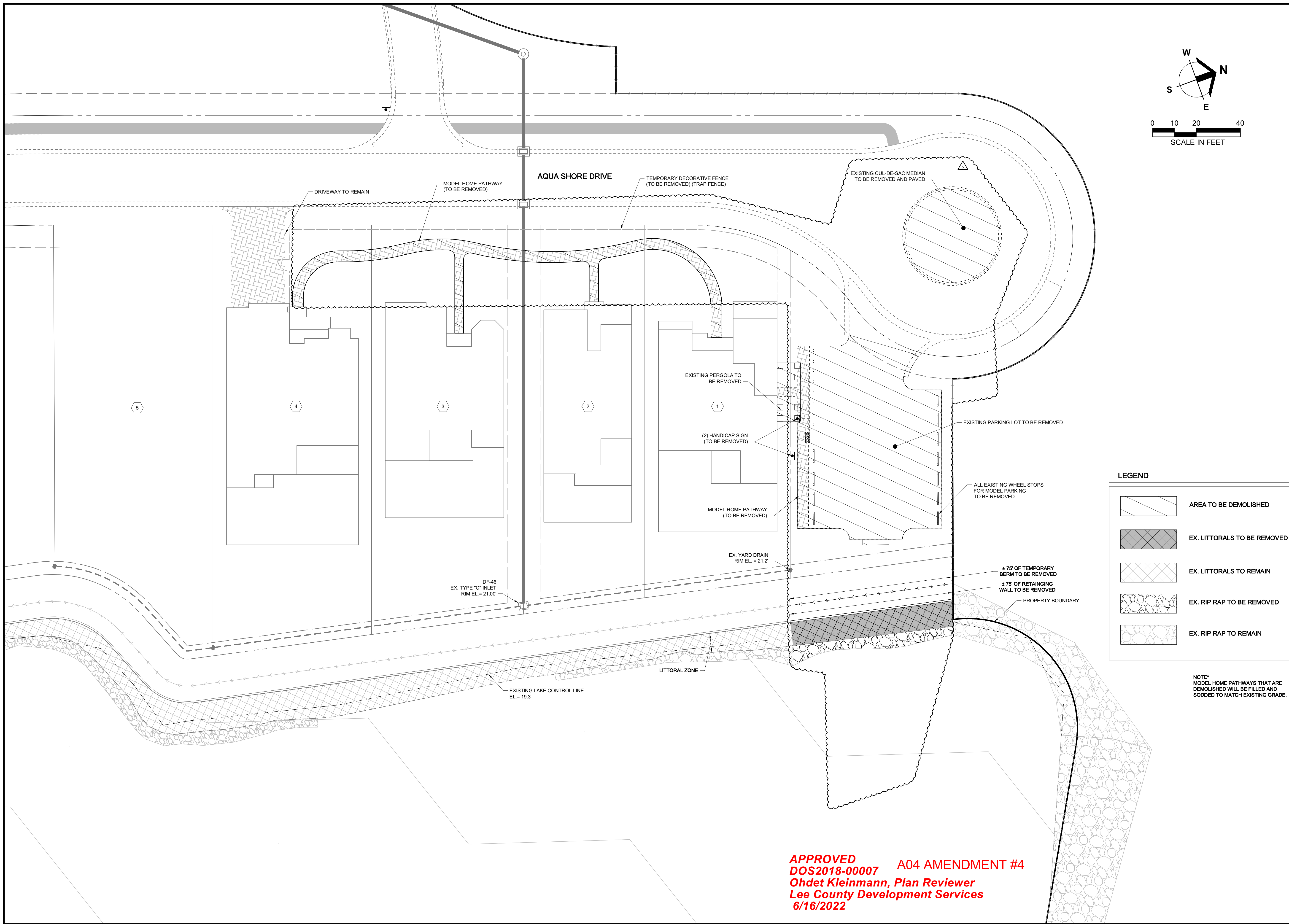
DO AMENDMENT # 4
2022-05-06

AERIAL PHOTOGRAPH
AND EXISTING
CONDITIONS PLAN

PROJECT / FILE NO.	SHEET NUMBER
23526	3.0







Barraco
and Associates, Inc.
CIVIL ENGINEERING - LAND SURVEYING
LAND PLANNING
www.barraco.net
2271 MCGREGOR BLVD., SUITE 100
POST OFFICE DRAWER 2800
FORT MYERS, FLORIDA 33902-2800
PHONE (239) 461-3170
FAX (239) 461-3169
FLORIDA CERTIFICATES OF AUTHORIZATION
ENGINEERING 7995 - SURVEYING LB-6940

PREPARED FOR
Pulte
HOMES
PULTE HOME CORPORATION
24311 WALDEN CENTER DRIVE
SUITE 300
BONITA SPRINGS, FLORIDA 34134
PHONE (239) 498-7711
FAX (239) 498-7707
WWW.PULTEHOMES.COM

PROJECT DESCRIPTION
**WILDBLUE
SOUTHWEST**
LEE COUNTY, FLORIDA

ENGINEER OF RECORD
CARL A. BARRACO, P.E., FOR THE FIRM
FLORIDA P.E. NO. 38536 - CARLB@BARRACO.NET

DRAWING NOT VALID WITHOUT SEAL, SIGNATURE AND DATE
© COPYRIGHT 2022, BARRACO AND ASSOCIATES, INC.
REPRODUCTION, CHANGES OR ASSIGNMENTS ARE PROHIBITED
FILE NAME | 23526A36.DWG
LOCATION | J:\23526\DWG\DO SPINE ROAD\BOAT RAMP
PLOT DATE | FRI, 5-6-2022 - 11:42 AM
PLOT BY | GUY SAPEN JR

CROSS REFERENCED DRAWINGS

PLAN REVISIONS
2022-04-28 DO AMENDMENT #4

PLAN STATUS
DO AMENDMENT # 4
2022-05-06

DEMOLITION AND
RESTORATION
PLAN

PROJECT / FILE NO. **23526** SHEET NUMBER **6.0**

APPROVED A04 AMENDMENT #4
DOS2018-00007
Ohdet Kleinmann, Plan Reviewer
Lee County Development Services
6/16/2022

Barraco

and Associates, Inc.

CIVIL ENGINEERING - LAND SURVEYING
LAND PLANNING

www.barraco.net

2271 MCGREGOR BLVD., SUITE 100
FORT MYERS, FLORIDA 33902-2800
PHONE (239) 461-3170
FAX (239) 461-3169

FLORIDA CERTIFICATES OF AUTHORIZATION
ENGINEERING 7995 - SURVEYING LB-6940

PREPARED FOR

Pulte

Homeworks

PULTE HOME CORPORATION
24311 WALDEN CENTER DRIVE
SUITE 300
BONITA SPRINGS, FLORIDA 34134

PHONE (239) 498-7711
FAX (239) 498-7707

WWW.PULTEHOMES.COM

PROJECT DESCRIPTION

WILDBLUE
SOUTHWEST

LEE COUNTY, FLORIDA

ENGINEER OF RECORD

CARL A. BARRACO, P.E., FOR THE FIRM
FLORIDA P.E. NO. 38536 - CARLB@BARRACO.NET

DRAWING NOT VALID WITHOUT SEAL, SIGNATURE AND DATE
© COPYRIGHT 2022, BARRACO AND ASSOCIATES, INC.
REPRODUCTION, CHANGES OR ASSIGNMENTS ARE PROHIBITED

FILE NAME | 23526A42.DWG

LOCATION | J:\23526\DWG\DO SPINE ROAD\BOAT RAMP

PLOT DATE | FRI, 5-6-2022 - 11:43 AM

PLOT BY | GUY SAPEN JR

CROSS REFERENCED DRAWINGS

PLAN REVISIONS

PLAN STATUS

DO AMENDMENT # 4
2022-05-06

TYPICAL
CONSTRUCTION
DETAILS

PROJECT / FILE NO.

23526

SHEET NUMBER

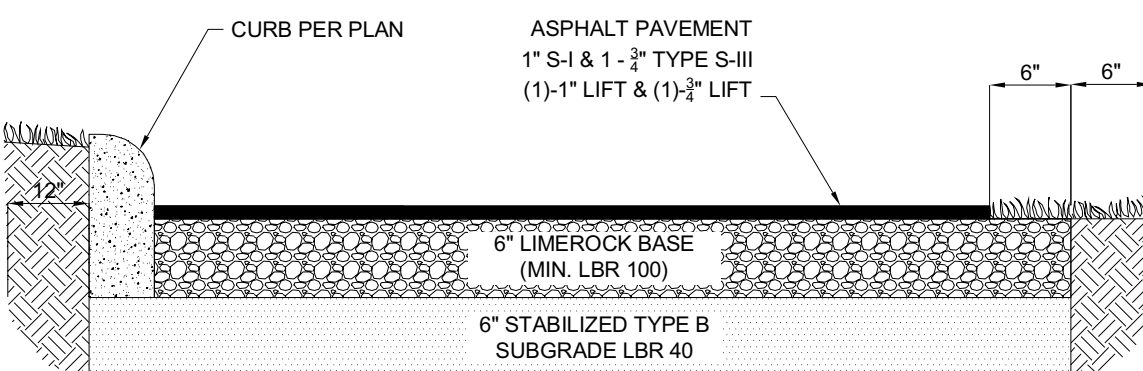
7.0

NOTES

1. TWO LIFTS (1)-1" LIFT & (1)-3/4" LIFT OF TYPE S-III ASPHALTIC CONCRETE. THE FIRST LIFT SHALL BE PLACED PRIOR TO CERTIFICATE OF COMPLETION FOR SITE WORK.

2. LIMEROCK BASE AND STABILIZED SUBGRADE SHALL BE COMPACTED TO A MINIMUM OF 98% OF MODIFIED PROCTOR (AASHTO T-180).

3. CRUSHED CONCRETE MAY BE UTILIZED AS AN ALTERNATIVE TO LIMEROCK AT THE SAME THICKNESS SPECIFIED FOR LIMEROCK.



TYPICAL PAVEMENT SECTION

N.T.S.

NOTES

1. PAVER BRICKS MAY BE UTILIZED IN PLACE OF CONCRETE SIDEWALK. SEE LANDSCAPE PLANS FOR PAVER BRICK LOCATIONS, THICKNESS, SIZE, COLOR, PATTERN, AND SPECIFICATIONS. PAVER BRICK SEALANT OR REPELLANT MAY BE USED AT THE OWNER'S DISCRETION.

2. CONCRETE SHALL HAVE A COMPRESSIVE STRENGTH OF 3,000 PSI. AT 28 DAYS.

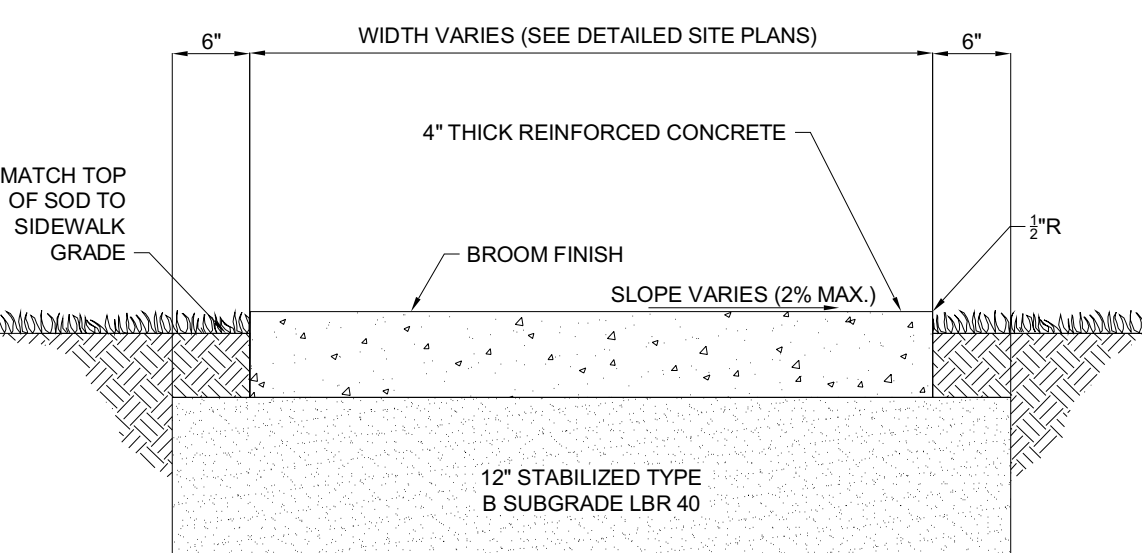
3. SIDEWALK SHALL HAVE CONTRACTION JOINTS AT 5' INTERVALS AND AN EXPANSION JOINT EVERY 100'.

4. MAXIMUM LONGITUDINAL SLOPE FOR DISABLED ACCESSIBLE SIDEWALK SHALL BE 1:20.

5. TOP OF SOD TO BE FLUSH WITH SIDEWALK TO PROVIDE POSITIVE SLOPE TO PREVENT PONDING.

6. FIBER REINFORCEMENT MAY BE SUBSTITUTED FOR WIRE MESH REINFORCEMENT AT THE DISCRETION OF THE OWNER.

7. COST OF STABILIZED SUBGRADE FOR SIDEWALK TO BE INCLUDED IN UNIT COST FOR SIDEWALK.



CONCRETE SIDEWALK

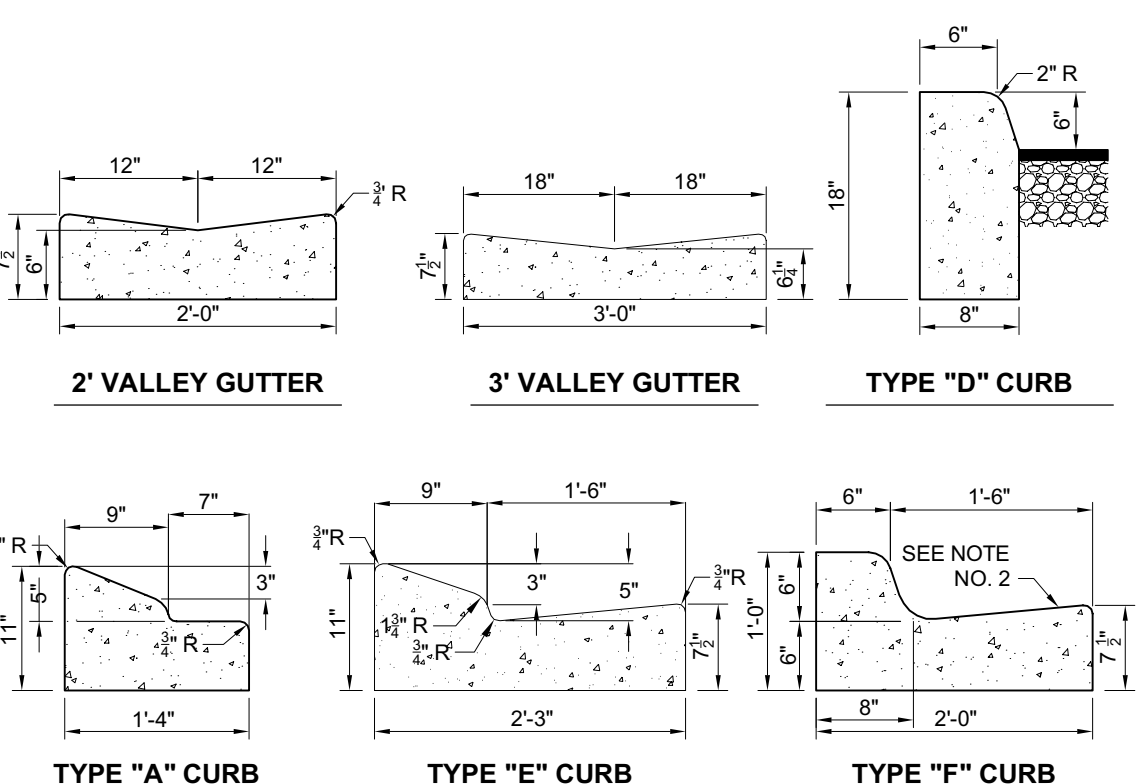
N.T.S.

NOTES

1. SEE F.D.O.T. STANDARD PLANS INDEX #520-001 FOR ADDITIONAL DETAILS.

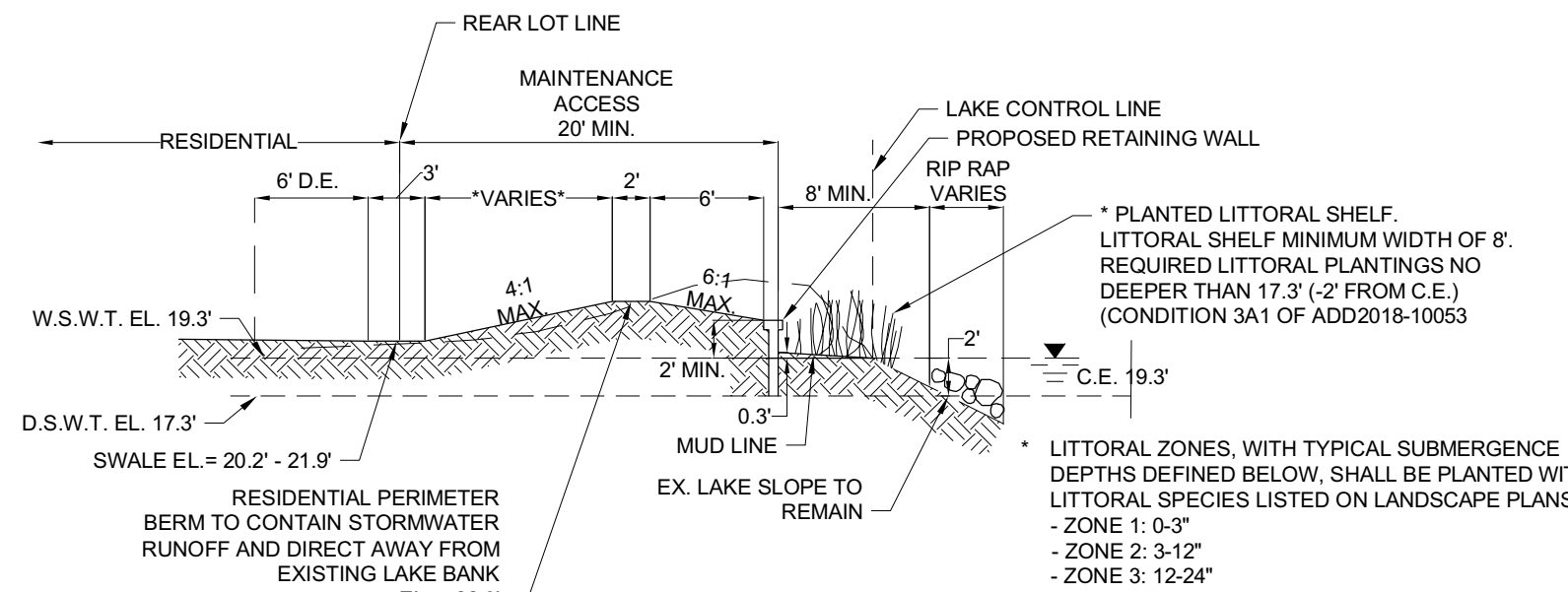
2. WHEN USED ON HIGH SIDE OF ROADWAYS, THE CROSS SLOPE OF THE GUTTER SHALL MATCH THE CROSS SLOPE OF THE ADJACENT PAVEMENT. THE THICKNESS OF THE LIP SHALL BE 6", UNLESS OTHERWISE SHOWN ON PLANS.

3. CONCRETE SHALL HAVE A COMPRESSIVE STRENGTH OF 3,000 PSI. WITHIN 28 DAYS UNLESS NOTED OTHERWISE.



CONCRETE CURB

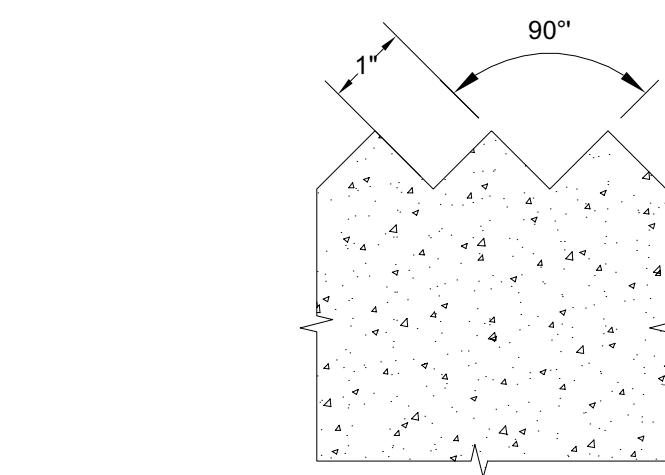
N.T.S.



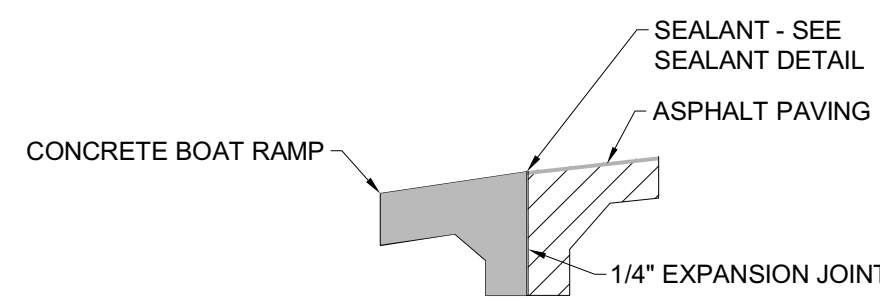
2 SINGLE- FAMILY TO EXISTING LAKE

N.T.S.

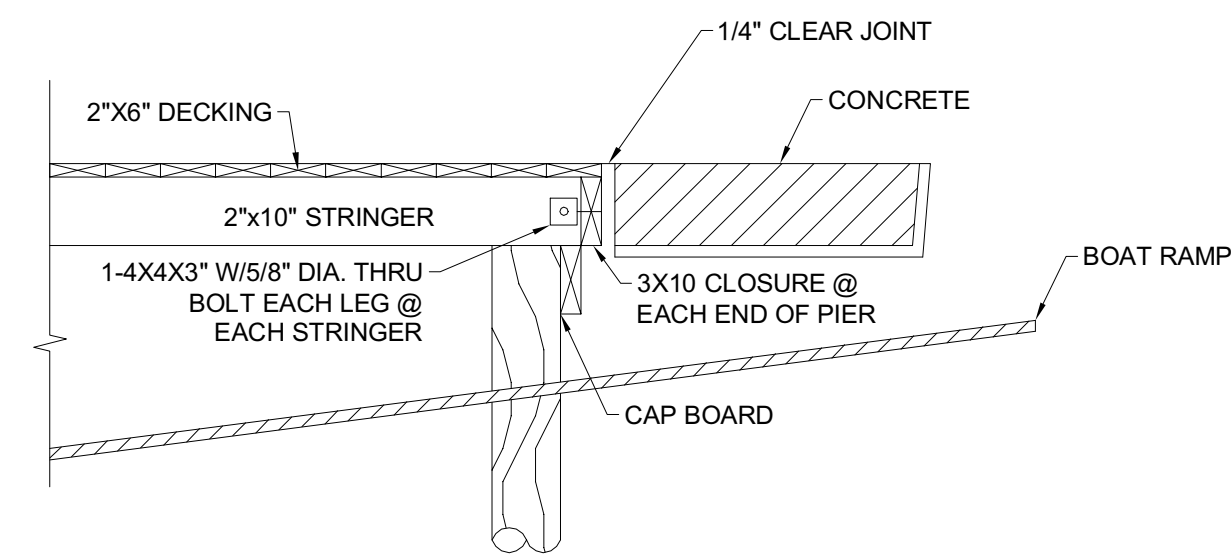
APPROVED
DOS2018-00007 A04 AMENDMENT #4
Ohdet Kleinmann, Plan Reviewer
Lee County Development Services
6/16/2022



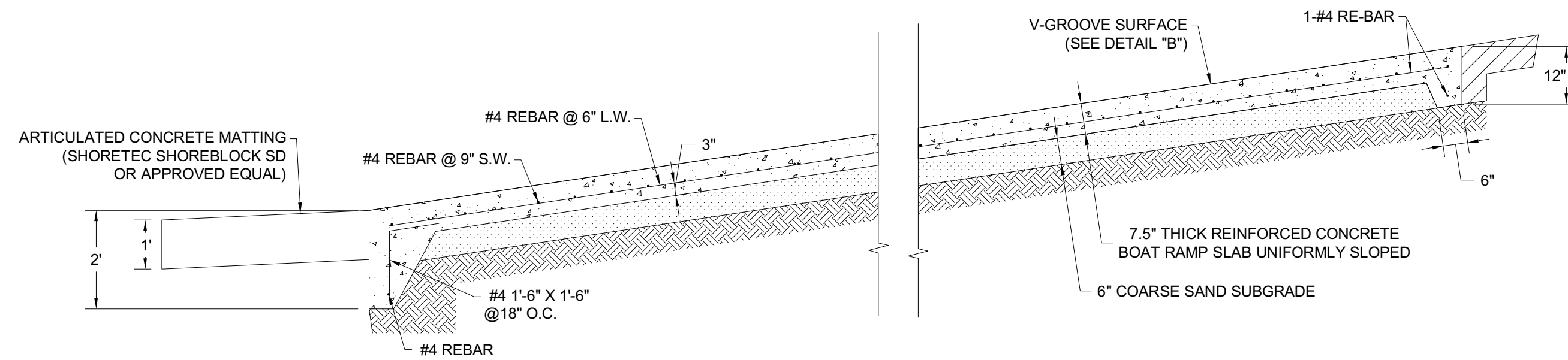
B V-GROOVE DETAIL
N.T.S.



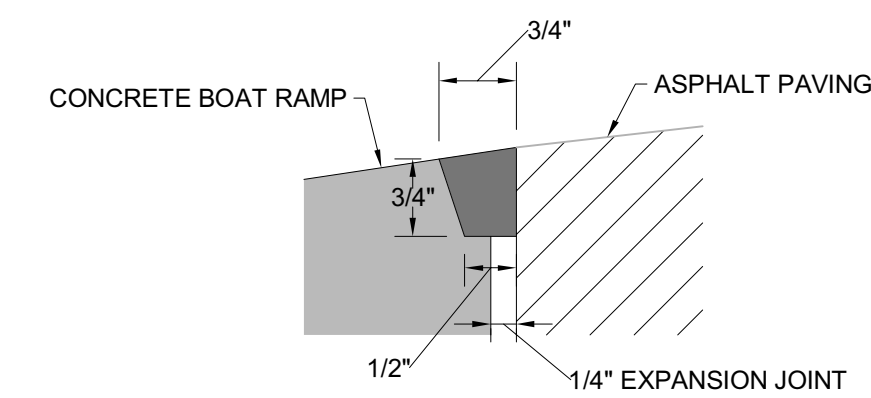
C CONCRETE RAMP TO ASPHALT CONNECTION
N.T.S.



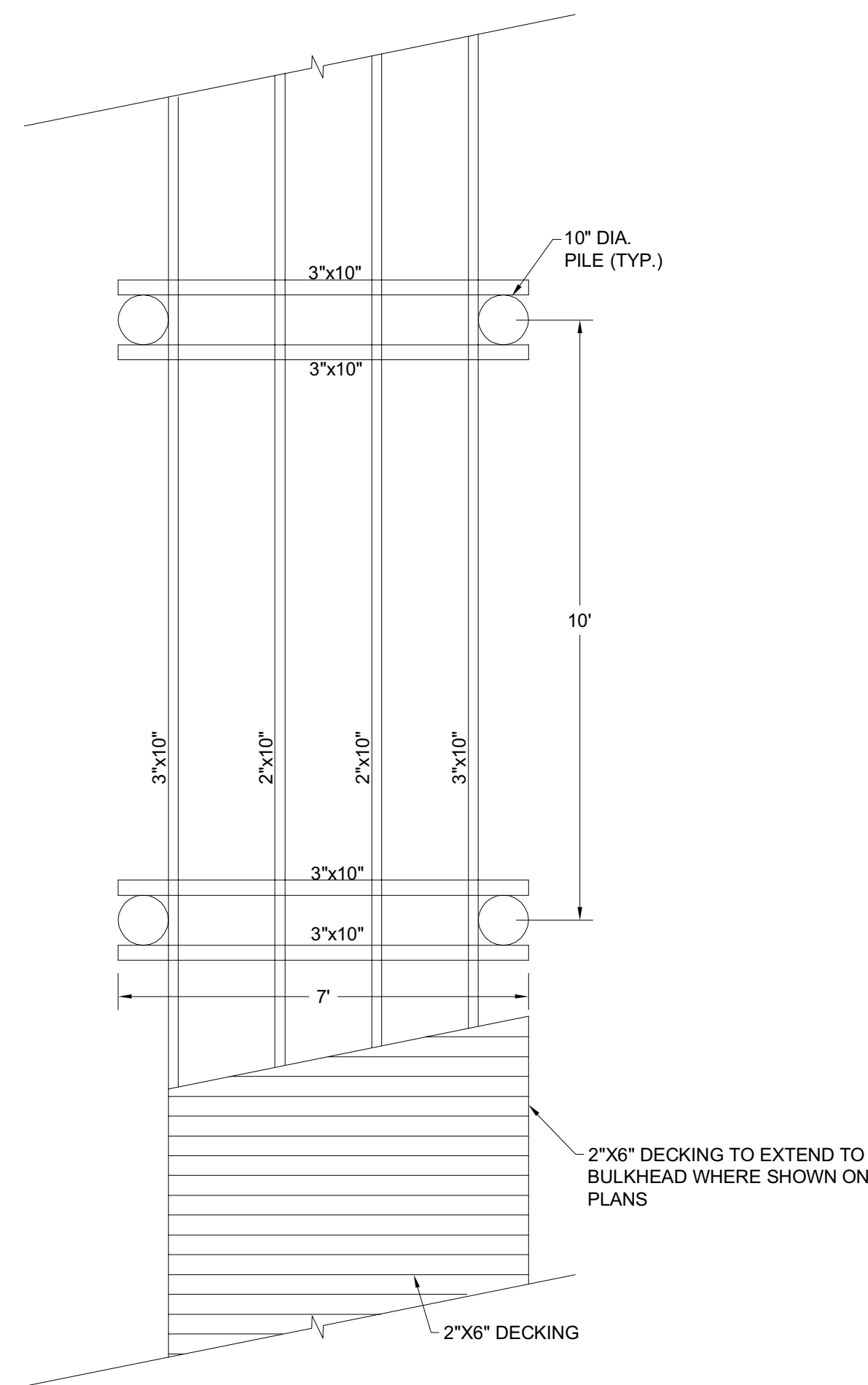
D DETAIL @ END OF DOCK
N.T.S.



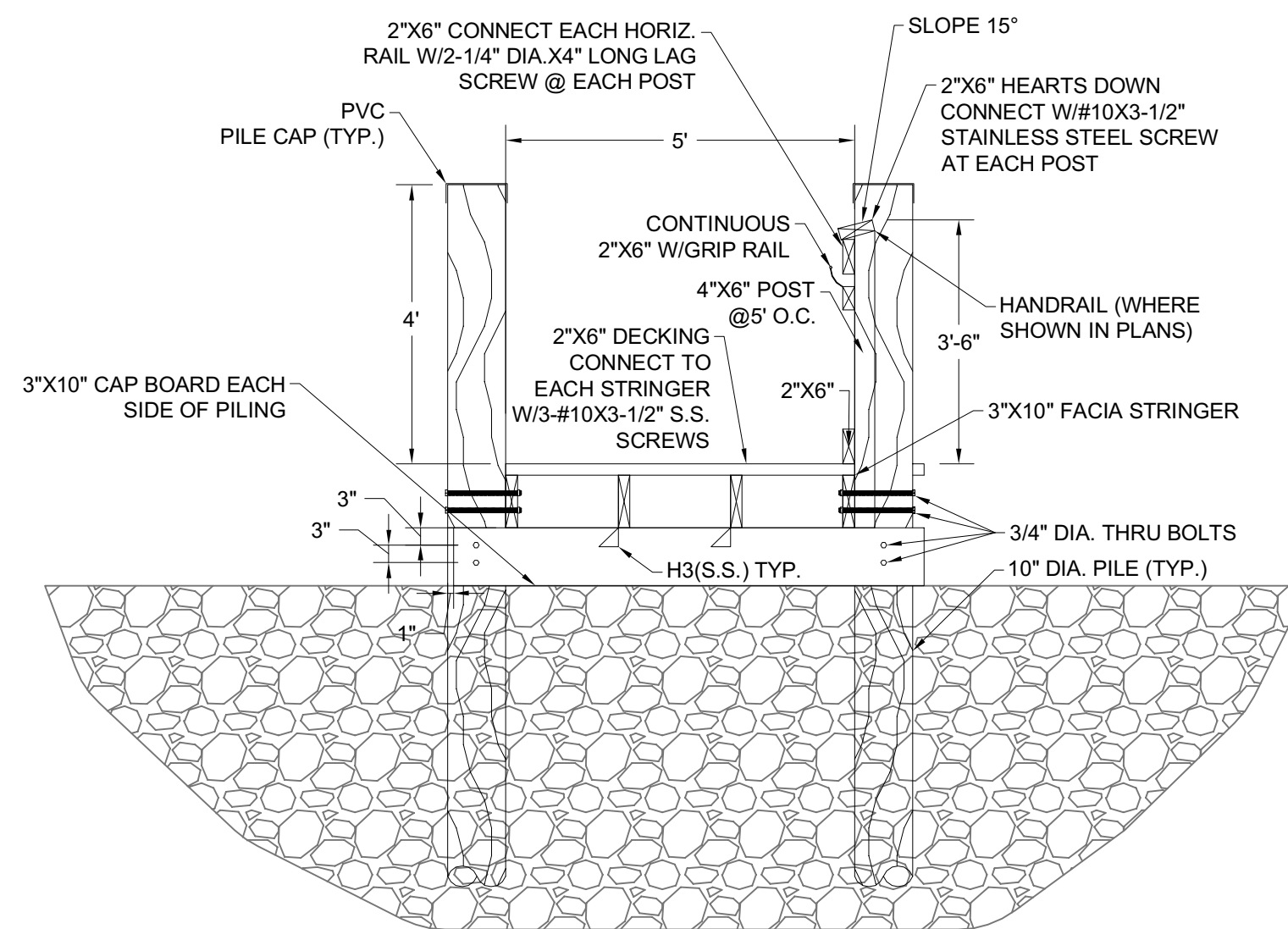
A BOAT RAMP DETAIL
N.T.S.



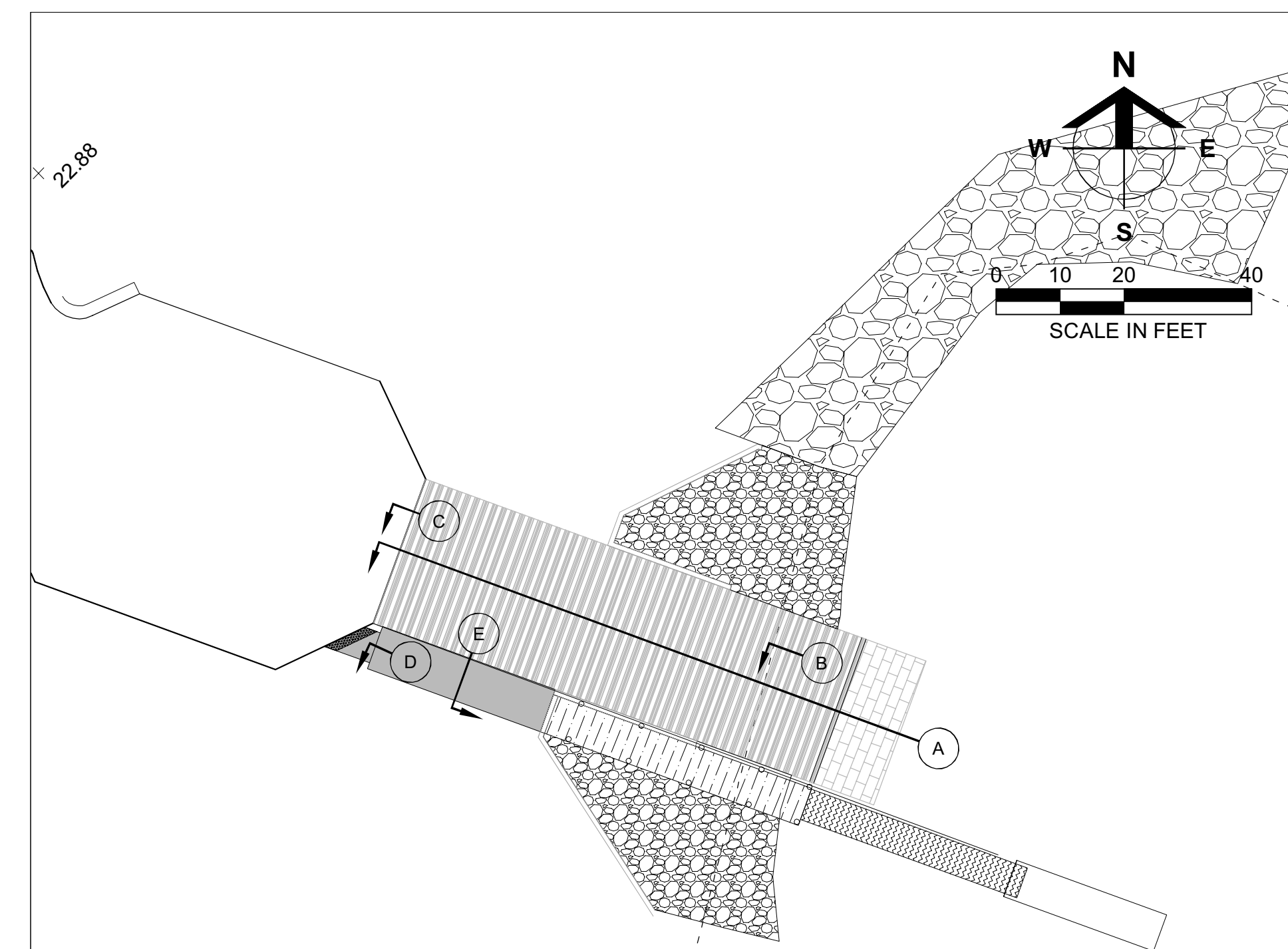
SEALANT DETAIL
N.T.S.



PARTIAL DOCK FRAMING PLAN
N.T.S.



E SECTION
N.T.S.



APPROVED
DOS2018-00007 A04 AMENDMENT #4
Ohdet Kleinmann, Plan Reviewer
Lee County Development Services
6/16/2022

Barraco
and Associates, Inc.
CIVIL ENGINEERING - LAND SURVEYING
LAND PLANNING
www.barraco.net
2271 MCGREGOR BLVD., SUITE 100
POST OFFICE DRAWER 2800
FORT MYERS, FLORIDA 33902-2800
PHONE (239) 461-3170
FAX (239) 461-3169
FLORIDA CERTIFICATES OF AUTHORIZATION
ENGINEERING 7995 - SURVEYING LB-6940

PREPARED FOR
Pulte
HOMES
PULTE HOME CORPORATION
24311 WALDEN CENTER DRIVE
SUITE 300
BONITA SPRINGS, FLORIDA 34134
PHONE (239) 498-7711
FAX (239) 498-7707
WWW.PULTEHOMES.COM

PROJECT DESCRIPTION
WILDBLUE SOUTHWEST
LEE COUNTY, FLORIDA

ENGINEER OF RECORD
CARL A. BARRACO, P.E., FOR THE FIRM
FLORIDA P.E. NO. 38536 - CARLB@BARRACO.NET

DRAWING NOT VALID WITHOUT SEAL, SIGNATURE AND DATE
© COPYRIGHT 2022, BARRACO AND ASSOCIATES, INC.
REPRODUCTION, CHANGES OR ASSIGNMENTS ARE PROHIBITED

FILE NAME J:\23526\DWG\DO SPINE ROAD\BOAT RAMP.DWG
LOCATION J:\23526\DWG\DO SPINE ROAD\BOAT RAMP.DWG
PLOT DATE FRI, 5-6-2022 - 11:44 AM
PLOT BY GUY SAPEN JR

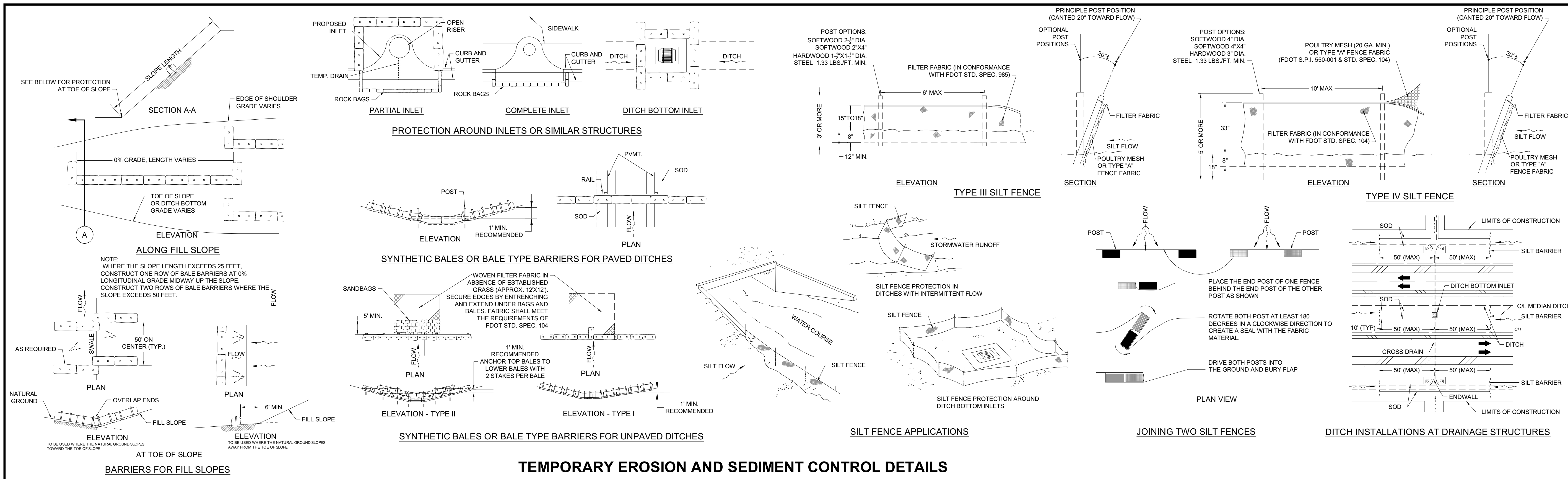
CROSS REFERENCED DRAWINGS
BASEPLAN = 23534B00.DWG

PLAN REVISIONS
2022-04-28 DO AMENDMENT #4

PLAN STATUS
DO AMENDMENT # 4
2022-05-06

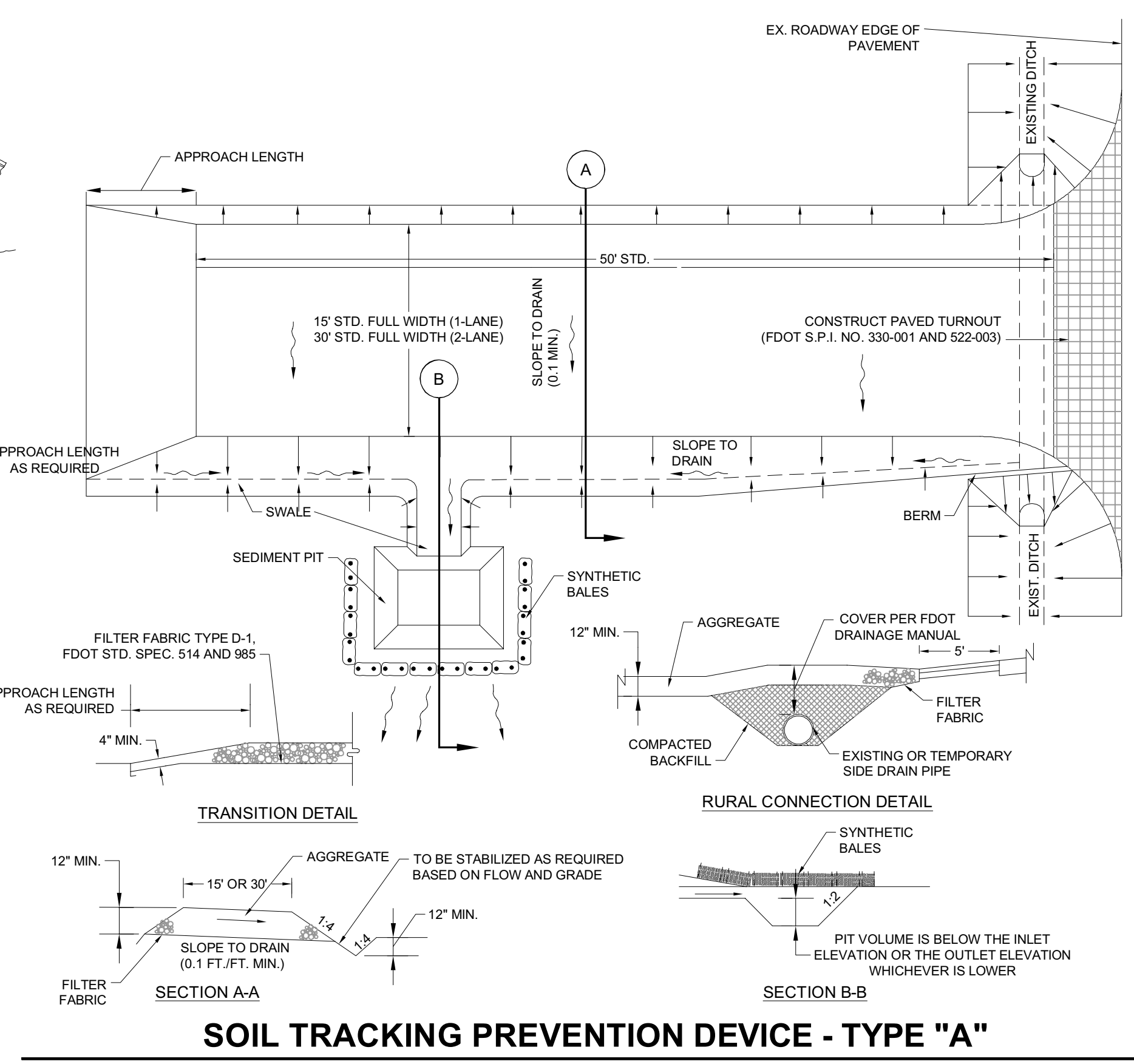
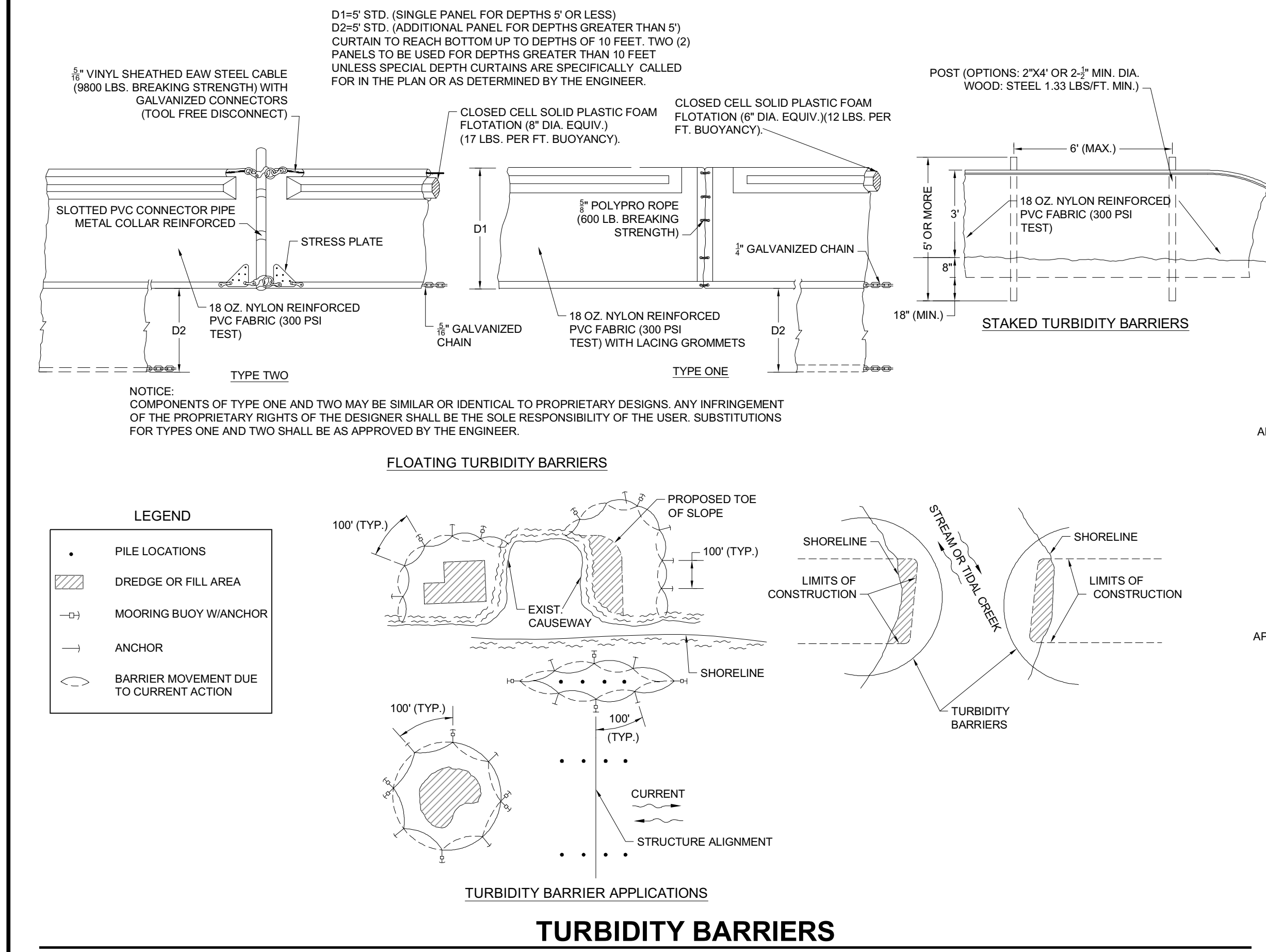
BOAT RAMP CONSTRUCTION DETAILS

PROJECT / FILE NO. **23534**
SHEET NUMBER **8.0**



NOTE: NOT ALL NOTES, DETAILS, SYMBOLS OR OTHER STANDARDS SHOWN ON THIS SHEET MAY BE APPLICABLE TO THIS PROJECT

APPROVED
DOS2018-00007 A04 AMENDMENT #4
Ohdet Kleinmann, Plan Reviewer
Lee County Development Services
6/16/2022



EROSION CONTROL NOTES:

1. PRIOR TO COMMENCEMENT OF CONSTRUCTION ACTIVITY APPROPRIATE EROSION CONTROL DEVICES SHALL BE INSTALLED TO CONTROL AND REDUCE SOIL EROSION AND SEDIMENT TRANSPORT TO OFF-SITE AREAS. THE CONTRACTOR SHALL MAINTAIN THESE DEVICES THROUGHOUT THE DURATION OF CONSTRUCTION. ALL DEVICES SHALL REMAIN IN PLACE UNTIL PERMANENT EROSION CONTROL IS ESTABLISHED.
2. THE CONTRACTOR SHALL SUPPLEMENT THIS PLAN AS REQUIRED TO CONTROL AND REDUCE SOIL EROSION BASED ON THE CONTRACTOR'S MEANS, METHODS AND TECHNIQUE OF CONSTRUCTION. IT IS RECOMMENDED THAT THE CONTRACTOR COMPLY WITH THE LATEST EDITIONS OF THE F.D.O.T. STANDARD PLAN INDEX 570-001 (PREVENTION, CONTROL AND ABATEMENT OF EROSION AND WATER POLLUTION) AND THE STATE OF FLORIDA EROSION AND SEDIMENT CONTROL DESIGNER AND REVIEWER MANUAL (THE E&S MANUAL).
3. THE DETAILS ON THIS SHEET REPRESENT TYPICAL BEST MANAGEMENT PRACTICES FOR SOIL EROSION CONTROL. THEY MAY NOT SATISFY ALL REQUIREMENTS FOR COMPLIANCE WITH REGULATORY AGENCIES AND / OR SPECIFIC PERMIT CONDITIONS AND ALL MAY NOT APPLY TO THIS PROJECT.
4. THE CONTRACTOR AND/OR OWNER SHALL VERIFY THAT THE RESPONSIBLE ENTITY HAS OBTAINED A NATIONAL POLLUTANT DISCHARGE ELIMINATION SYSTEM (N.P.D.E.S.) GENERAL PERMIT FROM THE UNITED STATES ENVIRONMENTAL PROTECTION AGENCY (E.P.A.) / F.D.E.P. AND LOCAL REGULATORY AGENCY AT LEAST 48 HOURS PRIOR TO THE START OF CONSTRUCTION. CONTRACTOR SHALL CREATE, IMPLEMENT AND MAINTAIN A STORMWATER POLLUTION PREVENTION PLAN AS REQUIRED BY THE N.P.D.E.S. GENERAL PERMIT.
5. AREAS LOCATED ADJACENT TO WETLAND / UPLAND PRESERVE AREAS SHALL BE STABILIZED WITH SOD (OR AS CALLED FOR ON DETAILED PLANS) IMMEDIATELY UPON ACHIEVING FINAL GRADE.
6. EROSION CONTROL DEVICES WILL BE INSTALLED ALONG THE BOUNDARY OF THE CONSERVATION AREAS, PRESERVES AND/OR WETLAND AREAS PRIOR TO CONSTRUCTION. THESE DEVICES SHALL BE SILT SCREENS AND, IF NECESSARY, SYNTHETIC BALES. THESE DEVICES SHALL REMAIN IN PLACE UNTIL CONSTRUCTION IS COMPLETED AND THE ADJACENT CONSTRUCTION ZONES ARE ESTABLISHED.
7. CONTRACTOR SHALL REMOVE ALL TEMPORARY EROSION CONTROL METHODS UPON COMPLETION OF SOIL STABILIZATION FOR THE PROJECT. AT THAT TIME THE RESPONSIBLE ENTITY SHALL FILE AN N.P.D.E.S. STORMWATER POLLUTION PREVENTION PLAN NOTICE OF TERMINATION WITH THE F.D.E.P.
8. DURING CONSTRUCTION, INLET OPENINGS, WHERE APPROPRIATE, SHALL BE COVERED WITH FILTER FABRIC (MIRAFI 140N OR APPROVED EQUAL) TO PREVENT DEBRIS FROM FALLING INTO THE INLET.
9. CONTRACTOR SHALL UTILIZE APPROPRIATE METHODS TO CONTROL WIND EROSION AND DUST. ALL AREAS SHALL BE STABILIZED AS NECESSARY TO CONTROL EROSION WITHIN 7 DAYS OF FINAL GRADING.
10. FOR ADDITIONAL EROSION CONTROL DETAILS NOT SHOWN ON THIS PLAN, SEE LATEST EDITION OF THE STATE OF FLORIDA EROSION AND SEDIMENT CONTROL DESIGNER AND REVIEWER MANUAL.

CONTRACTOR RESPONSIBILITIES:

1. PREPARE AND SIGN A NOTICE OF INTENT FORM (N.O.I.) AND SUBMIT TO THE REGULATORY AGENCY ALONG WITH ANY REQUIRED FEES AND ATTACHMENTS, OR ASSURE THAT AN N.O.I. HAS BEEN FILED AS REQUIRED.
2. IMPLEMENT THE STABILIZATION, EROSION CONTROL AND OTHER REQUIREMENTS OF THE S.W.P.P.P. / EROSION, SEDIMENTATION AND POLLUTION CONTROL PLAN.
3. PROVIDE QUALIFIED INSPECTORS, AND DOCUMENTATION OF QUALIFICATIONS, FOR THE CONTROLS IMPLEMENTED AT THE JOB SITE.
4. CONDUCT ALL NECESSARY INSPECTIONS AT THE REQUIRED INTERVALS AND PREPARE AND RETAIN WRITTEN DOCUMENTATION OF THOSE INSPECTIONS AND ALL OTHER WRITTEN DOCUMENTATION REQUIRED BY THE GENERAL PERMIT.
5. KEEP A COPY OF THE S.W.P.P.P. / EROSION, SEDIMENTATION AND POLLUTION CONTROL PLAN, ALL N.O.I.'S, PERMIT CERTIFICATES, PERMIT LANGUAGE, SPILL PREVENTION, COUNTERMEASURES, AND CLEANUP (S.P.C.C.) PLAN, INSPECTION RECORDS, AND OTHER REQUIRED RECORDS ON THE JOB SITE AND POST IN A PROMINENT PLACE NEAR THE JOB SITE ENTRANCE THOSE DOCUMENTS REQUIRED TO BE POSTED UNDER THE TERMS OF THE GENERAL PERMIT.
6. CONTRACTOR SHALL PROVIDE MONTHLY TRAINING SESSIONS FOR ALL ENTITIES AND SUBCONTRACTORS INVOLVED WITH INSTALLING, APPLYING, PERFORMING, MAINTAINING AND INSPECTION OF THE S.W.P.P.P. / EROSION, SEDIMENTATION AND POLLUTION CONTROL PLAN.
7. UPDATE AND MAKE CHANGES TO THE S.W.P.P.P. / EROSION, SEDIMENTATION AND POLLUTION CONTROL PLAN AND SUPPORTING DOCUMENTS (SUCH AS THE S.M.P.S. AND / OR S.P.C.C.) AS NEEDED AND WITH THE APPROVAL OF THE OPERATOR AND THE OPERATOR'S ENGINEER.
8. PREPARE AND SIGN A NOTICE OF TERMINATION (N.O.T.) FORM WHEN SITE WORK CONSTRUCTION IS COMPLETED AND STABILIZATION IS ACHIEVED. TRANSFER THE S.W.P.P.P. / EROSION, SEDIMENTATION AND POLLUTION CONTROL PLAN DOCUMENTS, ALONG WITH ALL N.O.I.'S, PERMIT CERTIFICATES, N.O.T.'S, AND WRITTEN RECORDS REQUIRED BY THE GENERAL PERMIT TO THE OPERATOR FOR ARCHIVING IN BOTH PAPER AND OPTICALLY-SCANNED FORMAT ON A CD.

Barraco
and Associates, Inc.
CIVIL ENGINEERING - LAND SURVEYING
LAND PLANNING
www.barraco.net
2271 MCGREGOR BLVD., SUITE 100
FORT MYERS, FLORIDA 33902-2800
PHONE (239) 461-3170
FAX (239) 461-3169
FLORIDA CERTIFICATES OF AUTHORIZATION
ENGINEERING 7995 - SURVEYING LB-6940

PREPARED FOR

PULTE HOME CORPORATION
24311 WALDEN CENTER DRIVE
SUITE 300
BONITA SPRINGS, FLORIDA 34134
PHONE (239) 498-7711
FAX (239) 498-7705
WWW.PULTEHOMES.COM

PROJECT DESCRIPTION

**WILDBLUE
SOUTHWEST**

LEE COUNTY, FLORIDA

ENGINEER OF RECORD
CARL A. BARRACO, P.E. - FOR THE FIRM
FLORIDA P.E. NO. 38536 - CARLB@BARRACO.NET

DRAWING NOT VALID WITHOUT SEAL, SIGNATURE AND DATE
(C) COPYRIGHT 2022, BARRACO AND ASSOCIATES, INC.
REPRODUCTION, CHANGES OR ASSIGNMENTS ARE PROHIBITED

FILE NAME J:\23526\DWGDO SPINE ROAD\BOAT RAMP\23526A50.DWG

LOCATION J:\23526\DWGDO SPINE ROAD\BOAT RAMP\23526A50.DWG

PLOT DATE FRI, 5-6-2022 - 11:45 AM

PLOT BY GUY SAPEN JR

CROSS REFERENCED DRAWINGS
MASTER = BA1-EROSION-1-3D.DWG

PLAN REVISIONS

PLAN STATUS

DO AMENDMENT # 4
2022-05-06

EROSION
CONTROL
DETAILS

PROJECT / FILE NO. 23526

SHEET NUMBER 9.0



APPROVED
DOS2018-00007 A04 AMENDMENT #4
Ohdet Kleinmann, Plan Reviewer
Lee County Development Services
6/16/2022

Barraco
and Associates, Inc.
CIVIL ENGINEERING - LAND SURVEYING
LAND PLANNING
www.barraco.net
2271 MCGREGOR BLVD., SUITE 100
POST OFFICE DRAWER 2800
FORT MYERS, FLORIDA 33902-2800
PHONE (239) 461-3170
FAX (239) 461-3169
FLORIDA CERTIFICATES OF AUTHORIZATION
ENGINEERING 7995 - SURVEYING LB-6940

PREPARED FOR

PULTE HOME CORPORATION
24311 WALDEN CENTER DRIVE
SUITE 300
BONITA SPRINGS, FLORIDA 34134
PHONE (239) 498-7711
FAX (239) 498-7707
WWW.PULTEHOMES.COM

PROJECT DESCRIPTION

**WILDBLUE
SOUTHWEST**

LEE COUNTY, FLORIDA

ENGINEER OF RECORD
CARL A. BARRACO, P.E., FOR THE FIRM
FLORIDA P.E. NO. 38536 - CARLB@BARRACO.NET

DRAWING NOT VALID WITHOUT SEAL, SIGNATURE AND DATE
© COPYRIGHT 2022, BARRACO AND ASSOCIATES, INC.
REPRODUCTION, CHANGES OR ASSIGNMENTS ARE PROHIBITED

FILE NAME | 23526A52.DWG

LOCATION | J:\23526\DWG\DO SPINE ROAD\BOAT RAMP

PLOT DATE | FRI, 5-6-2022 - 11:46 AM

PLOT BY | GUY SAPEN JR

CROSS REFERENCED DRAWINGS

PLAN REVISIONS

	DO AMENDMENT #4	
2022-04-28		△

PLAN STATUS

DO AMENDMENT # 4
2022-05-06

**STORMWATER
POLLUTION
PREVENTION PLAN**

PROJECT / FILE NO.	SHEET NUMBER
23526	10.0