



Barraco
and Associates, Inc.
CIVIL ENGINEERING - LAND SURVEYING
LAND PLANNING
www.barraco.net
2271 MCGREGOR BLVD., SUITE 100
POST OFFICE DRAWER 2800
FORT MYERS, FLORIDA 33902-2800
PHONE (239) 461-3170
FAX (239) 461-3169
FLORIDA CERTIFICATES OF AUTHORIZATION
ENGINEERING 7995 - SURVEYING LB-6940

PREPARED FOR

WILDBLUE
COMMUNITY
DEVELOPMENT
DISTRICT

PROJECT DESCRIPTION

WILDBLUE
CDD

LEE COUNTY, FLORIDA

THIS PLAN IS PRELIMINARY AND
INTENDED FOR CONCEPTUAL
PLANNING PURPOSES ONLY.

SITE LAYOUT AND LAND USE
INTENSITIES OR DENSITIES MAY
CHANGE SIGNIFICANTLY BASED
UPON SURVEY, ENGINEERING,
ENVIRONMENTAL AND / OR
REGULATORY CONSTRAINTS
AND / OR OPPORTUNITIES.

DRAWING NOT VALID WITHOUT SEAL, SIGNATURE AND DATE
© COPYRIGHT 2021, BARRACO AND ASSOCIATES, INC.
REPRODUCTION, CHANGES OR ASSIGNMENTS ARE PROHIBITED

FILE NAME J:\23620_WBCDD_MAINTENANCE_200SCAL (AEF)

LOCATION J:\23620\EXHIBITS\

PLOT DATE THU, 10-21-2021 - 3:25 PM

PLOT BY JOHN HAHN

CROSS REFERENCED DRAWINGS

PLAN REVISIONS

PLAN STATUS

CDD EXHIBIT

**WILDBLUE CDD
MAINTENANCE
MAP**

PROJECT / FILE NO. **23620**

SHEET NUMBER **O-KEY**



Barraco
and Associates, Inc.
CIVIL ENGINEERING - LAND SURVEYING
LAND PLANNING

www.barraco.net
2271 MCGREGOR BLVD., SUITE 100
POST OFFICE DRAWER 2800
FORT MYERS, FLORIDA 33902-2800
PHONE (239) 461-3170
FAX (239) 461-3169
FLORIDA CERTIFICATES OF AUTHORIZATION
ENGINEERING 7995 - SURVEYING LB-6940

PREPARED FOR

WILDBLUE
COMMUNITY
DEVELOPMENT
DISTRICT

PROJECT DESCRIPTION

WILDBLUE
CDD

LEE COUNTY, FLORIDA

THIS PLAN IS PRELIMINARY AND
INTENDED FOR CONCEPTUAL
PLANNING PURPOSES ONLY.

SITE LAYOUT AND LAND USE
INTENSITIES OR DENSITIES MAY
CHANGE SIGNIFICANTLY BASED
UPON SURVEY, ENGINEERING,
ENVIRONMENTAL AND / OR
REGULATORY CONSTRAINTS
AND / OR OPPORTUNITIES.

DRAWING NOT VALID WITHOUT SEAL, SIGNATURE AND DATE
© COPYRIGHT 2021, BARRACO AND ASSOCIATES, INC.
REPRODUCTION, CHANGES OR ASSIGNMENTS ARE PROHIBITED

FILE NAME | 23620_WBCDD_MAINTENANCE_200SCAL | (AEF)
LOCATION | J:\23620\EXHIBITS\
PLOT DATE | THU, 10-21-2021 - 3:26 PM
PLOT BY | JOHN HAHN

CROSS REFERENCED DRAWINGS	
PLAN REVISIONS	

PLAN STATUS

CDD EXHIBIT

**WILDBLUE CDD
MAINTENANCE
MAP**

PROJECT / FILE NO.	SHEET NUMBER
23620	O-1



Barraco
and Associates, Inc.
CIVIL ENGINEERING - LAND SURVEYING
LAND PLANNING
www.barraco.net
2271 MCGREGOR BLVD., SUITE 100
POST OFFICE DRAWER 2800
FORT MYERS, FLORIDA 33902-2800
PHONE (239) 461-3170
FAX (239) 461-3169
FLORIDA CERTIFICATES OF AUTHORIZATION
ENGINEERING 7995 - SURVEYING LB-6940

PREPARED FOR

**WILDBLUE
COMMUNITY
DEVELOPMENT
DISTRICT**

PROJECT DESCRIPTION

**WILDBLUE
CDD**

LEE COUNTY, FLORIDA

THIS PLAN IS PRELIMINARY AND
INTENDED FOR CONCEPTUAL
PLANNING PURPOSES ONLY.

SITE LAYOUT AND LAND USE
INTENSITIES OR DENSITIES MAY
CHANGE SIGNIFICANTLY BASED
UPON SURVEY, ENGINEERING,
ENVIRONMENTAL AND / OR
REGULATORY CONSTRAINTS
AND / OR OPPORTUNITIES.

DRAWING NOT VALID WITHOUT SEAL, SIGNATURE AND DATE
© COPYRIGHT 2021, BARRACO AND ASSOCIATES, INC.
REPRODUCTION, CHANGES OR ASSIGNMENTS ARE PROHIBITED

FILE NAME | 23620_WBCDD_MAINTENANCE_200SCAL (AEF)

LOCATION | J:\23620\EXHIBITS\

PLOT DATE | THU, 10-21-2021 - 3:27 PM

PLOT BY | JOHN HAHN

CROSS REFERENCED DRAWINGS

PLAN REVISIONS

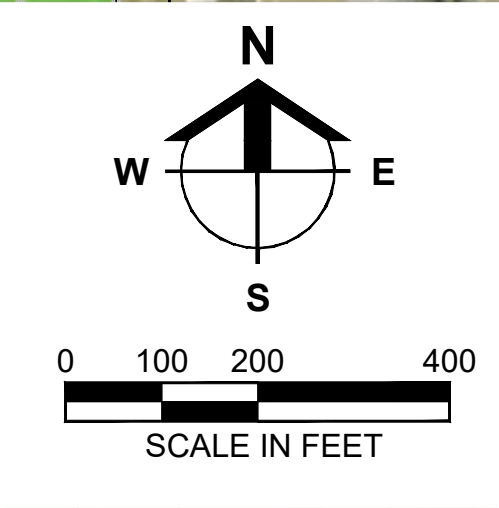
PLAN STATUS

CDD EXHIBIT

**WILDBLUE CDD
MAINTENANCE
MAP**

PROJECT / FILE NO. | **23620**

SHEET NUMBER | **O-2**



WILDBLUE
PROPERTY
BOUNDARY

CDD BOUNDARY

LEGEND

	CDD MAINTENANCE
	MASTER HOA MAINTENANCE
	HOA MAINTENANCE PLAN BY AGREEMENT WITH CDD OWNERSHIP
	EXISTING LAKE
	PROPOSED LAKE
	PRESERVE AREA

Barraco
and Associates, Inc.
CIVIL ENGINEERING - LAND SURVEYING
LAND PLANNING
www.barraco.net
2271 MCGREGOR BLVD., SUITE 100
POST OFFICE DRAWER 2800
FORT MYERS, FLORIDA 33902-2800
PHONE (239) 461-3170
FAX (239) 461-3169
FLORIDA CERTIFICATES OF AUTHORIZATION
ENGINEERING 7995 - SURVEYING LB-6940

PREPARED FOR	
WILDBLUE [®] COMMUNITY [®] DEVELOPMENT [®] DISTRICT [®]	
PROJECT DESCRIPTION	
WILDBLUE [®] CDD [®]	
LEE COUNTY, FLORIDA	
THIS PLAN IS PRELIMINARY AND INTENDED FOR CONCEPTUAL PLANNING PURPOSES ONLY. SITE LAYOUT AND LAND USE INTENSITIES OR DENSITIES MAY CHANGE SIGNIFICANTLY BASED UPON SURVEY, ENGINEERING, ENVIRONMENTAL AND / OR REGULATORY CONSTRAINTS AND / OR OPPORTUNITIES.	
DRAWING NOT VALID WITHOUT SEAL, SIGNATURE AND DATE © COPYRIGHT 2021, BARRACO AND ASSOCIATES, INC. REPRODUCTION, CHANGES OR ASSIGNMENTS ARE PROHIBITED	
FILE NAME	J:\23620_WBCDD_MAINTENANCE_200SCAL (AEF)
LOCATION	J:\23620\EXHIBITS\
PLOT DATE	THU, 10-21-2021 - 3:27 PM
PLOT BY	JOHN HAHN
CROSS REFERENCED DRAWINGS	
PLAN REVISIONS	
PLAN STATUS	
CDD EXHIBIT	
WILDBLUE CDD MAINTENANCE MAP	
PROJECT / FILE NO.	SHEET NUMBER
23620	O-3



LEGEND

	CDD MAINTENANCE
	MASTER HOA MAINTENANCE
	HOA MAINTENANCE PLAN BY AGREEMENT WITH CDD OWNERSHIP
	EXISTING LAKE
	PROPOSED LAKE
	PRESERVE AREA

Barraco
and Associates, Inc.
CIVIL ENGINEERING - LAND SURVEYING
LAND PLANNING
www.barraco.net
2271 MCGREGOR BLVD., SUITE 100
POST OFFICE DRAWER 2800
FORT MYERS, FLORIDA 33902-2800
PHONE (239) 461-3170
FAX (239) 461-3169
FLORIDA CERTIFICATES OF AUTHORIZATION
ENGINEERING 7995 - SURVEYING LB-6940

PREPARED FOR

WILDBLUE
COMMUNITY
DEVELOPMENT
DISTRICT

PROJECT DESCRIPTION

WILDBLUE
CDD

LEE COUNTY, FLORIDA

THIS PLAN IS PRELIMINARY AND
INTENDED FOR CONCEPTUAL
PLANNING PURPOSES ONLY.

SITE LAYOUT AND LAND USE
INTENSITIES OR DENSITIES MAY
CHANGE SIGNIFICANTLY BASED
UPON SURVEY, ENGINEERING,
ENVIRONMENTAL AND / OR
REGULATORY CONSTRAINTS
AND / OR OPPORTUNITIES.

DRAWING NOT VALID WITHOUT SEAL, SIGNATURE AND DATE
© COPYRIGHT 2021, BARRACO AND ASSOCIATES, INC.
REPRODUCTION, CHANGES OR ASSIGNMENTS ARE PROHIBITED

FILE NAME | 23620_WBCDD_MAINTENANCE_200SCAL | (AEF)

LOCATION | J:\23620\EXHIBITS\

PLOT DATE | THU, 10-21-2021 - 3:28 PM

PLOT BY | JOHN HAHN

CROSS REFERENCED DRAWINGS

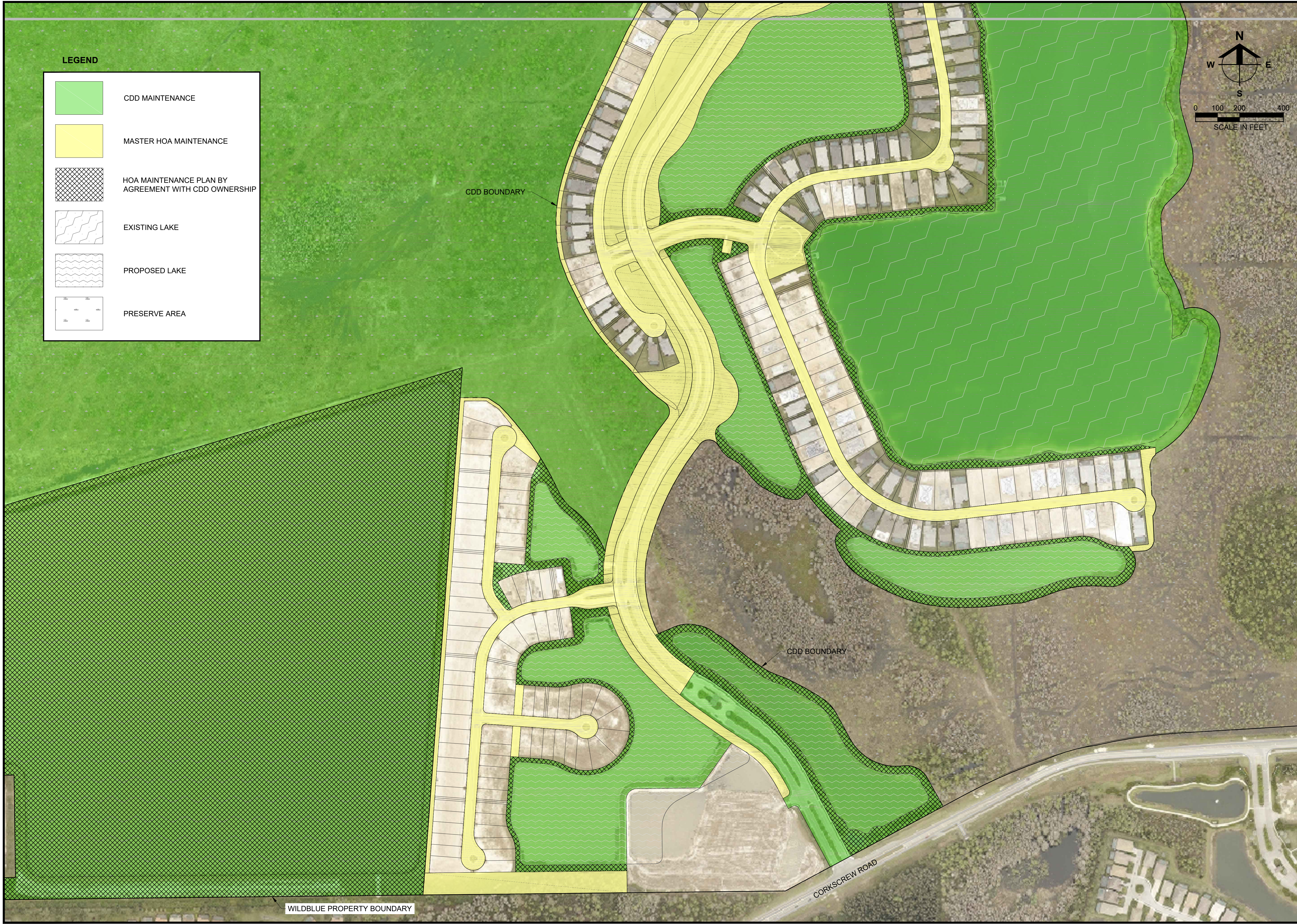
PLAN REVISIONS

PLAN STATUS

CDD EXHIBIT

**WILDBLUE CDD
MAINTENANCE
MAP**

PROJECT / FILE NO.	SHEET NUMBER
23620	O-4



LEGEND

	CDD MAINTENANCE
	MASTER HOA MAINTENANCE
	HOA MAINTENANCE PLAN BY AGREEMENT WITH CDD OWNERSHIP
	EXISTING LAKE
	PROPOSED LAKE
	PRESERVE AREA

N
W E
S
0 100 200 400
SCALE IN FEET

Barraco
and Associates, Inc.
CIVIL ENGINEERING - LAND SURVEYING
LAND PLANNING
www.barraco.net
2271 MCGREGOR BLVD., SUITE 100
POST OFFICE DRAWER 2800
FORT MYERS, FLORIDA 33902-2800
PHONE (239) 461-3170
FAX (239) 461-3169
FLORIDA CERTIFICATES OF AUTHORIZATION
ENGINEERING 7995 - SURVEYING LB-6940

PREPARED FOR

WILDBLUE[®]
COMMUNITY[®]
DEVELOPMENT[®]
DISTRICT[®]

PROJECT DESCRIPTION

WILDBLUE[®]
CDD[®]

LEE COUNTY, FLORIDA

THIS PLAN IS PRELIMINARY AND
INTENDED FOR CONCEPTUAL
PLANNING PURPOSES ONLY.

SITE LAYOUT AND LAND USE
INTENSITIES OR DENSITIES MAY
CHANGE SIGNIFICANTLY BASED
UPON SURVEY, ENGINEERING,
ENVIRONMENTAL AND / OR
REGULATORY CONSTRAINTS
AND / OR OPPORTUNITIES.

DRAWING NOT VALID WITHOUT SEAL, SIGNATURE AND DATE
© COPYRIGHT 2021, BARRACO AND ASSOCIATES, INC.
REPRODUCTION, CHANGES OR ASSIGNMENTS ARE PROHIBITED

FILE NAME | 23620_WBCDD_MAINTENANCE_200SCALE | (AEF)

LOCATION | J:\23620\EXHIBITS\

PLOT DATE | THU, 10-21-2021 - 3:29 PM

PLOT BY | JOHN HAHN

CROSS REFERENCED DRAWINGS

PLAN REVISIONS

PLAN STATUS

CDD EXHIBIT

WILDBLUE CDD
MAINTENANCE
MAP

PROJECT / FILE NO. | SHEET NUMBER

23620 | **O-5**