



Andrea Douglas, RLA  
This item has been electronically signed and sealed by Andrea Douglas, RLA, using a SHA-1 authentication code. Printed copies of this document are not considered signed and sealed and the SHA-1 authentication code must be verified on any electronic copies.  
2019.06.17 15:24:25 -04'00'

# WILD BLUE PHASE 1

## DEVELOPMENT ORDER PLANS

ESTERO, FLORIDA

### TABLE OF CONTENTS

SHEET	DESCRIPTION
CM	KEY SHEET
CM1	CODE MINIMUM LANDSCAPE PLAN
CM2	CODE MINIMUM LANDSCAPE PLAN
CM3	CODE MINIMUM LANDSCAPE PLAN
CM4	CODE MINIMUM LANDSCAPE PLAN
CM5	CODE MINIMUM LANDSCAPE PLAN
CM6	CODE MINIMUM LANDSCAPE PLAN
CM7	CODE MINIMUM LANDSCAPE PLAN
CM8	CODE MINIMUM LANDSCAPE PLAN
CM9	CODE MINIMUM LANDSCAPE PLAN
CM10	CODE MINIMUM LANDSCAPE PLAN
CM11	CODE MINIMUM NOTES AND CALCULATIONS

Minor Change #1

APPROVED  
DOS2017-00103  
Tom Sawtell, Plan Reviewer  
Lee County Development Services  
7/19/2019

08-26-2018 County comments 01-16-2019 Rev. per Civil Changes: parking, seawall, lift station 02-08-2019 Rev. ADD plant list 04-17-2019 Rev. Civil Base Change 05-21-2019 Lake F-1 Removed from Deep Lake Req. 06-17-19 Phase line adjustment 1A/E per Civil

COVER

DO LANDSCAPE SET

Date: 11-13-17  
Drawn By: BSH

This plan and design are the property of Outside Productions, Inc. Plans shall not be copied or reproduced without permission of Outside Productions, Inc.

JOB Number: 09717

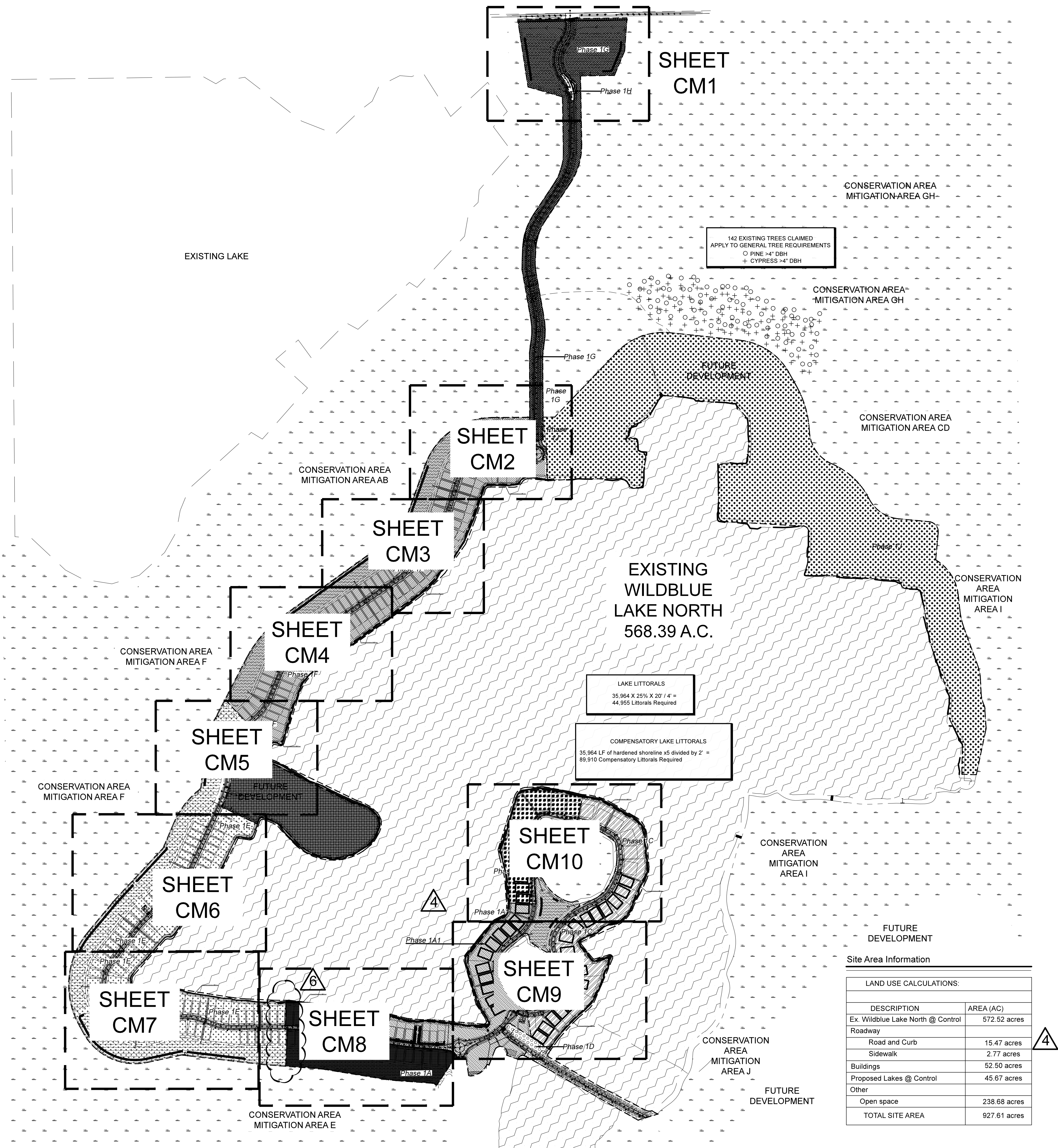
OUTSIDE PRODUCTIONS International  
THE ART & SCIENCE OF OUTDOOR LIVING  
3841 TAVILLA CIRCLE SUITE 200  
DADE CITY, FLORIDA 34608  
www.opi.com

W. Patrick Tetz, ASLA  
Landscape Architect #461

WILD BLUE - PHASE 1 RESIDENTIAL

PREPARED FOR: ALICO EAST FUND, LLC  
ESTERO, LEE COUNTY, FLORIDA





Code Minimum Plant List						
VEHICLE USE AREA TREES						
Qty.	Symbol	Botanical Name	Common Name	Specification	Spacing	Native
5	IT	Please choose Parking Trees from the following:				
		Magnolia grandiflora 'Bracken's Brown Beauty'	Bracken's Brown Beauty Magnolia Tree	10' ht x 4" spr, 2" cal	as shown	Y
		Quercus virginiana	Live Oak Tree	10' ht x 4" spr, 2" cal	as shown	Y
		Swietenia mahogany	Mahogany Tree	10' ht x 4" spr, 2" cal	as shown	Y
		Pinus elliotti 'Densa'	South Florida Slash Pine Tree	10' ht x 4" spr, 2" cal	as shown	Y
		Sabal palmetto	Cabbage Palm	10' ct min, stagger hts., cut head slick	as shown	Y
* See LDC notes below regarding the use of Sabal Palms/Cabbage Palms						
VEHICULAR USE SHRUBS						
Qty.	Symbol	Botanical Name	Common Name	Specification	Spacing	Native
123	IS	Please choose Building Perimeter Shrubs from the following:				
		Hamelia patens	Firebush	3 gallon, 24" ht	30" center	Y
		Conocarpus erectus sericeus	Silver Buttonwood	3 gallon, 24" ht	30" center	Y
		Viburnum obovatum	Walters Viburnum	3 gallon, 24" ht	30" center	Y
		Myricanthes fragrans	Simpson's Stopper	3 gallon, 24" ht	30" center	Y
BUFFER TREES						
Qty.	Symbol	Botanical Name	Common Name	Specification	Spacing	Native
53	BT	Please choose Type D Buffer Trees from the following:				
		Bucida buceras 'Shady Lady'	Shady Lady Black Olive Tree	10' ht x 4" spr, 2" cal, 25g	as shown	Y
		Quercus virginiana	Live Oak Tree	10' ht x 4" spr, 2" cal	as shown	Y
		Swietenia mahogany	Mahogany Tree	10' ht x 4" spr, 2" cal	as shown	Y
		Pinus elliotti 'Densa'	South Florida Slash Pine Tree	10' ht x 4" spr, 2" cal	as shown	Y
		Sabal palmetto	Cabbage Palm	10' ct, cut head slick	as shown	Y
BUFFER SHRUBS						
Qty.	Symbol	Botanical Name	Common Name	Specification	Spacing	Native
647	BS	Please choose Screening Shrubs from the following:				
		Conocarpus erectus sericeus	Silver Buttonwood	3 gallon, 36" oa ht	36" center	Y
		Myricanthes fragrans	Simpson's Stopper	3 gallon, 36" oa ht	36" center	Y
		Viburnum obovatum	Walters Viburnum	3 gallon, 36" oa ht	36" center	Y
202	BS1	Please choose Screening Shrubs from the following:				
		Conocarpus erectus sericeus	Silver Buttonwood	10 gallon, 48" oa ht	48" center	Y
		Myricanthes fragrans	Simpson's Stopper	10 gallon, 48" oa ht	48" center	Y
		Viburnum obovatum	Walters Viburnum	10 gallon, 48" oa ht	48" center	Y
LITTORAL TREES						
Qty.	Symbol	Botanical Name	Common Name	Specification	Spacing	Native
212	LT	Acer Rubrum	Red Maple	10' ht x 4" spr, 2" cal	as shown	Y
		Ilex Cassia	Dalton Holly	10' ht x 4" spr, 2" cal	as shown	Y
		Liquidambar styraciflua	Sweetgum	10' ht x 4" spr, 2" cal	as shown	Y
		Magnolia virginiana	Sweet Bay Magnolia	10' ht x 4" spr, 2" cal	as shown	Y
		Persea palustris	Swamp Bay	10' ht x 4" spr, 2" cal	as shown	Y
		Pinus elliotti 'densa'	South Florida Slash Pine	10' ht x 4" spr, 2" cal	as shown	Y
		Quercus laurifolia	Laural Oak	10' ht x 4" spr, 2" cal	as shown	Y
		Quercus virginiana	Live Oak	10' ht x 4" spr, 2" cal	as shown	Y
		Taxodium distichum	Bald Cypress	10' ht x 4" spr, 2" cal	as shown	Y
LITTORAL HERBACEOUS 1						
Qty.	Symbol	Botanical Name	Common Name	Specification	Spacing	Native
113,895	LTTS	SEE ADD PLANT SPECIES LIST BY ZONES, BELOW		2" Liner	12" on center	Y
*Littoral plantings must include a minimum of four different native herbaceous plant species.						
MISCELLANEOUS						
Qty.	Symbol	Botanical Name	Common Name	Specification		Native
9,676	SF	Irrigation	SEE PLANS OR SPECS	To be field verified by contractor.		
9,676	SF	Mulch	CocoBay	2" thick		

\* Sec. 10-416, c. 2, a. Trees must be planted or retained in landscaped areas in parking areas, including landscaped areas reserved for future parking spaces, to provide for canopy coverage when the trees mature. At least one canopy tree or a cluster of three sabal palms must be planted or retained for every 250 square feet of required internal planting area, and no parking space may be more than 200 feet from a tree planted in a permeable island, peninsula or median. Canopy requirements may be met with existing indigenous native trees whenever such trees are located within the parking area

#### LITTORAL PLANTING SPECIES LIST<sup>1</sup>

Common Name	Scientific Name	Minimum Container Size	Planting Density (On Center)
Zone 1 – Herbaceous Plantings			
Blue Maidencane	<i>Amphicarpum muhlenbergianum</i>	BR	2 ft.
Cordgrass	<i>Spartina bakeri</i>	BR	2 ft.
Golden canna	<i>Canna flaccida</i>	BR	2 ft.
Gulfdune Paspalum	<i>Paspalum monostachyum</i>	2 in.	2 ft.
Maidencane	<i>Panicum hemitomon</i>	BR	2 ft.
Muhly grass	<i>Muhlenbergia capillaris</i>	2 in.	2 ft.
Sawgrass	<i>Cladium jamaicense</i>	2 in.	2 ft.
Soft rush	<i>Juncus effusus</i>	BR	2 ft.
Spikerush	<i>Eleocharis spp.</i>	BR	2 ft.
Swamp lily	<i>Crinum americanum</i>	BR	2 ft.
Water hyssop	<i>Bacopa spp.</i>	BR	2 ft.
Zone 2 – Herbaceous Plantings			
Arrowhead	<i>Sagittaria lancifolia</i>	BR	2 ft.
Blue flag iris	<i>Iris virginicus</i>	BR	2 ft.
Bulrush	<i>Scirpus spp.</i>	BR	2 ft.
Cordgrass	<i>Spartina bakeri</i>	BR	2 ft.
Golden canna	<i>Canna flaccida</i>	BR	2 ft.
Maidencane	<i>Panicum hemitomon</i>	BR	2 ft.
Pickrelweed	<i>Pontederia cordata</i>	BR	2 ft.
Sawgrass	<i>Cladium jamaicense</i>	2 in.	2 ft.
Soft rush	<i>Juncus effusus</i>	BR	2 ft.
Spikerush	<i>Eleocharis spp.</i>	BR	2 ft.
Water hyssop	<i>Bacopa spp.</i>	BR	2 ft.
Zone 3 – Herbaceous Plantings			
Arrowhead	<i>Sagittaria lancifolia</i>	BR	2 ft.
Bulrush	<i>Scirpus spp.</i>	BR	2 ft.
Fireflag	<i>Thalia geniculata</i>	BR	2 ft.
Pickrelweed	<i>Pontederia cordata</i>	BR	2 ft.
Soft rush	<i>Juncus effusus</i>	BR	2 ft.
Spikerush	<i>Eleocharis spp.</i>	BR	2 ft.
Zone 4 – Herbaceous Plantings			
Fireflag	<i>Thalia geniculata</i>	BR	2 ft.
Floating-hearts	<i>Nymphoides aquatica</i>	BR	2 ft.
Spatter-Dock	<i>Nyphar luteum</i>	BR	2 ft.
Waterlily	<i>Nymphaea odorata</i>	BR	2 ft.

<sup>1</sup>Littoral plantings must include a minimum of four different native herbaceous plant species. Additional native species may be included in the planting list prior to DO approval.  
BR – bare root

**Minor Change #1**

APPROVED  
DOS2017-00103  
Tom Sawtell, Plan Reviewer  
Lee County Development Services  
7/19/2019

LITTORAL SUMMARY Existing Wild Blue North Lake by Phases								
	PHASE 1A	PHASE 1B	PHASE 1C	PHASE 1D	PHASE 1E	PHASE 1F	PHASE 1I	TOTALS BY PHASE
Shore line length	3,492 LF	1,728 LF	3,599 LF	1,264 LF	3,725 LF	4,070 LF	2,863 LF	20,741 LF
Required Littorals (including Compensatory)	13,135	6,480	13,496	4,740	13,969	15,223	10,736	77,779



