

DEVELOPMENT ORDER MINOR CHANGE #6  
FOR

WILDBLUE  
PHASE 1 RESIDENTIAL

**\*\*FINAL INSPECTION REQUIRED\*\***  
At the completion of the improvements, please submit a Letter of Substantial Compliance to schedule a Final Inspection.

Development Order Approval does not vest nor guarantee that changes will not be required, if subsequent changes are made to the Uniform Lee County Fire Code.

**UTILITY PERMIT REQUIRED**  
Plan is not approved for location or placement of utilities. All work in county right-of-way and easements must be permitted prior to commencing work.

Please Note: Final Development Order does not confer approval for signage

PART OF SECTIONS 7,8,17,18,19,20, TOWNSHIP 46 SOUTH, RANGE 26 EAST  
FORT MYERS, LEE COUNTY, FLORIDA

PROJECT DATA

<b>SITE ADDRESS</b>	<b>PROJECT DATUM</b>	
13500 ALICO ROAD FT. MYERS, FLORIDA 33913	STATE PLANE FLORIDA WEST ZONE NAD 1983 (NSRS2007) NORTH AMERICAN VERTICAL DATUM (NAVD) 1988	
<b>ZONING</b>	<b>RECORD PLAT</b>	
MPD (RESOLUTION Z-15-021)	PLT2017-00019 INSTRUMENT NO.: 2017000216031	
<b>FLOOD ZONE</b>	<b>STRAP NUMBERS</b>	
ACCORDING TO FIRM 12071C0625 EFFECTIVE DATE AUGUST 28, 2008, THE SUBJECT PARCEL IS NOT LOCATED WITHIN A SPECIAL FLOOD HAZARD AREA (PANEL NOT PRINTED)	17-46-26-L1-070F1.0000 17-46-26-L1-070F1.0010	
<b>PERMIT REQUIREMENTS</b>		
<b>AGENCY</b>	<b>STATUS</b>	<b>NOTES</b>
S. FLORIDA WATER MANAGEMENT DISTRICT	APPROVED	36-05075-P
LEE COUNTY DEVELOPMENT ORDER	APPROVED	DOS2017-00103
FLORIDA DEPARTMENT OF HEALTH	PENDING	-
ORIDA DEPT. OF ENVIRONMENTAL PROTECTION	PENDING	-
F.D.O.T. CONNECTION PERMIT	N/A	-
F.D.O.T. DRAINAGE CONNECTION PERMIT	N/A	-
F.D.O.T. UTILITY PERMIT	N/A	-
ARMY CORPS OF ENGINEERS	APPROVED	SAJ-2003-10995
F.D.E.P. NOTICE OF INTENT	PENDING	-

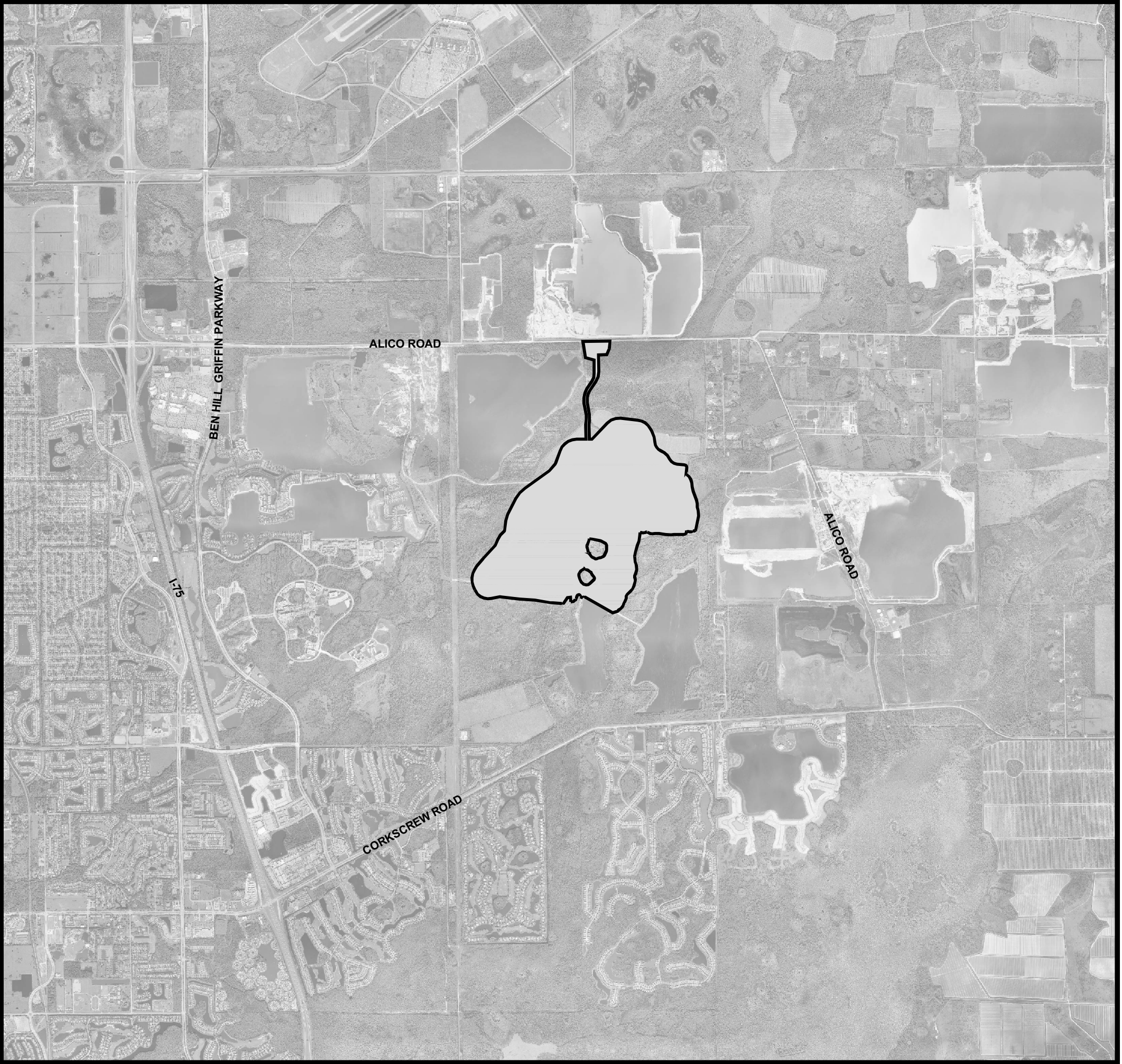
NOTE: CONTRACTOR MUST OBTAIN AND KEEP ON FILE A COPY OF ALL PERMITS  
REQUIRED PRIOR TO COMMENCEMENT OF ANY CONSTRUCTION ACTIVITY

DESIGN TEAM

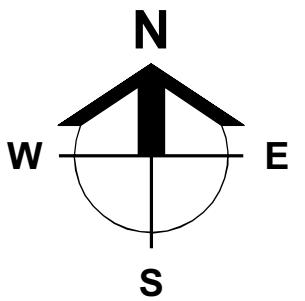
<b>PROJECT ENGINEER</b>	<b>PROJECT MANAGEMENT</b>
TIMOTHY B. GAVIN, P.E.	CHRIS VAN BUSKIRK
<b>DESIGN ENGINEER</b>	<b>PROJECT SURVEYOR</b>
TIMOTHY B. GAVIN, P.E.	SCOTT A. WHEELER, PSM
<b>LEAD DESIGN TECHNICIAN</b>	<b>SITE PLANNING</b>
GUY W. SAPEN	JENNIFER SAPEN, AICP
<b>DESIGN STAFF</b>	<b>LAND PLANNING</b>
SCOTT A. WHEELER, JR.	JENNIFER SAPEN, AICP
<b>QUALITY CONTROL</b>	<b>RECORD DRAWINGS</b>
CHRIS VAN BUSKIRK	

THESE PLANS MAY HAVE BEEN MODIFIED IN SIZE BY REPRODUCTION.  
THIS MUST BE CONSIDERED WHEN OBTAINING SCALED DATA.

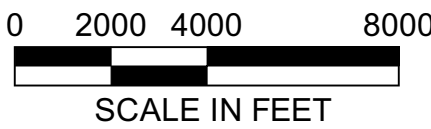
ALL DIMENSIONS ARE IN FEET.



PROJECT  
LOCATION



LOCATION MAP



INDEX OF DRAWINGS

SHEET	DESCRIPTION	XREF	DRAWING NAME
1.0	COVER SHEET AND LOCATION MAP	B	23675A01.DWG
2.0	STANDARD NOTES, LEGEND, AND ABBREVIATIONS	A	23675A02.DWG
3.0	AERIAL PHOTOGRAPH AND EXISTING CONDITIONS PLAN	B,D	23675A06.DWG
4.0	MASTER SITE AND PHASING PLAN	A	23675A10.DWG
4.1	MODEL HOME PARKING PLAN	A	23675A10B.DWG
5.0	MASTER DRAINAGE PLAN	A	23675A11.DWG
6.0	MASTER UTILITY PLAN	A	23675A12.DWG
7.0-7.18	DETAILED PAVING, GRADING, AND DRAINAGE PLANS	A	23675A15.DWG
8.0-8.4	TYPICAL SECTIONS	-	23675A18.DWG
9.0	PLAN AND PROFILE KEY SHEET	-	23675A29.DWG
10.0-10.5	PLAN AND PROFILES - WILDBLUE BLVD. ENTRANCE ROAD (STA. 800)	A,C	23675A30A.DWG
11.0-11.15	PLAN AND PROFILES - WILDBLUE BLVD. (STA. 100-200)	A,C	23675A30B.DWG
12.0-12.6	PLAN AND PROFILES - BLUE EYE LOOP (STA. 200)	A,C	23675A30C.DWG
13.0-13.2	PLAN AND PROFILES - BLUE BREEZE DR. (STA. 300)	A,C	23675A30D.DWG
14.0	PLAN AND PROFILES - AMENITY ENTRANCE (700)	A,C	23675A30E.DWG
15.0	PLAN AND PROFILES - WILDBLUE BLVD. ROUNDABOUT (STA. 400)	A,C	23675A30F.DWG
16.0-16.2	PLAN AND PROFILES - LIFT STATIONS (7891, 7892, 7893)	A,C	23675A30G.DWG
17.0-17.1	CONTROL STRUCTURE DETAILS	-	23675A42.DWG
18.0-18.2	TYPICAL CONSTRUCTION DETAILS	-	23675A44.DWG
19.0	EROSION CONTROL DETAILS	-	23675A50.DWG
20.0	STORMWATER POLLUTION PREVENTION PLAN	A	23675A52.DWG
21.0-21.3	UTILITY DETAILS	-	23675A70.DWG
22.0-22.3	LIFT STATION 7891, 7892, & 7893 DETAILS	-	23675A71.DWG
23.0-23.2	OFFSITE TURN LANES ALICO RD.	A	23675A90.DWG
24.0	DEWATERING PLANS	A	23675A93.DWG
26.0-26.10	STREET LIGHTING PLANS	A	23675A96.DWG
27.0	ALICO ROAD M.O.T. PLANS	A,E	23675A97.DWG

CROSS-REFERENCED DRAWINGS

XREF	DESCRIPTION	DRAWING NAME
A	BASE LINEWORK PLAN	23675A00.DWG
B	AERIAL PHOTOGRAPH	IMAGE_1.JPG
C	PROFILE BASE PLAN	23675A00P.DWG
D	SURVEY	23372S00.DWG
E	ALICO M.O.T. PLAN	23675M00.DWG

Minor Change #6

APPROVED  
DOS2017-00103  
Tom Sawtell, Plan Reviewer  
Lee County Development Services  
3/24/2020

PLAN STATUS

MINOR CHANGE #6  
03-10-2020

**Barraco**  
and Associates, Inc.  
CIVIL ENGINEERING - LAND SURVEYING  
LAND PLANNING  
[www.barraco.net](http://www.barraco.net)  
2271 MCGREGOR BLVD., SUITE 100  
POST OFFICE DRAWER 2800  
FORT MYERS, FLORIDA 33902-2800  
PHONE (239) 461-3170  
FAX (239) 461-3169  
FLORIDA CERTIFICATES OF AUTHORIZATION  
ENGINEERING 7995 - SURVEYING LB-6940

PREPARED FOR

**LENNAR**  
LENNAR HOMES  
10471 BEN C PRATT / 6 MILE  
CYPRESS PARKWAY  
FORT MYERS, FLORIDA 33966  
PHONE (239) 278-1177  
FAX (239) 931-4749

PROJECT DESCRIPTION

**WildBlue**  
LEE COUNTY, FLORIDA

ENGINEER OF RECORD  
TIMOTHY B. GAVIN, P.E., FOR THE FIRM  
FLORIDA P.E. NO. 70675 - TIMG@BARRACO.NET  
Timothy B. Gavin, P.E.  
70675  
2020.03.10  
15:00:10 -04'00'  
This item has been electronically signed and sealed by Timothy B. Gavin on the date adjacent to the seal using a SHA authentication code.  
Printed copies of this document are not considered signed and sealed and the SHA authentication code must be verified on any electronic copies.  
DRAWING NOT VALID WITHOUT SEAL, SIGNATURE AND DATE  
(C) COPYRIGHT 2020, BARRACO AND ASSOCIATES, INC.  
REPRODUCTION, CHANGES OR ASSIGNMENTS ARE PROHIBITED

FILE NAME J:\23675A01.DWG  
LOCATION J:\23675\DWG\DO  
PLOT DATE TUE. 3-10-2020 - 10:39 AM  
PLOT BY SCOTT WHEELER JR

CROSS REFERENCED DRAWINGS

PLAN REVISIONS  

06-20-19	MINOR CHANGE #1	2
07-19-19	MINOR CHANGE #2	3
11-04-19	MINOR CHANGE #3	4
11-06-19	D.O. AMENDMENT #2 CHANGES	5
12-24-19	MINOR CHANGE #4	6
01-31-20	MINOR CHANGE #5	7
02-26-20	LCU COMMENTS DATED 02-25-20	8
03-06-20	MINOR CHANGE #6	9

PLAN STATUS  
MINOR CHANGE #6  
03-10-2020

COVER SHEET  
AND  
LOCATION MAP  
PROJECT / FILE NO. 23675  
SHEET NUMBER 1.0



