

LIMITED REVIEW DEVELOPMENT ORDER  
FOR

WILDBLUE  
(WILDBLUE LAKE NORTH)

PART OF SECTIONS 7,8,17,18,19,20, TOWNSHIP 46 SOUTH, RANGE 26 EAST  
FORT MYERS, LEE COUNTY, FLORIDA

PROJECT DATA

<b>SITE ADDRESS</b>	<b>PROJECT DATUM</b>	
EXISTING LAKE	STATE PLANE FLORIDA WEST ZONE NAD 1983 (NSRS2007) NORTH AMERICAN VERTICAL DATUM (NAVD) 1988	
<b>ZONING</b>	<b>RECORD PLAT</b>	
MPD (RESOLUTION Z-15-021)	INSTRUMENT NO.: 2020000013482	
<b>FLOOD ZONE</b>	<b>STRAP NUMBERS</b>	
ACCORDING TO FIRM 12071C0625 EFFECTIVE DATE AUGUST 28, 2008, THE SUBJECT PARCEL IS NOT LOCATED WITHIN A SPECIAL FLOOD HAZARD AREA (PANEL NOT PRINTED)	17-46-26-L1-102L1.0000	
<b>PERMIT REQUIREMENTS</b>		
<b>AGENCY</b>	<b>STATUS</b>	<b>NOTES</b>
S. FLORIDA WATER MANAGEMENT DISTRICT	APPROVED	36-05075-P
LEE COUNTY DEVELOPMENT ORDER	PENDING	-
FLORIDA DEPARTMENT OF HEALTH	N/A	-
FLORIDA DEPT. OF ENVIRONMENTAL PROTECTION	PENDING	-
F.D.O.T. CONNECTION PERMIT	N/A	-
F.D.O.T. DRAINAGE CONNECTION PERMIT	N/A	-
F.D.O.T. UTILITY PERMIT	N/A	-
ARMY CORPS OF ENGINEERS	APPROVED	SAJ-2003-10995
F.D.E.P. NOTICE OF INTENT	N/A	-

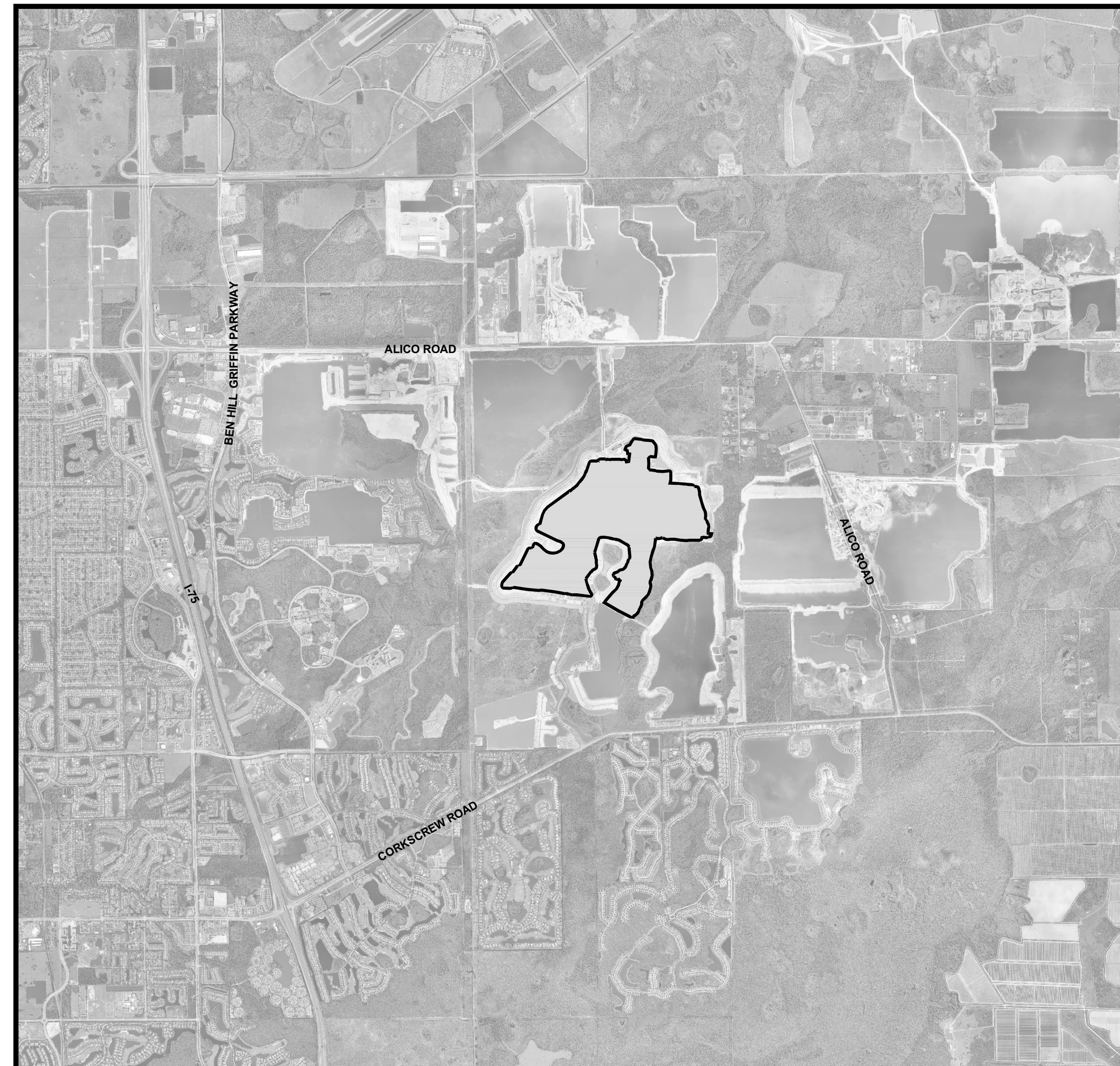
NOTE: CONTRACTOR MUST OBTAIN AND KEEP ON FILE A COPY OF ALL PERMITS  
REQUIRED PRIOR TO COMMENCEMENT OF ANY CONSTRUCTION ACTIVITY

DESIGN TEAM

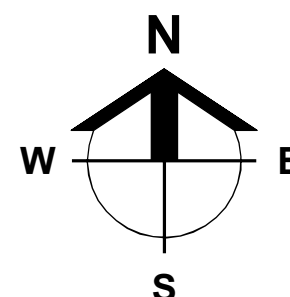
<b>PROJECT ENGINEER</b>	<b>PROJECT MANAGEMENT</b>
TIMOTHY B. GAVIN, P.E.	CHRIS VAN BUSKIRK
<b>DESIGN ENGINEER</b>	<b>PROJECT SURVEYOR</b>
TIMOTHY B. GAVIN, P.E.	SCOTT A. WHEELER, PSM
<b>LEAD DESIGN TECHNICIAN</b>	<b>SITE PLANNING</b>
SCOTT A. WHEELER, JR.	JENNIFER SAPEN, AICP
<b>DESIGN STAFF</b>	<b>LAND PLANNING</b>
-	JENNIFER SAPEN, AICP
<b>QUALITY CONTROL</b>	<b>RECORD DRAWINGS</b>
CHRIS VAN BUSKIRK	

THESE PLANS MAY HAVE BEEN MODIFIED IN SIZE BY REPRODUCTION.  
THIS MUST BE CONSIDERED WHEN OBTAINING SCALED DATA.

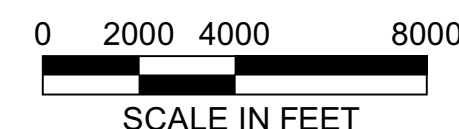
ALL DIMENSIONS ARE IN FEET.



PROJECT  
LOCATION



LOCATION MAP



INDEX OF DRAWINGS

ENGINEER OF RECORDS' SIGNATURE AND SEAL APPLY TO THE FOLLOWING PLAN SHEETS, EXCLUDING ANY SUPPLEMENTS:

SHEET	DESCRIPTION	XREF	DRAWING NAME
1.0	COVER SHEET AND LOCATION MAP	B	23675LDO01.DWG
2.0	STANDARD NOTES, LEGEND, AND ABBREVIATIONS	-	23675LDO02.DWG
3.0	SITE PLAN, TYPICAL SECTIONS AND DETAILS	A	23675LDO10.DWG

**\*\*FINAL INSPECTION REQUIRED\*\***  
At the completion of the improvements, please  
submit a Letter of Substantial Compliance to  
schedule a Final Inspection.

APPROVED  
LDO2020-00402  
Tom Sawtell, Plan Reviewer  
Lee County Development Services  
10/21/2020

CROSS-REFERENCED DRAWINGS:

XREF	DESCRIPTION	DRAWING NAME
A	BASE LINEWORK PLAN	23675A00.DWG
B	AERIAL PHOTOGRAPH	IMAGE_1.JPG
C	PROFILE BASE PLAN	23675A00P.DWG
D	SURVEY	23372S00.DWG

PLAN STATUS

LDO REVIEW PLANS  
10-16-2020

**Barraco**  
and Associates, Inc.  
CIVIL ENGINEERING - LAND SURVEYING  
LAND PLANNING

www.barraco.net

2271 MCGREGOR BLVD., SUITE 100  
POST OFFICE DRAWER 2800  
FORT MYERS, FLORIDA 33902-2800  
PHONE (239) 461-3170  
FAX (239) 461-3169

FLORIDA CERTIFICATES OF AUTHORIZATION  
ENGINEERING 7995 - SURVEYING LB-6940

PREPARED FOR

**LENNAR**

LENNAR HOMES  
10471 BEN C PRATT / 6 MILE  
CYPRESS PARKWAY  
FORT MYERS, FLORIDA 33966

PHONE (239) 278-1177  
FAX (239) 931-4749

PROJECT DESCRIPTION

**WildBlue**

LEE COUNTY, FLORIDA

ENGINEER OF RECORD

TIMOTHY B. GAVIN, P.E., FOR THE FIRM  
FLORIDA P.E. NO. 70675 - TIMG@BARRACO.NET

Timothy B.  
Gavin, P.E.  
70675  
2020.10.16  
10:46:39 -04'00'

This item has been electronically signed and sealed by  
Timothy B. Gavin on the date adjacent to the seal using a SHA  
authentication code.

Printed copies of this document are not considered signed  
and sealed and the SHA authentication code must be verified  
on any electronic copies.

DRAWING NOT VALID WITHOUT SEAL, SIGNATURE AND DATE  
(C) COPYRIGHT 2020, BARRACO AND ASSOCIATES, INC.  
REPRODUCTION, CHANGES OR ASSIGNMENTS ARE PROHIBITED

FILE NAME J:\23675\DWG\DO-LDO (09-23-20)

LOCATION J:\23675\DWG\DO-LDO (09-23-20)

PLOT DATE FRI 10-16-2020 - 8:06 AM

PLOT BY SCOTT WHEELER JR

CROSS REFERENCED DRAWINGS

MASTER = BAI-COVER-1.DWG

PLAN REVISIONS


PLAN STATUS

LDO REVIEW PLANS  
10-16-2020

COVER SHEET  
AND  
LOCATION MAP

PROJECT / FILE NO.	SHEET NUMBER
23675	1.0



## STANDARD ABBREVIATIONS

NOTE: SEE FLORIDA DEPARTMENT OF TRANSPORTATION DESIGN STANDARDS INDEX ABBREVE FOR ADDITIONAL ABBREVIATIONS NOT LISTED BELOW.

AASHTO	AMERICAN ASSOCIATION OF TRANSPORTATION OFFICIALS	CULV	CULVERT	FIN	FINISH	M.H.W.	MEAN HIGH WATER	REL	RELOCATED
ABO.	ABANDONED	CYL	CYLINDRICAL	FL	FLORIDA	MILE	MILE	REMOVED	
AC	ACRE	D	DEGREE OF CURVATURE	FLEX	FLEXIBLE	MIN	MINIMUM	REQ	REQUIRED
A.D.A.	AMERICANS WITH DISABILITIES ACT	DA	DEED	F.O.C.	FACE OF CURB	MISC.	MISCELLANEOUS	RES	RESIDENCE
ADJ	ADJUST	D	DRAINAGE AREA	FRAC	FRACTION	M.L.W.	MEAN LOW WATER	R	RAISED REFLECTIVE PAVEMENT MARKERS
A.D.T.	AVERAGE DAILY TRAFFIC	D.B.	DEED BOOK	FREQ	FREQUENCY	M.O.T.	MAINTENANCE OF TRAFFIC	R.P.B.D.	REDUCED PRESSURE BACKFLOW PREVENTION DEVICE
A.E.	ACCESS EASEMENT	FT	FEET	FURN	FURNISH	M.P.H.	MILES PER HOUR	R.R.	RIGHT
A.A.D.T.	ANNUAL AVERAGE DAILY TRAFFIC	DBL	DOUBLE	G	GRAM	M.S.L.	MEAN SEA LEVEL	RT	RIGHT OF WAY
AGG.	AGGREGATE	D.O.C.V.	DEGREE OF CURVATURE (SPIRAL)	GALV	GALVANIZED	M.U.T.C.A.	MANUAL ON UNIFORM TRAFFIC CONTROL DEVICES	S	SOUTH
A.I.C.P.	AMERICAN INSTITUTE OF CERTIFIED PLANNERS	D.E.	DRAINAGE EASEMENT	GALV.	GALVANIZED	N	NORTH	SAN.	SANITARY
ALT	ALTERNATE	DEM	DEMOLITION	GAR	GARAGE	NE	NORTH EAST	SCH.	SCHEDULE
ALUM	ALUMINUM	DEN	DENSITY	GOVT	GOVERNMENT	NGVD	NATIONAL GEODETIC VERTICAL DATUM OF 1929	SEC	SECTION
A.M.	12:00 MIDNIGHT UNTIL 11:59 NOON	DEPT.	DEPARTMENT	GM.	GROSS MILE	NAVD	NORTH AMERICAN VERTICAL DATUM OF 1988	SED	SEDIMENT
A.N.S.I.	AMERICAN NATIONAL STANDARDS INSTITUTE	DET	DETOUR	GR	GROUND	N.G.S.	NATIONAL GEODETIC SURVEY	SPEC	SPECIFICATION
APPL.	APPLICATION	D.H.W.	DIAMETER	GRND.	GROUND	N.M.	NET MILE	S.R.	STATE ROAD
ASPH.	ASPHALT	D.I.P.	DUCTILE IRON PIPE	H	HEIGHT	N.T.S.	NOT TO SCALE	ST	STREET
ASSY.	ASSEMBLY	DIR	DIRECTION	H.D.	HIGH DENSITY	N.W.	NORTH WEST	STA	STATION
A.S.T.M.	AMERICAN SOCIETY FOR TESTING MATERIALS	DIST.	DISTANCE	HNDRL	HANDRAIL	N.W.	NORTH WEST	STD	STANDARD
AUX.	AUXILIARY	DR	DRIVE	HORIZ	HORIZONTAL	O.D.	OUTSIDE DIAMETER	STR	STRUCTURE
AVE.	AVENUE	D.R.W.	DRIVEWAY	H.P.	HIGH PRESSURE OR HORSE POWER	O.E.	OVERHEAD ELECTRIC	STR	STRUCTURE
AVG.	AVERAGE	D.S.	DESIGN SPEED	H.W.	HIGH WATER	OPT.	OPTIONAL	STR	STRUCTURE
B.E.	BURIED ELECTRIC	D.S.W.T.	DRY SEASON WATER TABLE	HWY.	HIGHWAY	OFF	OFFICIAL RECORD BOOK	S.Y.	SQUARE YARD
BLVD.	BOULEVARD	DWG.	DRAWING	HYD.	HIGHWAY	PLAT	PLAT	SW.	SOUTHWEST
B.M.	BENCHMARK	E	EACH	I.D.	INVERT	PAGE	PAGE	T.B.D.	TO BE DETERMINED
B.O.C.	BACK OF CURB	E.A.	EACH OF SUPER ELEVATION	I.E.	INVERT ELEVATION	P.I.	POINT OF INTERSECTION	T.N.	TON
BOT.	BOTTOM	E.A.	EACH	I.E.	INVERT ELEVATION	P.I.	POINT OF INTERSECTION	T.N.	TON
B.P.	BORROW PIT	E.I.	ENGINEERING INTERN	INC.	INCORPORATED	P.I.	POINT OF INTERSECTION	T.N.	TON
BR.	BRIDGE	EL or ELEV	ELEVATION	INCL	INCLUDED	P.M.	12:00 NOON UNTIL 11:59 MIDNIGHT	U.E.	UTILITY EASEMENT
BRG.	BEARING	ELEC	ELECTRIC	INCL	INCLUDED	P.M.	12:00 NOON UNTIL 11:59 MIDNIGHT	U.E.	UTILITY EASEMENT
B.T.	BURIED TELEPHONE	ELLIP	ELLIPTICAL	INCL	INCLUDED	P.M.	12:00 NOON UNTIL 11:59 MIDNIGHT	U.E.	UTILITY EASEMENT
BTWN.	BETWEEN	EMBK	EMBANKMENT	INCL	INCLUDED	P.M.	12:00 NOON UNTIL 11:59 MIDNIGHT	U.E.	UTILITY EASEMENT
BW	BARBED WIRE	ENCL	ENCLOSURE	INCL	INCLUDED	P.M.	12:00 NOON UNTIL 11:59 MIDNIGHT	U.E.	UTILITY EASEMENT
CALC.	CALCULATED	E.O.P.	EDGE OF PAVEMENT	INCL	INCLUDED	P.M.	12:00 NOON UNTIL 11:59 MIDNIGHT	U.E.	UTILITY EASEMENT
C	CALCULATED	E.O.W.	EDGE OF WATER	INCL	INCLUDED	P.M.	12:00 NOON UNTIL 11:59 MIDNIGHT	U.E.	UTILITY EASEMENT
CAP.	CAPACITY	EQ.	EQUATION OR EQUAL	INCL	INCLUDED	P.M.	12:00 NOON UNTIL 11:59 MIDNIGHT	U.E.	UTILITY EASEMENT
CATV.	CABLE TELEVISION	EQUIP.	EQUIPMENT	INCL	INCLUDED	P.M.	12:00 NOON UNTIL 11:59 MIDNIGHT	U.E.	UTILITY EASEMENT
C.B.	CATCH BASIN	E.R.C.P.	ENRICHED REINFORCED CONCRETE PIPE	INCL	INCLUDED	P.M.	12:00 NOON UNTIL 11:59 MIDNIGHT	U.E.	UTILITY EASEMENT
CBC.	CONCRETE BOX CULVERT	ESMT.	EASEMENT	INCL	INCLUDED	P.M.	12:00 NOON UNTIL 11:59 MIDNIGHT	U.E.	UTILITY EASEMENT
CBS.	CONCRETE BOX STRUCTURE	ETC.	ET CETERA (AND SO FORTH)	INCL	INCLUDED	P.M.	12:00 NOON UNTIL 11:59 MIDNIGHT	U.E.	UTILITY EASEMENT
CC	COUNTY COMMISSIONERS	ETC.	ET CETERA (AND SO FORTH)	INCL	INCLUDED	P.M.	12:00 NOON UNTIL 11:59 MIDNIGHT	U.E.	UTILITY EASEMENT
CCMB.	COUNTY COMMISSIONERS MINUTES CENTER	ETC.	ET CETERA (AND SO FORTH)	INCL	INCLUDED	P.M.	12:00 NOON UNTIL 11:59 MIDNIGHT	U.E.	UTILITY EASEMENT
CEM.	CEMENT	EXT.	EXTENSION	INCL	INCLUDED	P.M.	12:00 NOON UNTIL 11:59 MIDNIGHT	U.E.	UTILITY EASEMENT
C.F.	CUBIC FOOT	EXT.	EXTENSION	INCL	INCLUDED	P.M.	12:00 NOON UNTIL 11:59 MIDNIGHT	U.E.	UTILITY EASEMENT
C.I.	CAST IRON	EXT.	EXTENSION	INCL	INCLUDED	P.M.	12:00 NOON UNTIL 11:59 MIDNIGHT	U.E.	UTILITY EASEMENT
C.I.P.	CAST IRON PIPE	F	FILL	INCL	INCLUDED	P.M.	12:00 NOON UNTIL 11:59 MIDNIGHT	U.E.	UTILITY EASEMENT
CL	CENTER LINE	F	FILL	INCL	INCLUDED	P.M.	12:00 NOON UNTIL 11:59 MIDNIGHT	U.E.	UTILITY EASEMENT
CONC.	CONCRETE	F	FILL	INCL	INCLUDED	P.M.	12:00 NOON UNTIL 11:59 MIDNIGHT	U.E.	UTILITY EASEMENT
C.M.	CONCRETE MONUMENT	F.A.C.B.C.	FLORIDA ACCESSIBILITY CODE FOR BUILDING CONSTRUCTION	INCL	INCLUDED	P.M.	12:00 NOON UNTIL 11:59 MIDNIGHT	U.E.	UTILITY EASEMENT
C.M.P.	CORRUGATED METAL PIPE	F.B.C.	FLORIDA BUILDING CODE	INCL	INCLUDED	P.M.	12:00 NOON UNTIL 11:59 MIDNIGHT	U.E.	UTILITY EASEMENT
CO	COUNTY OR COMPANY	F.D.C.	FIRE DEPARTMENT	INCL	INCLUDED	P.M.	12:00 NOON UNTIL 11:59 MIDNIGHT	U.E.	UTILITY EASEMENT
CIO	CLEANOUT	F.D.	FIRE DEPARTMENT	INCL	INCLUDED	P.M.	12:00 NOON UNTIL 11:59 MIDNIGHT	U.E.	UTILITY EASEMENT
COL	COLUMN	F.D.C.	FIRE DEPARTMENT	INCL	INCLUDED	P.M.	12:00 NOON UNTIL 11:59 MIDNIGHT	U.E.	UTILITY EASEMENT
COM	COMMERCIAL	F.D.C.	FIRE DEPARTMENT	INCL	INCLUDED	P.M.	12:00 NOON UNTIL 11:59 MIDNIGHT	U.E.	UTILITY EASEMENT
CONST.	CONSTRUCTION	FDN.	FOUNDATION	INCL	INCLUDED	P.M.	12:00 NOON UNTIL 11:59 MIDNIGHT	U.E.	UTILITY EASEMENT
CONTR.	CONTRACTOR	F.D.OT.	FLORIDA DEPARTMENT OF TRANSPORTATION	INCL	INCLUDED	P.M.	12:00 NOON UNTIL 11:59 MIDNIGHT	U.E.	UTILITY EASEMENT
COORD.	COORDINATE	FED.	FEDERAL	INCL	INCLUDED	P.M.	12:00 NOON UNTIL 11:59 MIDNIGHT	U.E.	UTILITY EASEMENT
COR.	CORNER	FERT.	FERTILIZER	INCL	INCLUDED	P.M.	12:00 NOON UNTIL 11:59 MIDNIGHT	U.E.	UTILITY EASEMENT
C.P.	CONTROL POINT	F.E.S.	FLARED END SECTION	INCL	INCLUDED	P.M.	12:00 NOON UNTIL 11:59 MIDNIGHT	U.E.	UTILITY EASEMENT
C.R.	CONTROL STRUCTURE	F.F.E.	FINISHED FLOOR ELEVATION	INCL	INCLUDED	P.M.	12:00 NOON UNTIL 11:59 MIDNIGHT	U.E.	UTILITY EASEMENT
C.S.	CONTROL STRIP	FWA	FEDERAL HIGHWAY ADMINISTRATION	INCL	INCLUDED	P.M.	12:00 NOON UNTIL 11:59 MIDNIGHT	U.E.	UTILITY EASEMENT
CTR	CENTER			INCL	INCLUDED	P.M.	12:00 NOON UNTIL 11:59 MIDNIGHT	U.E.	UTILITY EASEMENT
C.U.E.	COUNTY UTILITY EASEMENT			INCL	INCLUDED	P.M.	12:00 NOON UNTIL 11:59 MIDNIGHT	U.E.	UTILITY EASEMENT

## GENERAL NOTES

NOTE: SEE ADDITIONAL NOTES ON SITE DEVELOPMENT PLANS AND DETAIL SHEETS WHICH ARE SPECIFIC TO THIS PROJECT. IN THE EVENT OF A CONFLICT, UTILIZE THE NOTES ON SITE DEVELOPMENT PLANS.

- THESE PLANS HAVE BEEN PREPARED IN ACCORDANCE WITH AND ARE GOVERNED BY THE LATEST EDITIONS OF THE F.D.O.T. STANDARD SPECIFICATIONS FOR ROAD AND BRIDGE CONSTRUCTION, THE F.D.O.T. DESIGN STANDARDS INDEX, AND ALL APPLICABLE DESIGN STANDARDS MODIFICATIONS FOUND AT <http://www.dot.state.fl.us/design> AND ALL LOCAL CODES.
- ALL APPROVALS REQUIRED IN CONJUNCTION WITH THESE NOTES MUST BE OBTAINED IN WRITING BY THE CONTRACTOR. ANY DEVIATIONS FROM THE PLANS AND / OR SPECIFICATIONS MUST BE APPROVED IN ADVANCE BY THE OWNER, ENGINEER AND APPROPRIATE REGULATORY AGENCY.
- CONTRACTOR SHALL ENSURE THAT ALL PERMITS ARE IN PLACE PRIOR TO CONSTRUCTION, THAT COPIES OF ALL PERMITS ARE RETAINED ON SITE AT ALL TIMES AND SHALL ADHERE TO ALL PERMIT CONDITIONS. AT LEAST 72 HOURS PRIOR TO CONSTRUCTION CONTRACTOR SHALL NOTIFY THE LOCAL MAINTENANCE ENGINEER'S OFFICE TO SECURE GENERAL USE PERMITS AND / OR OTHER PERMITS REQUIRED FOR WORK WITHIN F.D.O.T. RIGHT-OF-WAY.
- ALL CONSTRUCTION SHALL COMPLY WITH THE LATEST VERSIONS OF THE AMERICANS WITH DISABILITIES ACT (A.D.A.) AND THE FLORIDA ACCESSIBILITY CODE FOR BUILDING CONSTRUCTION (F.A.C.B.C.). MAXIMUM SLOPE IN ACCESSIBLE PARKING SPACES AND LOADING ZONES SHALL NOT EXCEED 2% IN ALL DIRECTIONS. MAXIMUM RUNNING SLOPE SHALL NOT EXCEED 5% AND CROSS SLOPE SHALL NOT EXCEED 2% ON ALL SIDEWALKS AND CROSSWALKS.
- SIDEWALKS ARE DESIGNED AND INTENDED FOR PEDESTRIAN TRAFFIC ONLY. ALL SIDEWALKS AND CURB CUTS SHALL BE IN ACCORDANCE WITH F.D.O.T. INDEX 522-003 AND SHALL INCLUDE DETECTABLE WARNING SURFACES. VALLEY GUTTER ADJACENT TO CURB CUTS SHALL DEViate FROM STANDARD DETAIL BY NOT EXCEEDING 12:1 SLOPES.
- THE CONTRACTOR SHALL NOTIFY THE INSPECTOR, OWNER'S REPRESENTATIVE AND APPROPRIATE AGENCY A MINIMUM OF 72 HOURS PRIOR TO ALL INSPECTIONS REQUIRED BY THE RESPECTIVE PERMIT.
- THE CONTRACTOR SHALL NOTIFY THE OWNER AND CONTACT ALL UTILITY COMPANIES FOR LOCATIONS OF EXISTING UTILITIES A MINIMUM OF 72 HOURS PRIOR TO CONSTRUCTION. CONTRACTOR SHALL DETERMINE THE LOCATION OF EXISTING UTILITIES OTHER THAN THOSE SHOWN ON THESE PLANS EXIST. THE EXACT SIZES, ELEVATIONS AND LOCATIONS SHALL BE VERIFIED BY THE CONTRACTOR IN THE FIELD PRIOR TO COMMENCING CONSTRUCTION OR ORDERING MATERIALS. CONTRACTOR SHALL NOTIFY ENGINEER / OWNER OF ANY DISCREPANCIES PRIOR TO CONSTRUCTION.
- ANY PUBLIC LAND CORNER OR BENCHMARK WITHIN THE LIMITS OF CONSTRUCTION IS TO BE PROTECTED AND IF IN DANGER OF BEING DESTROYED MUST BE PROPERLY REIFIED BY THE CONTRACTOR.
- EXISTING IMPROVEMENTS SHALL REMAIN UNLESS NOTED OTHERWISE, AND SHALL BE RESTORED TO A CONDITION EQUIVALENT TO THAT WHICH EXISTED PRIOR TO COMMENCING CONSTRUCTION, AT NO ADDITIONAL COST TO THE OWNER. EXISTING OFF-SITE DRAINAGE PATTERNS SHALL BE MAINTAINED DURING CONSTRUCTION.
- THE CONTRACTOR SHALL BE RESPONSIBLE FOR REMOVING SITE AND PROPERLY DISPOSED OF FOR THIS PROJECT. ALL DEBRIS SHALL BE REMOVED FROM THE PROJECT AND UNDERLYING DISPOSED OF.
- CONTRACTOR SHALL BE RESPONSIBLE FOR MAINTAINING TRAFFIC AND USING OF THE EXISTING STREETS ADJACENT TO THE PROJECT. ALL TRAFFIC MAINTENANCE CONTROL SHALL BE IN ACCORDANCE WITH THE LATEST EDITION OF THE FLORIDA MANUAL OF TRAFFIC CONTROL AND SAFE PRACTICES FOR STREET CONSTRUCTION, MAINTENANCE, AND UTILITY OPERATIONS. CONTRACTOR SHALL ASSURE THAT ALL TRAFFIC CONTROL DEVICES MEET ACCEPTABLE STANDARDS AS OUTLINED IN THE LATEST EDITION OF THE AMERICAN TRAFFIC SAFETY SERVICES ASSOCIATION (ATSSA) "QUALITY STANDARDS FOR WORK ZONE TRAFFIC CONTROL DEVICES" AND SHALL IMMEDIATELY REPAIR, REPLACE OR CLEAN DAMAGED, DEFACED OR DIRTY DEVICES. TRAFFIC CONTROL OPERATION PROCEDURES SHALL BE SUBMITTED TO OWNER FOR APPROVAL PRIOR TO BEGINNING CONSTRUCTION. ANY IMPACTS TO TRAFFIC FLOW SHALL BE COORDINATED WITH AND APPROVED BY THE APPROPRIATE LOCAL AGENCY.
- CONTRACTOR SHALL VERIFY ALL DIMENSIONS AND ELEVATIONS PRIOR TO COMMENCEMENT OF CONSTRUCTION. ANY DISCREPANCIES SHALL BE IMMEDIATELY REPORTED TO THE ENGINEER AND OWNER'S REPRESENTATIVE.
- THE LOCATIONS OF PROPOSED DRAINAGE STRUCTURES AND UTILITY LINES MAY BE FIELD ADJUSTED TO PRESERVE EXISTING VEGETATION AS APPROVED IN ADVANCE BY THE ENGINEER. UNDERGROUND CONTRACTOR SHALL MINIMIZE THE WORK AREA AND WIDTH OF TRENCHES TO AVOID DISTURBANCES OF NATURAL VEGETATION. EXERCISE CARE TO PROTECT THE ROOTS OF TREES TO REMAIN. WITHIN THE BRANCH SPREAD OF SUCH TREES, PERFORM ALL TRENCHING BY HAND. OPEN THE TRENCH ONLY WHEN UTILITIES CAN BE INSTALLED IMMEDIATELY. PRUNE INJURED ROOTS AND BACKFILL AS SOON AS POSSIBLE. SPOIL FROM TRENCHES SHALL BE PLACED ONLY ON PREVIOUSLY CLEARED AREAS OR AS DIRECTED BY THE OWNER. CONTRACTOR SHALL NOT REMOVE OR DISTURB ANY TREES AND/OR SHRUBS WITHOUT PRIOR APPROVAL BY SPOIL.
- INSTALLATION OF SUBSURFACE CONSTRUCTION, INCLUDING BUT NOT LIMITED TO WATER, SEWER AND IRRIGATION LINES, PUBLIC UTILITIES AND STORM DRAINAGE IS REQUIRED PRIOR TO COMPACTION OF THE ROADWAY SUBGRADE.
- SUBGRADE AND LIKEROCK BASE COURSES TO BE COMPACTED TO 98% MINIMUM OF THE MAXIMUM DRY DENSITY AS SPECIFIED BY AASHTO T-190 TESTING. CONTRACTOR SHALL PROVIDE THE ENGINEER SATISFACTORY DENSITY TESTS FOR SUBGRADE AND LIKEROCK PRIOR TO PAYMENT OF FINAL ACCEPTANCE. EXCESS ROAD BASE AND COMPACTED SOIL SHALL BE REMOVED FROM ALL LANDSCAPE AREAS PRIOR TO FINAL GRADING.
- SWALE ELEVATIONS SHOWN ARE TO TOP OF SOD. CONTRACTOR TO ADJUST SWALE GRADING ACCORDINGLY. ALL UNPAVED AREAS SHALL BE GRADED TO THE DRAINAGE SYSTEM TO PREVENT STANDING WATER. YARD DRAINS MAY BE ADDED IN GREEN AREAS AS NECESSARY AT THE DIRECTION OF THE LANDSCAPE ARCHITECT OR ENGINEER, AND SHALL HAVE PEDESTRIAN-SAFE GRATES MEETING THE REQUIREMENTS OF H-20 LOADING.
- BERM ELEVATIONS SHOWN ARE THE MINIMUM REQUIRED. CONTRACTOR MAY EXCEED THE MINIMUM BERM ELEVATION BY UP TO 0.5 FEET PROVIDED ALL SLOPE CRITERIA IS MET. ANY CONSTRUCTION OF BERMS IN EXCESS OF THAT LIMIT MUST BE APPROVED BY THE ENGINEER PRIOR TO CONSTRUCTION.
- THE CONTRACTOR SHALL NOTIFY THE ENGINEER WITHIN ONE WEEK OF COMPLETION OF DRAINAGE CONTROL STRUCTURES SO THAT ELEVATIONS MAY BE VERIFIED PRIOR TO COMPLETION OF CONSTRUCTION.
- THE CONTRACTOR IS REQUIRED TO ADJUST ALL EXISTING AND PROPOSED VALVE BOXES, MANHOLE RIMS, GRATES AND OTHER IMPROVEMENTS AS REQUIRED TO MATCH THE FINAL GRADE.
- THE CONTRACTOR SHALL COORDINATE WITH THE OWNER'S REPRESENTATIVE IN REGARDS TO THE LOCATION, SIZE AND QUANTITY OF ALL CONDUITS FOR UTILITIES, IRRIGATION, LIGHTING AND OTHER IMPROVEMENTS PRIOR TO CONSTRUCTION OF THE ROADWAY SUBGRADE, CASING AND/OR CONDUIT SHALL HAVE A MINIMUM OF 30" COVER, EXTEND 5' BEYOND THE EDGE OF PAVEMENT, BACK OF CURB AND/OR SIDEWALK AT EACH END, AND ENDS SHALL BE SEALED AND DENOTED WITH MARKING TAPE.
- CONTRACTOR SHALL NOTIFY THE ENGINEER 24 HOURS PRIOR TO PLACING SOD ON AREAS THAT REQUIRE CRITICAL MINIMUM OR MAXIMUM ELEVATIONS IN ORDER FOR ENGINEER TO VERIFY SUCH ELEVATIONS. THE OBLIGATION TO ACHIEVE MINIMUM ELEVATIONS REMAINS WITH THE CONTRACTOR.
- SOD A 12" STRIP ADJACENT TO ALL PAVEMENT PER F.D.O.T. REQUIREMENTS. SOD ALL UNPAVED DISTURBED AREAS WITHIN A MINIMUM OF 72 HOURS PRIOR TO CONSTRUCTION. CONTRACTOR SHALL DETERMINE THE LOCATION OF EXISTING UTILITIES OTHER THAN THOSE SHOWN ON THESE PLANS EXIST. THE EXACT SIZES, ELEVATIONS AND LOCATIONS SHALL BE VERIFIED BY THE CONTRACTOR IN THE FIELD PRIOR TO COMMENCING CONSTRUCTION OR ORDERING MATERIALS. CONTRACTOR SHALL NOTIFY ENGINEER / OWNER OF ANY DISCREPANCIES PRIOR TO CONSTRUCTION.
- THE CONTRACTOR SHALL REMOVE ALL UNSUITABLE MATERIAL ENCOUNTERED FROM FILL AREAS PRIOR TO PLACEMENT OF FILL, AND SUCH MATERIAL SHALL BE STOCKPILED OR REMOVED AS DIRECTED BY OWNER.
- THE PROPERTY OWNER OR DESIGNATED AUTHORITY IS RESPONSIBLE FOR THE PERPETUAL MAINTENANCE OF ALL FEATURES OF THE WATER MANAGEMENT SYSTEM AS SHOWN IN THESE DRAWINGS AND AS REQUIRED BY LOCAL, STATE AND FEDERAL PERMITS. IT IS FURTHER RECOMMENDED THAT THE SURFACE WATER MANAGEMENT SYSTEM BE INSPECTED SEMI-ANNUALLY.
- CONTRACTOR SHALL VERIFY DESIGN DETAILS WITH ENGINEER PRIOR TO ORDERING STRUCTURES. STRUCTURE TYPES LABELED ON THE PLANS FOR ITEMS SUCH AS JUNCTION BOXES AND INLETS MAY ONLY BE A REFERENCE TO THE TOP OF THE STRUCTURE. CERTAIN STRUCTURE TYPES REQUIRE A LARGER BOTTOM TO ACCOMMODATE LARGER PIPE SIZES AND/OR PIPE ANGLES. THE APPROPRIATE SIZE AND SHAPE OF THE BOTTOM OF THE STRUCTURE SHALL BE DETERMINED BY THE CONTRACTOR WITH CONSIDERATION GIVEN TO ADJACENT EXISTING OR PROPOSED UTILITIES. THE COST FOR THE ENTIRE STRUCTURE IS INCLUDED IN THE UNIT PRICE FOR THE PRIMARY STRUCTURE.
- STORM DRAIN PIPE LENGTHS ARE APPROXIMATE AND HAVE BEEN MEASURED FROM INSIDE FACE OF STRUCTURE. SANITARY SEWER PIPE LENGTHS ARE APPROXIMATE AND ARE MEASURED FROM THE CENTER OF STRUCTURE.
- CONTRACTOR SHALL MAINTAIN MINIMUM SEPARATION BETWEEN UTILITIES AS SHOWN ON "UTILITY LOCATION DETAIL" AND IN ACCORDANCE WITH APPLICABLE LOCAL UTILITY SERVICE PROVIDER REQUIREMENTS.
- ALL COMPONENTS OF THE POTABLE WATER SYSTEM SHALL BE IN CONFORMANCE WITH AMERICAN NATIONAL STANDARDS INSTITUTE / NSF INTERNATIONAL STANDARD 61. ALL COMPONENTS, INSTALLATION AND TESTING OF THE POTABLE WATER SYSTEM SHALL BE IN ACCORDANCE WITH ALL A.W.W.A. APPLICABLE STANDARDS.
- CONTRACTOR TO COORDINATE WITH ALL OTHER CONTRACTORS WORKING ON THE PROJECT SITE. THE OWNER'S REPRESENTATIVE AND WITH ELECTRIC, TELEPHONE AND CABLE COMPANIES TO ASSURE THAT NO SANITARY SEWER, WATERLINE OR IRRIGATION SERVICES ARE INSTALLED UNDER PROPOSED TRANSFORMERS.
- DEFLECTION TESTING IN ACCORDANCE WITH TECHNICAL SPECIFICATIONS FOR GRAVITY SEWER MAY NOT BE UNDERTAKEN UNTIL 30 DAYS AFTER FINAL BACKFILLING OF THE TRENCH IS COMPLETE. SEWER DEFLECTION MAY NOT EXCEED THE MAXIMUM PROVIDED IN THE TECHNICAL SPECIFICATIONS OR 5%, WHICHEVER IS LESS.
- ALL GRAVITY SEWER MAINS SHALL BE TESTED WITH A MANHOLE WITH A DIAMETER OF NOT LESS THAN 95% OF THE INSIDE PIPE DIAMETER. MANHOLE TESTS MUST BE PERFORMED WITHOUT USE OF MECHANICAL PULLING DEVICES.
- NO VEGETATION OR OTHER OBSTRUCTIONS SHALL BE PLACED SO AS TO BLOCK ACCESS OR LINE OF SIGHT TO FIRE HYDRANTS, F.D.C. P.I.V., ETC. IN ACCORDANCE WITH LOCAL FIRE JURISDICTION AND / OR AS SHOWN IN DETAILS.
- ALL CONSTRUCTION SHALL BE IN ACCORDANCE WITH THE FLORIDA FIRE CODE. SEPARATE PERMITS MAY BE REQUIRED FOR ANY DEDICATED FIRE LINE LINE. UNDERGROUND FIRE LINES MUST MEET REQUIREMENT OF NFPA 24. CONTRACTOR TO VERIFY VERIFIED FIRE LINE SIZE WITH BUILDING PLANS PRIOR TO CONST.

## SYMBOL LEGEND

NOTE: THE SYMBOLS REPRESENTED BELOW ARE STANDARDS UTILIZED BY THIS FIRM AND NOT ALL ARE REQUIRED FOR THE SUBJECT PROJECT.

### DRAINAGE

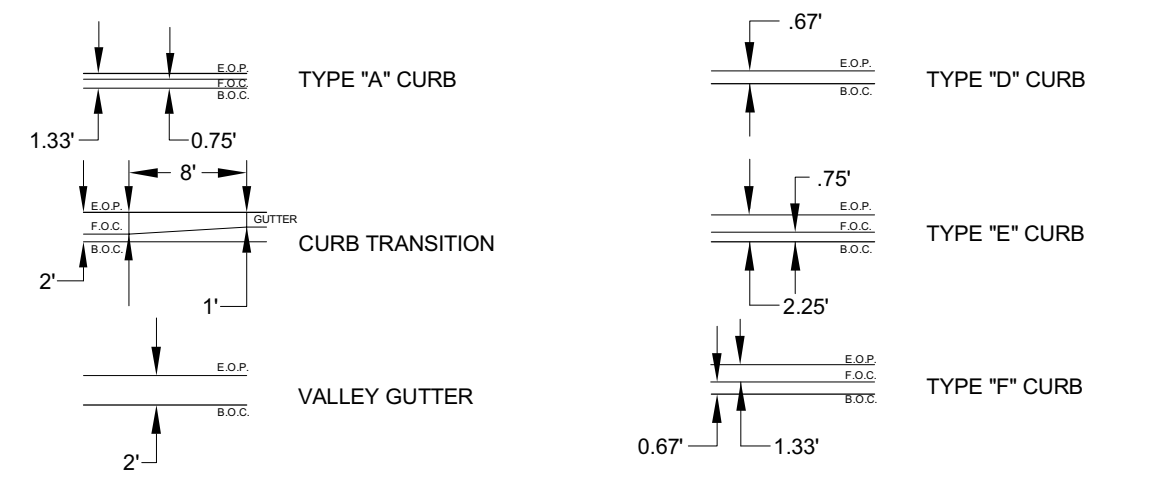
VALLEY GUTTER INLET	TYPE 5 INLET (LEFT)
DITCH BOTTOM INLET	TYPE 5 INLET (RIGHT)
DRAINAGE JUNCTION BOX	TYPE 6 INLET
MITERED END SECTION	TYPE 9 INLET
CONTROL STRUCTURE	TYPE 10 INLET
HEADWALL	YARD DRAIN
FLARED END SECTION	FLOW ARROW

### UTILITIES

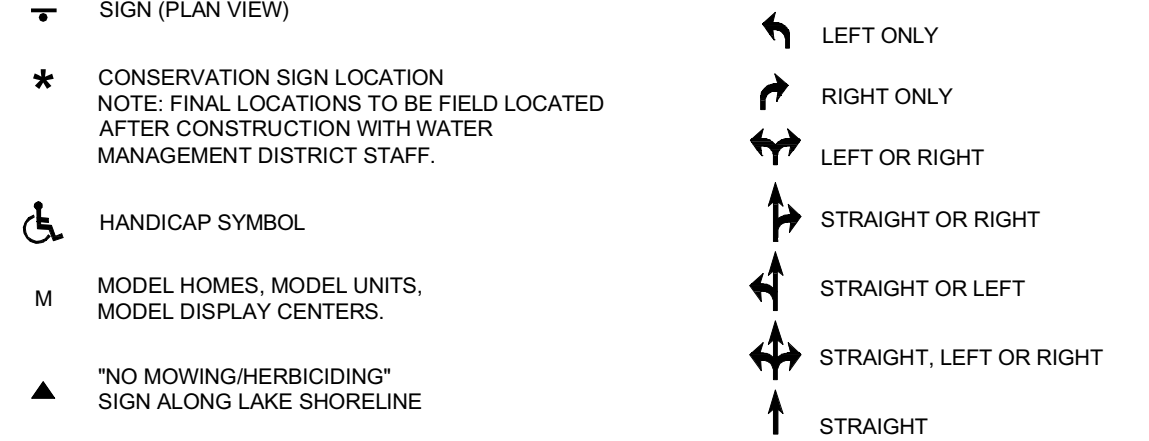
11.25" BEND	SANITARY SEWER MANHOLE
22.5" BEND	SINGLE SANITARY SEWER SERVICE
45" BEND	DOUBLE SANITARY SEWER SERVICE
90" BEND	CLEANOUT
TEE	PUMP STATION
REDUCER	SINGLE IRRIGATION SERVICE
AIR RELEASE VALVE	DOUBLE IRRIGATION SERVICE
WYE	SINGLE WATER SERVICE
CROSS	DOUBLE WATER SERVICE
CAP OR PLUG	FIRE HYDRANT ASSEMBLY (PLAN VIEW)
BACTERIOLOGICAL SAMPLE POINT	FIRE HYDRANT ASSEMBLY (PROFILE VIEW)
PERMANENT BLOW OFF ASSEMBLY	GATE VALVE (PROFILE VIEW)
TEMPORARY BLOW OFF ASSEMBLY	
45" VERTICAL DEFLECTION	
GATE VALVE	
PLUG VALVE	

### STANDARD CURB TYPES

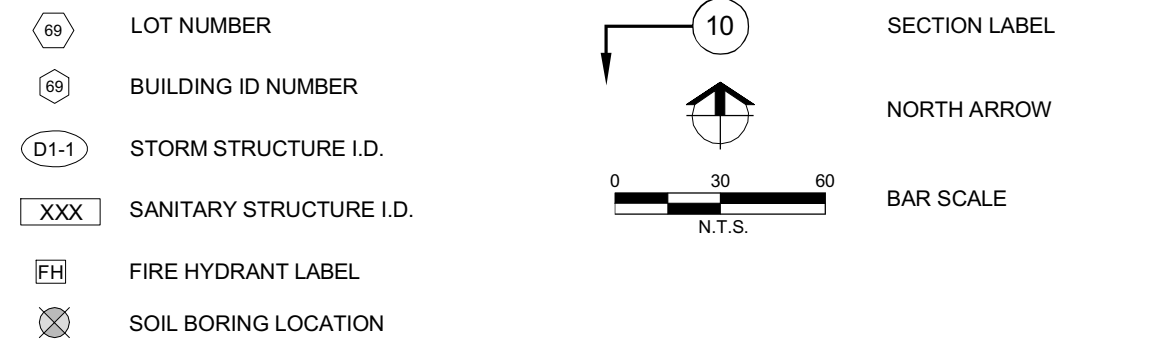
SEE F.D.O.T. INDEX 520-001 FOR ADDITIONAL DETAILS



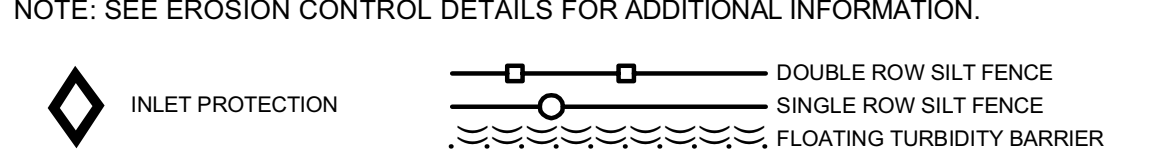
### SIGNAGE AND MARKINGS



### IDENTIFICATION



### EROSION CONTROL



### SURVEYING

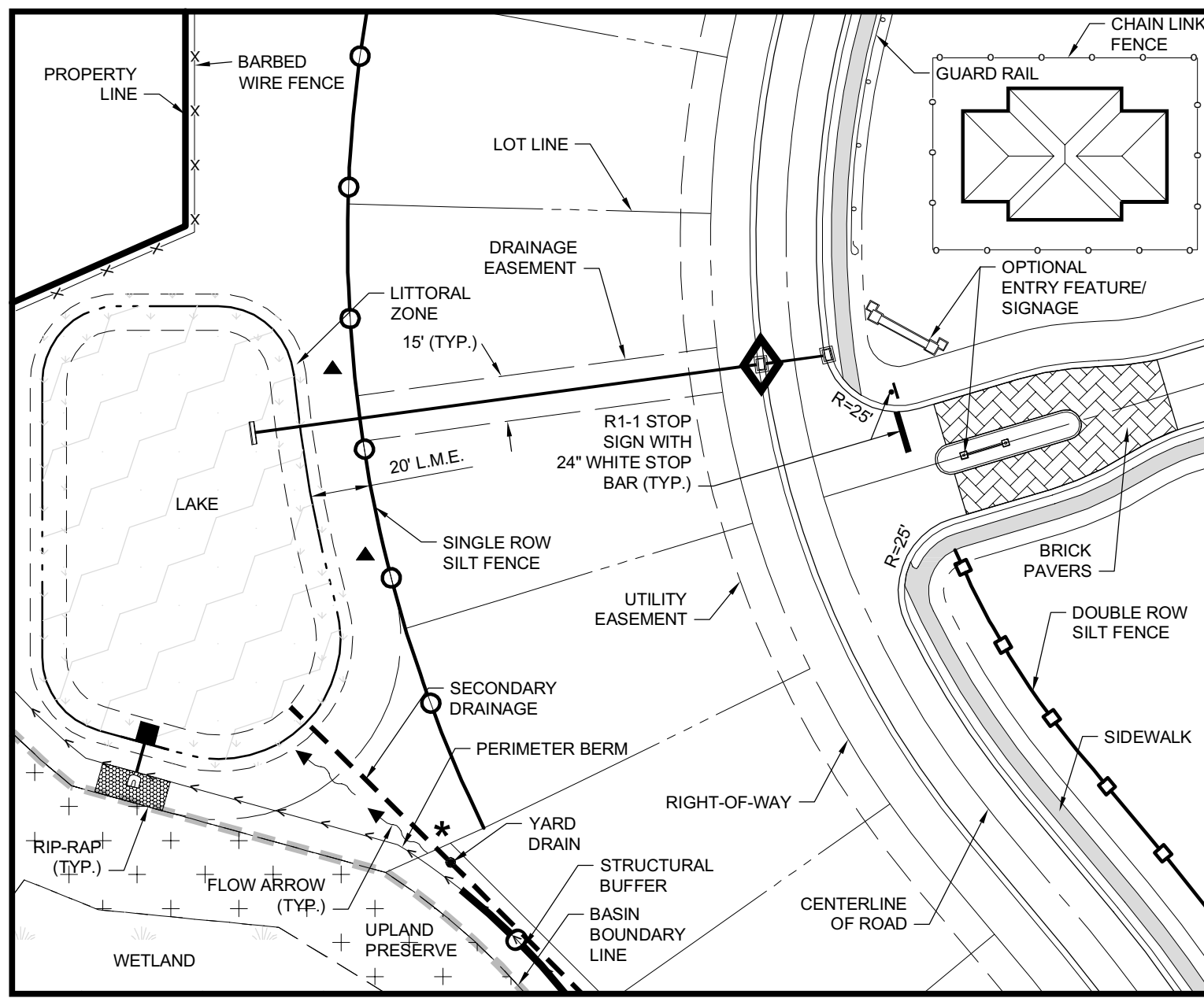


### QUANTITIES AND PAYMENT

CONTRACTOR SHALL REFER TO THE BID TABULATION AND PROJECT TECHNICAL SPECIFICATIONS FOR NOTES REGARDING THE METHOD OF PAYMENT FOR SPECIFIC PAY ITEMS. ITEMS NOT SPECIFICALLY REFERENCED IN THE SPECIFICATIONS OR BID TABULATION SHALL BE PAID FOR PER THE LATEST VERSIONS OF THE APPROPRIATE F.D.O.T. DESIGN STANDARDS INDEX AND F.D.O.T. STANDARD SPECIFICATION SECTION.

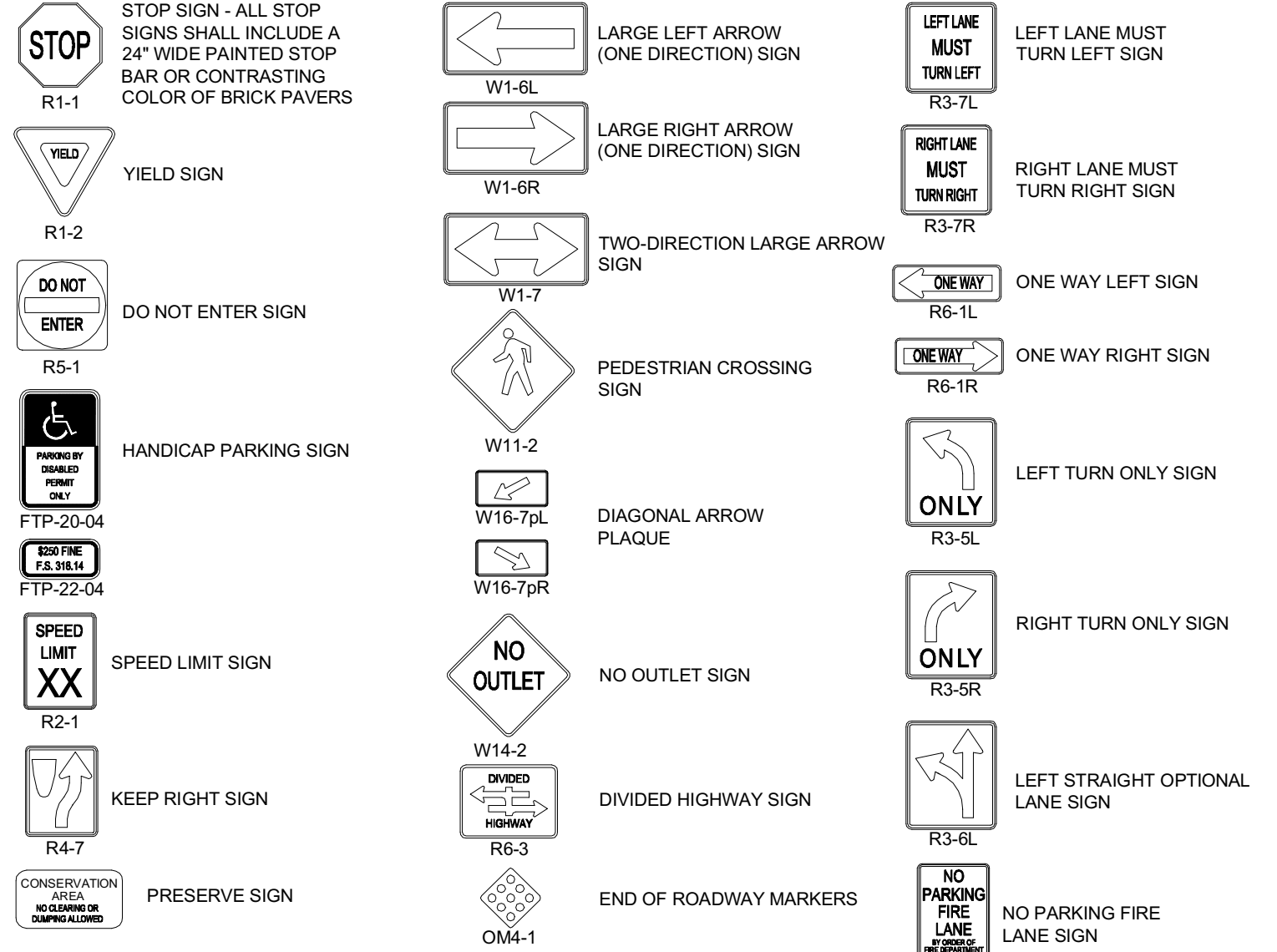
## LINETYPE AND HATCHING LEGEND

NOTE: THE DRAWING BELOW IS PROVIDED AS ONLY AN EXAMPLE OF STANDARD LINETYPES AND HATCHING UTILIZED BY THIS FIRM AND IS NOT REPRESENTATIVE OF THE SUBJECT PROJECT.



## STANDARD STREET SIGNS

THE SIGN LEGEND BELOW IS PROVIDED AS A GRAPHICAL REFERENCE TO ONE OR MORE OF THE SIGNS REQUIRED FOR THIS PROJECT. THE LATEST EDITION OF THE MANUAL ON UNIFORM TRAFFIC CONTROL DEVICES (M.U.T.C.D.) SHOULD BE REFERENCED FOR SPECIFIC DETAILS AND LOCATION REQUIREMENTS.



## SIGNING AND PAVEMENT NOTES

- ALL SIGNING AND PAVEMENT MARKINGS SHALL BE IN ACCORDANCE WITH THE LATEST EDITIONS OF THE F.D.O.T. STANDARDS FOR ROAD AND BRIDGE CONSTRUCTION, THE F.D.O.T. DESIGN STANDARDS INDEX, THE MANUAL ON UNIFORM TRAFFIC CONTROL DEVICES (M.U.T.C.D.) AND ALL APPLICABLE LOCAL STANDARDS. UTILIZATION OF THE 2009 M.U.T.C.D. SHALL BE IN ACCORDANCE WITH F.D.O.T. POLICY.
- DURING CONSTRUCTION, THE CONTRACTOR SHALL COMPLY WITH THE LATEST EDITIONS OF THE "STATE OF FLORIDA MANUAL OF TRAFFIC CONTROL AND SAFE PRACTICES FOR STREET AND HIGHWAY CONSTRUCTION, MAINTENANCE, AND UTILITY OPERATIONS" AND WITH THE "MANUAL ON UNIFORM TRAFFIC CONTROL DEVICES" AND WITH ALL OTHER GOVERNING SAFETY REGULATIONS.
- PAVEMENT MARKINGS SHALL BE PERMANENT REFLECTIVE TRAFFIC PAINT WITH GLASS BEADS IN ACCORDANCE WITH F.D.O.T. STANDARD SPECIFICATIONS SECTION 710 UNLESS NOTED OTHERWISE. PERMANENT PAVEMENT MARKINGS WITHIN F.D.O.T. RIGHT-OF-WAY SHALL BE THERMOPLASTIC UNLESS NOTED OTHERWISE.
- MATCH EXISTING PAVEMENT MARKINGS ON EXISTING ROADS. ALL EXISTING PAVEMENT MARKINGS THAT ARE IN CONFLICT WITH PROPOSED MARKINGS SHALL BE REMOVED BY HOT-BLASTING. EXISTING SIGNS SHALL REMAIN UNLESS NOTED OTHERWISE.
- ALL STOP SIGN LOCATIONS SHALL BE NOTED ON THE PLANS. STOP SIGNS SHALL BE PLACED AT THE CENTER OF THE TRAFFIC LANE. AS AN ALTERNATIVE, ROADS WITH PAVEMENT BRICK SURFACES MAY UTILIZE CONTRASTING COLORED PAVEMENT MARKINGS TO INDICATE STOP LOCATIONS.
- THE CONTRACTOR SHALL FURNISH AND INSTALL STREET NAME SIGNS IN ACCORDANCE WITH LOCAL DEVELOPMENT STANDARDS. IF POSSIBLE, STREET NAME SIGNAGE TO BE ATOP ALL STOP SIGNS. DEAD END STREETS SHALL INCLUDE A W14-2P "NO OUTLET" SIGN.
- THE CONTRACTOR SHALL PROVIDE AND INSTALL BLUE / BLUE REFLECTIVE PAVEMENT MARKERS AT THE CENTER OF THE TRAFFIC LANE NEAREST ALL PROPOSED FIRE HYDRANTS.
- ALL ROADWAY SIGNING AND PAVEMENT MARKINGS, STREET NAME SIGNS, ETC. (EXCLUDING PROJECT IDENTIFICATION SIGNAGE) ARE TO BE INCLUDED IN THE LUMP SUM PRICE FOR SIGNING AND MARKING UNLESS A DETAILED BID QUANTITY BREAKDOWN IS PROVIDED.
- ANY EXISTING SIGN TO REMAIN THAT IS RELOCATED OR DISTURBED DURING CONSTRUCTION SHALL BE RESET TO CURRENT F.D.O.T. STANDARD INDEXES 700-001 AND 700-101 FOR HEIGHT, OFFSET AND METHOD OF INSTALLATION. ANY SIGNS DAMAGED BY CONTRACTOR SHALL BE REPLACED AT THE EXPENSE OF THE CONTRACTOR.
- ALL SIGNS THAT ARE EMBEDDED IN CONCRETE OR ASPHALT SHALL BE INSTALLED IN A F.D.O.T. APPROVED PIPE SLEEVE.

**NOTE: NOT ALL GENERAL NOTES, ABBREVIATIONS, SYMBOLS OR OTHER STANDARDS SHOWN ON THIS SHEET MAY BE APPLICABLE TO THIS PROJECT.**

## Barraco and Associates, Inc.

CIVIL ENGINEERING - LAND SURVEYING  
LAND PLANNING

[www.barraco.net](http://www.barraco.net)  
2271 MCGREGOR BLVD., SUITE 100  
FORT MYERS, FLORIDA 33902-2800  
PHONE (239) 461-3170  
FAX (239) 461-3169

FLORIDA CERTIFICATES OF AUTHORIZATION  
ENGINEERING 7995 - SURVEYING LB-6940

PREPARED FOR

## LENNAR

LENNAR HOMES  
10471 BEN C PLATT / 6 MILE  
CYPRESS PARKWAY  
FORT MYERS, FLORIDA 33966

PHONE (239) 278-1177  
FAX (239) 931-4749

### PROJECT DESCRIPTION

## WildBlue

LEE COUNTY, FLORIDA

ENGINEER OF RECORD

TIMOTHY B. GAVIN, P.E., FOR THE FIRM  
FLORIDA P.E. NO. 70675 - TIMG@BARRACO.NET

DRAWING NOT VALID WITHOUT SEAL, SIGNATURE AND DATE

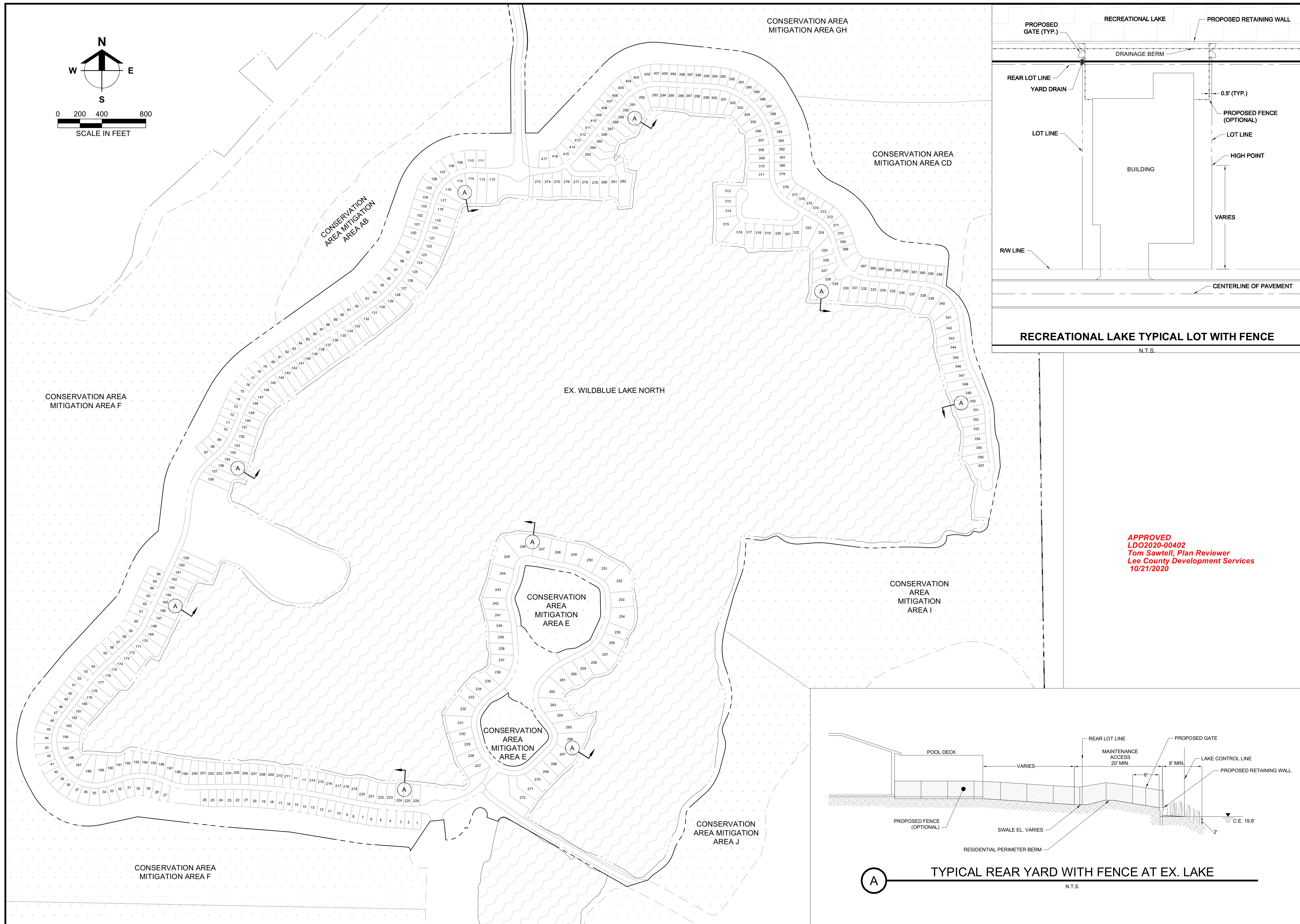
© COPYRIGHT 2020, BARRACO AND ASSOCIATES, INC.  
REPRODUCTION, CHANGES OR ASSIGNMENTS ARE PROHIBITED

FILE NAME: 23675.DWG

LOCATION: J:\23675\DWG\DO-LDO (09-23-20)

&lt;





<div>Barraco</div> <div>and Associates, Inc.</div>	
CIVIL ENGINEERING - LAND SURVEYING LAND PLANNING	
www.barraco.net	
2271 MCGREGOR BLVD., SUITE 100 POST OFFICE DRAWER 2800 FORT MYERS, FLORIDA 33902-2800 PHONE (239) 461-3170 FAX (239) 461-3169	
FLORIDA CERTIFICATES OF AUTHORIZATION ENGINEERING 7995 - SURVEYING LB-6940	
PREPARED FOR	
<div>Lennar®</div>	
LENNAR HOMES 10471 BEN C PRATT / 6 MILE CYPRESS PARKWAY FORT MYERS, FLORIDA 33966	
PHONE (239) 278-1177 FAX (239) 931-4749	
PROJECT DESCRIPTION	
<div>WildBlue</div>	
LEE COUNTY, FLORIDA	
ENGINEER OF RECORD	
TIMOTHY B. GAVIN, P.E., FOR THE FIRM FLORIDA P.E. NO. 70675 - TIMG@BARRACO.NET	
DRAWING NOT VALID WITHOUT SEAL, SIGNATURE AND DATE © COPYRIGHT 2020, BARRACO AND ASSOCIATES, INC. REPRODUCTION, CHANGES OR ASSIGNMENTS ARE PROHIBITED	
FILE NAME	23675LDO10.DWG
LOCATION	J:\23675\DWG\DO-LDO (09-23-20)\I
LOT DATE	FRI, 10-16-2020 - 8:14 AM
PLOT BY	SCOTT WHEELER JR
CROSS REFERENCED DRAWINGS	
BASE PLAN = 23675A00.DWG SURVEY = 23372500.DWG	
PLAN REVISIONS	
PLAN STATUS	
LDO REVIEW PLANS 10-16-2020	
SITE, TYPICAL SECTIONS AND DETAILS	
PROJECT / FILE NO.	SHEET NUMBER
23675	3.0