

# DEVELOPMENT ORDER MINOR CHANGE #8

## FOR

# WILDBLUE

## PHASE 1 RESIDENTIAL

PART OF SECTIONS 7,8,17,18,19,20, TOWNSHIP 46 SOUTH, RANGE 26 EAST  
FORT MYERS, LEE COUNTY, FLORIDA

### PROJECT DATA

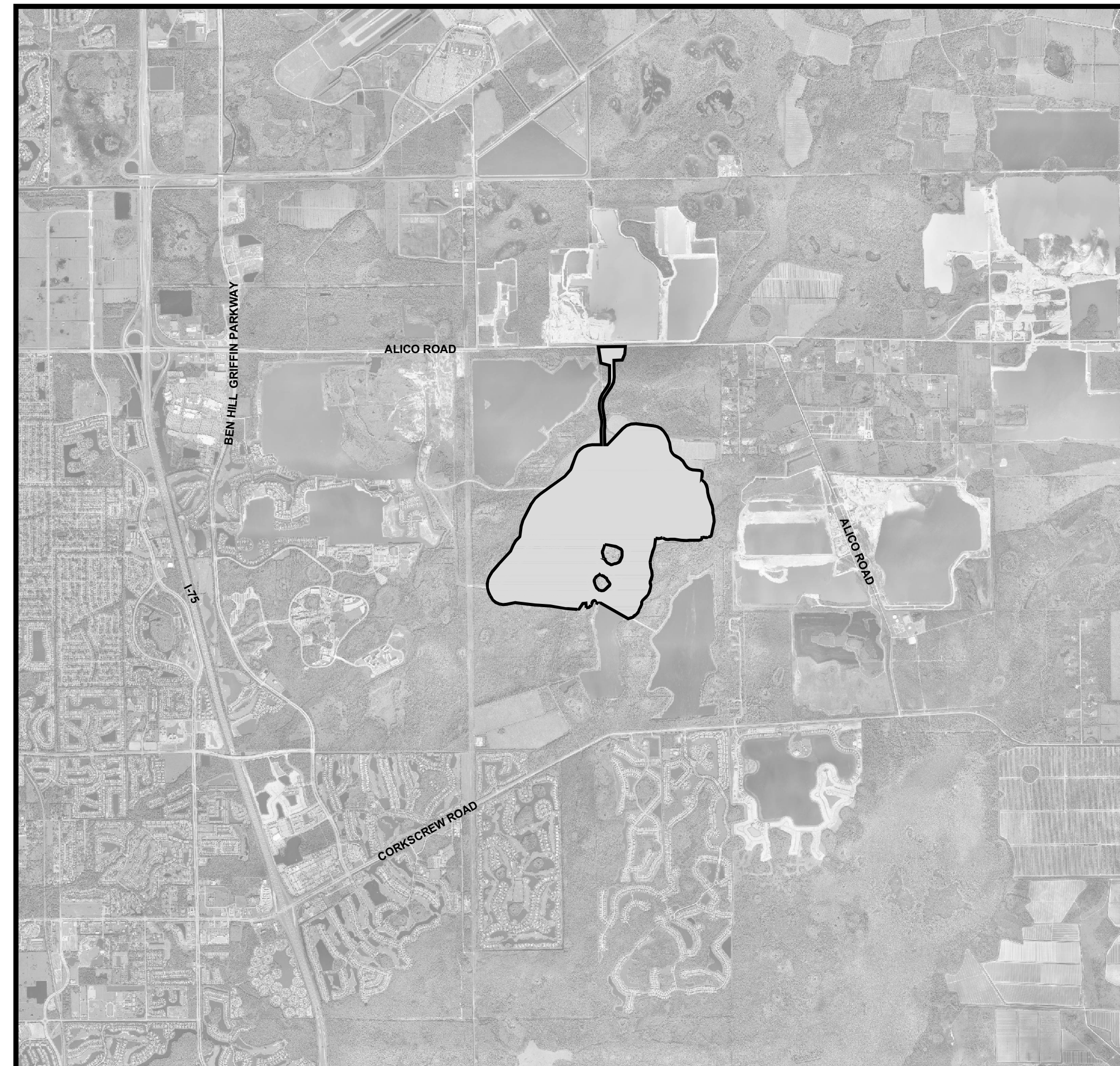
<b>SITE ADDRESS</b>	<b>PROJECT DATUM</b>	
13500 ALICO ROAD FT. MYERS, FLORIDA 33913	STATE PLANE FLORIDA WEST ZONE NAD 1983 (NSRS2007) NORTH AMERICAN VERTICAL DATUM (NAVD) 1988	
<b>ZONING</b>	<b>RECORD PLAT</b>	
MPD (RESOLUTION Z-15-021)	PLT2017-00019 INSTRUMENT NO.: 2017000216031	
<b>FLOOD ZONE</b>	<b>STRAP NUMBERS</b>	
ACCORDING TO FIRM 12071C0625 EFFECTIVE DATE AUGUST 28, 2008, THE SUBJECT PARCEL IS NOT LOCATED WITHIN A SPECIAL FLOOD HAZARD AREA (PANEL NOT PRINTED)	17-46-26-L1-070F1.0000 17-46-26-L1-070F1.0010	
<b>PERMIT REQUIREMENTS</b>		
<b>AGENCY</b>	<b>STATUS</b>	<b>NOTES</b>
S. FLORIDA WATER MANAGEMENT DISTRICT	APPROVED	36-05075-P
LEE COUNTY DEVELOPMENT ORDER	APPROVED	DOS2017-00103
FLORIDA DEPARTMENT OF HEALTH	PENDING	-
FLORIDA DEPT. OF ENVIRONMENTAL PROTECTION	PENDING	-
F.D.O.T. CONNECTION PERMIT	N/A	-
F.D.O.T. DRAINAGE CONNECTION PERMIT	N/A	-
F.D.O.T. UTILITY PERMIT	N/A	-
ARMY CORPS OF ENGINEERS	APPROVED	SAJ-2003-10995
F.D.E.P. NOTICE OF INTENT	PENDING	-
<b>NOTE: CONTRACTOR MUST OBTAIN AND KEEP ON FILE A COPY OF ALL PERMITS REQUIRED PRIOR TO COMMENCEMENT OF ANY CONSTRUCTION ACTIVITY</b>		

### DESIGN TEAM

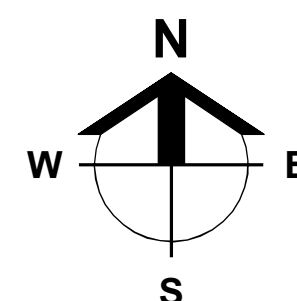
<b>PROJECT ENGINEER</b>	<b>PROJECT MANAGEMENT</b>
TIMOTHY B. GAVIN, P.E.	CHRIS VAN BUSKIRK
<b>DESIGN ENGINEER</b>	<b>PROJECT SURVEYOR</b>
TIMOTHY B. GAVIN, P.E.	SCOTT A. WHEELER, PSM
<b>LEAD DESIGN TECHNICIAN</b>	<b>SITE PLANNING</b>
GUY W. SAPEN	JENNIFER SAPEN, AICP
<b>DESIGN STAFF</b>	<b>LAND PLANNING</b>
SCOTT A. WHEELER, JR.	JENNIFER SAPEN, AICP
<b>QUALITY CONTROL</b>	<b>RECORD DRAWINGS</b>
CHRIS VAN BUSKIRK	

THESE PLANS MAY HAVE BEEN MODIFIED IN SIZE BY REPRODUCTION.  
THIS MUST BE CONSIDERED WHEN OBTAINING SCALED DATA.

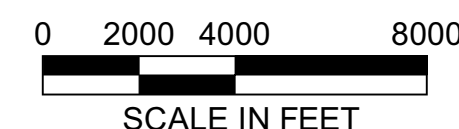
ALL DIMENSIONS ARE IN FEET.



PROJECT  
LOCATION



LOCATION MAP



SCALE IN FEET



### INDEX OF DRAWINGS

ENGINEER OF RECORDS SIGNATURE AND SEAL APPLY TO THE FOLLOWING PLAN SHEETS, EXCLUDING ANY SUPPLEMENTS:

SHEET	DESCRIPTION	XREF	DRAWING NAME
1.0	COVER SHEET AND LOCATION MAP	B	23675A01.DWG
2.0	STANDARD NOTES, LEGEND, AND ABBREVIATIONS	A	23675A02.DWG
3.0	AERIAL PHOTOGRAPH AND EXISTING CONDITIONS PLAN	B,D	23675A06.DWG
4.0	MASTER SITE AND PHASING PLAN	A	23675A10.DWG
4.1	MODEL HOME PARKING PLAN	A	23675A10B.DWG
5.0	MASTER DRAINAGE PLAN	A	23675A11.DWG
6.0	MASTER UTILITY PLAN	A	23675A12.DWG
7.0-7.18	DETAILED PAVING, GRADING, AND DRAINAGE PLANS	A	23675A15.DWG
8.0-8.4	TYPICAL SECTIONS	-	23675A18.DWG
9.0	PLAN AND PROFILE KEY SHEET	A	23675A29.DWG
10.0-10.5	PLAN AND PROFILES - WILDBLUE BLVD. ENTRANCE ROAD (STA. 800)	A,C	23675A30A.DWG
11.0-11.15	PLAN AND PROFILES - WILDBLUE BLVD. (STA. 100-200)	A,C	23675A30B.DWG
12.0-12.6	PLAN AND PROFILES - BLUE EYE LOOP (STA. 200)	A,C	23675A30C.DWG
13.0-13.2	PLAN AND PROFILES - BLUE BREEZE DR. (STA. 300)	A,C	23675A30D.DWG
14.0	PLAN AND PROFILES - AMENITY ENTRANCE (700)	A,C	23675A30E.DWG
15.0	PLAN AND PROFILES - WILDBLUE BLVD. ROUNDABOUT (STA. 400)	A,C	23675A30F.DWG
16.0-16.2	PLAN AND PROFILES - LIFT STATIONS (7891, 7892, 7893)	A,C	23675A30G.DWG
17.0-17.2	CONTROL STRUCTURE DETAILS	-	23675A42-23675A42A.DWG
18.0-18.2	TYPICAL CONSTRUCTION DETAILS	-	23675A44.DWG
19.0	EROSION CONTROL DETAILS	-	23675A50.DWG
20.0	STORMWATER POLLUTION PREVENTION PLAN	A	23675A52.DWG
21.0-21.3	UTILITY DETAILS	-	23675A70.DWG
22.0-22.3	LIFT STATION 7891, 7892, & 7893 DETAILS	-	23675A71.DWG
23.0-23.2	OFFSITE TURN LANES ALICO RD.	A	23675A90.DWG
24.0	DEWATERING PLANS	A	23675A93.DWG
26.0-26.10	STREET LIGHTING PLANS	A	23675A96.DWG
27.0	ALICO ROAD M.O.T. PLANS	A,E	23675A97.DWG

Minor Change #8

APPROVED  
DOS2017-00103  
Tom Sawtell, Plan Reviewer  
Lee County Development Services  
6/4/2021

CROSS-REFERENCED DRAWINGS:

XREF	DESCRIPTION	DRAWING NAME
A	BASE LINEWORK PLAN	23675A00.DWG
B	AERIAL PHOTOGRAPH	IMAGE_1.JPG
C	PROFILE BASE PLAN	23675A00P.DWG
D	SURVEY	23372S00.DWG
E	ALICO M.O.T. PLAN	23675M00.DWG

PLAN STATUS

MINOR CHANGE #8  
03-16-2021

**Barraco**  
and Associates, Inc.  
CIVIL ENGINEERING - LAND SURVEYING  
LAND PLANNING

www.barraco.net

2271 MCGREGOR BLVD., SUITE 100  
POST OFFICE DRAWER 2800  
FORT MYERS, FLORIDA 33902-2800  
PHONE (239) 461-3170  
FAX (239) 461-3169

FLORIDA CERTIFICATES OF AUTHORIZATION  
ENGINEERING 7995 - SURVEYING LB-6940

PREPARED FOR

**LENNAR**

LENNAR HOMES  
10471 BEN C PRATT / 6 MILE  
CYPRESS PARKWAY  
FORT MYERS, FLORIDA 33966

PHONE (239) 278-1177  
FAX (239) 931-4749

PROJECT DESCRIPTION

**WildBlue**

LEE COUNTY, FLORIDA

ENGINEER OF RECORD

TIMOTHY B. GAVIN, P.E., FOR THE FIRM  
FLORIDA P.E. NO. 70675 - TIMG@BARRACO.NET

Digitally signed  
by Timothy B.  
Gavin, P.E. 70675  
Date: 2021.04.21  
09:23:46 -04'00'

This item has been electronically signed and sealed by  
Timothy B. Gavin on the date adjacent to the seal using a SRA  
authentication code.

Printed copies of this document are not considered signed  
and sealed and the SRA authentication code must be verified  
on any electronic copies.

DRAWING NOT VALID WITHOUT SEAL, SIGNATURE AND DATE  
(C) COPYRIGHT 2021, BARRACO AND ASSOCIATES, INC.  
REPRODUCTION, CHANGES OR ASSIGNMENTS ARE PROHIBITED

FILE NAME J:\23675A01.DWG

LOCATION J:\23675\DWG\DO\

PLOT DATE TUE. 3-30-2021 - 2:37 PM

PLOT BY SCOTT WHEELER JR

CROSS REFERENCED DRAWINGS

MASTER = BA1-COVER-1.DWG

PLAN REVISIONS

DATE	DESCRIPTION	BY
04-28-20	MINOR CHANGE #7	10
06-05-20	D.O. AMENDMENT #3 CHANGES	11
02-22-21	MINOR CHANGE #8	12
03-16-21	MINOR CHANGE #8 COMMENTS	13
12-24-19	MINOR CHANGE #4	6
01-31-20	MINOR CHANGE #5	7
02-26-20	LCU COMMENTS DATED 02-25-20	8
03-06-20	MINOR CHANGE #6	9

PLAN STATUS

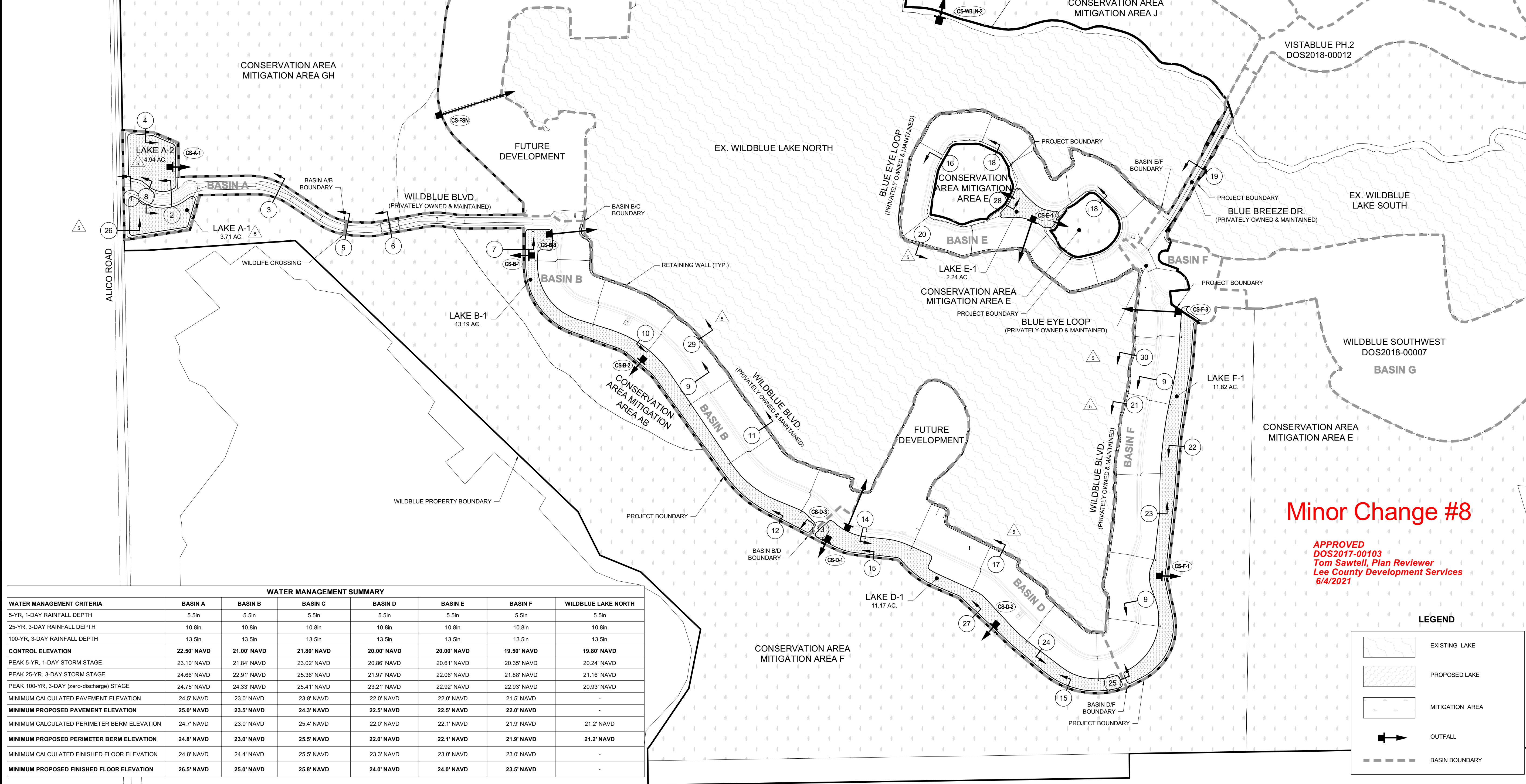
MINOR CHANGE #8  
03-16-2021

COVER SHEET  
AND  
LOCATION MAP

PROJECT / FILE NO.	SHEET NUMBER
23675	1.0



- GENERAL DRAINAGE NOTES:
1. THE LENGTH OF STORM DRAIN PIPES SHOWN ON PLANS ARE APPROXIMATE AND HAVE BEEN MEASURED FROM THE INSIDE FACE OF STRUCTURE.
  2. THE CONTRACTOR IS REQUIRED TO ADJUST ALL EXISTING AND PROPOSED VALVE BOXES, MANHOLE RIMS, GRATES, ETC. AS REQUIRED TO MATCH PROPOSED GRADES.
  3. ALL UNPAVED AREAS DISTURBED DURING CONSTRUCTION SHALL BE SEEDED AND MULCHED UNLESS NOTED OTHERWISE. WATERING WILL BE REQUIRED TO OBTAIN STABILIZATION / GROWTH AND TO PROVIDE DUST CONTROL.
  4. EXISTING OFF-SITE DRAINAGE PATTERNS SHALL BE MAINTAINED DURING CONSTRUCTION.
  5. SWALE PROFILES SHOWN ARE TO TOP OF SOD. CONTRACTOR TO ADJUST SWALE GRADING ACCORDINGLY.
  6. SOD A 24" STRIP BEHIND ALL CONCRETE CURB AND VALLEY GUTTER AND AT THE EDGE OF ANY PAVEMENT. IN ADDITION TO LOCATIONS INDICATED IN THE TYPICAL SECTIONS, ALL SLOPES THAT ARE STEEPER THAN 4:1 SHALL BE SODDED, UNLESS INDICATED OTHERWISE. REMAINING AREAS WITHIN THE DISTURBED AREA SHALL BE SEEDED, FERTILIZED AND MULCHED.
  7. THE CONTRACTOR SHALL REMOVE ALL UNSUITABLE MATERIAL ENCOUNTERED FROM FILL AREAS PRIOR TO PLACEMENT OF FILL. ALL UNSUITABLE MATERIAL EXCAVATED SHALL BE STOCKPILED OR REMOVED AS DIRECTED BY OWNER.
  8. YARD DRAINS SHALL BE ADDED IN GREEN AREAS AS NECESSARY AT THE DIRECTION OF THE LANDSCAPE ARCHITECT OR ENGINEER.
  9. FOR LAKE BANKS, A MINIMUM OF 95 PERCENT OF THE MAXIMUM DRY DENSITY (MODIFIED PROCTOR) FOR EMBANKMENTS THAT WILL SUPPORT STRUCTURES, AND 90 PERCENT OF MAXIMUM DRY DENSITY (MODIFIED PROCTOR) FOR OTHER EMBANKMENTS IN ACCORD WITH ASTM D1557 MUST BE OBTAINED [10-329(D)(4)(A)].
  10. THE TOP OF ALL ENDWALLS SHALL BE NO HIGHER THAN 30" BELOW THE LAKE CONTROL ELEVATION. THE CONTRACTOR SHALL REVIEW PROPOSED STRUCTURE LOCATIONS WITH THE ENGINEER AFTER STAKEOUT AND BEFORE COMMENCING CONSTRUCTION. ALL DRAINAGE STRUCTURES TO BE LOCATED ON THE LAKE BANK SHALL BE FIELD ADJUSTED SO AS TO INSET THE STRUCTURE, TO THE GREATEST EXTENT POSSIBLE, IN THE LAKE BANK.



WATER MANAGEMENT SUMMARY							
WATER MANAGEMENT CRITERIA	BASIN A	BASIN B	BASIN C	BASIN D	BASIN E	BASIN F	WILDBLUE LAKE NORTH
5-YR, 1-DAY RAINFALL DEPTH	5.5in	5.5in	5.5in	5.5in	5.5in	5.5in	5.5in
25-YR, 3-DAY RAINFALL DEPTH	10.8in	10.8in	10.8in	10.8in	10.8in	10.8in	10.8in
100-YR, 3-DAY RAINFALL DEPTH	13.5in	13.5in	13.5in	13.5in	13.5in	13.5in	13.5in
CONTROL ELEVATION	22.50' NAVD	21.00' NAVD	21.80' NAVD	20.00' NAVD	20.00' NAVD	19.50' NAVD	19.80' NAVD
PEAK 5-YR, 1-DAY STORM STAGE	23.10' NAVD	21.84' NAVD	23.02' NAVD	20.86' NAVD	20.61' NAVD	20.35' NAVD	20.24' NAVD
PEAK 25-YR, 3-DAY STORM STAGE	24.66' NAVD	22.91' NAVD	25.36' NAVD	21.97' NAVD	22.06' NAVD	21.88' NAVD	21.16' NAVD
PEAK 100-YR, 3-DAY (zero-discharge) STAGE	24.75' NAVD	24.33' NAVD	25.41' NAVD	23.21' NAVD	22.92' NAVD	22.93' NAVD	20.93' NAVD
MINIMUM CALCULATED PAVEMENT ELEVATION	24.5' NAVD	23.0' NAVD	23.8' NAVD	22.0' NAVD	22.0' NAVD	21.5' NAVD	-
MINIMUM PROPOSED PAVEMENT ELEVATION	25.0' NAVD	23.5' NAVD	24.3' NAVD	22.5' NAVD	22.5' NAVD	22.0' NAVD	-
MINIMUM CALCULATED PERIMETER BERM ELEVATION	24.7' NAVD	23.0' NAVD	25.4' NAVD	22.0' NAVD	22.1' NAVD	21.9' NAVD	21.2' NAVD
MINIMUM PROPOSED PERIMETER BERM ELEVATION	24.8' NAVD	23.0' NAVD	25.5' NAVD	22.0' NAVD	22.1' NAVD	21.9' NAVD	21.2' NAVD
MINIMUM CALCULATED FINISHED FLOOR ELEVATION	24.8' NAVD	24.4' NAVD	25.5' NAVD	23.3' NAVD	23.0' NAVD	23.0' NAVD	-
MINIMUM PROPOSED FINISHED FLOOR ELEVATION	26.5' NAVD	25.0' NAVD	25.8' NAVD	24.0' NAVD	24.0' NAVD	23.5' NAVD	-

**Barraco**  
and Associates, Inc.  
CIVIL ENGINEERING - LAND SURVEYING  
LAND PLANNING  
[www.barraco.net](http://www.barraco.net)  
2271 MCGREGOR BLVD., SUITE 100  
POST OFFICE DRAWER 2800  
FORT MYERS, FLORIDA 33902-2800  
PHONE (239) 461-3170  
FAX (239) 461-3169  
FLORIDA CERTIFICATES OF AUTHORIZATION  
ENGINEERING 7995 - SURVEYING LB-6940

PREPARED FOR  
**LENNAR**  
  
LENNAR HOMES  
10471 BEN C PRATT / 6 MILE  
CYPRESS PARKWAY  
FORT MYERS, FLORIDA 33966  
  
PHONE (239) 278-1177  
FAX (239) 931-4749

PROJECT DESCRIPTION  
**WildBlue**  
  
LEE COUNTY, FLORIDA

ENGINEER OF RECORD  
TIMOTHY B. GAVIN, P.E., FOR THE FIRM  
FLORIDA P.E. NO. 70675 - TIMG@BARRACO.NET

DRAWING NOT VALID WITHOUT SEAL, SIGNATURE AND DATE  
© COPYRIGHT 2021, BARRACO AND ASSOCIATES, INC.  
REPRODUCTION, CHANGES OR ASSIGNMENTS ARE PROHIBITED

FILE NAME J:\23675A11.DWG  
LOCATION J:\23675A00\DWG\DO  
PLOT DATE TUE, 3-30-2021 - 2:38 PM  
PLOT BY SCOTT WHEELER JR

CROSS REFERENCED DRAWINGS  
BASEPLAN = 23675A00.DWG  
SURVEY = 23372500.DWG

PLAN REVISIONS  

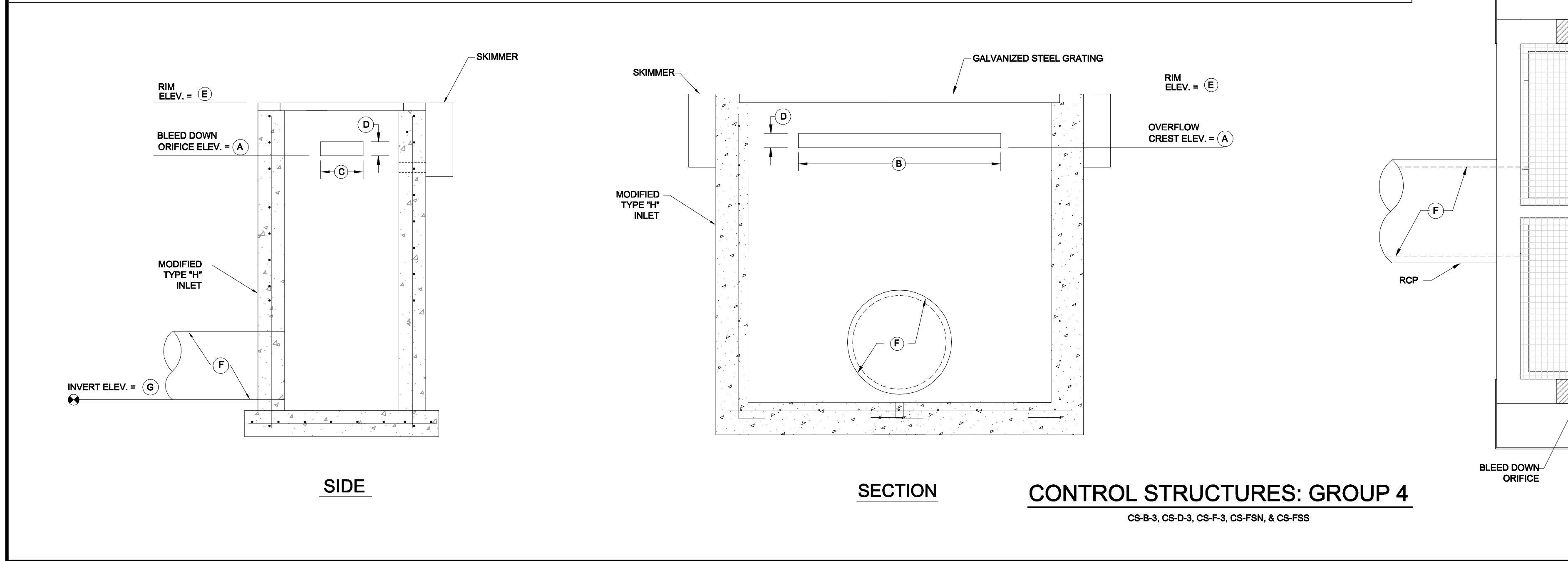
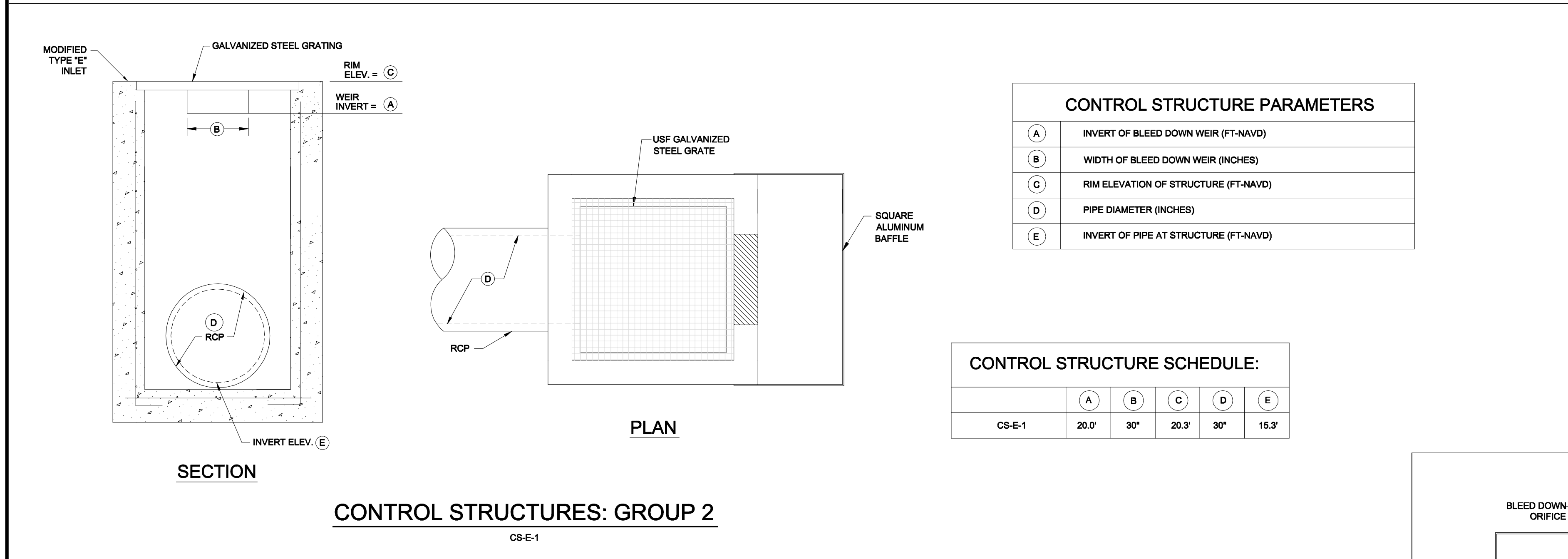
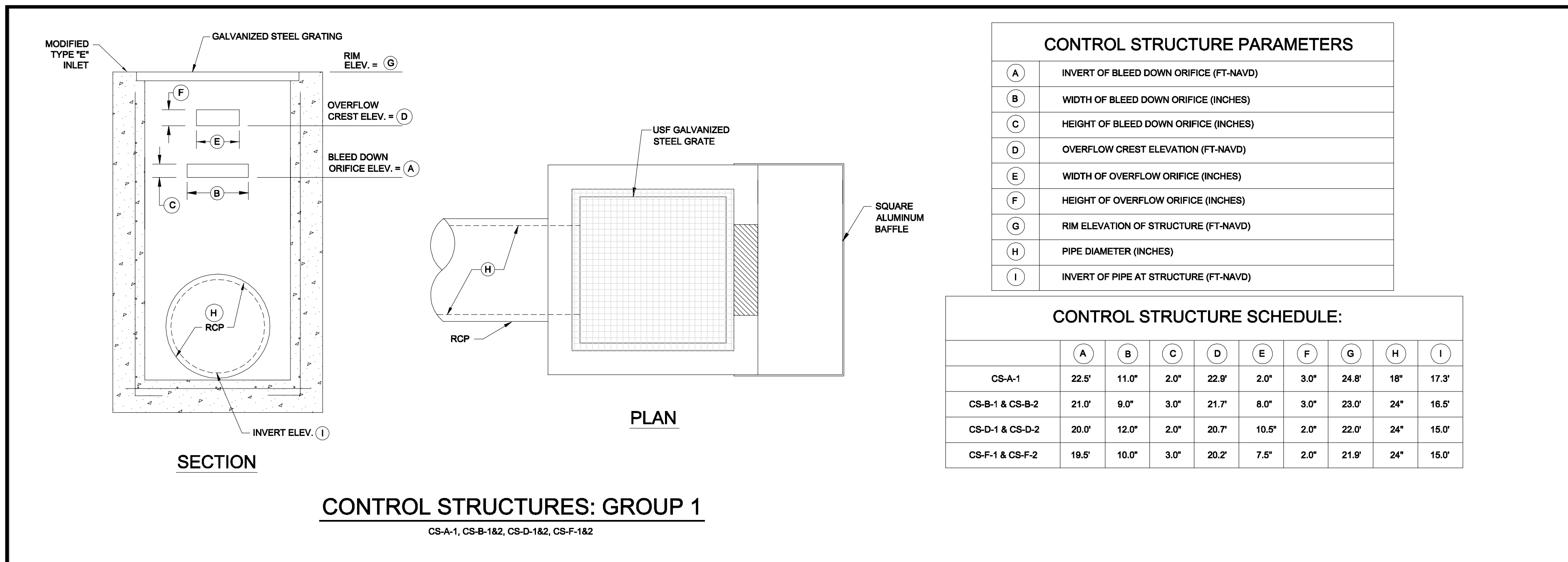
DATE	DESCRIPTION	BY
06-20-19	MINOR CHANGE	Δ
11-06-19	D.O. AMENDMENT #2 CHANGES	Δ
02-22-21	MINOR CHANGE #8	Δ

PLAN STATUS  
MINOR CHANGE #8  
03-16-2021

MASTER DRAINAGE PLAN

PROJECT / FILE NO. 23675 SHEET NUMBER 5.0





**SECTION X-X**

EXISTING GROUND

6"-8" RIP RAP

H

GEOTEXTILE FABRIC

PIPE

FLOW

DIA.

NOTE:  
MINIMUM "H" SHALL BE AT LEAST 1/3 PIPE DIAMETER

ANY TEMPORARY IMPACTS TO WETLAND / PRESERVE AREAS SHALL BE RESTORED TO PRE-DEVELOPMENT CONDITION IMMEDIATELY UPON INSTALLATION OF SPREADER SWALE

**SPREADER SWALE**

N.T.S.

VARIES

3'

X

X

FLOW

PIPE

**Minor Change #8**

APPROVED  
DOS2017-00103  
Tom Sawtell, Plan Reviewer  
Lee County Development Services  
6/4/2021

**Barraco and Associates, Inc.**

CIVIL ENGINEERING - LAND SURVEYING  
LAND PLANNING

[www.barraco.net](http://www.barraco.net)

2271 MCGREGOR BLVD., SUITE 100  
POST OFFICE DRAWER 2800  
FORT MYERS, FLORIDA 33902-2800  
PHONE (239) 461-3170  
FAX (239) 461-3169

FLORIDA CERTIFICATES OF AUTHORIZATION  
ENGINEERING 7995 - SURVEYING LB-6940

PREPARED FOR

**LENNAR**

LENNAR HOMES  
10471 BEN C PRATT / 6 MILE  
CYPRESS PARKWAY  
FORT MYERS, FLORIDA 33966

PHONE (239) 278-1177  
FAX (239) 931-4749

PROJECT DESCRIPTION

**WildBlue**

LEE COUNTY, FLORIDA

ENGINEER OF RECORD  
TIMOTHY B. GAVIN, P.E., FOR THE FIRM  
FLORIDA P.E. NO. 70675 - TIMG@BARRACO.NET

DRAWING NOT VALID WITHOUT SEAL, SIGNATURE AND DATE  
© COPYRIGHT 2021, BARRACO AND ASSOCIATES, INC.  
REPRODUCTION, CHANGES OR ASSIGNMENTS ARE PROHIBITED

FILE NAME: J:\23675A\DWG\DWG01

LOCATION: J:\23675A\DWG\DWG01

PLOT DATE: TUE. 3-30-2021 - 2:39 PM

PLOT BY: SCOTT WHEELER JR

CROSS REFERENCED DRAWINGS  
BASEPLAN = 23675A00.DWG

PLAN REVISIONS

NO.	DATE	DESCRIPTION
11-12-18	D.O. AMENDMENT #1 CHANGES	

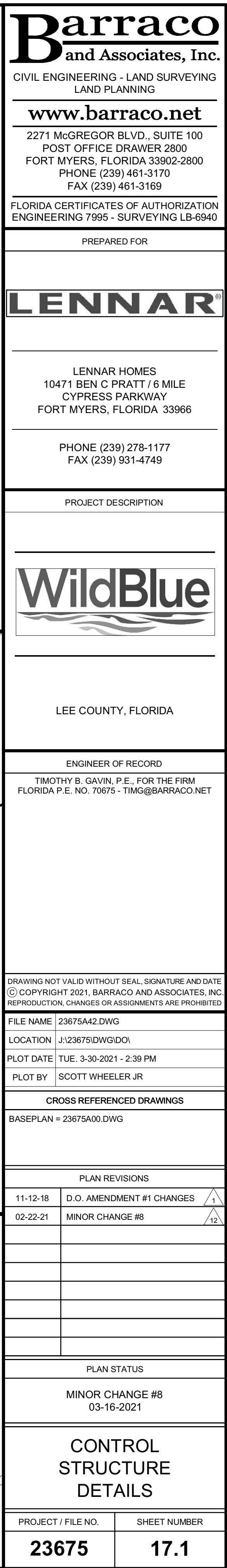
PLAN STATUS

MINOR CHANGE #8  
03-16-2021

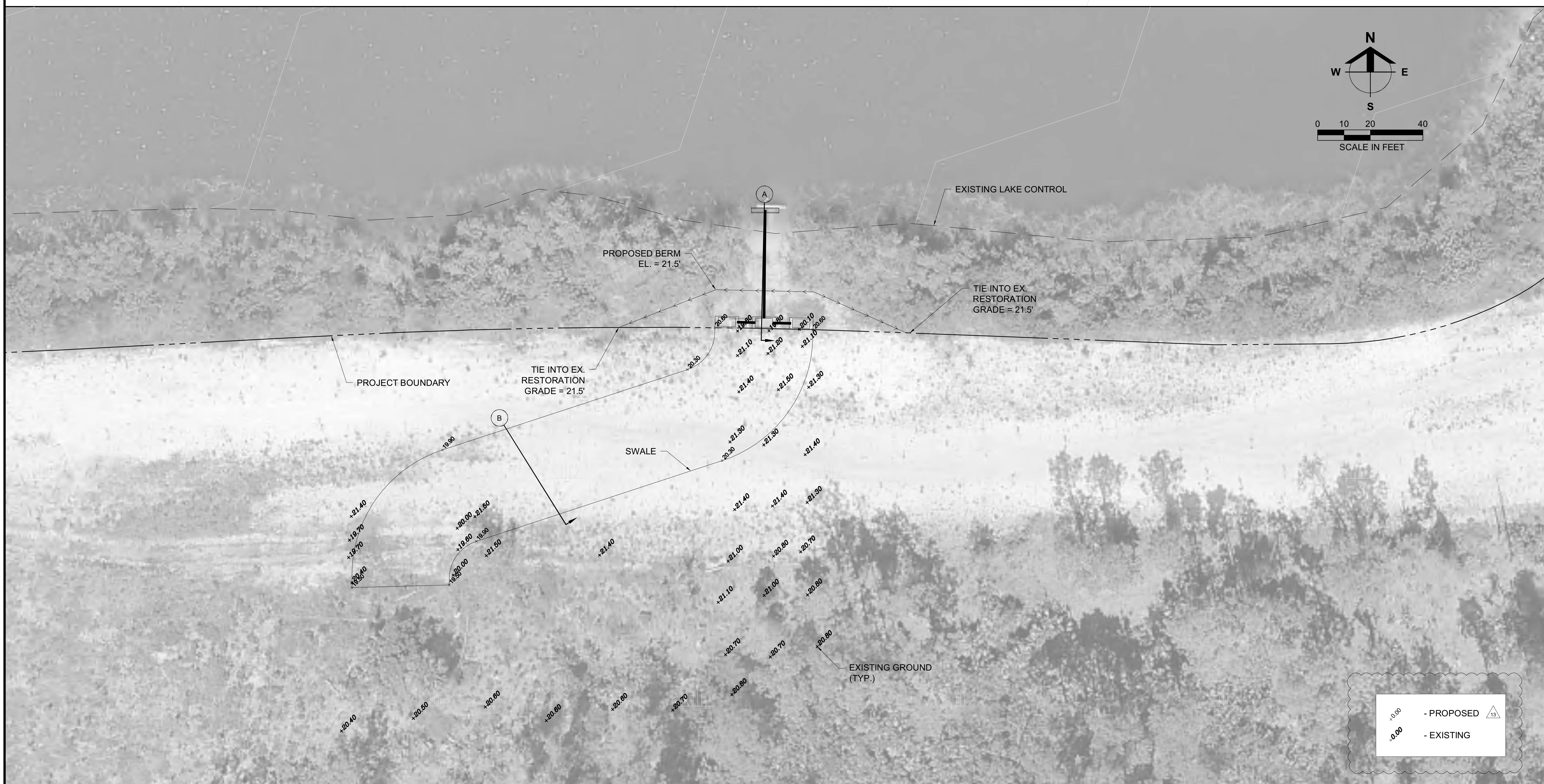
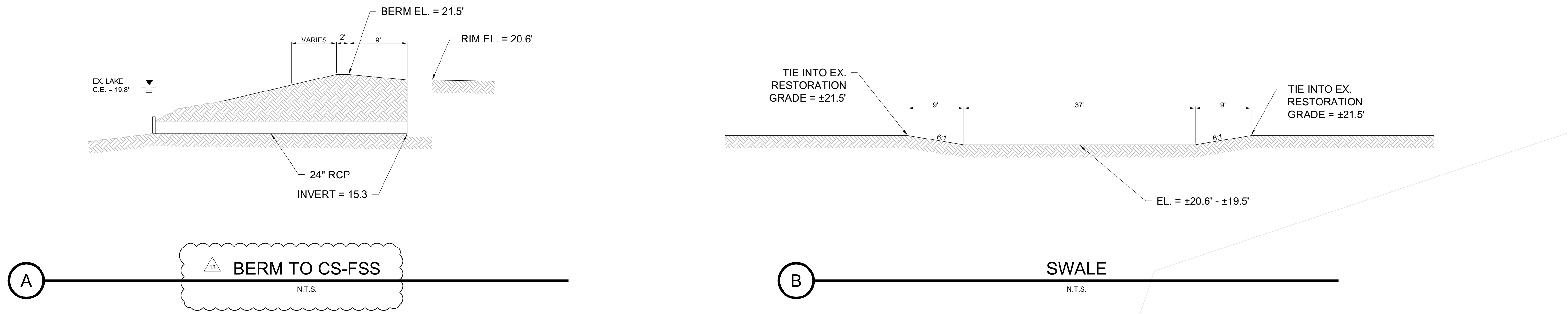
**CONTROL STRUCTURE DETAILS**

PROJECT / FILE NO.	SHEET NUMBER
23675	17.0









**Barraco**  
and Associates, Inc.  
CIVIL ENGINEERING - LAND SURVEYING  
LAND PLANNING  
[www.barraco.net](http://www.barraco.net)  
2271 MCGREGOR BLVD., SUITE 100  
POST OFFICE DRAWER 2800  
FORT MYERS, FLORIDA 33902-2800  
PHONE (239) 461-3170  
FAX (239) 461-3169  
FLORIDA CERTIFICATES OF AUTHORIZATION  
ENGINEERING 7995 - SURVEYING LB-6940

PREPARED FOR

**LENNAR**  
  
LENNAR HOMES  
10471 BEN C PRATT / 6 MILE  
CYPRESS PARKWAY  
FORT MYERS, FLORIDA 33966  
  
PHONE (239) 278-1177  
FAX (239) 931-4749

PROJECT DESCRIPTION

**WildBlue**

LEE COUNTY, FLORIDA

ENGINEER OF RECORD  
TIMOTHY B. GAVIN, P.E., FOR THE FIRM  
FLORIDA P.E. NO. 70675 - TIMG@BARRACO.NET

DRAWING NOT VALID WITHOUT SEAL, SIGNATURE AND DATE  
© COPYRIGHT 2021, BARRACO AND ASSOCIATES, INC.  
REPRODUCTION, CHANGES OR ASSIGNMENTS ARE PROHIBITED

FILE NAME J:\23675\DWG\DWG

LOCATION J:\23675\DWG\DWG

PLOT DATE TUE. 3-30-2021 - 2:40 PM

PLOT BY SCOTT WHEELER JR

CROSS REFERENCED DRAWINGS

PLAN REVISIONS

DATE	DESCRIPTION	BY
02-22-21	MINOR CHANGE #8	12
03-16-21	MINOR CHANGE #8 COMMENTS	13

PLAN STATUS

MINOR CHANGE #8  
03-16-2021

**CONTROL STRUCTURE  
FSS  
BERM DETAIL**

PROJECT / FILE NO. 23675

SHEET NUMBER 17.2