

Andrea Douglas, RLA  
This item has been electronically signed and sealed by Andrea Douglas, RLA, using a SHA-1 authentication code. Printed copies of this document are not considered signed and sealed and the SHA-1 authentication code must be verified on any electronic copies.  
2020.01.17 16:13:19 -05'00'

# WILDBLUE

## PHASE 2

### DEVELOPMENT ORDER PLANS

ESTERO, LEE COUNTY, FLORIDA

### TABLE OF CONTENTS

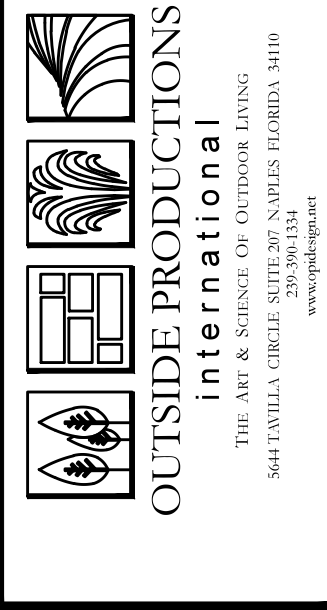
SHEET	DESCRIPTION
CM	KEY SHEET
CM1	CODE MINIMUM LANDSCAPE PLAN
CM2	CODE MINIMUM LANDSCAPE PLAN
CM3	CODE MINIMUM LANDSCAPE PLAN
CM4	CODE MINIMUM LANDSCAPE PLAN
CM5	CODE MINIMUM LANDSCAPE PLAN
CM6	CODE MINIMUM LANDSCAPE PLAN
CM7	CODE MINIMUM NOTES AND CALCULATIONS

**VEGETATION PERMIT REQUIRED  
PRIOR TO ANY SITE WORK**  
Protective barricades must be constructed and inspected prior to permit issuance. Please contact Division of Environmental Sciences (239) 533-8389.

**APPROVED**  
DOS2019-00120  
Tom Sawtell, Plan Reviewer  
Lee County Development Services  
5/4/2020

NOTICE:  
ALL DRAWING DISCREPANCIES MUST BE BROUGHT TO THE ATTENTION OF THE LANDSCAPE ARCHITECT, AND LA APPROVED SHOP DRAWINGS MUST BE OBTAINED PRIOR TO ORDERING MATERIALS OR BEGINNING CONSTRUCTION.

Job Number:  
002-19  
This plan and design are the property of Outside Productions, Inc. Plans shall not be copied or reproduced without the written consent of Outside Productions, Inc.

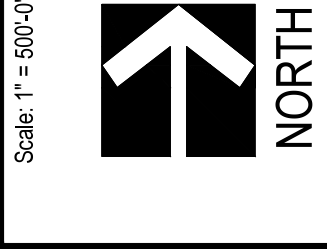


W. Patrick Trice, ASLA  
Landscape Architect #1481  
Andrea M. Douglas-Cook, ASLA  
Landscape Architect #62057

Date: 07-24-19  
Designed By: AMD  
Date: 07-24-19  
Drawn By: AMD

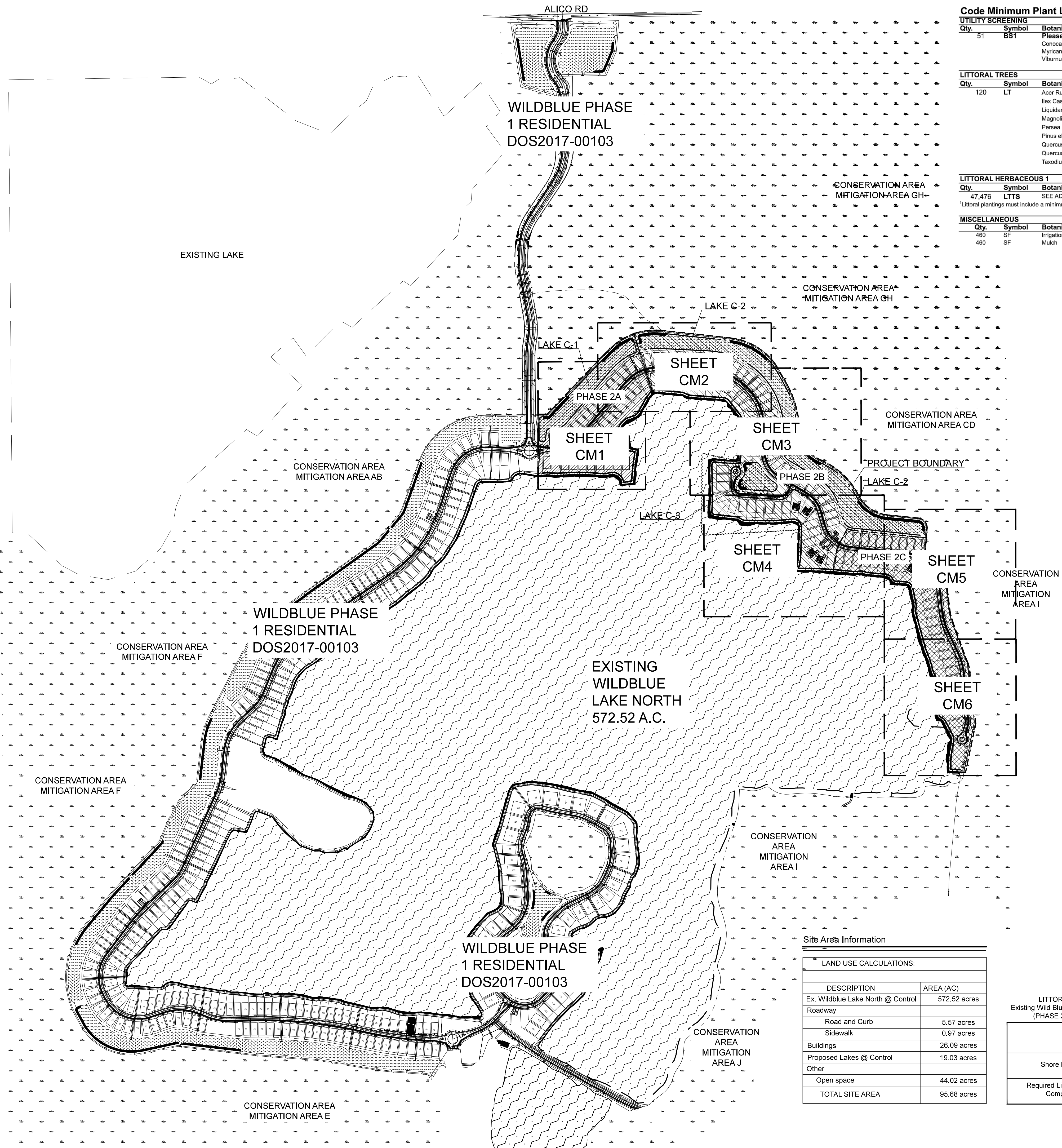
COVER SHEET

WILDBLUE  
PREPARED FOR: LENNAR HOMES  
ESTERO, LEE COUNTY, FLORIDA



Scale: 1" = 500'-0"





Code Minimum Plant List					
UTILITY SCREENING					
Qty.	Symbol	Botanical Name	Common Name	Specification	Native
51	BS1	Please choose Screening Shrubs from the following:			
		Conocarpus erectus sericeus	Silver Buttonwood	10 gallon, 48" oa ht	Y
		Myrcianthes fragrans	Simpson's Stopper	10 gallon, 48" oa ht	Y
		Viburnum obovatum	Walters Viburnum	10 gallon, 48" oa ht	Y
LITTORAL TREES					
Qty.	Symbol	Botanical Name	Common Name	Specification	Native
120	LT	Acer Rubrum	Red Maple	10' ht x 4' spr, 2" cal	as shown
		Ilex Casine	Dahoon Holly	10' ht x 4' spr, 2" cal	as shown
		Liquidambar Styraciflua	Sweetgum	10' ht x 4' spr, 2" cal	as shown
		Magnolia virginiana	Sweet Bay Magnolia	10' ht x 4' spr, 2" cal	as shown
		Persea palustris	Swamp Bay	10' ht x 4' spr, 2" cal	as shown
		Pinus eliotii 'densa'	South Florida Slash Pine	10' ht x 4' spr, 2" cal	as shown
		Quercus laurifolia	Laurel Oak	10' ht x 4' spr, 2" cal	as shown
		Quercus virginiana	Live Oak	10' ht x 4' spr, 2" cal	as shown
		Taxodium Distichum	Bald Cypress	10' ht x 4' spr, 2" cal	as shown
LITTORAL HERBACEOUS 1					
Qty.	Symbol	Botanical Name	Common Name	Specification	Native
47,476	LTTS	SEE ADD PLANT SPECIES LIST BY ZONES, BELOW		2" Liner	Y
*Littoral plantings must include a minimum of four different native herbaceous plant species.					
MISCELLANEOUS					
Qty.	Symbol	Botanical Name	Common Name	Specification	Native
460	SF	Irrigation	SEE PLANS OR SPECS	To be field verified by contractor.	
460	SF	Mulch	CocoBay	2" thick	

LITTORAL PLANTING SPECIES LIST <sup>1</sup>			
Common Name	Scientific Name	Minimum Container Size	Planting Density (On Center)
Zone 1 – Herbaceous Plantings			
Blue Maidencane	<i>Amphicarpum muhlenbergianum</i>	BR	2 ft.
Cordgrass	<i>Spartina bakeri</i>	BR	2 ft.
Golden canna	<i>Canna flaccida</i>	BR	2 ft.
Gulfdune Paspalum	<i>Paspalum monostachyum</i>	2 in.	2 ft.
Maidencane	<i>Panicum hemitomon</i>	BR	2 ft.
Muhly grass	<i>Muhlenbergia capillaris</i>	2 in.	2 ft.
Sawgrass	<i>Cladium jamaicense</i>	2 in.	2 ft.
Soft rush	<i>Juncus effusus</i>	BR	2 ft.
Swamp lily	<i>Crinum americanum</i>	BR	2 ft.
Water hyssop	<i>Bacopa</i> spp.	BR	2 ft.
Zone 2 – Herbaceous Plantings			
Arrowhead	<i>Sagittaria lancifolia</i>	BR	2 ft.
Blue flag iris	<i>Iris virginicus</i>	BR	2 ft.
Bulrush	<i>Scirpus</i> spp.	BR	2 ft.
Cordgrass	<i>Spartina bakeri</i>	BR	2 ft.
Golden canna	<i>Canna flaccida</i>	BR	2 ft.
Maidencane	<i>Panicum hemitomon</i>	BR	2 ft.
Pickerelweed	<i>Pontederia cordata</i>	BR	2 ft.
Sawgrass	<i>Cladium jamaicense</i>	2 in.	2 ft.
Soft rush	<i>Juncus effusus</i>	BR	2 ft.
Spikerush	<i>Eleocharis</i> spp.	BR	2 ft.
Water hyssop	<i>Bacopa</i> spp.	BR	2 ft.
Zone 3 – Herbaceous Plantings			
Arrowhead	<i>Sagittaria lancifolia</i>	BR	2 ft.
Bulrush	<i>Scirpus</i> spp.	BR	2 ft.
Fireflag	<i>Thalia geniculata</i>	BR	2 ft.
Pickerelweed	<i>Pontederia cordata</i>	BR	2 ft.
Soft rush	<i>Juncus effusus</i>	BR	2 ft.
Spikerush	<i>Eleocharis</i> spp.	BR	2 ft.
Zone 4 – Herbaceous Plantings			
Fireflag	<i>Thalia geniculata</i>	BR	2 ft.
Floating-hearts	<i>Nymphoides aquatica</i>	BR	2 ft.
Spatter-Dock	<i>Nyphar luteum</i>	BR	2 ft.
Waterlily	<i>Nymphaea odorata</i>	BR	2 ft.
<sup>1</sup> Littoral plantings must include a minimum of four different native herbaceous plant species. Additional native species may be included in the planting list prior to DO approval. BR – bare root			
Passarella & Associates, Inc. #17PGI2719 Revised 2/6/19			1 of 1

CODE MINIMUM LANDSCAPE PHASING NARRATIVE:

PHASE 2A  
EX. WILDBLUE LAKE NORTH – 2,115 LF  
LAKE C-1

PHASE 2B  
EX. WILDBLUE LAKE NORTH – 3,879 LF  
LAKE C-2  
LAKE C-3  
LIFT STATION SCREENING

PHASE 2C  
EX. WILDBLUE LAKE NORTH – 2,699 LF

**VEGETATION PERMIT REQUIRED  
PRIOR TO ANY SITE WORK**  
Protective barricades must be constructed and inspected prior to permit issuance. Please contact Division of Environmental Sciences (239) 533-8389.

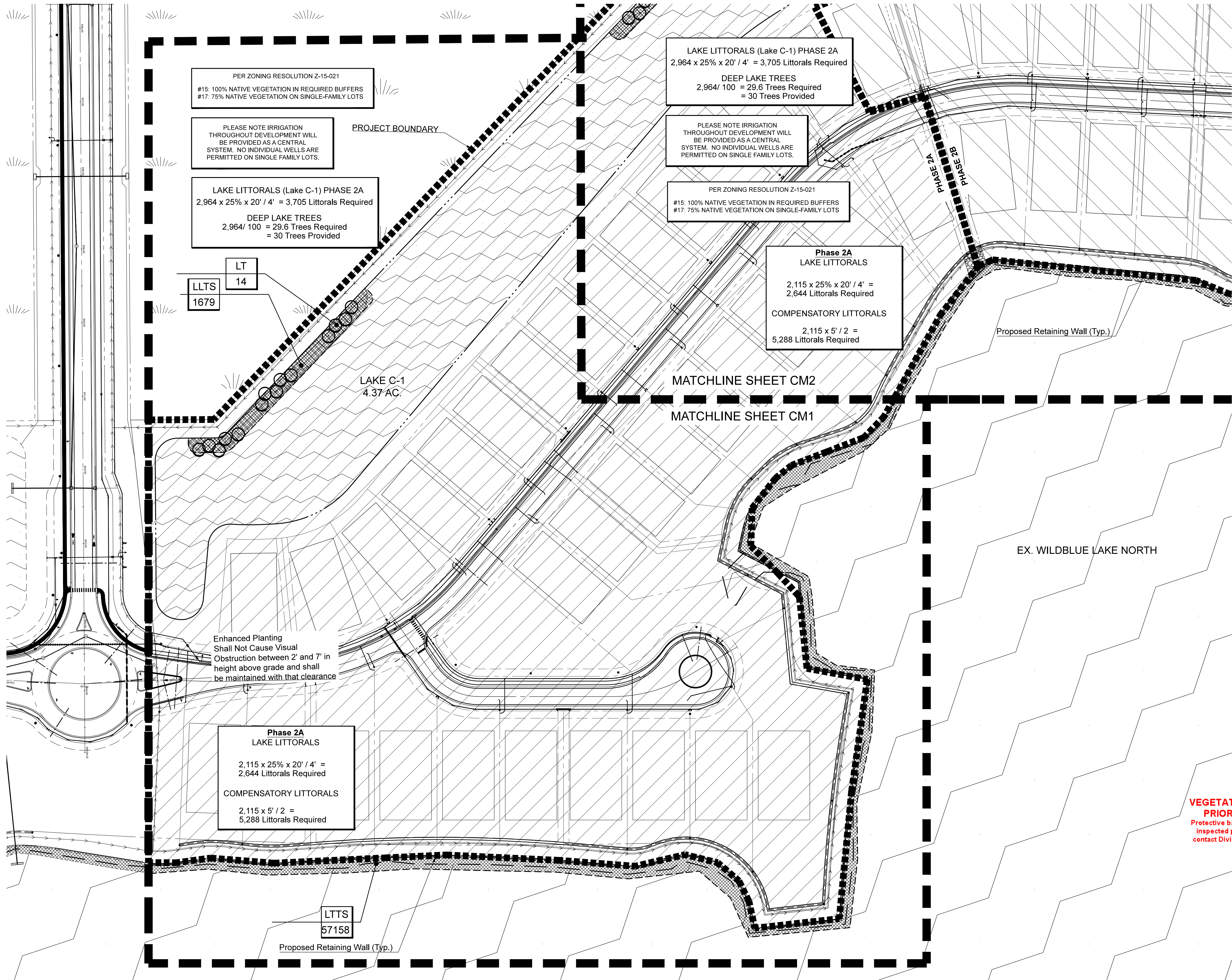
**APPROVED  
DOS2019-00120  
Tom Sawtell, Plan Reviewer  
Lee County Development Services  
5/4/2020**

LITTORAL SUMMARY Existing Wild Blue North Lake by Phases (PHASE 2 RESIDENTIAL)						
	PHASE 2A	PHASE 2B	PHASE 2C	EX. LITTORAL ADJACENT TO CONSERVATION I AND J	TOTALS BY PHASE	SEE DOS2017-00103 FOR LAKE PHASE FOR WB PHASE 1 RESIDENTIAL
Shore line length	2,115 LF	3,879 LF	2,699 LF	6,530 LF	15,223 LF	20,741 LF
Required Littorals (including Compensatory)	7,932	14,547	10,122	24,557	57,158	77,779

Site Area Information	
LAND USE CALCULATIONS:	
DESCRIPTION	AREA (AC)
Ex. Wildblue Lake North @ Control	572.52 acres
Roadway	
Road and Curb	5.57 acres
Sidewalk	0.97 acres
Buildings	26.09 acres
Proposed Lakes @ Control	19.03 acres
Other	
Open space	44.02 acres
TOTAL SITE AREA	95.68 acres

NOTICE:  
ALL DRAWING DISCREPANCIES MUST BE BROUGHT TO THE ATTENTION OF THE LANDSCAPE ARCHITECT AND LA APPROVED SHOP DRAWINGS MUST BE OBTAINED PRIOR TO ORDERING MATERIALS OR BEGINNING CONSTRUCTION.





NOTICE:  
ALL DRAWING DISCREPANCIES MUST BE  
BROUGHT TO THE ATTENTION OF THE LANDSCAPE  
ARCHITECT, AND LA APPROVED SHOP DRAWINGS MUST BE  
OBTAINED PRIOR TO ORDERING MATERIALS OR BEGINNING CONSTRUCTION.

Date: 07/24/19  
Designed By: AMD  
Date: 07/24/19  
Drawn By: AMD

CM1

CODE MINIMUM LANDSCAPE  
PLAN

Scale: 1" = 60'-0"

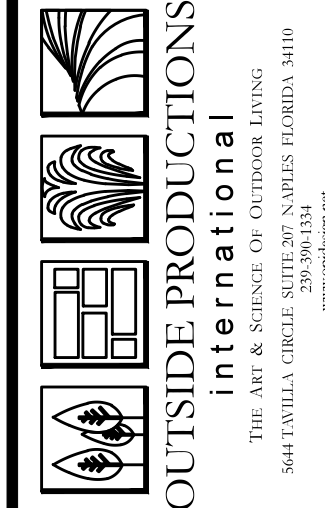


WILDBLUE

PREPARED FOR: LENNAR HOMES  
ESTERO, LEE COUNTY, FLORIDA

Job Number:  
062-19

This site and design are the  
property of Outside Productions,  
Inc. Plans shall not be copied or  
reproduced without the written  
consent of Outside Productions, Inc.



W. Patrick Todd, ASLA  
Landscape Architect #1481

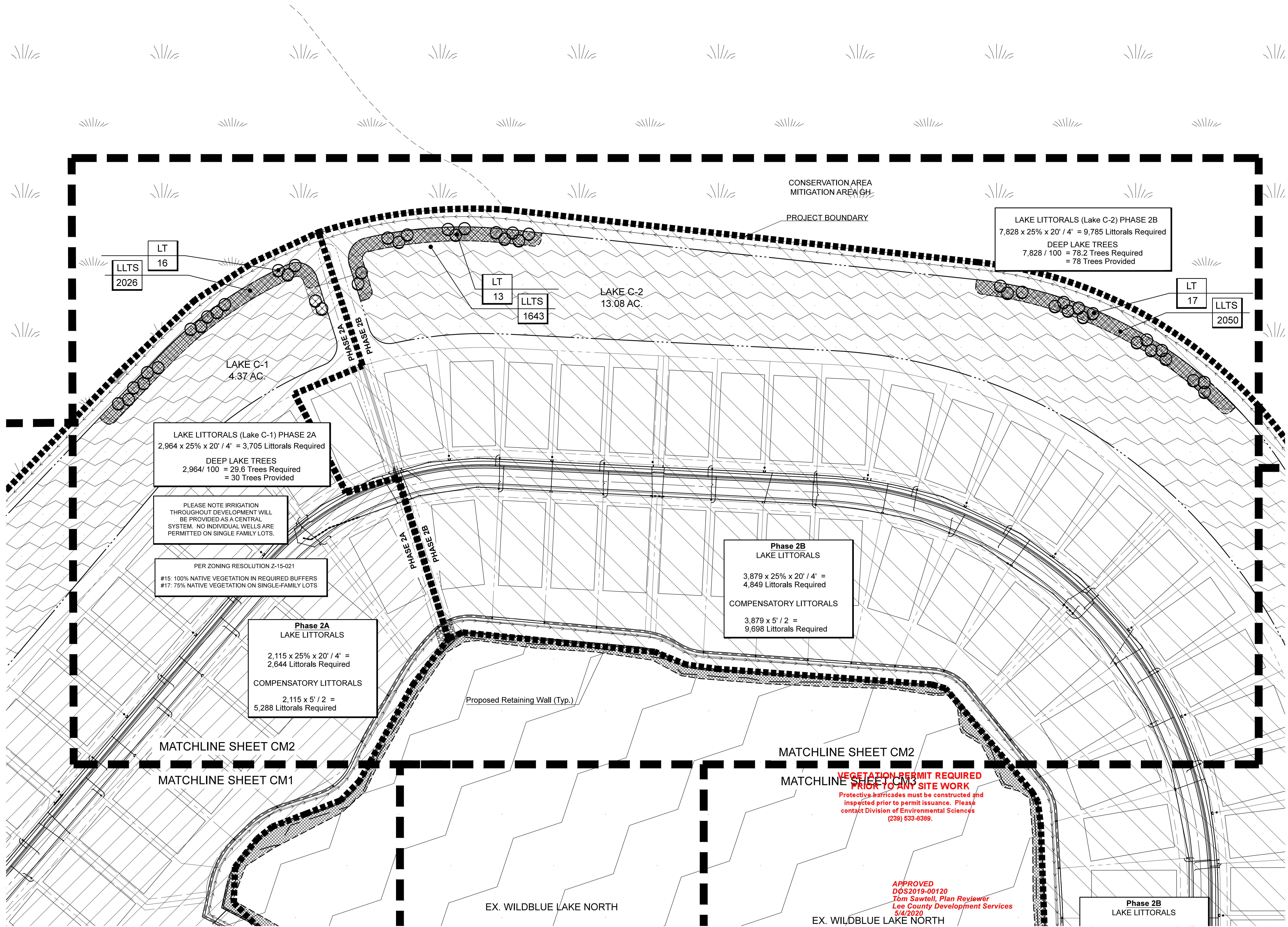
Andrea M. Douglas-Cook, ASLA  
Landscape Architect #620787

APPROVED  
DOS2019-00120  
Tom Sawtell, Plan Reviewer  
Lee County Development Services  
5/4/2020

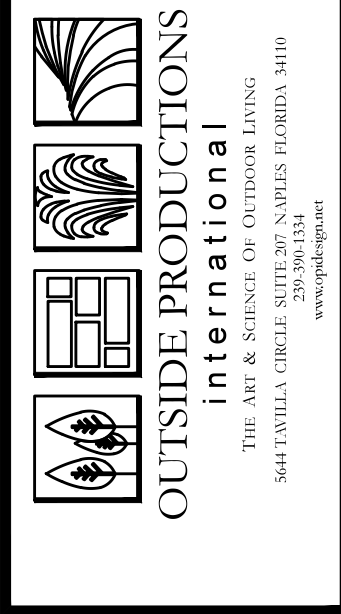
VEGETATION PERMIT REQUIRED  
PRIOR TO ANY SITE WORK  
Protective barricades must be constructed and  
inspected prior to permit issuance. Please  
contact Division of Environmental Sciences  
(239) 633-8389.

10-23-19 REV/1-Per County Comments dated 10-14-19 01-17-20 REV/2-Civil Eng. Base Update



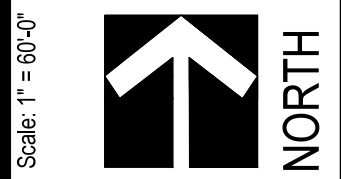


NOTICE:  
ALL DRAWING DISCREPANCIES MUST BE BROUGHT TO THE ATTENTION OF THE LANDSCAPE ARCHITECT, AND LA APPROVED SHOP DRAWINGS MUST BE OBTAINED PRIOR TO ORDERING MATERIALS OR BEGINNING CONSTRUCTION.



Job Number: 082-19  
This site and design are the property of Outside Productions, Inc. Plans shall not be copied or reproduced without the written consent of Outside Productions, Inc.

WILDBLUE  
PREPARED FOR: LENNAR HOMES  
ESTERO, LEE COUNTY, FLORIDA

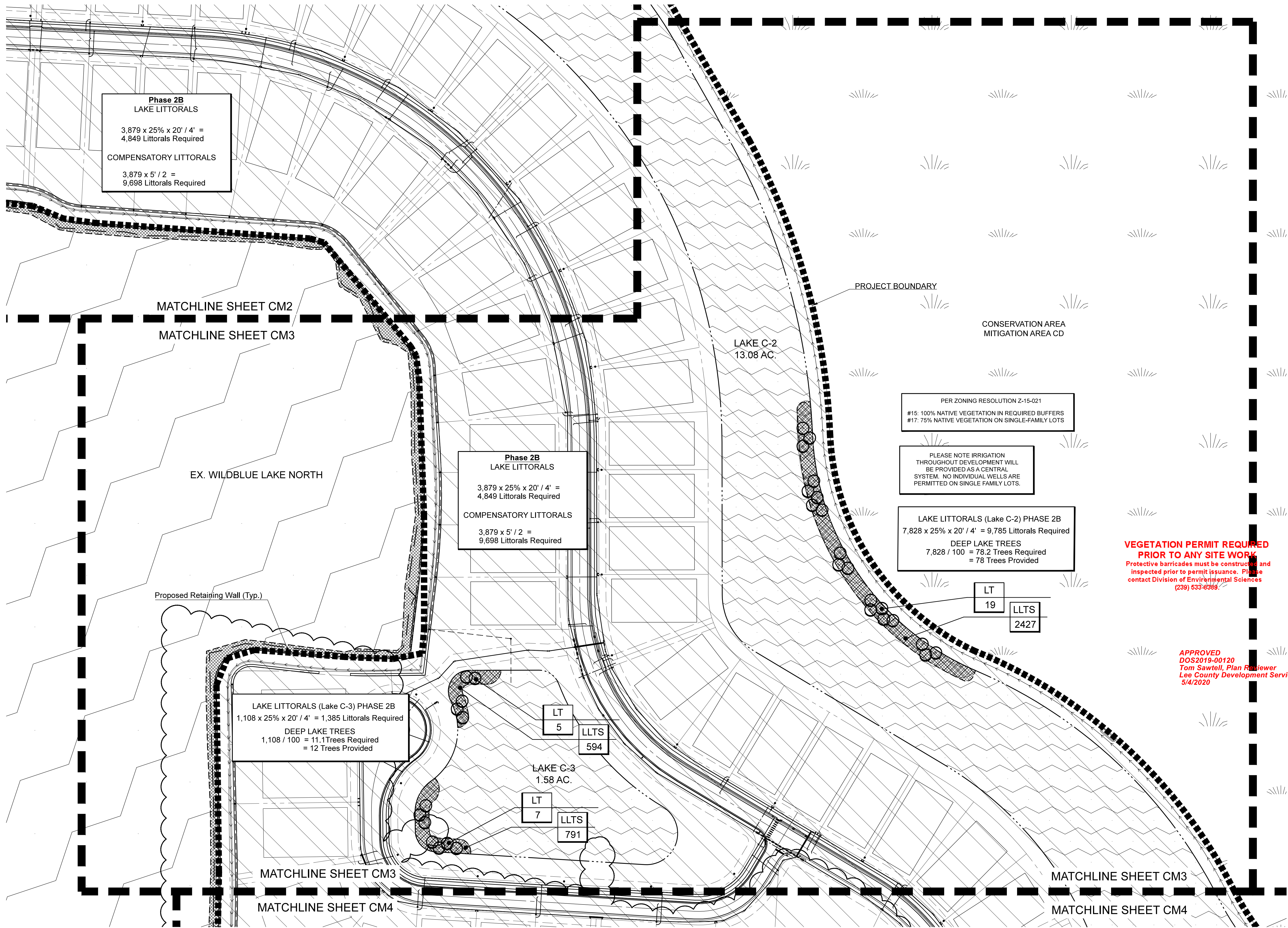


CM2  
CODE MINIMUM LANDSCAPE  
PLAN

Date: 07-24-19  
Designed By: AMD  
Date: 07-24-19  
Drawn By: AMD

10-23-19 REV1-Per County Comments dated 10-14-19 10-17-20 REV2-Civil Eng. Base Update





NOTICE:  
ALL DRAWING DISCREPANCIES MUST BE BROUGHT TO THE ATTENTION OF THE LANDSCAPE ARCHITECT, AND LA APPROVED SHOP DRAWINGS MUST BE OBTAINED PRIOR TO ORDERING MATERIALS OR BEGINNING CONSTRUCTION.

**VEGETATION PERMIT REQUIRED  
PRIOR TO ANY SITE WORK**  
Protective barricades must be constructed and inspected prior to permit issuance. Please contact Division of Environmental Sciences (239) 533-8389.

**APPROVED**  
DOS2019-00120  
Tom Sawtell, Plan Reviewer  
Lee County Development Services  
5/4/2020

CM3

CODE MINIMUM LANDSCAPE  
PLAN

WILDBLUE

PREPARED FOR: LENNAR HOMES  
ESTERO, LEE COUNTY, FLORIDA

Scale: 1" = 60'-0"

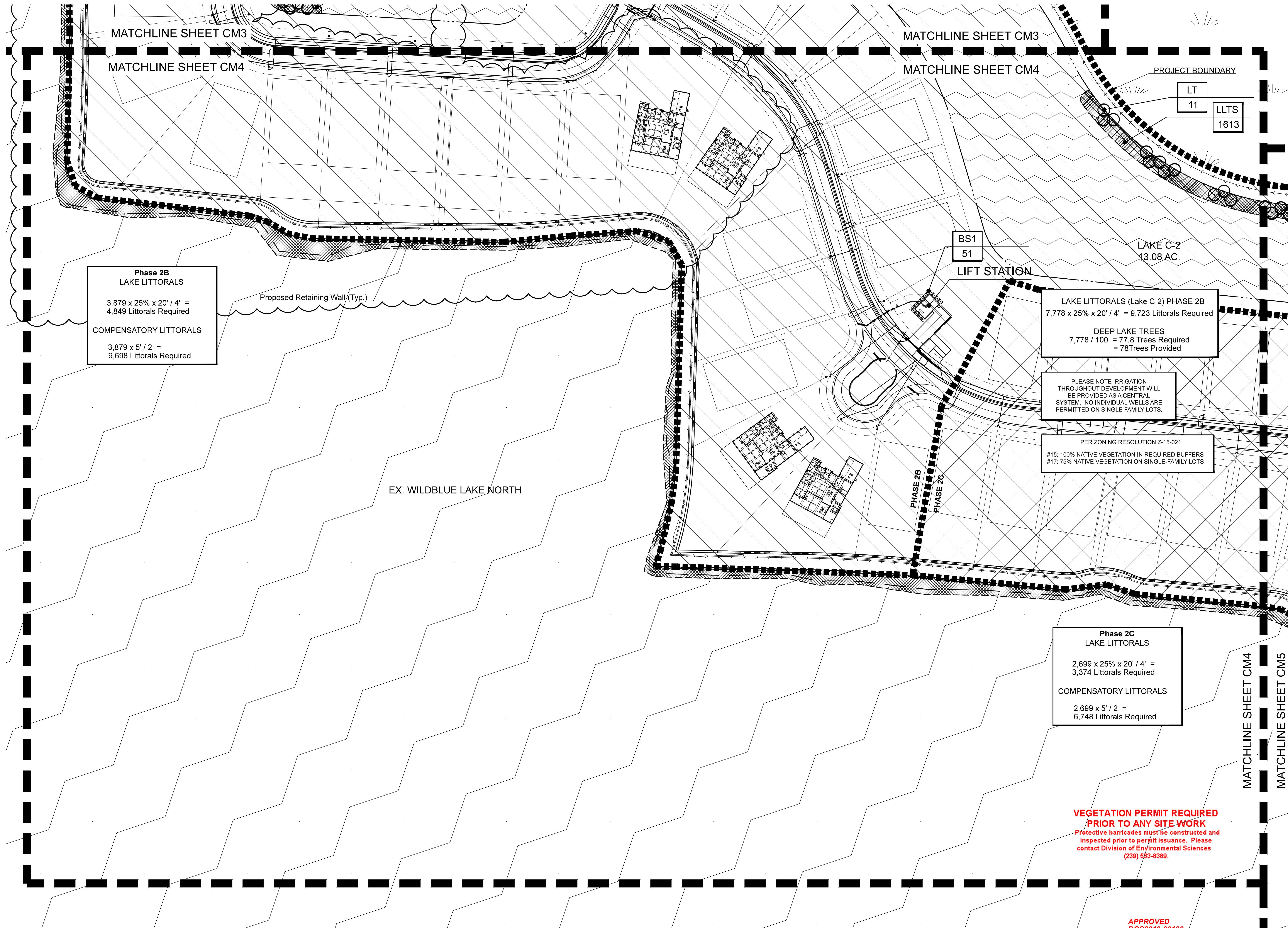
NORTH

Date: 07-24-19  
Designed By: AMD  
Date: 07-24-19  
Drawn By: AMD

OUTSIDE PRODUCTIONS  
International  
THE ART & SCIENCE OF LANDSCAPE DESIGN  
5040 WILLOW CREEK DRIVE, SUITE 100, FORT MYERS, FL 33907  
(239) 939-1334  
www.outsideproductions.com

W. Patrick Todd, ASLA  
Landscape Architect #1481  
Andrea M. Douglas-Cook, ASLA  
Landscape Architect #627057





**VEGETATION PERMIT REQUIRED  
PRIOR TO ANY SITE WORK**  
 Protective barricades must be constructed and  
 inspected prior to permit issuance. Please  
 contact Division of Environmental Sciences  
 (239) 533-8389.

**APPROVED**  
 DOS2019-00120  
 Tom Sawtell, Plan Reviewer  
 Lee County Development Services  
 5/4/2020

**NOTICE:**  
 ALL DRAWING DISCREPANCIES MUST BE  
 BROUGHT TO THE ATTENTION OF THE LANDSCAPE  
 ARCHITECT, AND LA APPROVED SHOP DRAWINGS MUST BE  
 OBTAINED PRIOR TO ORDERING MATERIALS OR BEGINNING CONSTRUCTION.

Date: 07/24/19  
 Date: 07/24/19

Designed By: AMD  
 Drawn By: AMD

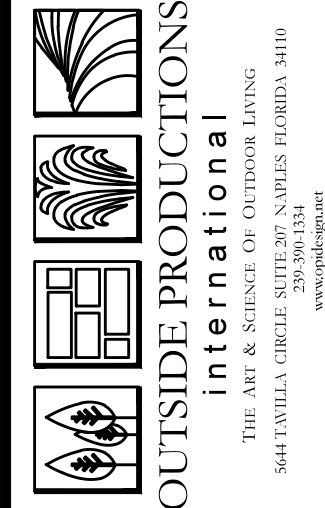
Scale: 1" = 60'-0"

**WILDBLUE**

PREPARED FOR: LENNAR HOMES  
 ESTERO, LEE COUNTY, FLORIDA



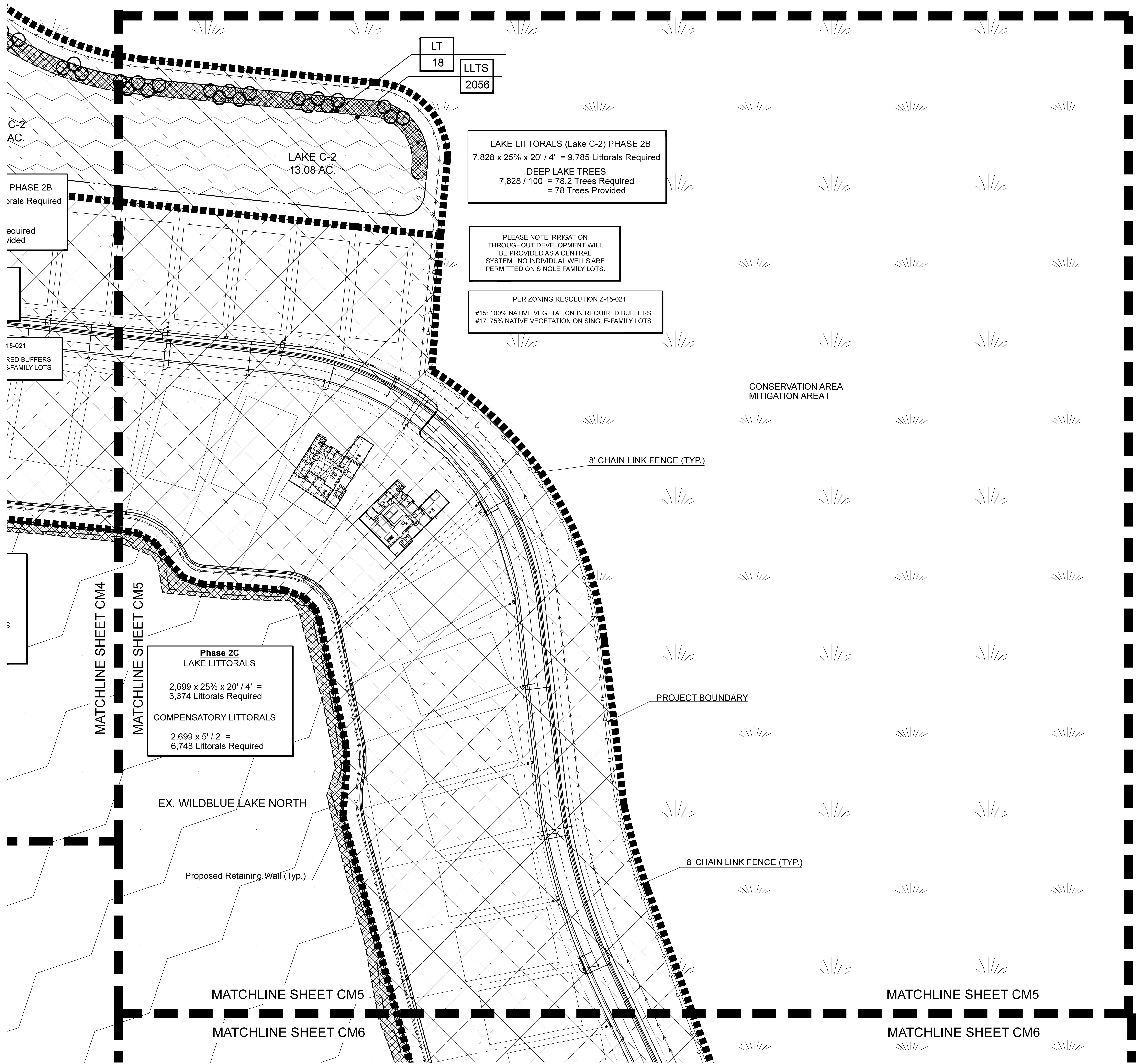
**CM4**  
**CODE MINIMUM LANDSCAPE  
 PLAN**



Job Number:  
 082-19  
 This site and design are the  
 property of Outside Productions,  
 Inc. Plans shall not be copied or  
 reproduced without the written  
 consent of Outside Productions, Inc.

W. Patrick Todd, ASLA  
 Landscape Architect #181  
 Andrea M. Douglas-Cook, ASLA  
 Landscape Architect #62707





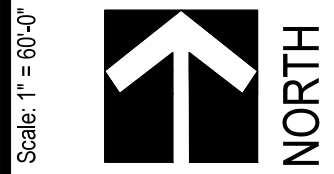
**VEGETATION PERMIT REQUIRED  
PRIOR TO ANY SITE WORK**  
Protective barricades must be constructed and  
inspected prior to permit issuance. Please  
contact Division of Environmental Sciences  
(239) 533-8389.

**APPROVED**  
DOS2019-00120  
Tom Sawtell, Plan Reviewer  
Lee County Development Services  
5/4/2020

**NOTICE:**  
ALL DRAWING DISCREPANCIES MUST BE  
BROUGHT TO THE ATTENTION OF THE LANDSCAPE  
ARCHITECT, AND LA APPROVED SHOP DRAWINGS MUST BE  
OBTAINED PRIOR TO ORDERING MATERIALS OR BEGINNING CONSTRUCTION.

Date: 07-24-19  
Designed By: AMD  
Date: 07-24-19  
Drawn By: AMD

**CM5**

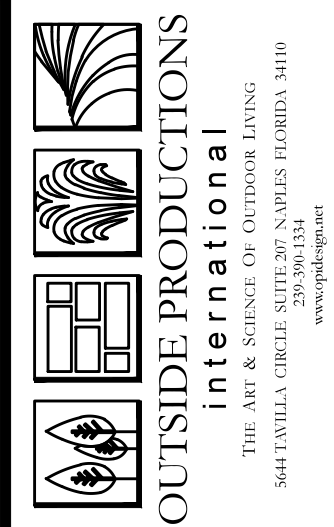


**WILDBLUE**

**CODE MINIMUM LANDSCAPE  
PLAN**

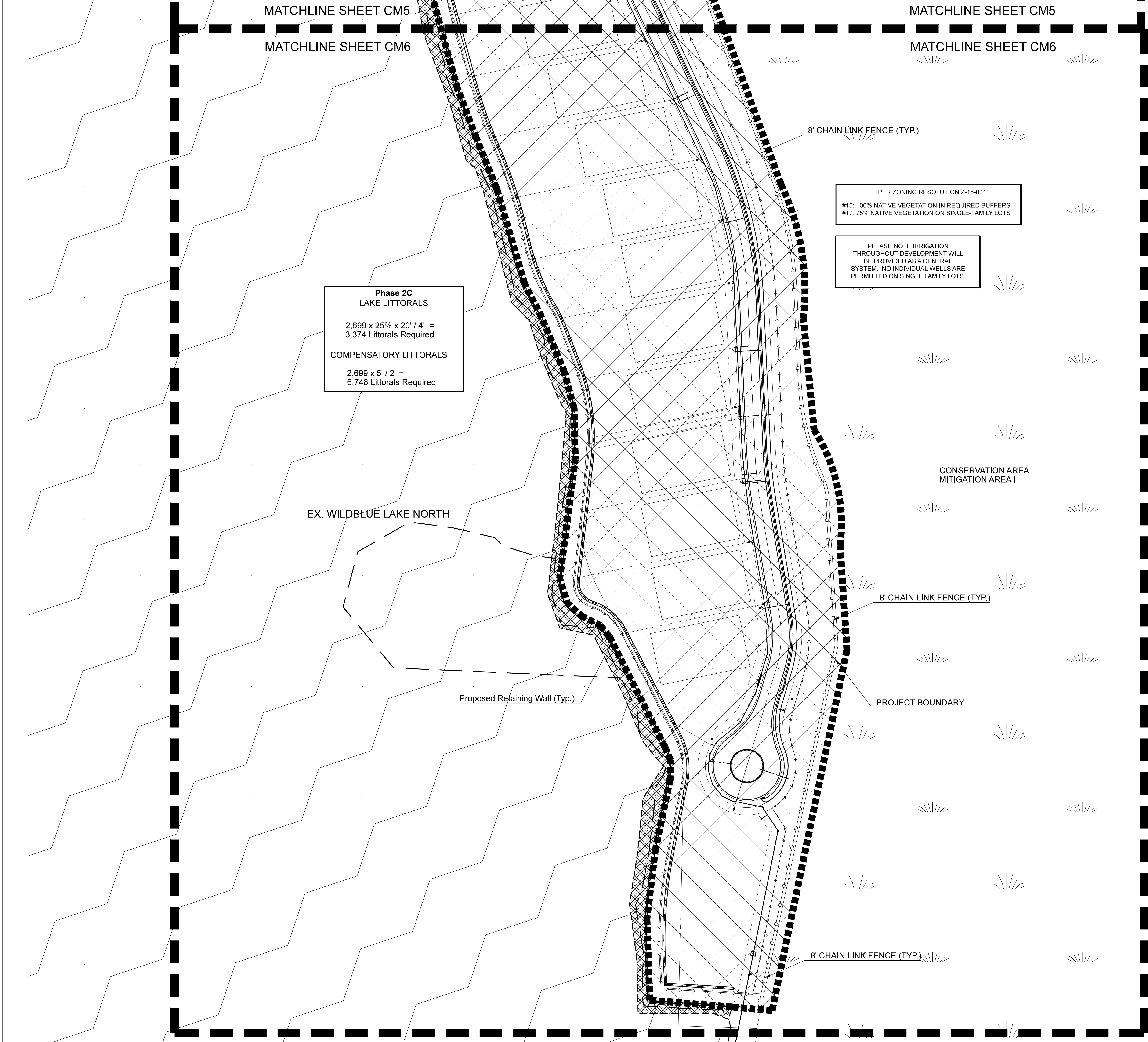
PREPARED FOR: LENNAR HOMES  
ESTERO, LEE COUNTY, FLORIDA

Job Number:  
062-19  
This site and design are the  
property of Outside Productions,  
Inc. Plans shall not be copied or  
reproduced without the written  
consent of Outside Productions, Inc.



W. Patrick Todd, ASLA  
Landscape Architect #1481  
Andrea M. Douglas-Cook, ASLA  
Landscape Architect #620787





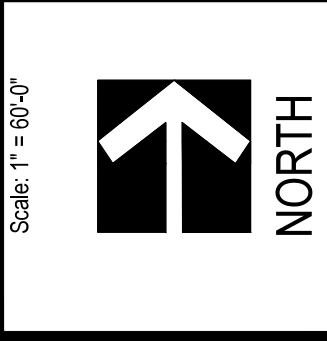
**VEGETATION PERMIT REQUIRED  
PRIOR TO ANY SITE WORK**  
Protective barricades must be constructed and  
inspected prior to permit issuance. Please  
contact Division of Environmental Sciences  
(239) 533-8389.

**APPROVED**  
DOS2019-00120  
Tom Sawtell, Plan Reviewer  
Lee County Development Services  
5/4/2020

10-23-19 REV/1-Per County Comments dated 10-14-19 01-17-20 REV/2-Civil Eng. Base Update

Date: 07-24-19	Designed By: AMD
Date: 07-24-19	Drawn By: AMD

**CM6**

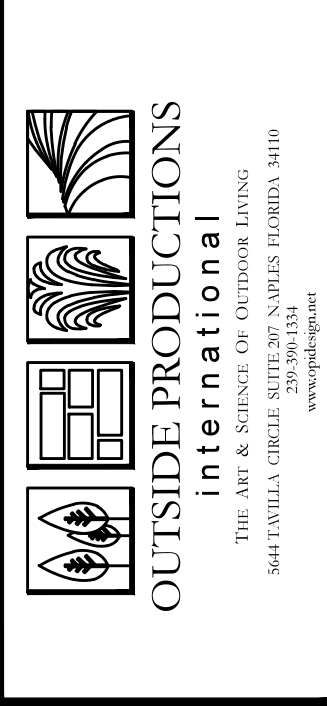


**WILDBLUE**

PREPARED FOR: LENNAR HOMES  
ESTERO, LEE COUNTY, FLORIDA

Job Number:  
062-19

This site and design are the  
property of Outside Productions,  
Inc. Plans shall not be copied or  
reproduced without the written  
consent of  
Outside Productions, Inc.



W. Patrick Todd, ASLA  
Landscape Architect #1481

Andrea M. Douglas-Cook, ASLA  
Landscape Architect #620767

**NOTICE:**  
ALL DRAWING DISCREPANCIES MUST BE  
BROUGHT TO THE ATTENTION OF THE LANDSCAPE  
ARCHITECT, AND LA APPROVED SHOP DRAWINGS MUST BE  
OBTAINED PRIOR TO ORDERING MATERIALS OR BEGINNING CONSTRUCTION.



