

MINOR CHANGE #1 PLANS
FOR

WILDBLUE
PHASE 2 RESIDENTIAL

PART OF SECTIONS 8, TOWNSHIP 46 SOUTH, RANGE 26 EAST
FORT MYERS, LEE COUNTY, FLORIDA

PROJECT DATA

SITE ADDRESS	PROJECT DATUM	
13500 ALICO ROAD FT. MYERS, FLORIDA 33913	STATE PLANE FLORIDA WEST ZONE NAD 1983 (NSRS2007) NORTH AMERICAN VERTICAL DATUM (NAVD) 1988	
ZONING	RECORD PLAT	
MPD (RESOLUTION Z-15-021)	PLT2017-00019 INSTRUMENT NO.: 2017000216031	
FLOOD ZONE	STRAP NUMBERS	
ACCORDING TO FIRM 12071C0625 EFFECTIVE DATE AUGUST 28, 2008, THE SUBJECT PARCEL IS NOT LOCATED WITHIN A SPECIAL FLOOD HAZARD AREA (PANEL NOT PRINTED)	08-46-26-L3-090F1.0000 08-46-26-L1-090F1.0010 08-46-26-L2-090F1.0020 08-46-26-L2-090F1.0030	
PERMIT REQUIREMENTS		
AGENCY	STATUS	NOTES
S. FLORIDA WATER MANAGEMENT DISTRICT	APPROVED	36-102206-P
LEE COUNTY DEVELOPMENT ORDER	APPROVED	DOS2019-00120
FLORIDA DEPARTMENT OF HEALTH	APPROVED	0217283-234DSGP
FLORIDA DEPT. OF ENVIRONMENTAL PROTECTION	APPROVED	38436-447-DWC/CM
F.D.O.T. CONNECTION PERMIT	N/A	-
F.D.O.T. DRAINAGE CONNECTION PERMIT	N/A	-
F.D.O.T. UTILITY PERMIT	N/A	-
ARMY CORPS OF ENGINEERS	APPROVED	SAJ-2003-10995
F.D.E.P. NOTICE OF INTENT	PENDING	FLR20CE79

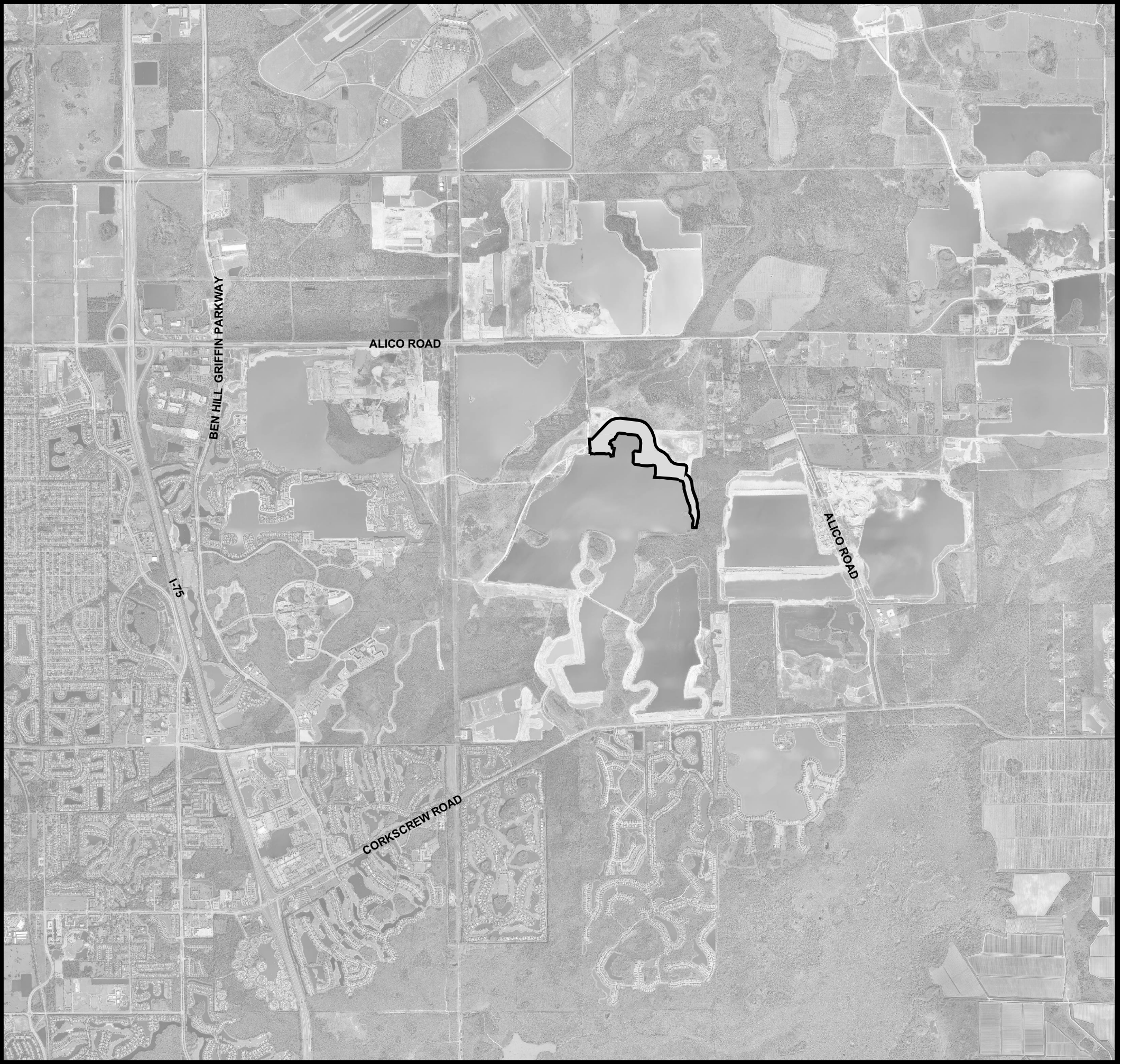
NOTE: CONTRACTOR MUST OBTAIN AND KEEP ON FILE A COPY OF ALL PERMITS
REQUIRED PRIOR TO COMMENCEMENT OF ANY CONSTRUCTION ACTIVITY

DESIGN TEAM

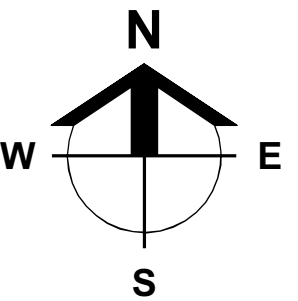
PROJECT ENGINEER	PROJECT MANAGEMENT
TIMOTHY B. GAVIN, P.E.	CHRIS VAN BUSKIRK
DESIGN ENGINEER	PROJECT SURVEYOR
TIMOTHY B. GAVIN, P.E.	SCOTT A. WHEELER, PSM
LEAD DESIGN TECHNICIAN	SITE PLANNING
GUY W. SAPEN	JENNIFER SAPEN, AICP
DESIGN STAFF	LAND PLANNING
SCOTT A. WHEELER, JR.	JENNIFER SAPEN, AICP
QUALITY CONTROL	RECORD DRAWINGS
CHRIS VAN BUSKIRK	-

THESE PLANS MAY HAVE BEEN MODIFIED IN SIZE BY REPRODUCTION.
THIS MUST BE CONSIDERED WHEN OBTAINING SCALED DATA.

ALL DIMENSIONS ARE IN FEET.



PROJECT
LOCATION



LOCATION MAP



INDEX OF DRAWINGS

ENGINEER OF RECORDS' SIGNATURE AND SEAL APPLY TO THE FOLLOWING PLAN SHEETS, EXCLUDING ANY SUPPLEMENTS:

SHEET	DESCRIPTION	XREF	DRAWING NAME
1.0	COVER SHEET AND LOCATION MAP	B	23795A01.DWG
2.0	STANDARD NOTES, LEGEND, AND ABBREVIATIONS	A	23795A02.DWG
3.0	AERIAL PHOTOGRAPH AND EXISTING CONDITIONS PLAN	B,D	23795A06.DWG
4.0	MASTER SITE AND PHASING PLAN	A	23795A10.DWG
5.0	MASTER DRAINAGE PLAN	A	23795A11.DWG
6.0	MASTER UTILITY PLAN	A	23795A12.DWG
7.0-7.17	DETAILED PAVING, GRADING, AND DRAINAGE PLANS	A	23795A15.DWG
8.0-8.2	TYPICAL SECTIONS	-	23795A18.DWG
9.0	PLAN AND PROFILE KEY SHEET	A	23795A29.DWG
10.0-10.9	PLAN AND PROFILES - BLUE SAPPHIRE DR. (STA. 100)	A,C	23795A30A.DWG
11.0	PLAN AND PROFILES - LAPIS CT. (STA. 200)	A,C	23795A30B.DWG
12.0-12.4	PLAN AND PROFILES - CERULEAN CT. (STA. 300)	A,C	23795A30C.DWG
13.0	PLAN AND PROFILES - LIFT STATION - 7897 (STA. 400)	A,C	23795A30D.DWG
14.0	PLAN AND PROFILES - WATERMAIN LOOP (STA. 600)	A,C	23795A30E.DWG
15.0-15.1	PLAN AND PROFILES - WATERMAIN DIRECTIONAL BORE (STA. 600)	A,C	23795A30F.DWG
16.0	CONTROL STRUCTURE DETAILS	-	23795A42.DWG
17.0-17.2	TYPICAL CONSTRUCTION DETAILS	-	23795A44.DWG
18.0	EROSION CONTROL DETAILS	-	23795A50.DWG
19.0	STORMWATER POLLUTION PREVENTION PLAN	A	23795A52.DWG
20.0-20.3	UTILITY DETAILS	-	23795A70.DWG
21.0	LIFT STATION 7897 DETAILS	-	23795A71.DWG
22.0	DEWATERING PLANS	A	23795A93.DWG
23.0	DEEP LAKE MANAGEMENT PLANS	A	23795A94.DWG
24.0-24.4	STREET LIGHTING PLANS	A	23795A96.DWG

****FINAL INSPECTION REQUIRED****

At the completion of the improvements, please
submit a Letter of Substantial Compliance to
schedule a Final Inspection.

SUPPLEMENTS:

SHEET	DESCRIPTION
LCU 25.0-25.9	STANDARD 240V 3PH PUMP STATION (PREPARED BY LEE COUNTY UTILITIES)

CROSS-REFERENCED DRAWINGS:

XREF	DESCRIPTION	DRAWING NAME
A	BASE LINEWORK PLAN	23795A00.DWG
B	AERIAL PHOTOGRAPH	23795A06.DWG
C	PROFILE BASE PLAN	23795A00.DWG
D	SURVEY	23372S00.DWG

Minor Change #1

APPROVED
DOS2019-00120
Tom Sawtell, Plan Reviewer
Lee County Development Services
7/16/2020

PLAN STATUS

MINOR CHANGE #1
05-21-2020

Barraco
and Associates, Inc.
CIVIL ENGINEERING - LAND SURVEYING
LAND PLANNING
www.barraco.net
2271 MCGREGOR BLVD., SUITE 100
POST OFFICE DRAWER 2800
FORT MYERS, FLORIDA 33902-2800
PHONE (239) 461-3170
FAX (239) 461-3169
FLORIDA CERTIFICATES OF AUTHORIZATION
ENGINEERING 7995 - SURVEYING LB-6940

PREPARED FOR

LENNAR

LENNAR HOMES
10471 BEN C PRATT / 6 MILE
CYPRESS PARKWAY
FORT MYERS, FLORIDA 33966

PHONE (239) 278-1177
FAX (239) 931-4749

PROJECT DESCRIPTION

WildBlue

LEE COUNTY, FLORIDA

ENGINEER OF RECORD
TIMOTHY B. GAVIN, P.E., FOR THE FIRM
FLORIDA P.E. NO. 70675 - TIMG@BARRACO.NET
**Timothy B
Gavin**
2020.06.17
16:39:38
-04'00'
This item has been electronically signed and sealed by
Timothy B. Gavin on the date adjacent to the seal using a SIA
authentication code.
Printed copies of this document are not considered signed
and sealed and the SIA authentication code must be verified
on any electronic copies.
DRAWING NOT VALID WITHOUT SEAL, SIGNATURE AND DATE
(C) COPYRIGHT 2020, BARRACO AND ASSOCIATES, INC.
REPRODUCTION, CHANGES OR ASSIGNMENTS ARE PROHIBITED

FILE NAME J:\23795A01.DWG
LOCATION J:\23795\DWG\DO
PLOT DATE THU 5-21-2020 - 3:29 PM
PLOT BY SCOTT WHEELER JR

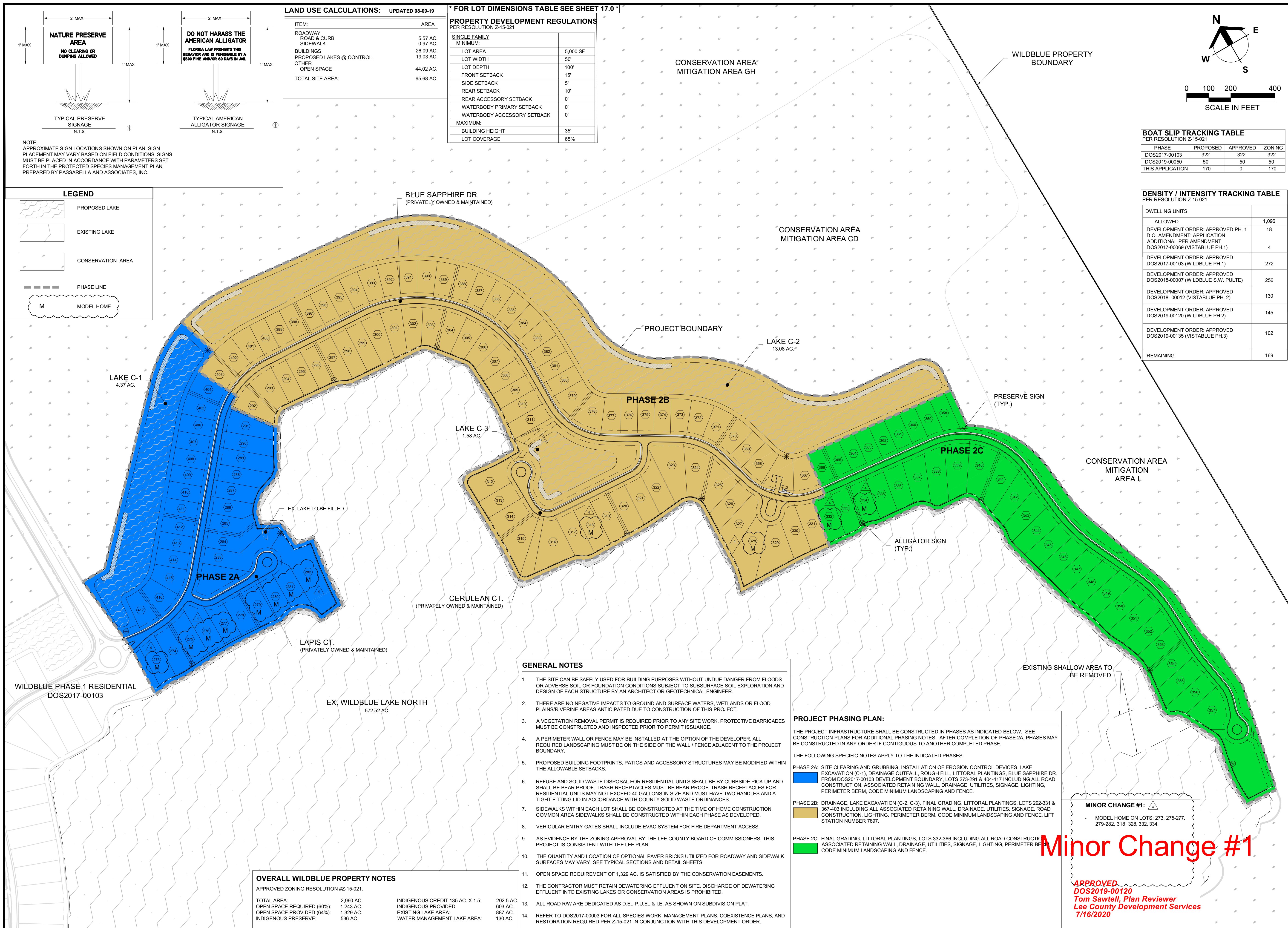
CROSS REFERENCED DRAWINGS

PLAN REVISIONS
09-16-19 L.C.U. COMMENTS DATED 09-10-19
10-14-19 DO COMMENTS DATED 10-14-19
03-03-20 L.C.U. COMMENTS DATED 02-28-20
05-21-20 MINOR CHANGE #1

PLAN STATUS
MINOR CHANGE #1
05-21-2020

COVER SHEET
AND
LOCATION MAP

PROJECT / FILE NO. 23795
SHEET NUMBER 1.0



Barraco

and Associates, Inc.

CIVIL ENGINEERING - LAND SURVEYING
LAND PLANNING

www.barraco.net

2271 MCGREGOR BLVD., SUITE 100
POST OFFICE DRAWER 2800
FORT MYERS, FLORIDA 33902-2800
PHONE (239) 461-3170
FAX (239) 461-3169

FLORIDA CERTIFICATES OF AUTHORIZATION
ENGINEERING 7995 - SURVEYING LB-6940

PREPARED FOR

LENNAR

LENNAR HOMES
10471 BEN C PRATT / 6 MILE
CYPRESS PARKWAY
FORT MYERS, FLORIDA 33966

PHONE (239) 278-1177
FAX (239) 931-4749

PROJECT DESCRIPTION

WildBlue

LEE COUNTY, FLORIDA

ENGINEER OF RECORD
TIMOTHY B. GAVIN, P.E., FOR THE FIRM
FLORIDA P.E. NO. 70675 - TIMG@BARRACO.NET

DRAWING NOT VALID WITHOUT SEAL, SIGNATURE AND DATE
© COPYRIGHT 2020, BARRACO AND ASSOCIATES, INC.
REPRODUCTION, CHANGES OR ASSIGNMENTS ARE PROHIBITED

FILE NAME J:\23795A\DWG

LOCATION J:\23795\DWG\DO

PLOT DATE THU. 5-21-2020 - 3:34 PM

PLOT BY SCOTT WHEELER JR

CROSS REFERENCED DRAWINGS

PLAN REVISIONS

DATE	DESCRIPTION	BY
05-21-20	MINOR CHANGE #1	

PLAN STATUS

MINOR CHANGE #1
05-21-2020

MASTER SITE
AND PHASING
PLAN

PROJECT / FILE NO.	SHEET NUMBER
23795	4.0